

Medical Office Space for Lease

1510 SOUTH CENTRAL AVENUE

GLENDALE, CALIFORNIA



MEMORIAL
PHARMACY

CENTRAL
MEDICAL
PLAZA

KIDDER.COM

km Kidder
Mathews

NEW OWNERSHIP



AVAILABILITIES

Suite	RSF	Description
540	1,515	4 exam rooms, 1 office, restroom, reception, and storage. Available July 1, 2026.
620	974	2 exam rooms, 1 office, reception, and storage. Available July 1, 2026.
650	1,548	3 exam rooms, 1 office, restroom, open work area, and storage.

PROPERTY HIGHLIGHTS

On campus location at Glendale Memorial Hospital

Building entry and common area renovations recently completed

Convenient access to the 5, 2 and 134 freeways

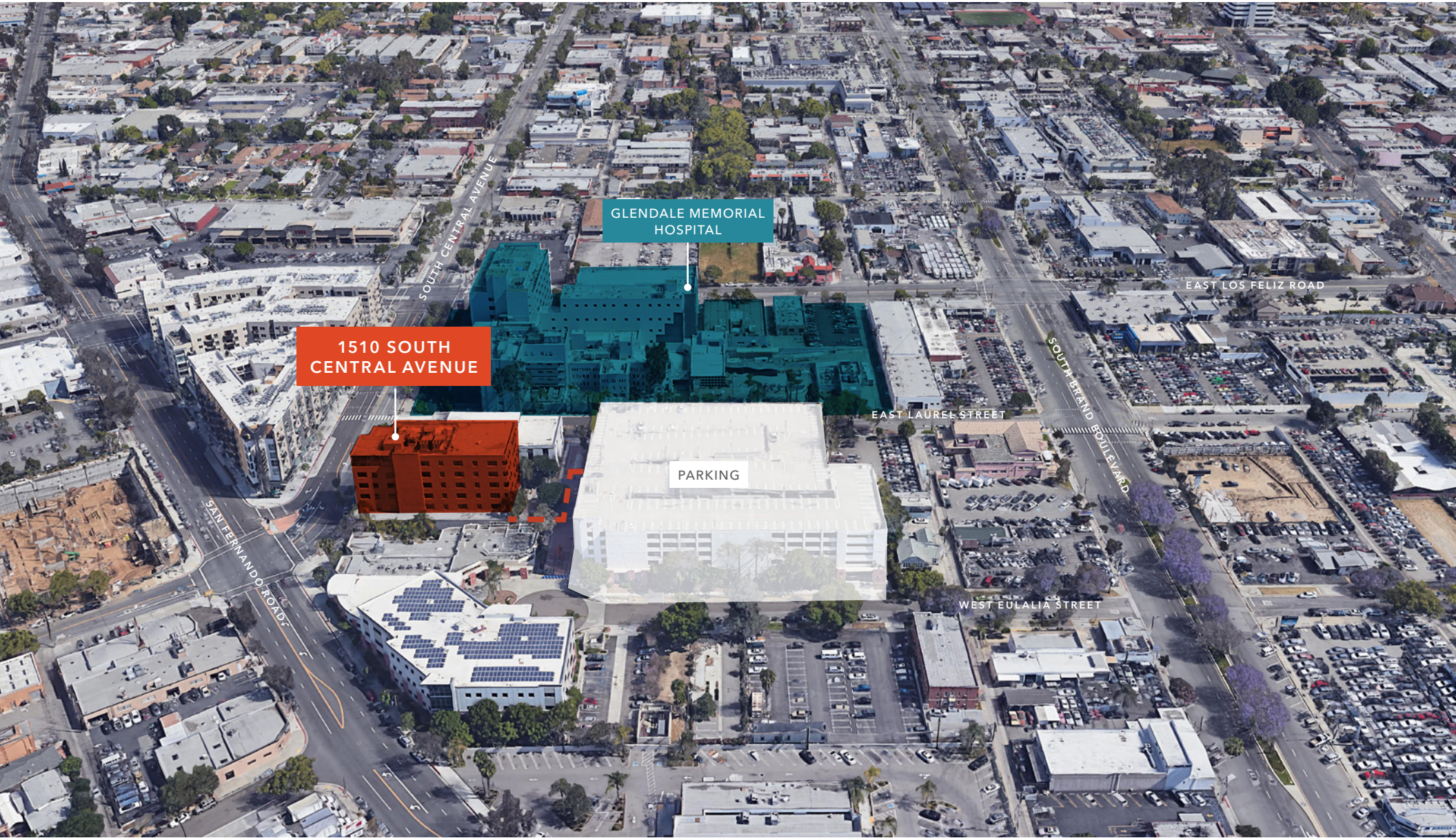
Labcorp and pharmacy onsite

Onsite management with 24/7 building access

Parking ratio of 5 per 1,000 RSF leased, currently at \$20.00 per unreserved stall per month

\$4.10 FSG
LEASE RATE (SF/MONTH)

1510 SOUTH CENTRAL AVENUE



1510 SOUTH CENTRAL AVENUE

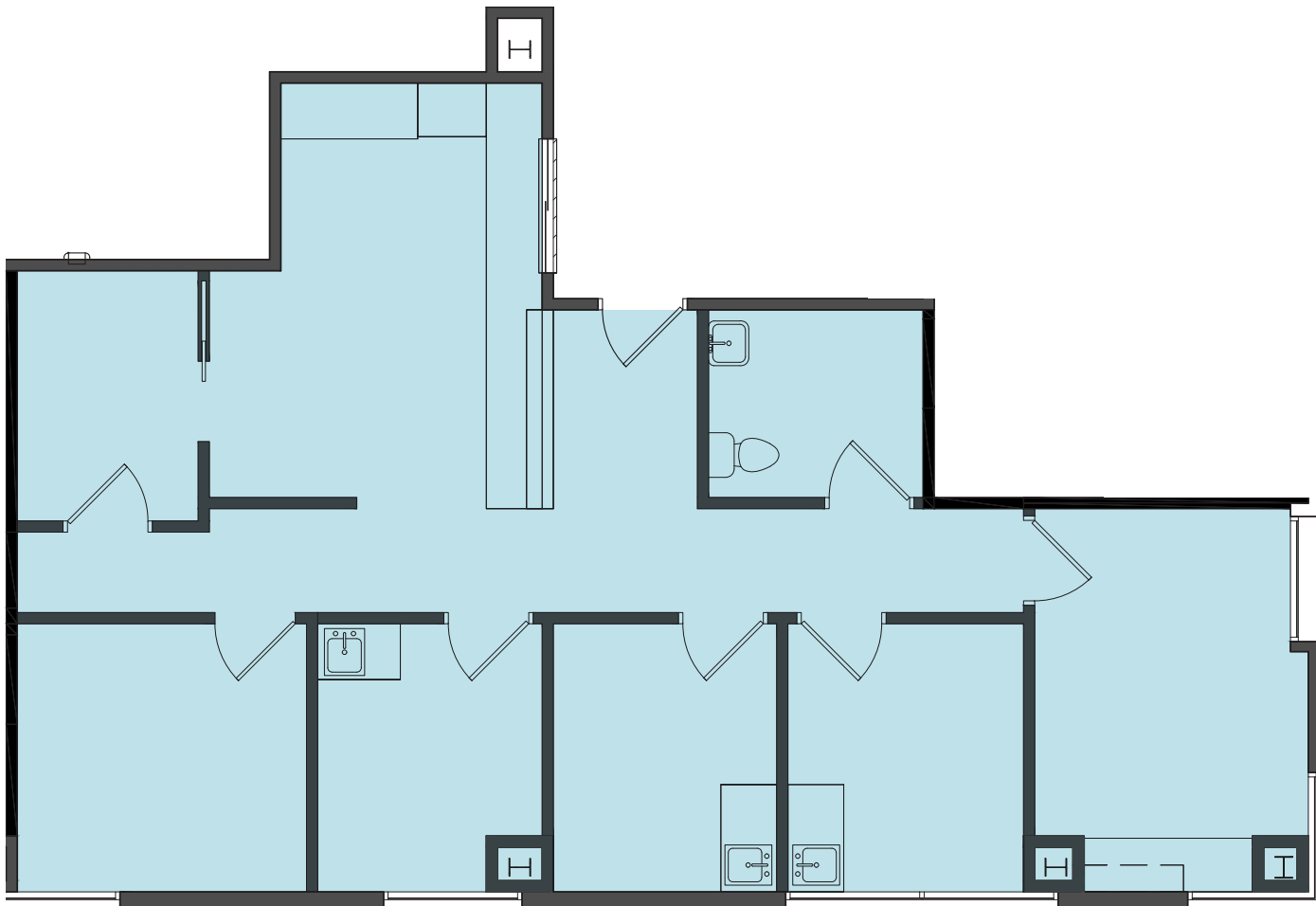


AVAILABLE FOR LEASE

KIDDER MATHEWS

1510 SOUTH CENTRAL AVENUE

SUITE 540



1,515 SF

AVAILABLE

\$4.10 FSG

LEASE RATE (SF/MONTH)

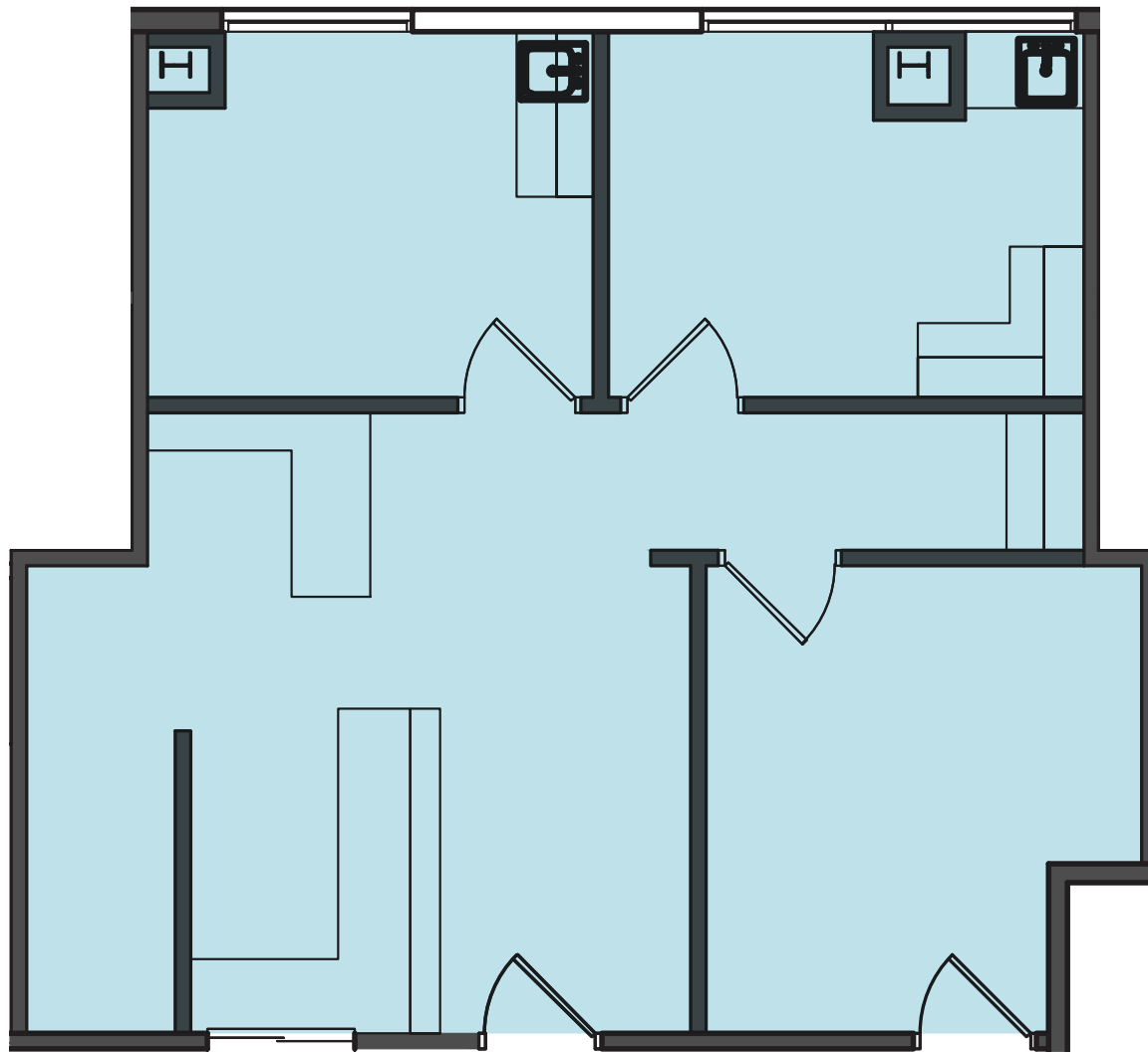
JULY 1, 2026

DATE AVAILABLE

4 exam rooms, 1 office,
restroom, reception,
and storage



SUITE 620



974 SF

AVAILABLE

\$4.10 FSG

LEASE RATE (SF/MONTH)

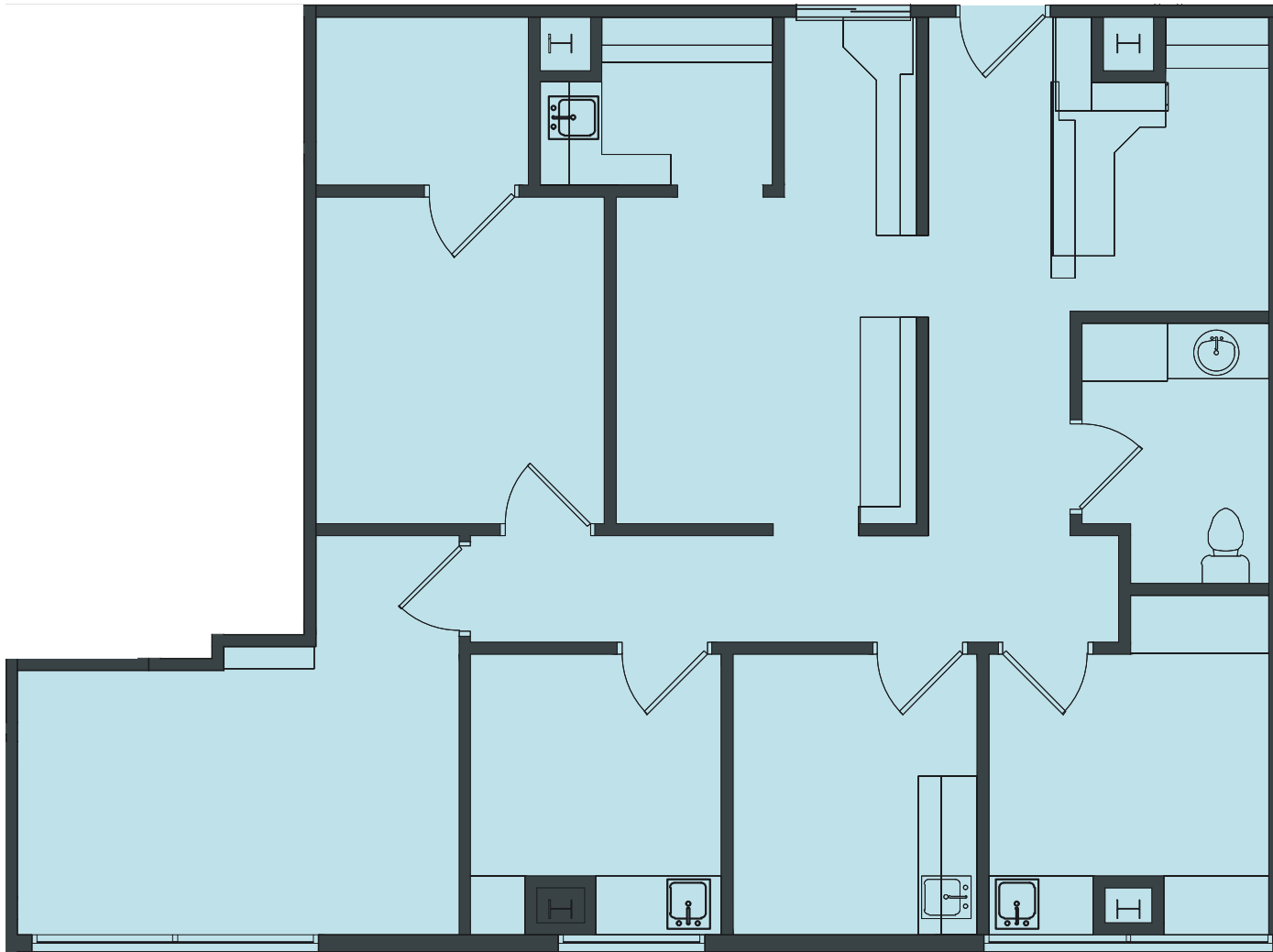
JULY 1, 2026

DATE AVAILABLE

2 exam rooms, 1 office,
reception and storage



SUITE 650



1,548 SF

AVAILABLE

\$4.10 FSG

LEASE RATE (SF/MONTH)

NOW

AVAILABLE

3 exam rooms, 1 office,
restroom, open work area,
and storage



1510 SOUTH CENTRAL AVE

For more information, please contact

BILL BOYD
626.873.1801
bill.boyd@kidder.com
LIC N° 00816177

LINDA LEE
626.873.1802
linda.lee@kidder.com
LIC N° 01278768

SCOTT UNGER
626.873.1803
scott.unger@kidder.com
LIC N° 01855517

KIDDER.COM

This information supplied herein is from sources we deem reliable. It is provided without any representation, warranty, or guarantee, expressed or implied as to its accuracy. Prospective Buyer or Tenant should conduct an independent investigation and verification of all matters deemed to be material, including, but not limited to, statements of income and expenses. Consult your attorney, accountant, or other professional advisor.

