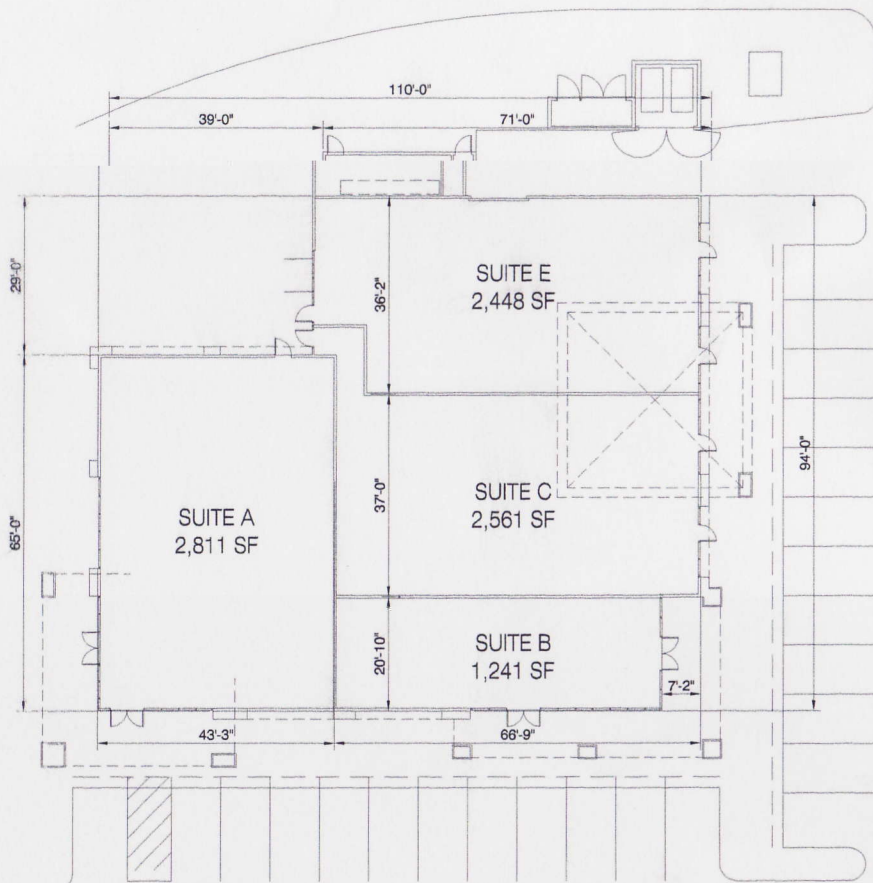


2:\2002 Projects\02124 Page Plaza - Hemet\08 Drawings\08-1 Design\Design Archives\02124 Bldg 9 050802.dwg, 30x42, 8/2/2005 4:24:33 PM, Adobe PDF, 11 x 17, 112,790



MATERIALS & FINISHES	
1. FOAM CORNICE WITH SMOOTH COAT STUCCO PLASTER FINISH, COLOR TO MATCH FRAZEE 8719W KNOCKING WOOD	8. STUCCO PLASTER FINISH, COLOR TO MATCH FRAZEE 8624M STEEPLE GRAY
2. STUCCO PLASTER FINISH, COLOR TO MATCH FRAZEE 8680D BURN'T COPPER	9. ALUMINUM SIDING/ROOF COLOR TO MATCH FRAZEE 8505D TULACODAY
3. STONE VENEER ELDOBRADO STONE, MOUNTAIN LEDGE "BUCKHORN"	10. STUCCO PLASTER FINISH, COLOR TO MATCH FRAZEE 8724M SEAGULL LARK
4. EAGLE ROOFING AMERICAN HERITAGE PCANONKE BLEND, SHEET15	11. STUCCO PLASTER FINISH, COLOR TO MATCH FRAZEE 8722W "CESSY CASTLE"
5. STUCCO PLASTER FINISH, COLOR TO MATCH FRAZEE 8722W PONDICE TINT	12. SIGNAGE
6. DECORATIVE LIGHT FIXTURE	13. OVERHEAD METAL SERVICE DOOR, COLOR TO MATCH ITEM 10
7. METAL TRELLIS, COLOR TO MATCH FRAZEE 8505D BLUECOAT	

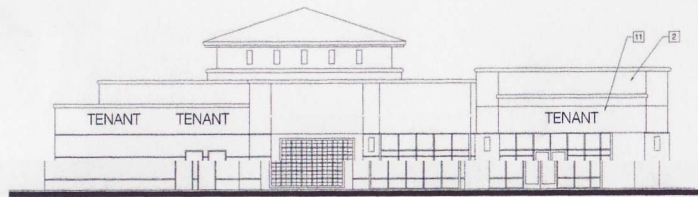


SCALE: 1/8" = 1'

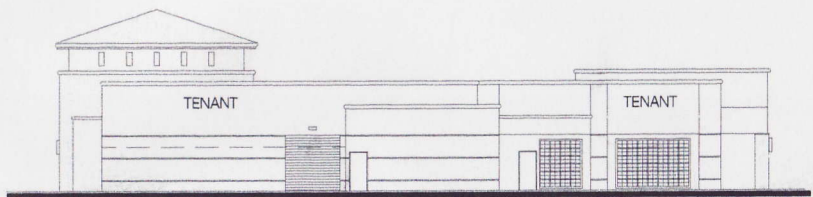
**BUILDING 9**

P/CA PROJECT NUMBER: 02.124.40  
DATE: 02 AUGUST 2005

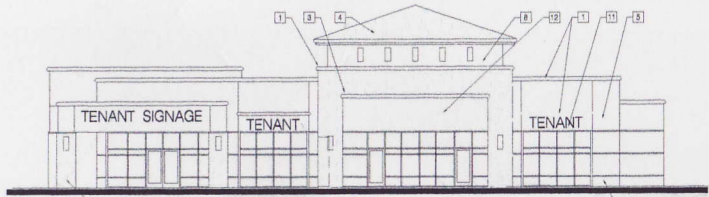
© 2005 PIERCE, FENNER & SMITH LLP. ALL RIGHTS RESERVED. THIS DOCUMENT IS THE PROPERTY OF PIERCE, FENNER & SMITH LLP. IT IS TO BE USED ONLY FOR THE PROJECT AND SITE SPECIFICALLY IDENTIFIED HEREIN. IT IS NOT TO BE REPRODUCED OR TRANSMITTED IN ANY FORM OR BY ANY MEANS, ELECTRONIC OR MECHANICAL, INCLUDING PHOTOCOPYING, RECORDING, OR BY ANY INFORMATION STORAGE AND RETRIEVAL SYSTEM, WITHOUT THE WRITTEN PERMISSION OF PIERCE, FENNER & SMITH LLP.



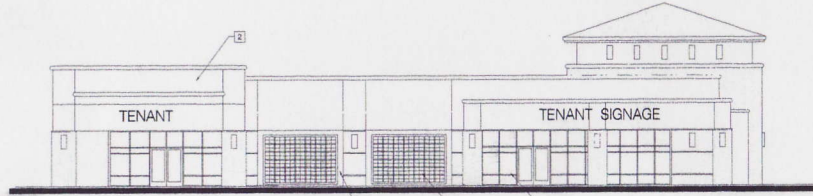
**SOUTH ELEVATION**



**WEST ELEVATION**



**NORTH ELEVATION**



**EAST ELEVATION**

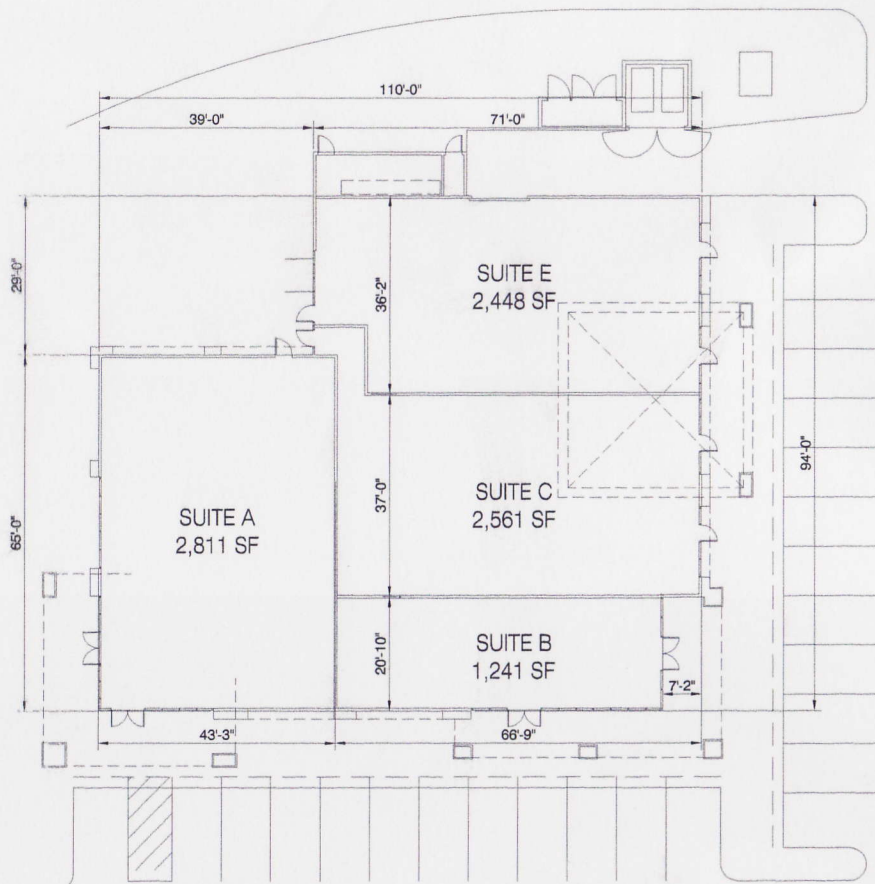
**PAGE PLAZA**  
HEMET, CALIFORNIA  
**PAGE PLAZA PARTNERS, LLC**  
C/O COOPER & COMPANY, INC.  
4801 WEST 96TH STREET  
OVERLAND PARK, KANSAS 66207  
P 913.648.8083 F 913.648.1045

**FINAL**

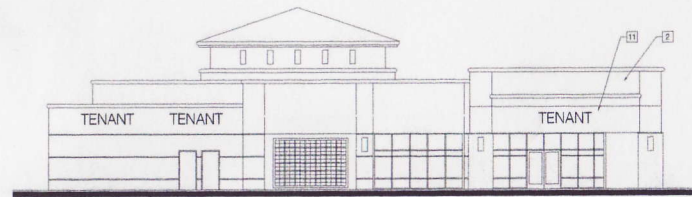
**Pierce/Cooley**  
Architects, Inc.  
18788 MacArthur Boulevard  
Suite 100  
Irvine, CA 92612  
949.453.7000  
949.453.7002



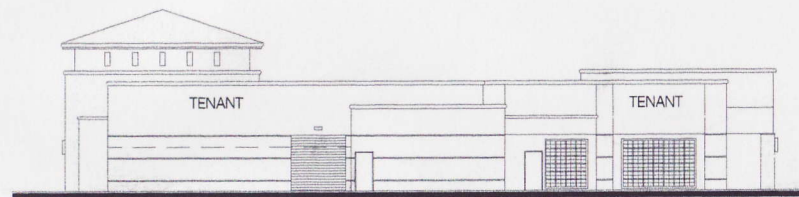
2/1/2002 Projects\02124 Page Plaza - Hemet\08 Drawings\08\_1 Design\Design Archives\02124 Bldg 9 050802.dwg, 30x42, 8/2/2005 4:24:33 PM, Adobe PDF, 11 x 17, 1:2,790



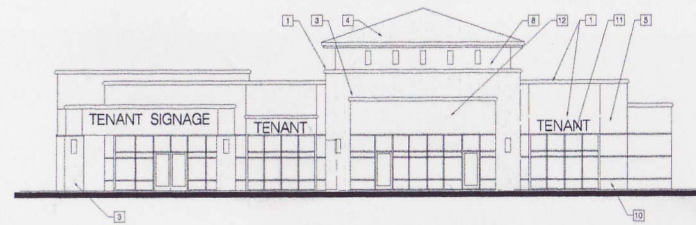
MATERIALS & FINISHES	
1	FOAM CORNICE WITH SMOOTH COAT STUCCO PLASTER FINISH, COLOR TO MATCH FRAZEE 8734W KINGLING WOOD
2	STUCCO PLASTER FINISH, COLOR TO MATCH FRAZEE 8800 "BURNT COPPER"
3	STONE VENEER ELDORADO STONE, MOUNTAIN LEDGE "SUCKERY"
4	EAGLE ROOFING AMERICAN HERITAGE ROANOKE BLEND, SHEET15
5	STUCCO PLASTER FINISH, COLOR TO MATCH FRAZEE 8720W "POVSEE TINT"
6	DECORATIVE LIGHT FIXTURE
7	METAL TRILUS, COLOR TO MATCH FRAZEE 8800 BLUECOT
8	STUCCO PLASTER FINISH, COLOR TO MATCH FRAZEE 8624M "SLEEPER GRAY"
9	ALUMINUM STOREFRONT, COLOR TO MATCH FRAZEE 8800 "BURNT COPPER"
10	STUCCO PLASTER FINISH, COLOR TO MATCH FRAZEE 8724M "MADONVILLE"
11	STUCCO PLASTER FINISH, COLOR TO MATCH FRAZEE 8722W "CEBBERT CASTLE"
12	SIGNAGE
13	OVERHEAD METAL SERVICE DOOR, COLOR TO MATCH ITEM 10



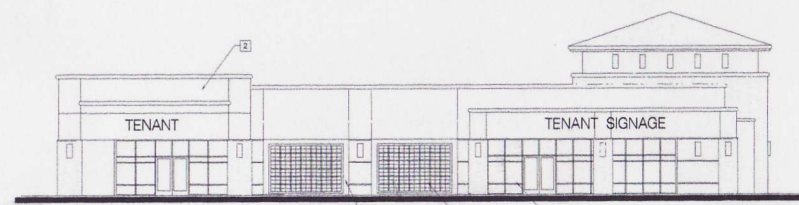
SOUTH ELEVATION



WEST ELEVATION



NORTH ELEVATION



EAST ELEVATION



SCALE: 1/8" = 1'  
0 4' 8' 16'

**BUILDING 9**

P.C.A PROJECT NUMBER: 02.124.40  
DATE: 02 AUGUST 2005

WE FIND THAT ALL LAND COVERAGE AND IMPROVEMENTS ARE SUBJECT TO ADJUSTMENT.  
ALL WORKS AND MATERIALS TO BE SUBJECT TO APPROVAL OF STATEMENT ARCHITECTS.  
ALL FINISHES AND SITE CONDITIONS ARE SUBJECT TO VARIATION.

**PAGE PLAZA  
HEMET, CALIFORNIA  
PAGE PLAZA PARTNERS, LLC**

C/O COOPER & COMPANY, INC.  
4801 WEST 96TH STREET  
OVERLAND PARK, KANSAS 66207  
P 913.648.8063 F 913.648.1045

**FINAL**

Pierce/Cooley  
Architects, Inc.  
16760 MacArthur Boulevard  
Suite 200  
Irvine, CA 92614  
(949) 261-7000  
© 2005 PIERCE/COOLEY ARCHITECTS, INC.

