



**A THREE BUILDING, CLASS A,
367,887 SF INDUSTRIAL PARK**



ROUND ROCK
45

ROUNDROCK45.COM

BUILDING 1: 2020 S. AW GRIMES
BUILDING 2: 2080 S. AW GRIMES
BUILDING 3: 2100 S. AW GRIMES

ROUND ROCK, TX 78681

Round Rock 45

THREE BUILDINGS TOTALING 367,887 SF

Round Rock 45 is a Class A industrial park located in the heart of thriving Round Rock, Texas. The campus features three state-of-the-art buildings totaling 367,887 square feet, as well as ample parking, docks, and trailer spaces. Round Rock 45 is easily accessible from I-35 and is close to Highway 45, State Highway 130 and MoPac Expressway, making it a convenient stop from any direction.

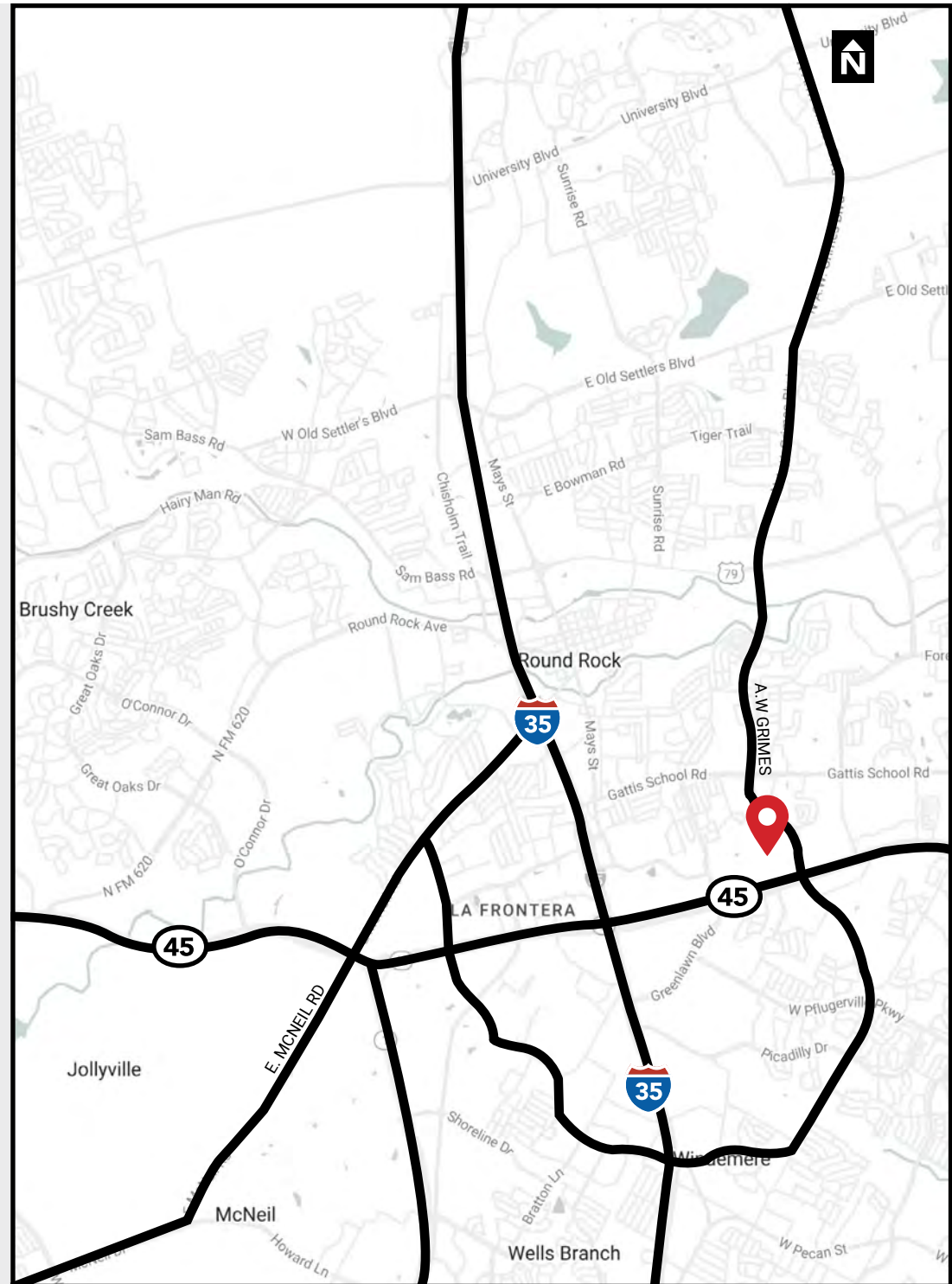
OPPORTUNITIES ABOUND AT ROUND ROCK 45

Round Rock 45 sits in the center of one of the fastest growing, most desirable towns in America. The industrial campus offers convenience to everything Round Rock has to offer, including nearby shopping, restaurants, and outdoor parks and activities. The area also offers affordable housing and highly ranked public schools.

ROUNDING OUT THE DETAILS

Each building at Round Rock 45 will have two ramps and a 200-foot building depth. Building 1, with 138,381 square feet, has been recently leased. Building 2, at 126,248 square feet, will feature 32 docks and 175 car parking spaces. Building 3, with 103,258 square feet, will offer 25 docks and 210 car parking spaces.

ROUNDROCK45.COM



BUILDING 1 - LEASED


- 138,381 SF
- Divisible to 17,500 SF
- Rear load
- 38 dock high doors
- 2 ramps
- 32' clear height
- 130' truck court depth
- 200' building depth
- 47' x 52' column spacing
- 30 trailer spaces
- 165 parking spaces (1.19:1000)

BUILDING 2

- 53,567 SF Available
- Divisible to 20,793 SF
- Rear load
- 12 dock high doors
- 1 ramp
- 32' clear height
- 210' truck court depth (shared)
- 200' building depth
- 47' x 52' column spacing
- 175 parking spaces (1.38:1000)

BUILDING 3

- 30,311 SF Available
- Rear load
- 5 dock high doors
- 1 ramp
- 32' clear height
- 210' truck court depth (shared)
- 200' building depth
- 47' x 52' column spacing
- 210 parking spaces (2.03:1000)

 VIEW SUITE 100 & 180

 VIEW SUITE 160



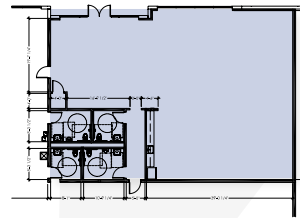
Building 2 - 53,567 SF Available

Spec Suite Plans

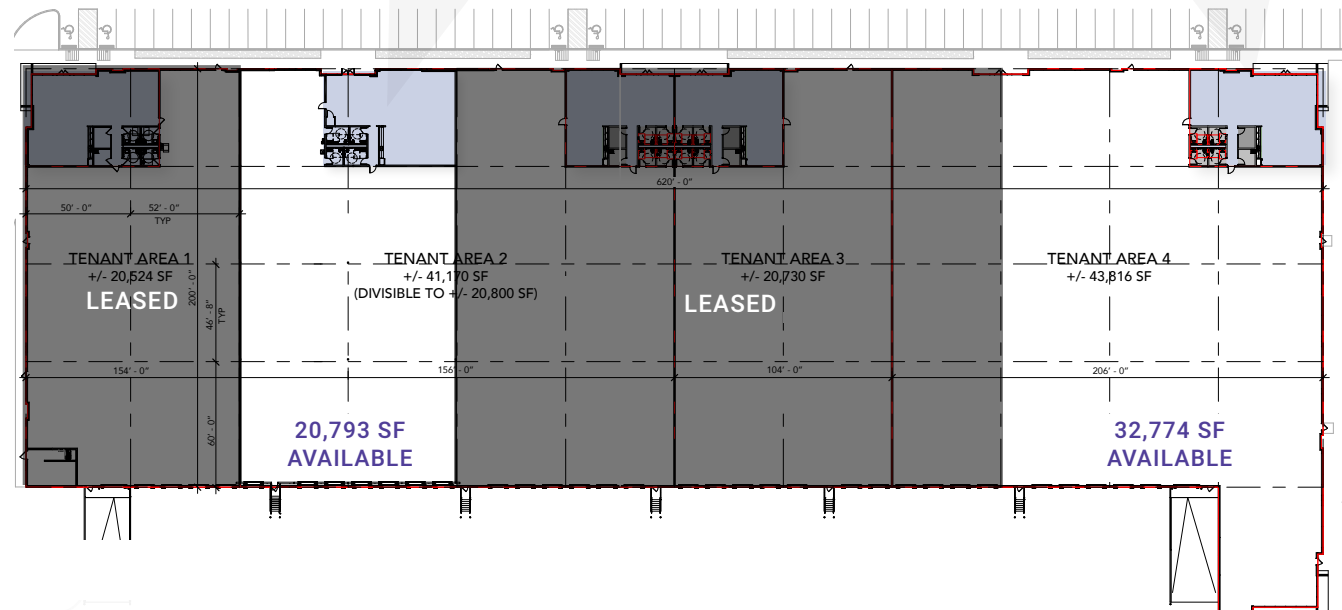
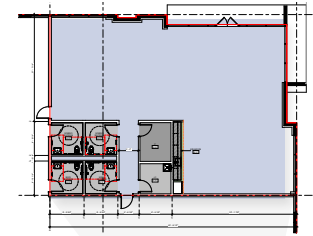
BUILDING 2

- 53,567 SF Available
- Divisible to 20,793 SF
- Rear load
- 12 dock high doors
- 1 ramp
- 32' clear height
- 210' truck court depth (shared)
- 200' building depth
- 47' x 52' column spacing
- 175 parking spaces (1.38:1000)

SUITE 180
2,927 SF



SUITE 100
2,918 SF



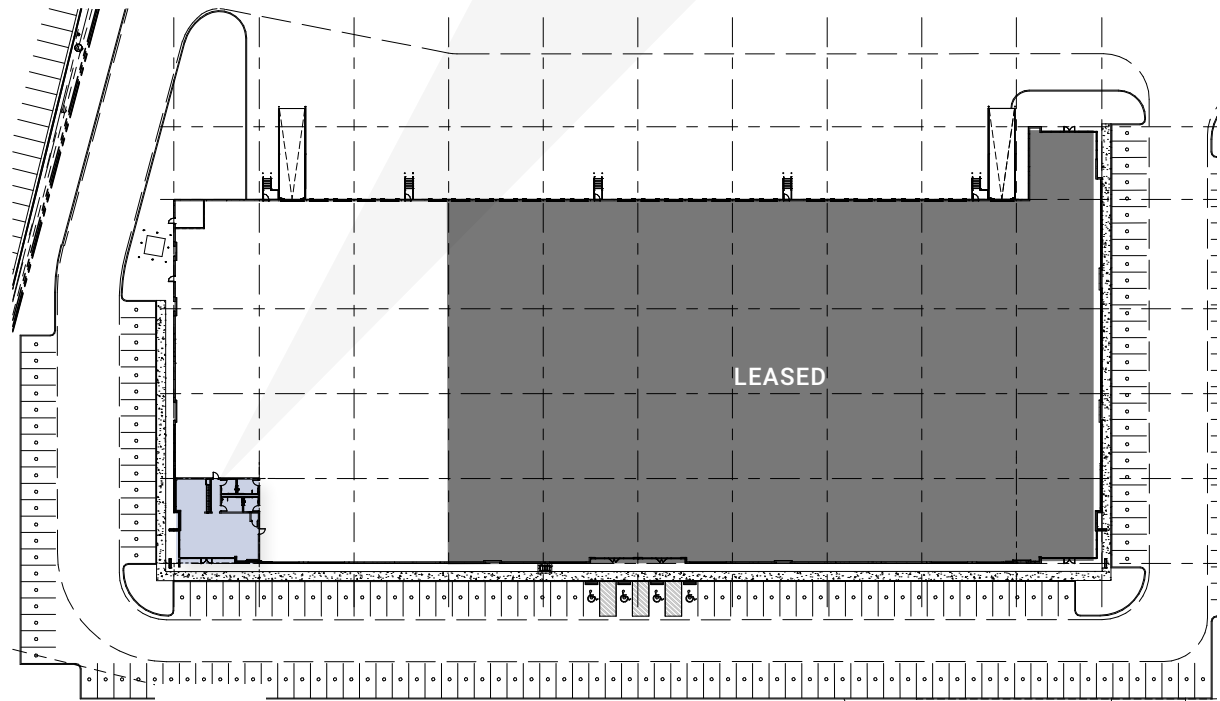
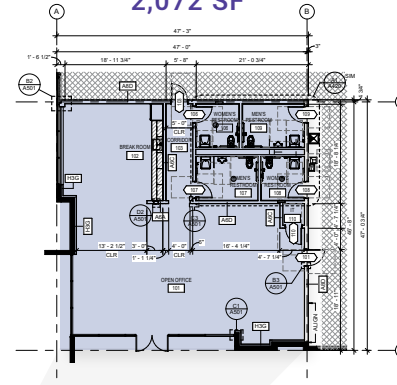
Building 3 - 30,311 SF Available

Spec Suite Plans

BUILDING 3

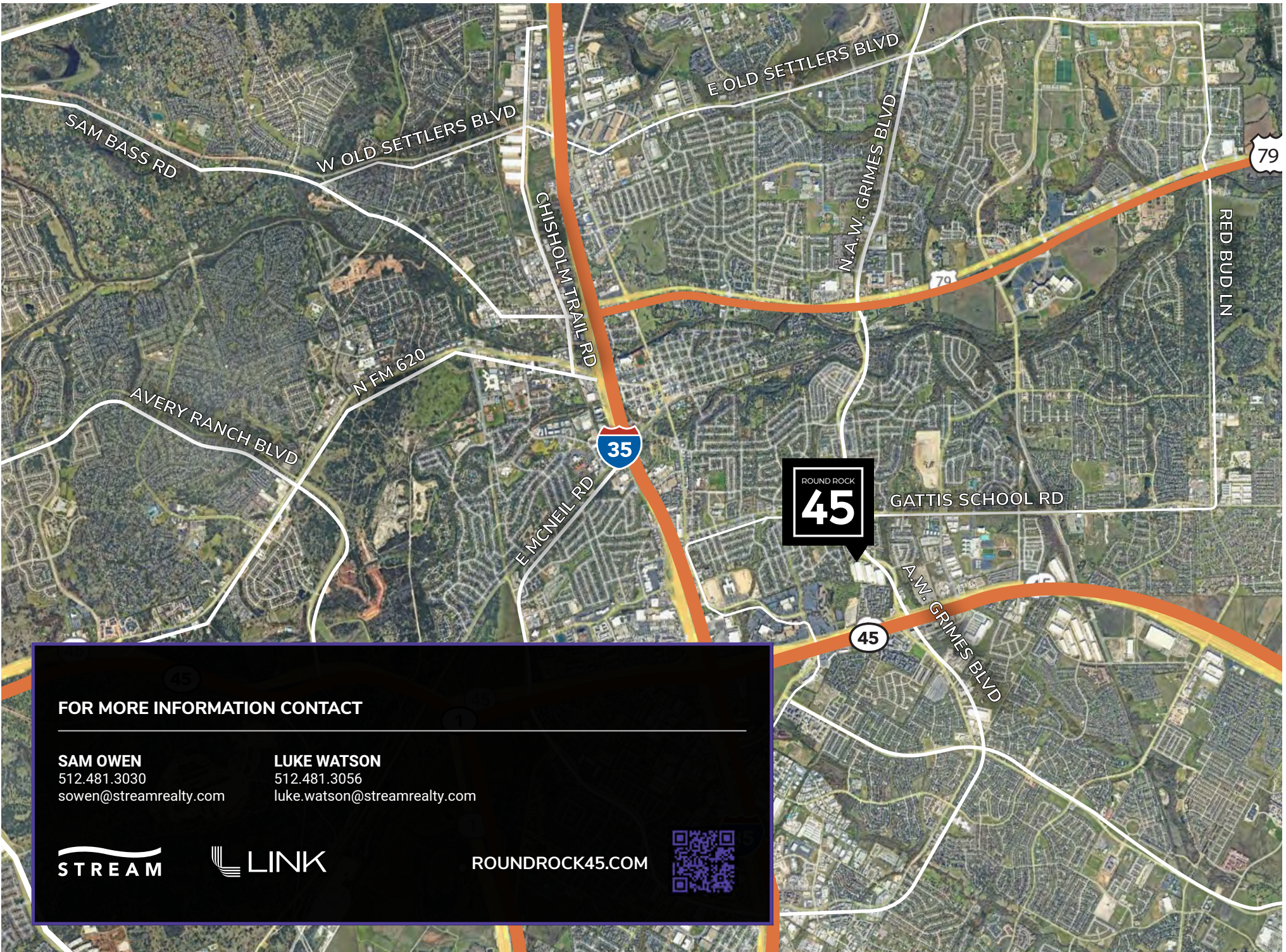
- 30,311 SF Available
- Rear load
- 5 dock high doors
- 1 ramp
- 32' clear height
- 210' truck court depth (shared)
- 200' building depth
- 47' x 52' column spacing
- 210 parking spaces (2.03:1000)

SUITE 160
2,072 SF



Round Rock 45





FOR MORE INFORMATION CONTACT

SAM OWEN
512.481.3030
sowen@streamrealty.com

LUKE WATSON
512.481.3056
luke.watson@streamrealty.com



ROUNDROCK45.COM

