

Northlake oakland



MATTHEW HOLMES |

415.729.9394 |

MHOLMES@RETAILWESTINC.COM |

#01117082

retailwest


HOLLAND

PARTNER GROUP



Northlake oakland

**OAKLAND'S
NEWEST AND
MOST VIBRANT
DISTRICT.**



VESPR

Oakland's newest mixed-use project including 419 skyrise apartment units, 166 dedicated retail parking stalls in garage, 32,285 SF anchor, ground floor retail, and restaurant space with patio option.

RETAIL AVAILABILITIES :

12,012 SF (divisible)



THE Lark UPTOWN

The 410,453 SF mixed-use project, towering 11 and 12-story mid-rise including 330 residential units, 12,025 SF of double height ground floor retail, 213 parking stalls (including 26 dedicated to retail), and a 6,911 SF public walking plaza.

RETAIL AVAILABILITIES :

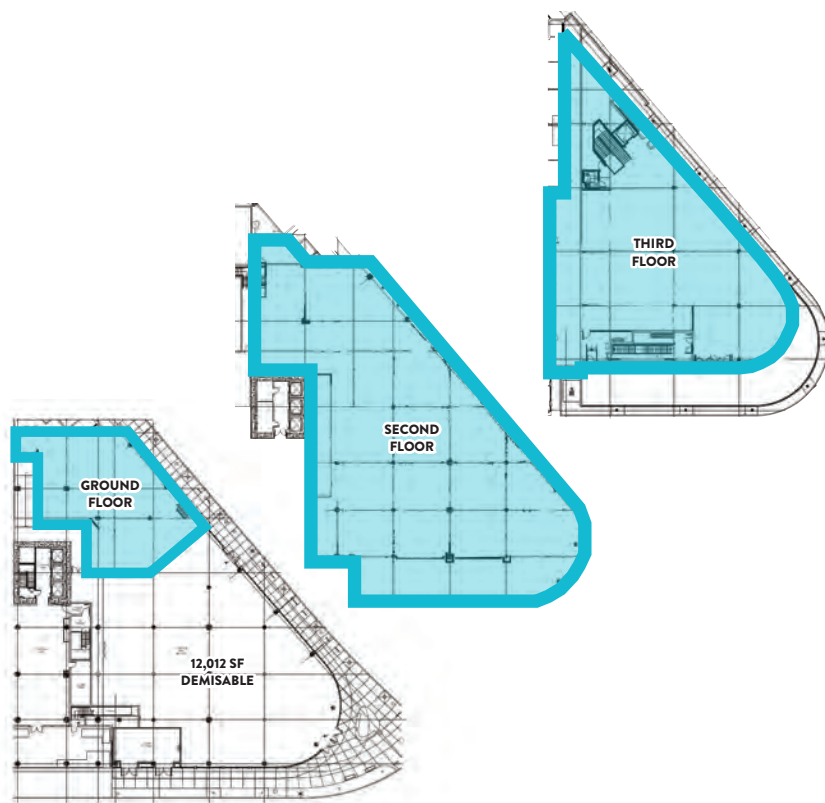
5,250 SF (divisible), 4,297 SF restaurant space (vented with grease tray), & Retail Collective - 8 stalls, starting at 150 SF, can be combined.

VESPR



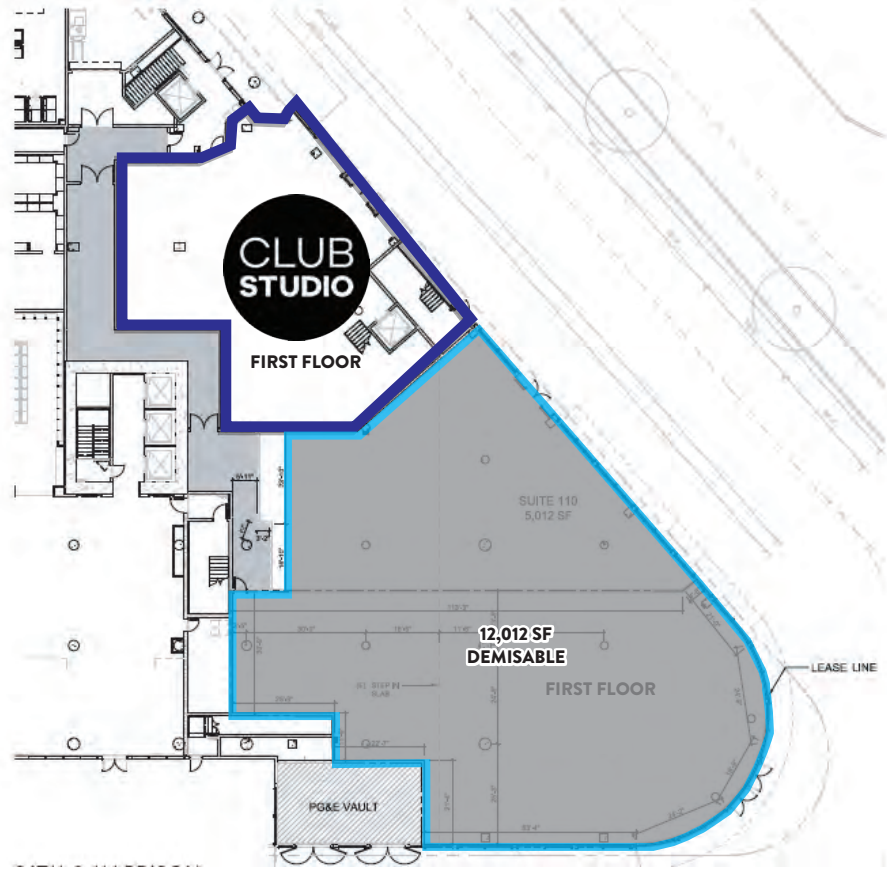
CLUB STUDIO

COMING SOON

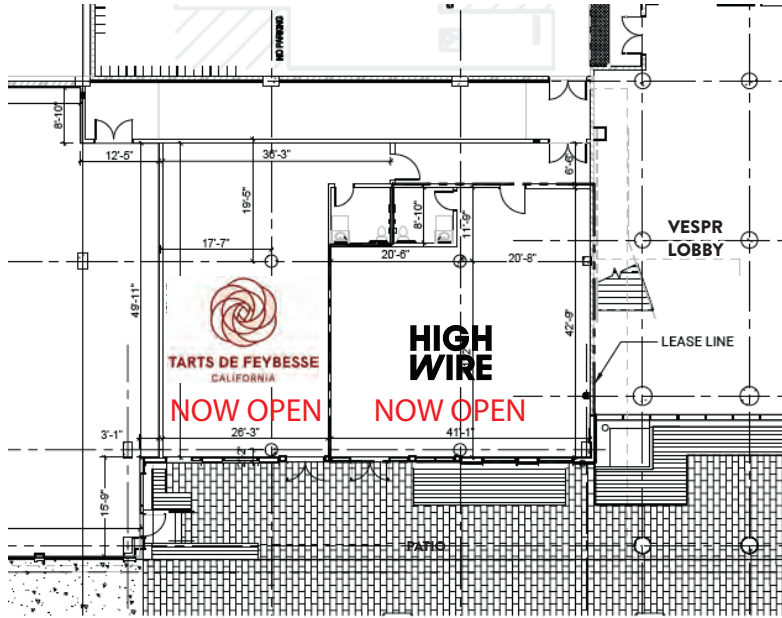


VESPR

12,012 SF retail space available - demisable



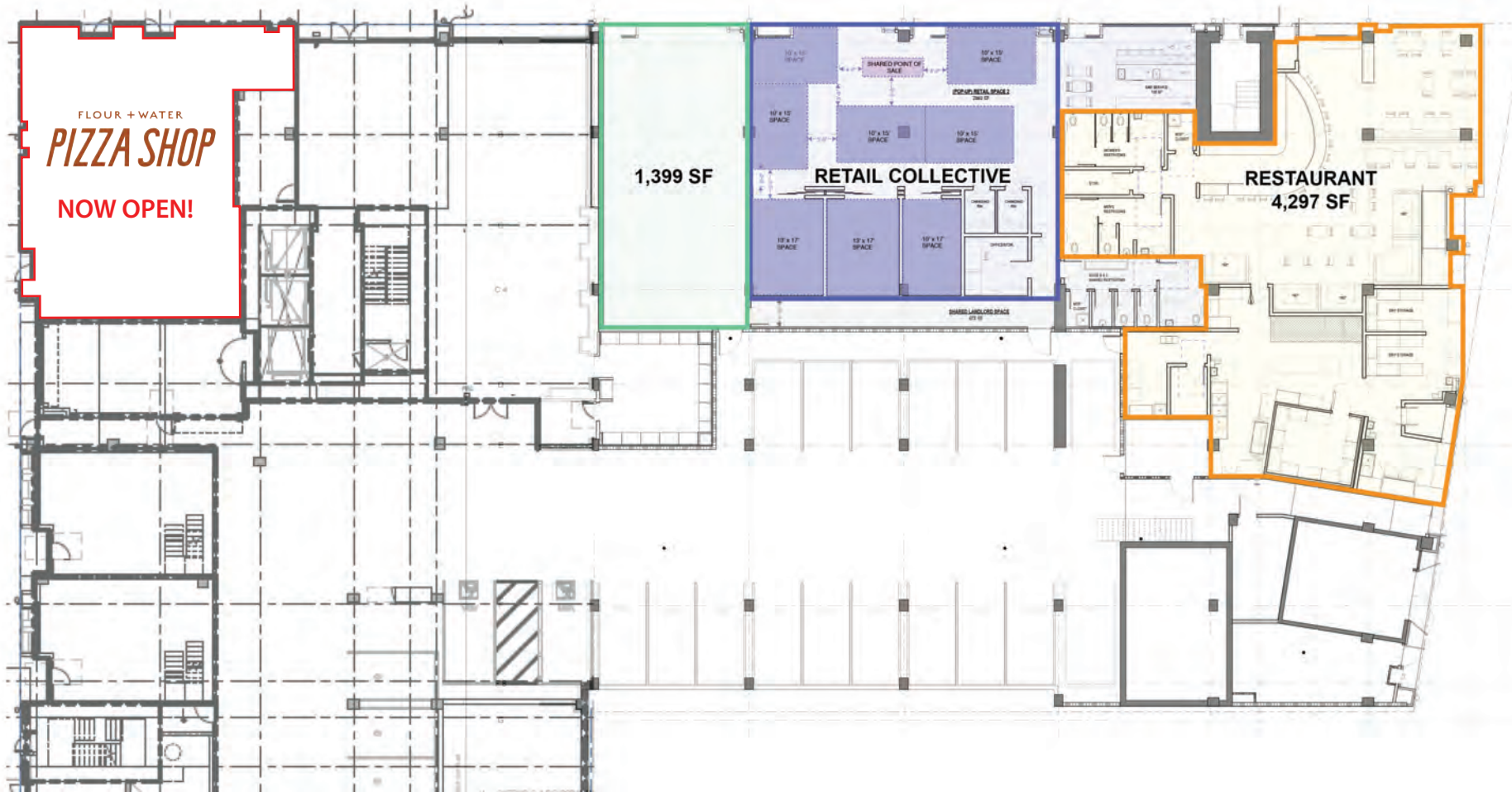
VESPR





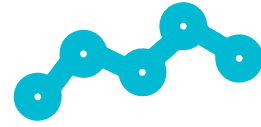
AVAILABILITIES

1,399 SF, 4,297 SF restaurant space,
Retail Collective - 8 stalls, starting at 150 SF, can be combined

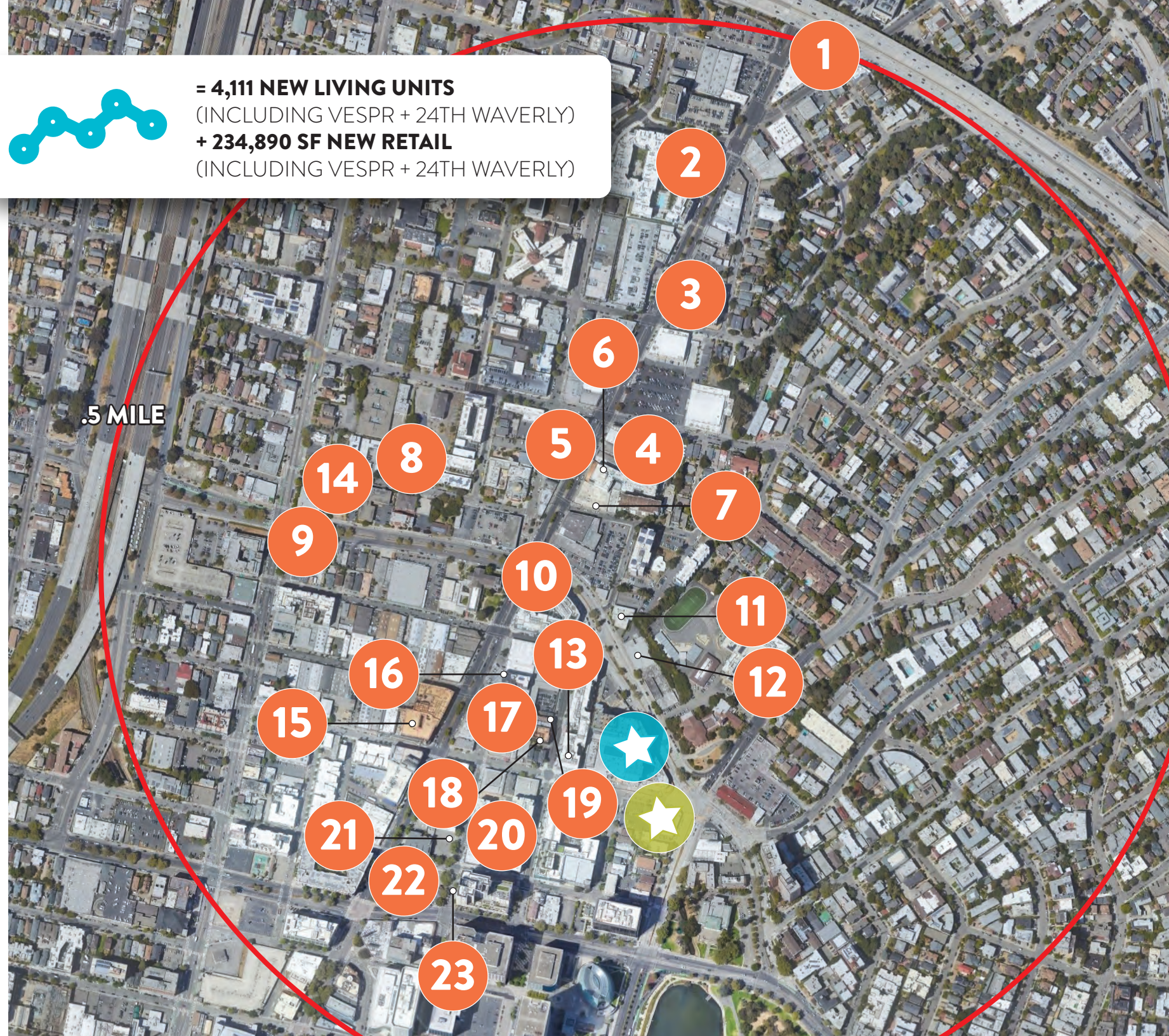


DEVELOPMENTS - .5 MILE

- 1 **3403 PIEDMONT AVE** - 127 LIVING UNITS (PRECONSTRUCTION)
- 2 **3093 BROADWAY** - 423 LIVING UNITS (COMPLETE)
- 3 **3000 BROADWAY** - 127 LIVING UNITS + 8,000 SF RETAIL (UNDER CONSTRUCTION)
- 4 **295 29TH STREET** - 91 LIVING UNITS (COMPLETE)
- 5 **2855 BROADWAY** - 68 LIVING UNITS + 9,200 SF RETAIL (COMPLETE)
- 6 **2820 BROADWAY** - 103 LIVING UNITS + 2,228 SF RETAIL (COMPLETE)
- 7 **2800 BROADWAY** - 47 LIVING UNITS + 6,130 SF RETAIL (APPROVED)
- 8 **424 28TH STREET** - 47 LIVING UNITS (APPROVED)
- 9 **2600 TELEGRAPH** - 225 LIVING UNITS + 6,000 SF RETAIL (APPROVED)
- 10 **27TH & BROADWAY** - 253 LIVING UNITS + 36,288 SF RETAIL (COMPLETE)
- 11 **2630 BROADWAY** - 253 LIVING UNITS + 26,288 SF RETAIL
- 12 **296 27TH STREET** - 198 LIVING UNITS (PENDING)
- 13 **2400 VALDEZ STREET** - 225 LIVING UNITS + 23,465 SF RETAIL
- 14 **451 28TH STREET** - 54 LIVING UNITS (APPROVED)
- 15 **2401 BROADWAY** - 72 LIVING UNITS UNITS + 159 KEY HOTEL + 17,439 SF RETAIL (COMPLETE)
- 16 **2500 WEBSTER ST** - 30 LIVING UNITS + 6,250 SF RETAIL (UNDER CONSTRUCTION)
- 17 **2424 WEBSTER STREET** - 49,000 SF OFFICE + 6,250 SF RETAIL (APPROVED)
- 18 **2415 VALDEZ STREET** - 89 LIVING UNITS + 1,500 SF RETAIL (UNDER CONSTRUCTION)
- 19 **2425 VALDEZ STREET** - 71 LIVING UNITS + 1,024 SF RETAIL (COMPLETE)
- 20 **2315 VALDEZ STREET** - 235 LIVING UNITS + 15,000 SF RETAIL (COMPLETE)
- 21 **2305 WEBSTER STREET** - 130 LIVING UNITS + 3,000 SF RETAIL (PENDING)
- 22 **2270 BROADWAY** - 223 LIVING UNITS + 8,000 SF RETAIL (PENDING)
- 23 **88 GRAND AVE** - 275 LIVING UNITS + 1,000 SF RETAIL (APPROVED)



= 4,111 NEW LIVING UNITS
(INCLUDING VESPR + 24TH WAVERLY)
+ 234,890 SF NEW RETAIL
(INCLUDING VESPR + 24TH WAVERLY)



VISITOR STATISTICS

FOR WHOLE FOODS MARKET AT 230 BAY PLACE, OAKLAND



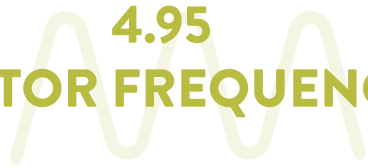
1.4M

TOTAL VISITS A YEAR



275.2K

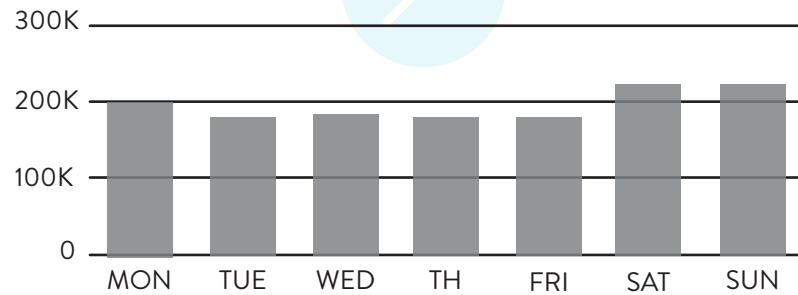
UNIQUE VISITORS



4.95

VISITOR FREQUENCY

DAILY VISITS



DEMOGRAPHICS

POPULATION



1M. 57,522
2M. 291,966
3M. 527,514

EMPLOYEES



1M. 68,327
2M. 166,909
3M. 261,399

MEDIAN HH INCOME



1M. \$79,068
2M. \$99,682
3M. \$100,997

HOUSEHOLDS



1M. 31,260
2M. 128,284
3M. 219,273

MATTHEW HOLMES

415.729.9394
MHOLMES@RETAILWESTINC.COM
#01117082

retailwest

