

# NEW CAR SALES LOT FOR LEASE

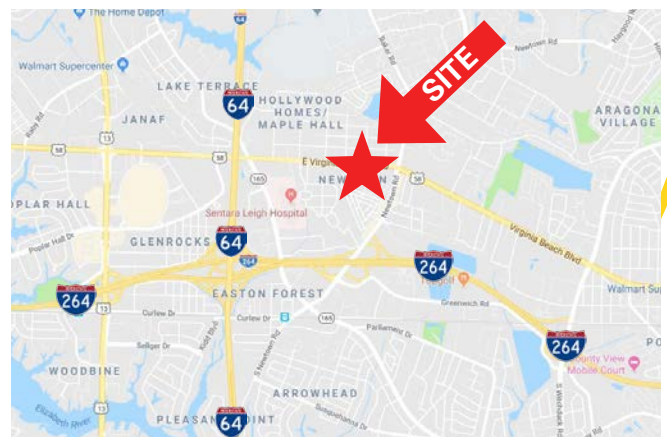
## 6611 E. Virginia Beach Boulevard Norfolk, VA



- 1.69 acres
- ±8,889 sf of buildings, each attached and interconnected
- Buildings improved as showroom, sales offices, customer lounge, customer service drive-thru and garage
- Currently occupied by First Team Subaru (relocating in 1Q '20, or sooner by notice from Landlord)
- Garage has 2 overhead doors and service drive-thru has 4 overheads (all clear by 12')
- Zoning: CR (Commercial Regional)
- Accessible to I-264 and I-64
- Lease: \$18,500.00, NNN, per month

### Demographics (2019)

	1 Mile	3 Miles	5 Miles
Population	14,462	99,014	300,104
Households	5,371	38,601	113,653
Ave. HH Inc.	\$61,869	\$81,315	\$80,578



CONTACT:

**BOB KING**  
(757) 640-8207  
[bobking@harveylindsay.com](mailto:bobking@harveylindsay.com)

**HARVEY LINDSAY**  
COMMERCIAL REAL ESTATE

*A Tradition of Forward Thinking*

# NEW CAR SALES LOT FOR LEASE

6611 E. Virginia Beach Boulevard  
Norfolk, VA



CONTACT:

**BOB KING**

**(757) 640-8207**

[bobking@harveylindsay.com](mailto:bobking@harveylindsay.com)

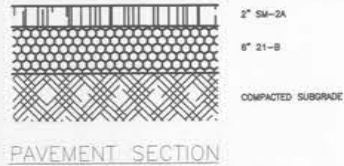
**HARVEY LINDSAY**

COMMERCIAL REAL ESTATE

*A Tradition of Forward Thinking*

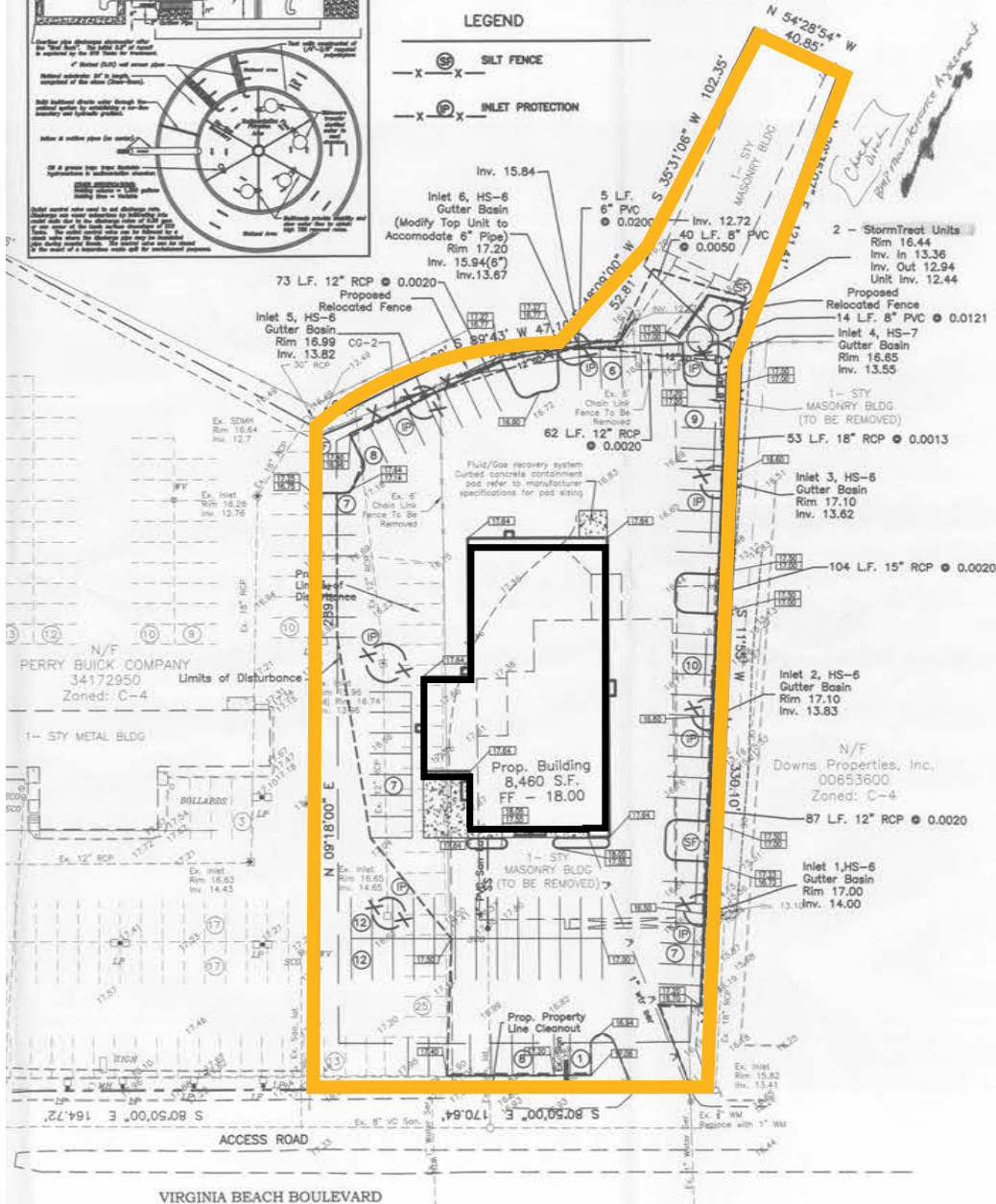
The information contained herein has been obtained from sources believed to be reliable but is not warranted.  
We cannot be responsible for errors, omissions, withdrawal, or prior lease or sale.





### LEGEND

- X—(SF)—X— SILT FENCE
- X—(IP)—X— INLET PROTECTION



PROJECT No:	No.	DATE	REVISION
03-015			
DATE 07/10/03			
SCALE 1" = 30'	4	12/08/03	Revised Inlet Grade
SAS	3	11/20/03	Deleted Detention Basin. Added StormTreat Units
DES.	2	11/20/03	ADRESSED CITY COMMENTS DATED 11/03/03
DR.	1	11/04/03	ADRESSED CITY COMMENTS DATED 06/15/03
SAS			
END.			

**Site Development**  
**Civil Engineering - Surveying**  
2584 Piney Bark Drive  
Virginia Beach, VA 23456  
(757) 430-9909 Fax: (757) 430-8240  
[www.huntchbeconsulting.com](http://www.huntchbeconsulting.com)



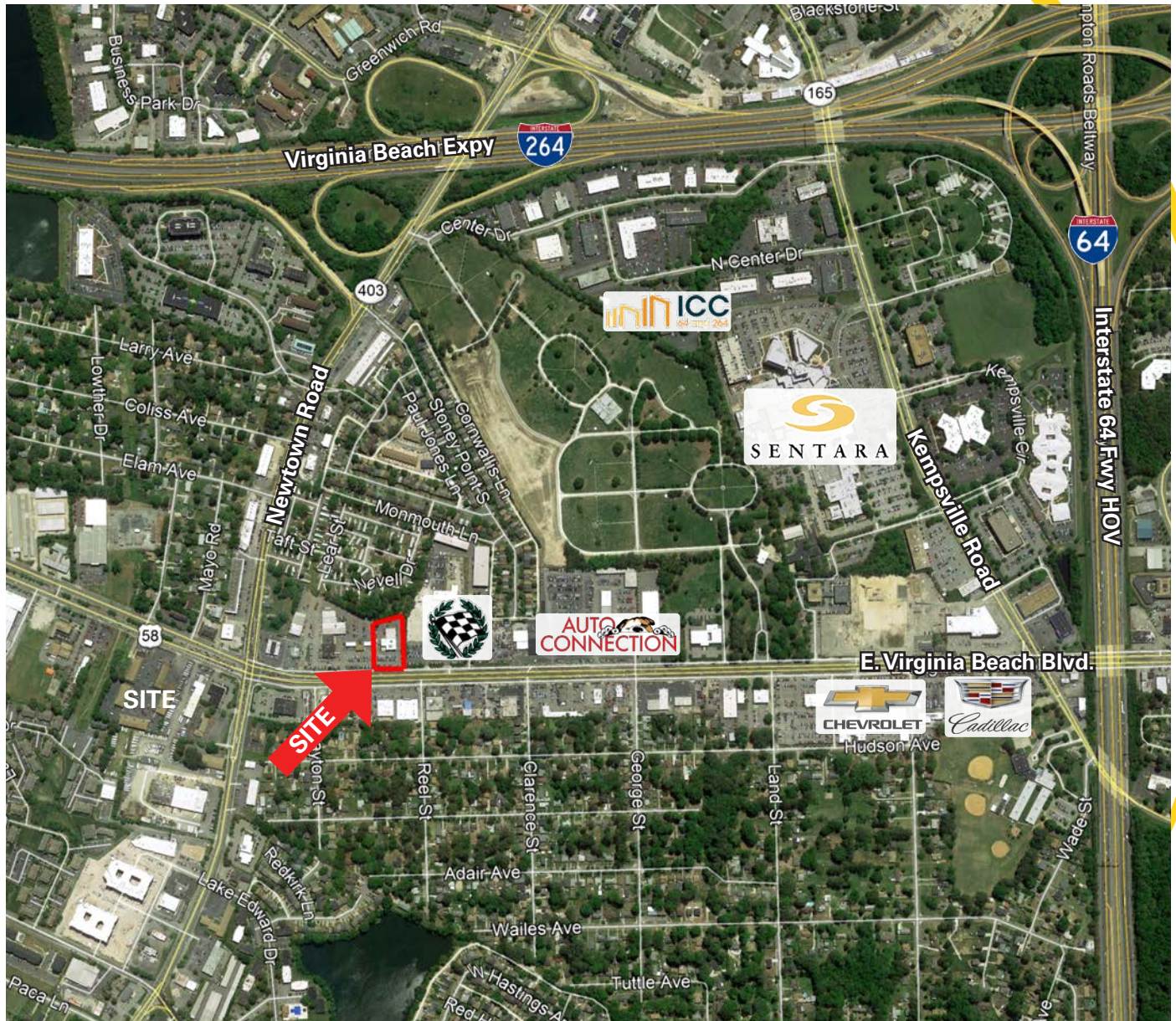
**NEW SUBARU SHOWROOM  
& SERVICE CENTER**  
PERRY AUTOMOTIVES  
VIRGINIA BEACH BOULEVARD, NORFOLK, VIRGINIA  
**GRADING PLAN**

The information contained herein has been obtained from sources believed to be reliable but is not warranted. We cannot be responsible for errors, omissions, withdrawal, or prior lease or sale.



# NEW CAR SALES LOT FOR LEASE

## 6611 E. Virginia Beach Boulevard Norfolk, VA



CONTACT:

**BOB KING**

**(757) 640-8207**

[bobking@harveylindsay.com](mailto:bobking@harveylindsay.com)

**HARVEY LINDSAY**

COMMERCIAL REAL ESTATE

*A Tradition of Forward Thinking*

The information contained herein has been obtained from sources believed to be reliable but is not warranted.

We cannot be responsible for errors, omissions, withdrawal, or prior lease or sale.