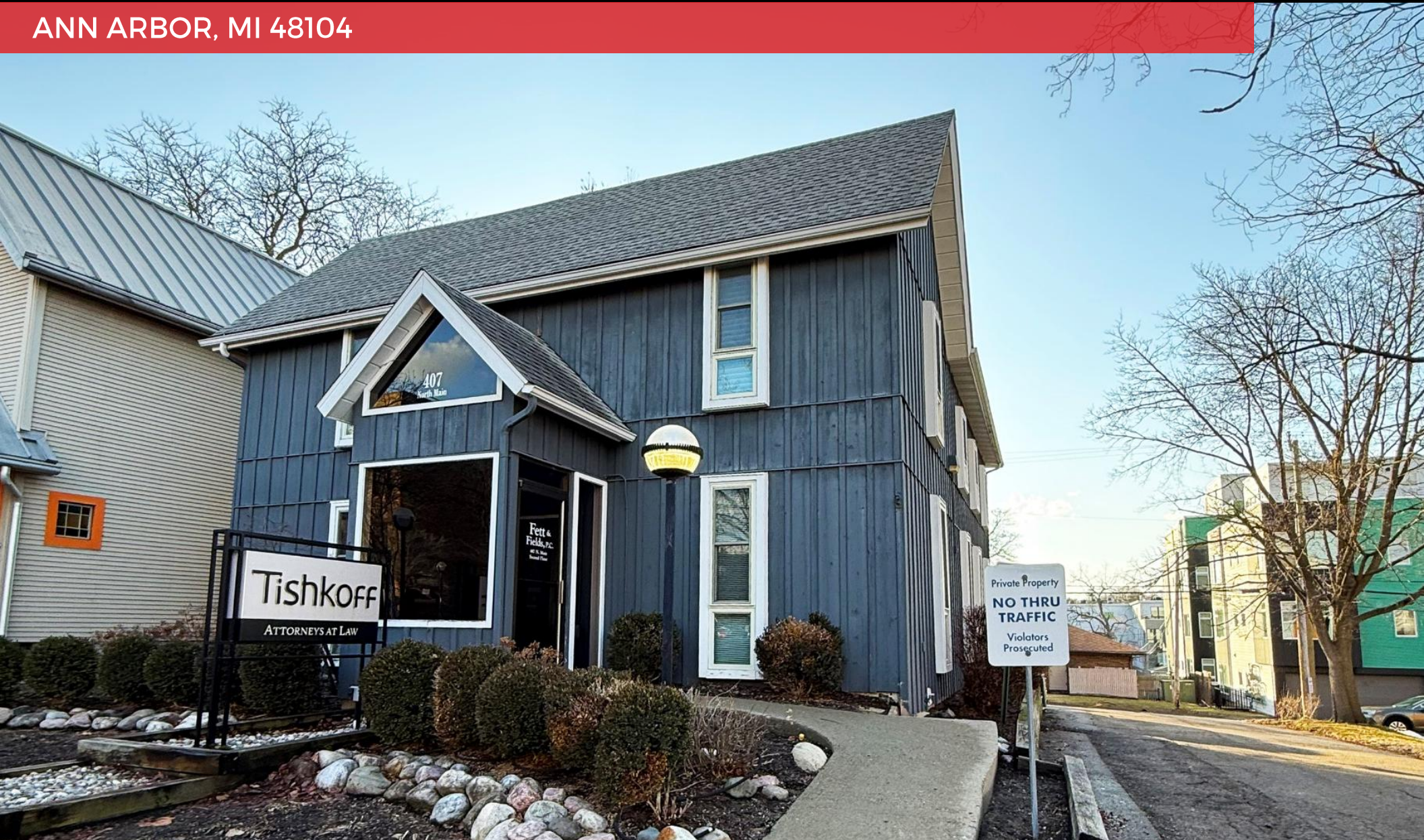


FOR LEASE

407 N MAIN ST

ANN ARBOR, MI 48104



JACKSON SAVAGE
ASSOCIATE | BROKERAGE SERVICES
P: 734.649.4353 E: JACKSON.SAVAGE@FREG.COM

ANDREW J. BOWER
VICE PRESIDENT | BROKERAGE SERVICES
P: 248.848.4193 E: ANDREW.BOWER@FREG.COM

407 N MAIN ST

PROPERTY HIGHLIGHTS

- Boutique Office Building for Lease in downtown Ann Arbor
- Up to 3,050 SF available
- High-Visibility frontage along Main Street
- Immediate occupancy
- Multitude of accessible amenities – cafes, restaurants, and retail
- Dedicated on-site parking
- Immediate access to M-14 & I-94
- Flexible office layouts
- Professional office environment ideal for Law, CPA, Financial Advisory, Medical Practices
- Lease Rate: \$19/SF MG

Building Size **3,050 SF**

Property Type **Office**

City **Ann Arbor**

Lease Rate **\$19/SF MG**



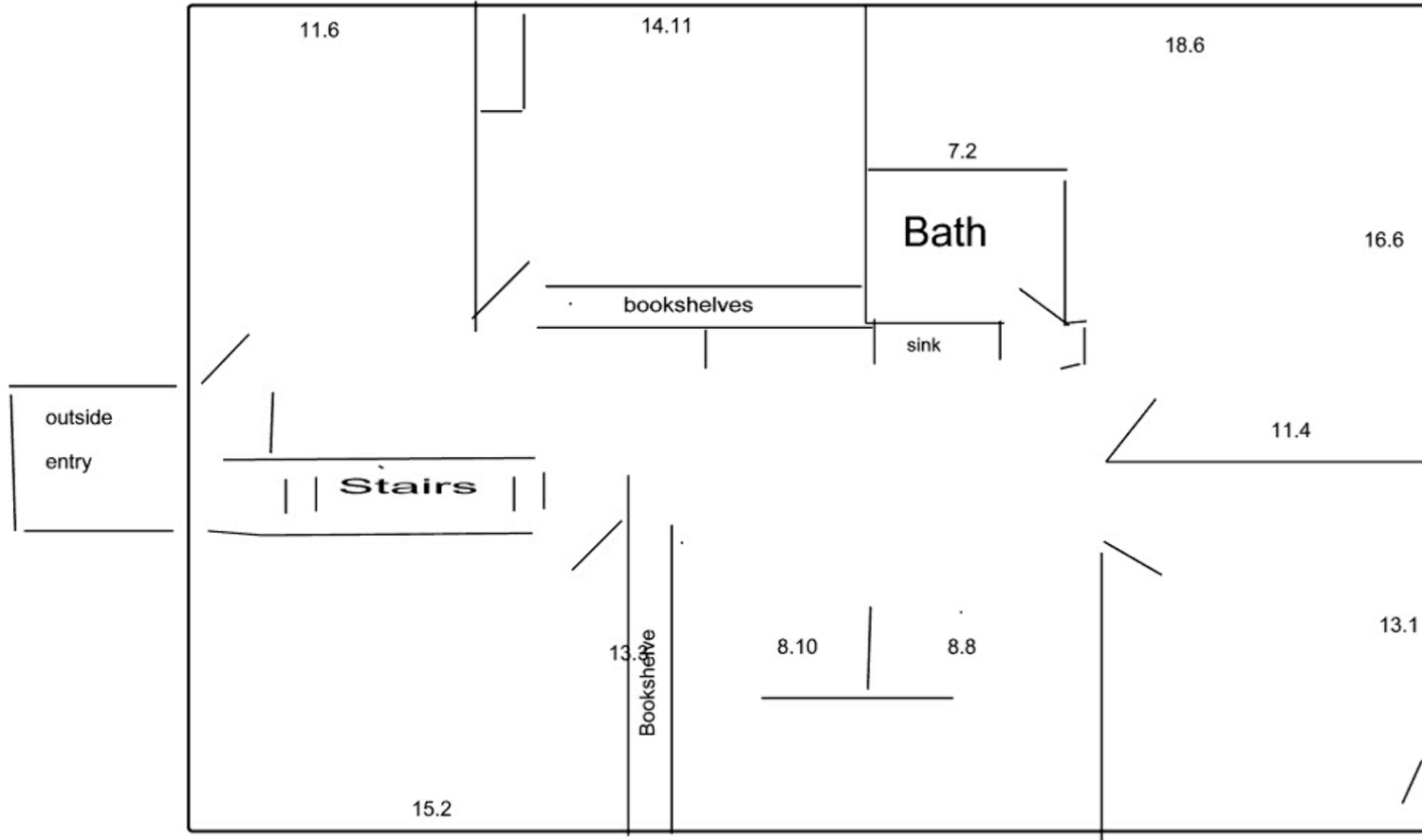
PROPERTY HIGHLIGHTS

The information provided herein along with any images or attachment(s) was obtained from sources believed to be reliable, however, Friedman Real Estate makes no guarantees, warranties, or representations as to the completeness or accuracy of such information and legal counsel is advised. All information provided is subject to verification and no liability for reliance on such information or errors or omissions is assumed. The presentation of this property is submitted subject to errors, omissions, change of price or conditions, prior sale or lease, or withdrawal without notice. Copyright © 2025 Friedman Real Estate. All rights reserved.

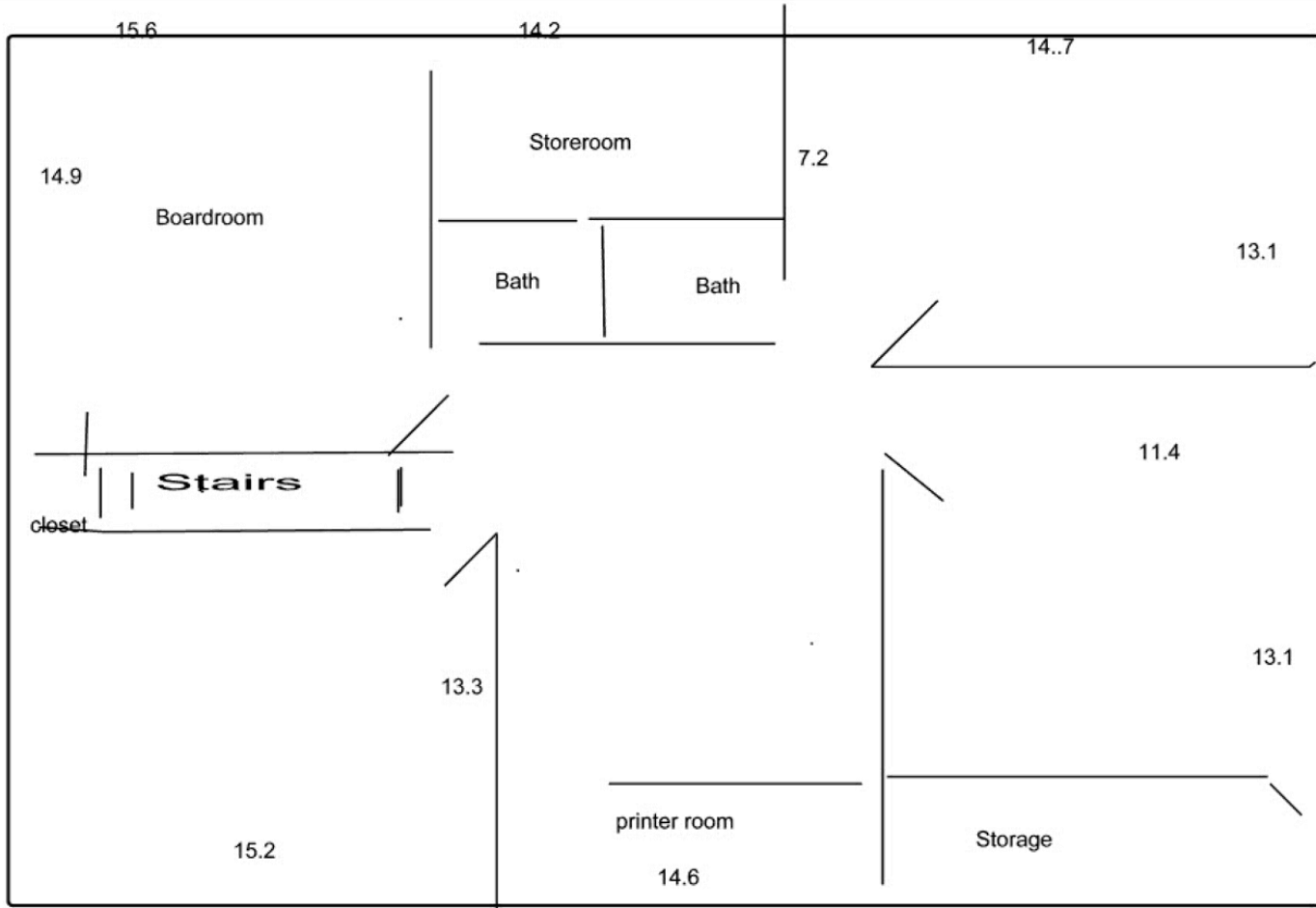


ADDITIONAL PHOTOS

407 N MAIN ST
1ST FLOOR



407 N MAIN ST
2ND FLOOR



NEARBY AMENITIES





THE CITY OF ANN ARBOR

Located in Southeast Michigan, Ann Arbor is widely recognized as one of the Midwest's most dynamic and forward-thinking communities. Anchored by the presence of the University of Michigan, the city benefits from a steady influx of talent, innovation, and economic stability. Its diverse economy spans technology, healthcare, research, and professional services, supported by a highly educated workforce and a strong entrepreneurial ecosystem. The downtown and surrounding areas offer a vibrant mix of restaurants, retail, and cultural amenities, contributing to an energetic environment that attracts both established companies and emerging businesses.

Ann Arbor's strategic location provides convenient access to major transportation corridors, including I-94 and US-23, as well as proximity to Detroit and Detroit Metropolitan Airport. The city consistently ranks among the top places to live and work in the United States, driven by its high quality of life, strong infrastructure, and collaborative business community. With a balance of urban energy and suburban accessibility, Ann Arbor continues to support sustained growth and long-term investment across a wide range of industries.

ANN ARBOR, MI

EST POPULATION	±125,000
HOUSEHOLDS	±51,500
AVG HH INCOME	±\$122,000

CREATING
VALUE
BEYOND
REAL
ESTATE



JACKSON SAVAGE | ASSOCIATE | BROKERAGE SERVICES
ANDREW J. BOWER | VICE PRESIDENT | BROKERAGE SERVICES

FRIEDMAN REAL ESTATE | 34975 W. 12 MILE ROAD | FARMINGTON HILLS, MI 48331 | FRIEDMANREALESTATE.COM

