



SUITES prof./medical w sinks COMPARE TO REGUS

64 N Pecos Rd, Henderson, NV 89074



Michael Pontoni

Michael R. Pontoni, Esq., LL.M.
64 N Pecos Rd, Henderson, NV 89074
pontonioffice@lvcoxmail.com
(702) 374-8369

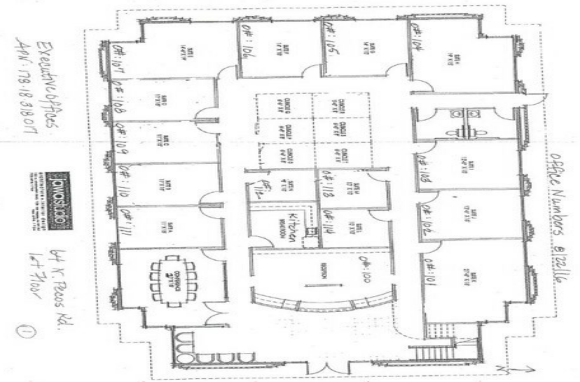


SUITES prof./medical w sinks COMPARE TO REGUS

Upon Request

These are full service finished suites with all amenities renting for a single price. Sink and Drains in some suites. Reception, U.S. mail, one price for everything including utilities, wifi, janitorial, reception, etc....

- Quiet and professional. Newly updated for fresh and appealing look. Great mix of professionals. Sink and Drain for medical in some offices.



Rental Rate:	Upon Request
Property Type:	Office
Property Subtype:	Medical
Building Class:	B
Rentable Building Area:	6,000 SF
Year Built:	2000
Walk Score ®:	46 (Car-Dependent)
Transit Score ®:	28 (Some Transit)
Rental Rate Mo:	Upon Request

1st Floor Ste Cubicle S

Space Available	70 SF
Rental Rate	Upon Request
Date Available	Now
Service Type	Negotiable
Built Out As	Professional Services
Space Type	Relet
Space Use	Office
Lease Term	Negotiable

Major Tenant Information

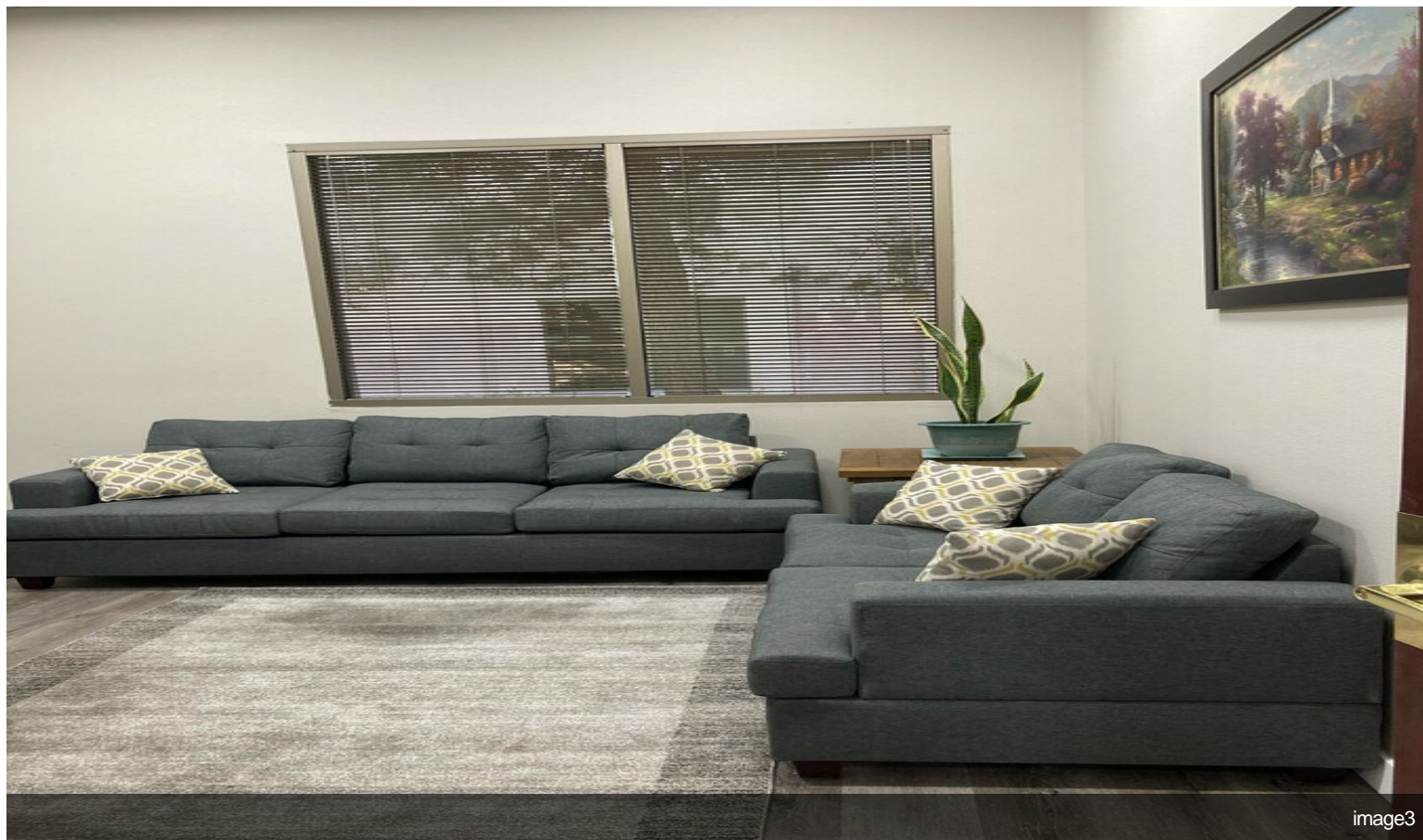
Tenant	SF Occupied	Lease Expired
Avid Medical Supply, Inc.	-	
Brokers Realty	-	
Brokers Realty	-	
Functional Patterns	-	
Heroes Caregiving	-	
Jacobson Law Office	-	
Lucid Technologies Inc.	-	
Michael R. Pontoni, Esq., LL.M.	-	
Primerica	320	December 2021
Radford J. Smith, Esq., Attorneys at Law	-	
SONV Properties	-	
WeCareGa Medical LLC	-	



64 N Pecos Rd, Henderson, NV 89074

These are full service finished suites with all amenities renting for a single price. Sink and Drains in some suites. Reception, U.S. mail, one price for everything including utilities, wifi, janitorial, reception, etc.

Property Photos



Property Photos



IMG_1328

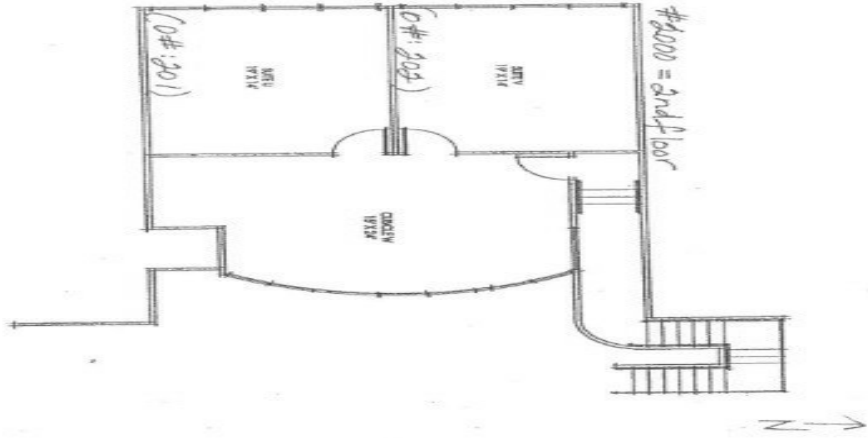


Building Photo

Property Photos



Executive Offices
 APR: 178-18-318-017
 64 N. Teas Rd.
 2nd floor



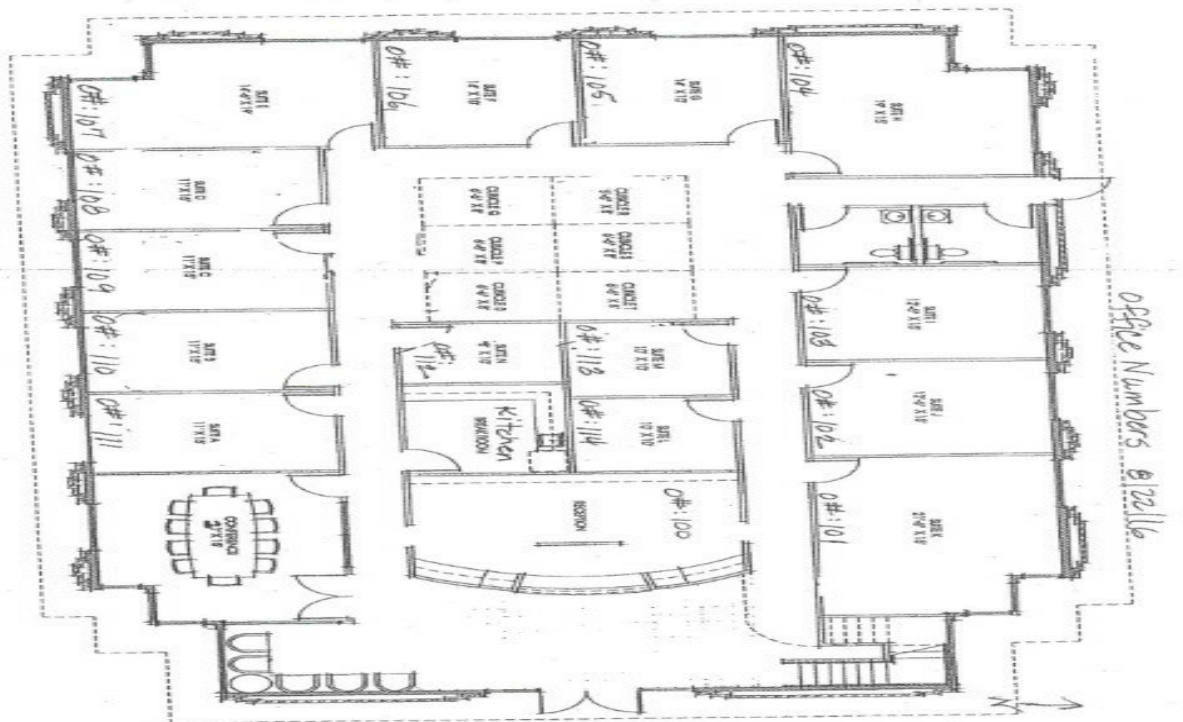
②

Site Plan

Executive Offices
 APR: 178-18-318-017



64 N. Teas Rd.
 1st floor



①

Site Plan