



Single-Tenant Flex Building For Lease

Inland Business Centre

14300-14306 W. 105th Street, Lenexa, Kansas

Jack Higgins

Senior Vice President

+1 816 556 1170

jack.higgins@colliers.com

Ed Elder

President

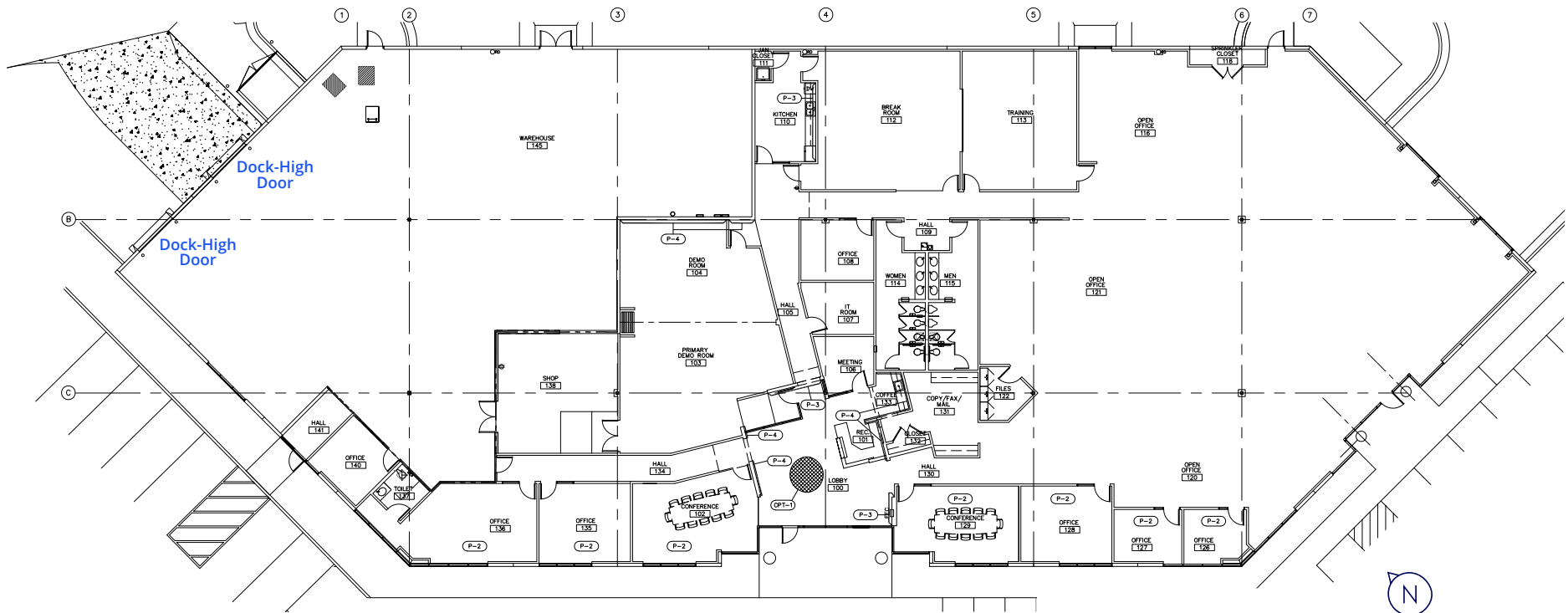
+1 816 556 1135

ed.elder@colliers.com

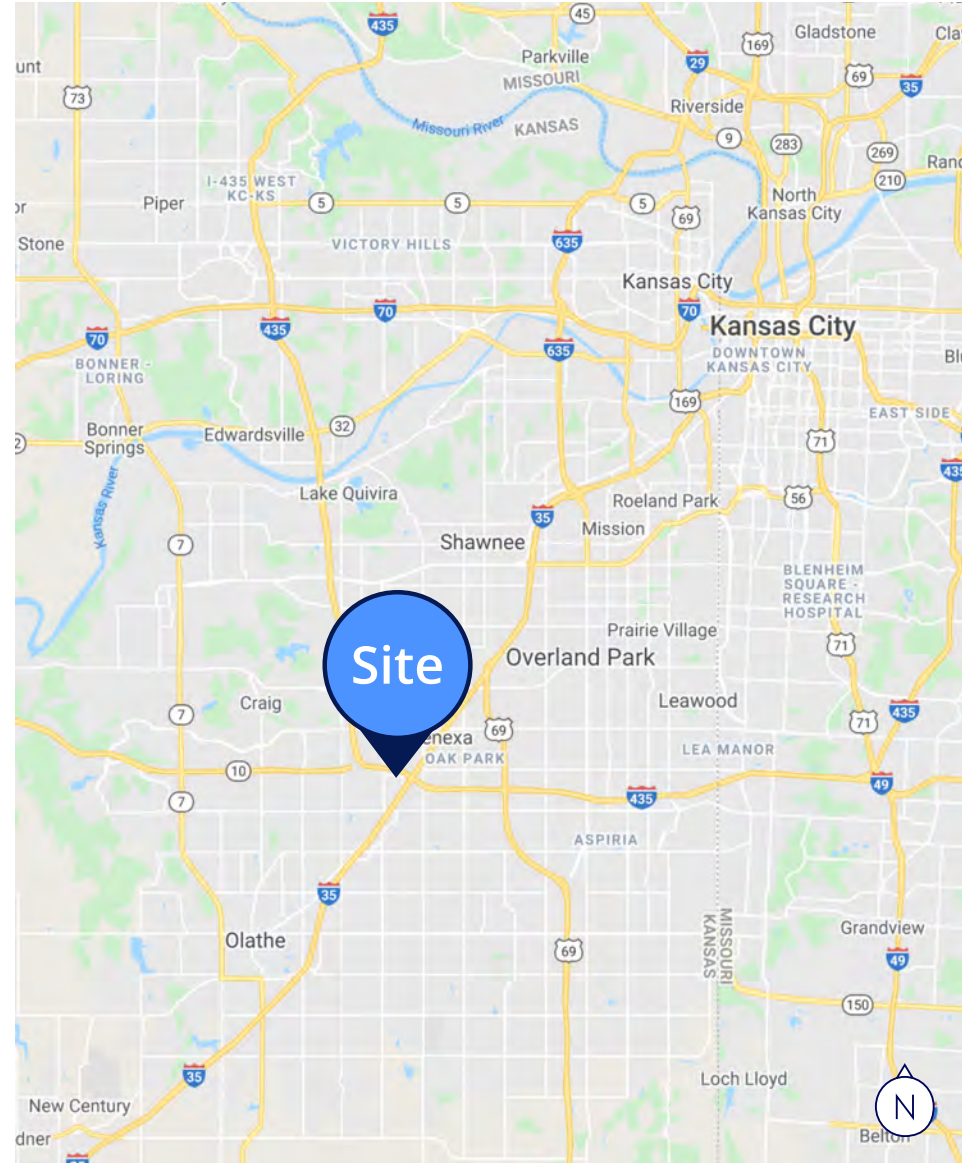
Property Overview

Building Size:	22,228± SF
Office:	15,945± SF
Finishes:	Class A
Loading:	Two (2) dock-high doors
Clear Height:	18'

Electrical:	400a/120v/3ph
Parking:	70 striped spaces
Lease Rate:	\$15.00 PSF, NNN
2026 Estimated Operating Expenses:	• Taxes: \$3.27 PSF
	• Insurance: \$0.83 PSF
	• CAM & Mgmt Fee: \$2.54 PSF



14300-14306 W. 105th Street
Lenexa, Kansas



Jack Higgins
Senior Vice President
+1 816 556 1170
jack.higgins@colliers.com

Ed Elder
President
+1 816 556 1135
ed.elder@colliers.com

Colliers Kansas City
4900 Main Street, Suite 400
Kansas City, Missouri 64112
colliers.com/kansascity

