

# LEASE

# UP TO 11,880 SF FOR SUBLEASE @ \$2.00/SF IN BEVERLY HILLS



# 8671 WILSHIRE BLVD

# OVERVIEW

## LEASE INFO:

### Rent

\$2.00/SF FSG

### Size

4th FL: 4,222 SF  
5th FL: 6,936 SF  
7th FL: 722 SF

### Term

Through 4/3/2020  
Longer term available

### Parking

4th FL: 12 spaces @ 125/mo  
5th FL: 20 spaces @ 125/mo  
Additional parking available



## Please Contact Listing Agents

### Jackie Lubrano

Senior Director  
310-469-9376  
jackie@zacutogroup.com  
BRE #02024601

### Jake Zacuto

Managing Director  
310-469-9012  
jake@zacutogroup.com  
BRE #01377441

### Below market rate!

Three different suites available, up to 11,880 SF. Rare opportunity to occupy a modern creative office in the heart of Beverly Hills. Great floor plan with perimeter offices and open area, outdoor balconies, and polished concrete floors throughout.

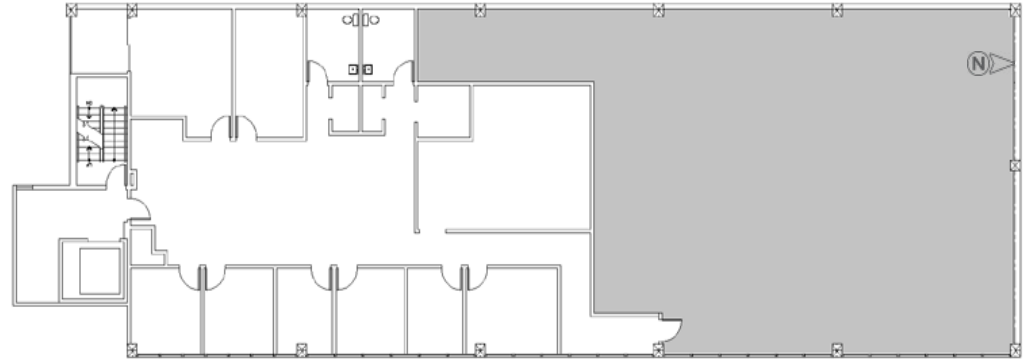
No warranty, express or implied, is made as to the accuracy of the information contained herein. This information is submitted subject to errors, omissions, change of price, rental or other conditions, withdrawal without notice. All parties who receive this material should not rely on it, but should use it as a starting point of analysis, and should independently confirm the accuracy of the information contained herein through a due diligence review of the books, records, files and documents that constitute reliable sources of the information described herein. Logos are for identification purposes only and may be trademarks of their respective companies.

All terms provided in "Lease Info" are approximate. Lessee to verify.

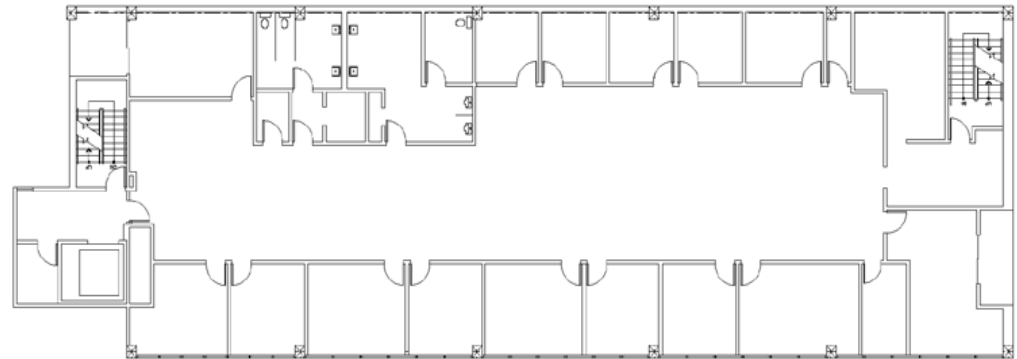
# DETAILS

- Ideal for creative companies, startups, production, media and more
- Idea paint throughout office
- Each suite has direct elevator access
- Polished concrete floors
- Amazing location in Beverly Hills, close to Beverly Center, and walking distance to Beverly Hills Triangle
- Private restrooms
- Longer term available direct with landlord

Entire 4th Floor  
4,222 SF | Headcount: 20 - 30



Entire 5th Floor  
6,936 SF | Headcount: 45 - 60



# PHOTOS



8671 WILSHIRE BLVD, STE 400 & 500, BEVERLY HILLS , CA 90211

# PHOTOS



8671 WILSHIRE BLVD, STE 400 & 500, BEVERLY HILLS , CA 90211

# AMAZING LOCATION

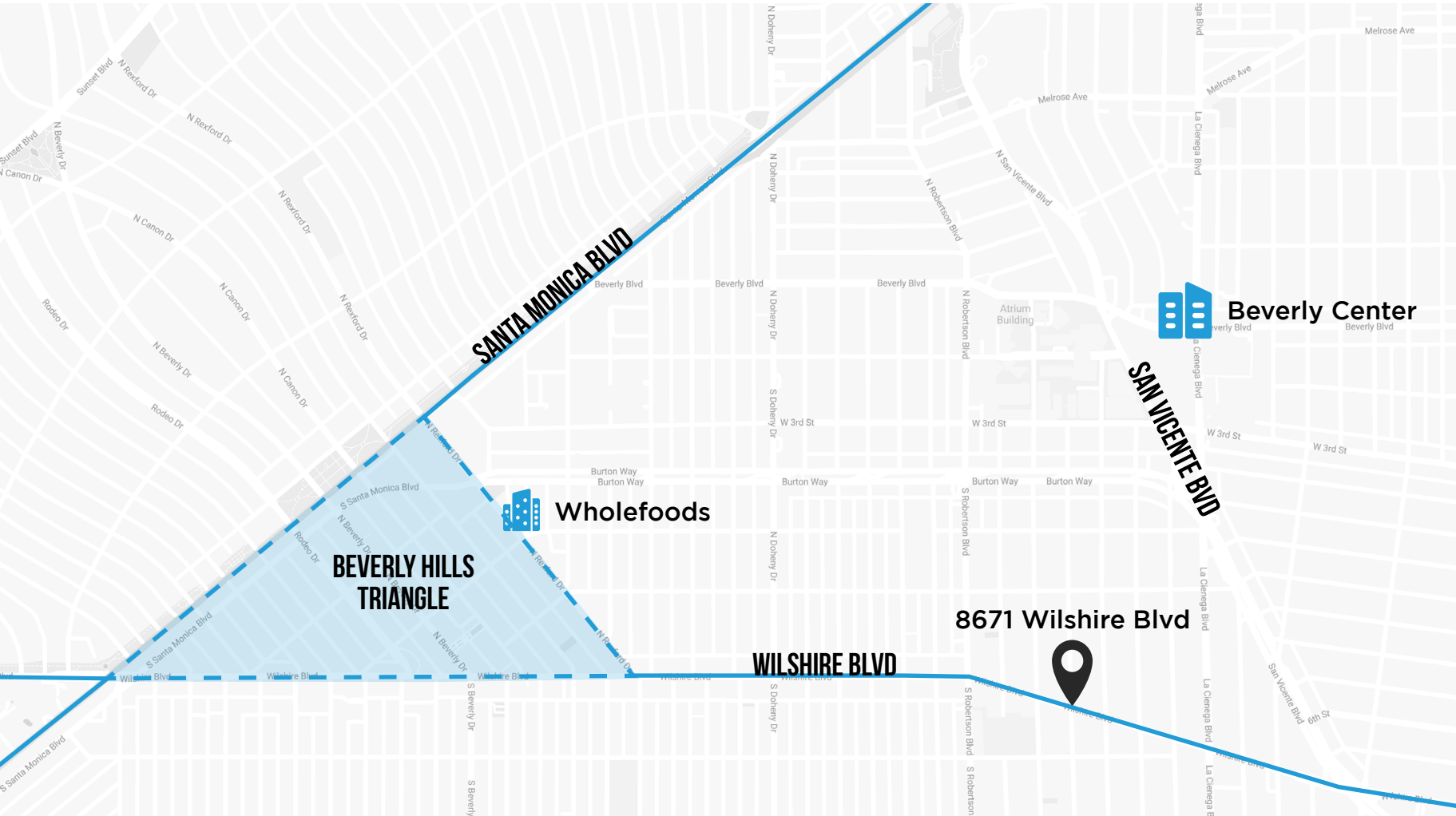
BEVERLY HILLS TRIANGLE

BEVERLY CENTER



8671 WILSHIRE BLVD, STE 400 & 500, BEVERLY HILLS , CA 90211

# AMAZING LOCATION



# THE TEAM

---



**Jake Zacuto**

Managing Director  
310-469-9012  
jake@zacutogroup.com  
BRE #01377441



**Andrew Sinasohn**

Senior Vice President  
310-469-9023  
andrew@zacutogroup.com  
BRE #01951740



**Jackie Lubrano**

Senior Director  
310-469-9376  
jackie@zacutogroup.com  
BRE #02024601



**Marc Vonderweidt**

Director  
424-255-1566  
marc@zacutogroup.com  
BRE #02036519



**Connor Sears**

Director  
310-469-9398  
connor@zacutogroup.com  
BRE #02010505



**Leor Binshtock**

Senior Vice President  
310-469-9014  
leor@zacutogroup.com  
BRE #01773798



**Richard Ramer**

Vice President  
310-720-2994  
richard@zacutogroup.com  
BRE #02053543



**Samira I. Nahid**

CRE Consultant  
310-469-9024  
samira@zacutogroup.com  
BRE #02027445



**Terrence Pallend**

Director  
310-469-9399  
terrence@zacutogroup.com  
BRE #01967150



**Sami Yags**

Marketing Director  
646-715-5881  
sami@zacutogroup.com



ELEVATE YOUR PERSPECTIVE

TENANT REPRESENTATION  
CORPORATE SERVICES  
INVESTOR ADVISORY



@zacutogroup

10250 Constellation Blvd  
Suite #2770  
Los Angeles  
CA 90067

zacutogroup.com | 310-469-9300