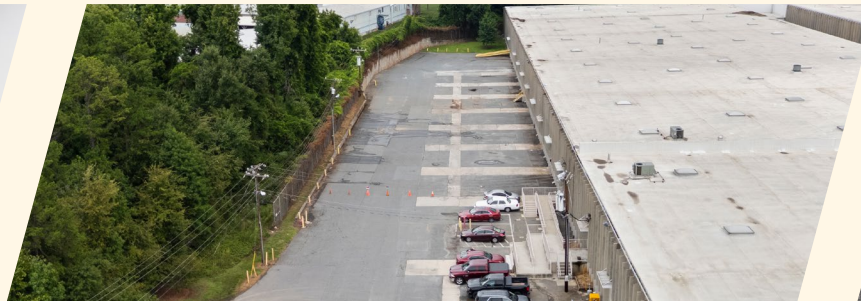
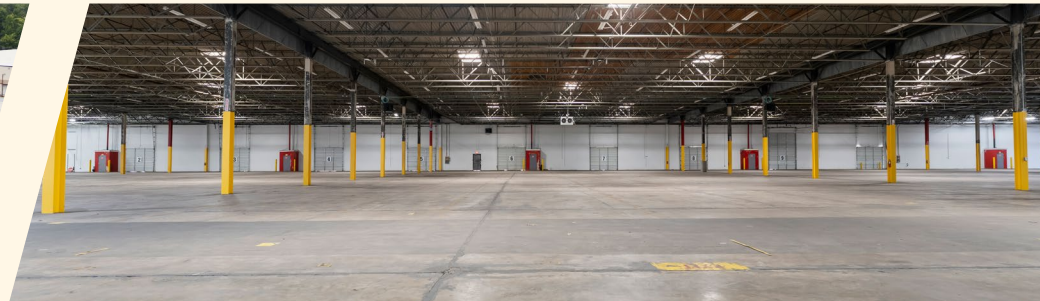


FOR LEASE

1001

Bond Street

40,000 SF – 101,218 SF Available 1001 BOND STREET | CHARLOTTE, NC 28208



BRADLEY DUNN
bdunn@trinity-partners.com
704.777.7003

THOMAS PASSENANT
tpassenant@trinity-partners.com
704.345.2185

Owned by

DRA
ADVISORS

Leased by

TRINITY
PARTNERS

40,000 SF – 101,218 SF Available

1,500 SF Office Area

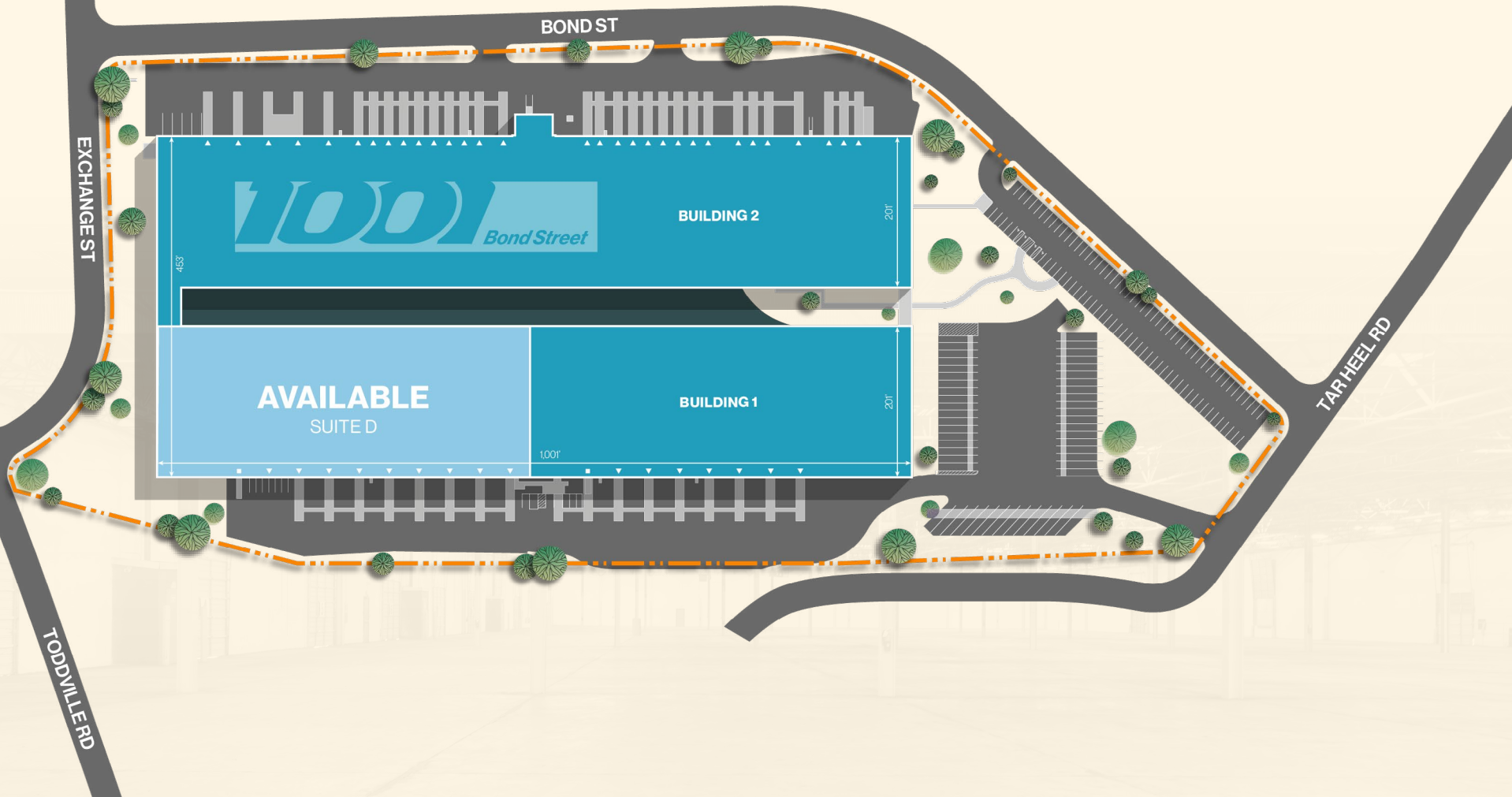
9 Dock Doors

1 Drive-In Door

21' Clear Height

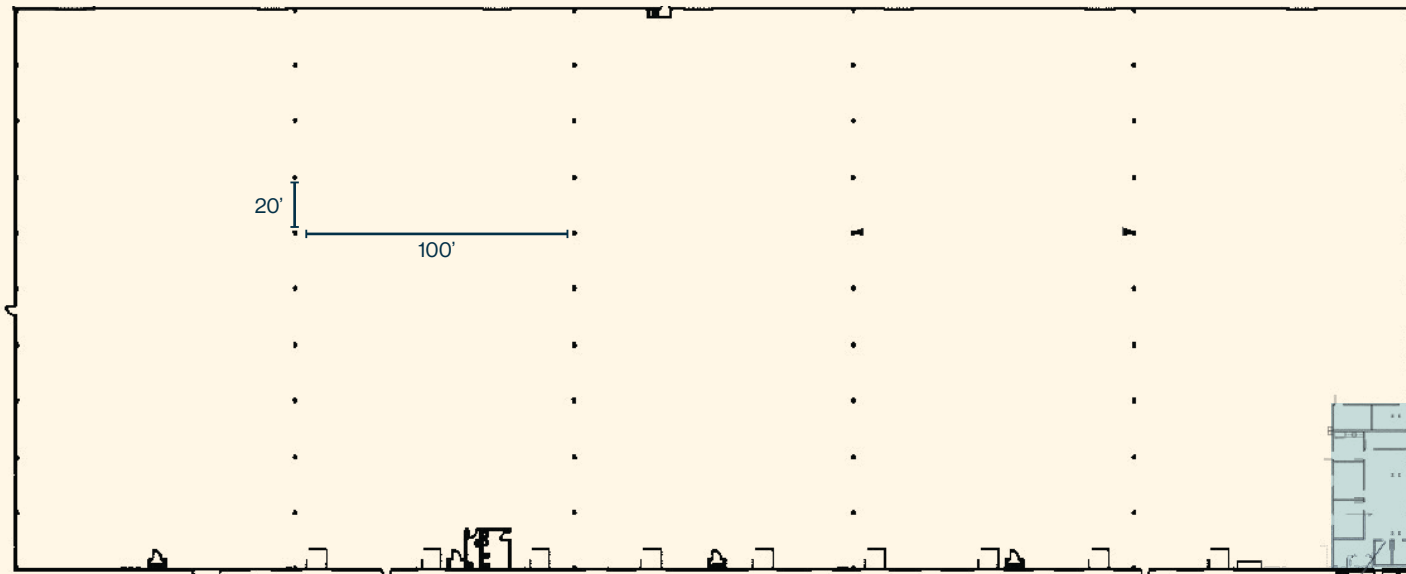
Dry Sprinkler System

LED

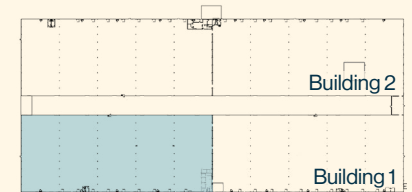


Suite D

40,000 SF – 101,218 SF Available



KEY PLAN



Office Area
1,500 SF

Contact

BRADLEY DUNN
bdunn@trinity-partners.com
704.777.7003

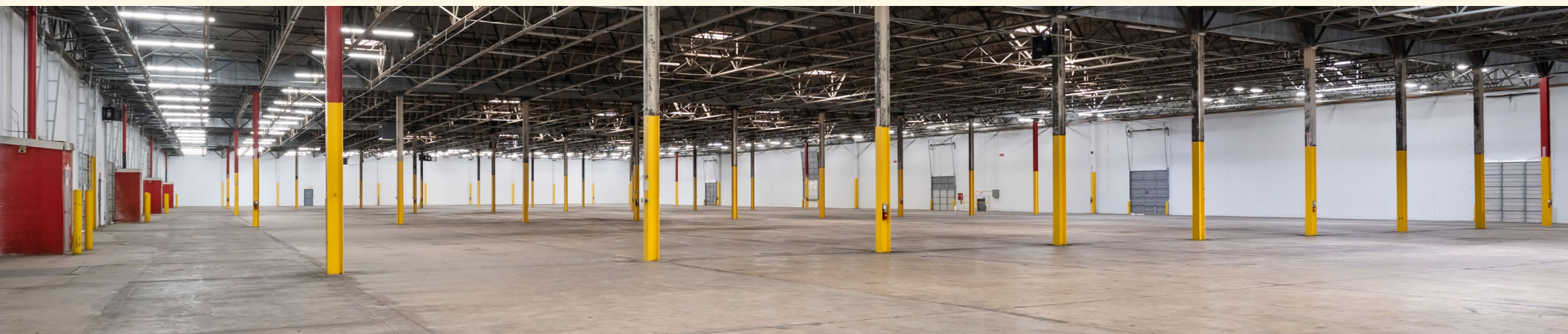
THOMAS PASSENANT
tpassenant@trinity-partners.com
704.245.2185

Owned by

DRA
ADVISORS

Leased by

TRINITY
PARTNERS



EXCEPTIONAL ACCESS

Strategically located with easy access to I-485, I-85, and I-77 in addition to both Norfolk Southern and CSX Intermodal facilities.



1001

Bond Street



BRADLEY DUNN
bdunn@trinity-partners.com
704.777.7003

THOMAS PASSENANT
tpassenant@trinity-partners.com
704.345.2185

Owned by

DRA
ADVISORS

Leased by

TRINITY
PARTNERS