

11687 NE GLISAN ST

Portland, OR 97220

FOR LEASE



RETAIL/OFFICE SPACE FOR LEASE

DETAILS

- Space available: ± 676 SF
- Lot size: ± 0.40 AC
- Lease rate: Call brokers for rate
- Zoning: CM1

FEATURES

- Retail space with off-street parking
- Visibility on NE Glisan St with ± 10,600 VPD
- Surrounding tenants include: Dept. of Human Services, Taco Bell, Auto Zone, and Harbor Freight



DEMOGRAPHICS

	1 MILE	3 MILES
Population	22,616	171,098
Households	9,203	66,429
Median Age	38.8	38.2
Median Household Income	\$64,843	\$72,885
Daytime Employees	11,544	65,361



10.30.2024

For more information or a property tour, please contact:

GREG NESTING

503.225.8440

GregN@norris-stevens.com

LUIS MARTIN DEL CAMPO

503.416.8422

LuisM@norris-stevens.com

Norris & Stevens

INVESTMENT REAL ESTATE SERVICES



Information contained herein has been obtained from others and considered to be reliable; however, a prospective purchaser or lessee is expected to verify all information to their own satisfaction.

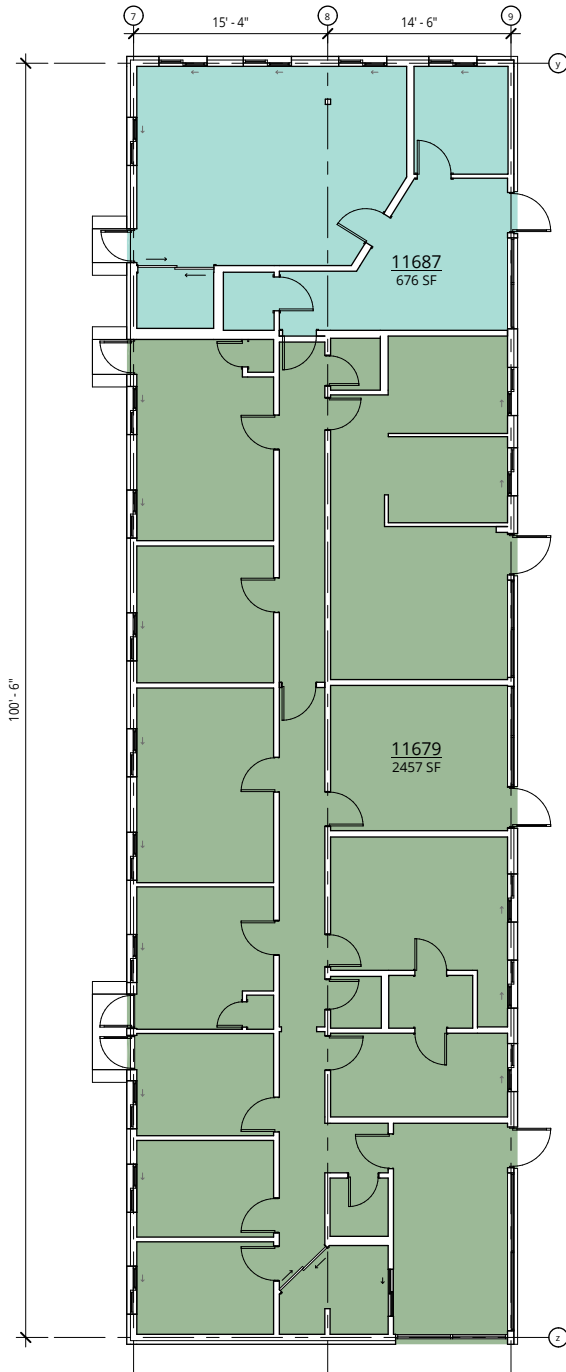
900 SW 5th Avenue • 17th Floor • Portland, OR 97204
503.223.3171 • norris-stevens.com

11687 NE GLISAN ST

Portland, OR 97220

FOR LEASE

FLOOR PLAN + PHOTOS



For more information or a property tour, please contact:

GREG NESTING

503.225.8440

GregN@norris-stevens.com

LUIS MARTIN DEL CAMPO

503.416.8422

LuisM@norris-stevens.com

Norris & Stevens

INVESTMENT REAL ESTATE SERVICES



Information contained herein has been obtained from others and considered to be reliable; however, a prospective purchaser or lessee is expected to verify all information to their own satisfaction.

900 SW 5th Avenue • 17th Floor • Portland, OR 97204

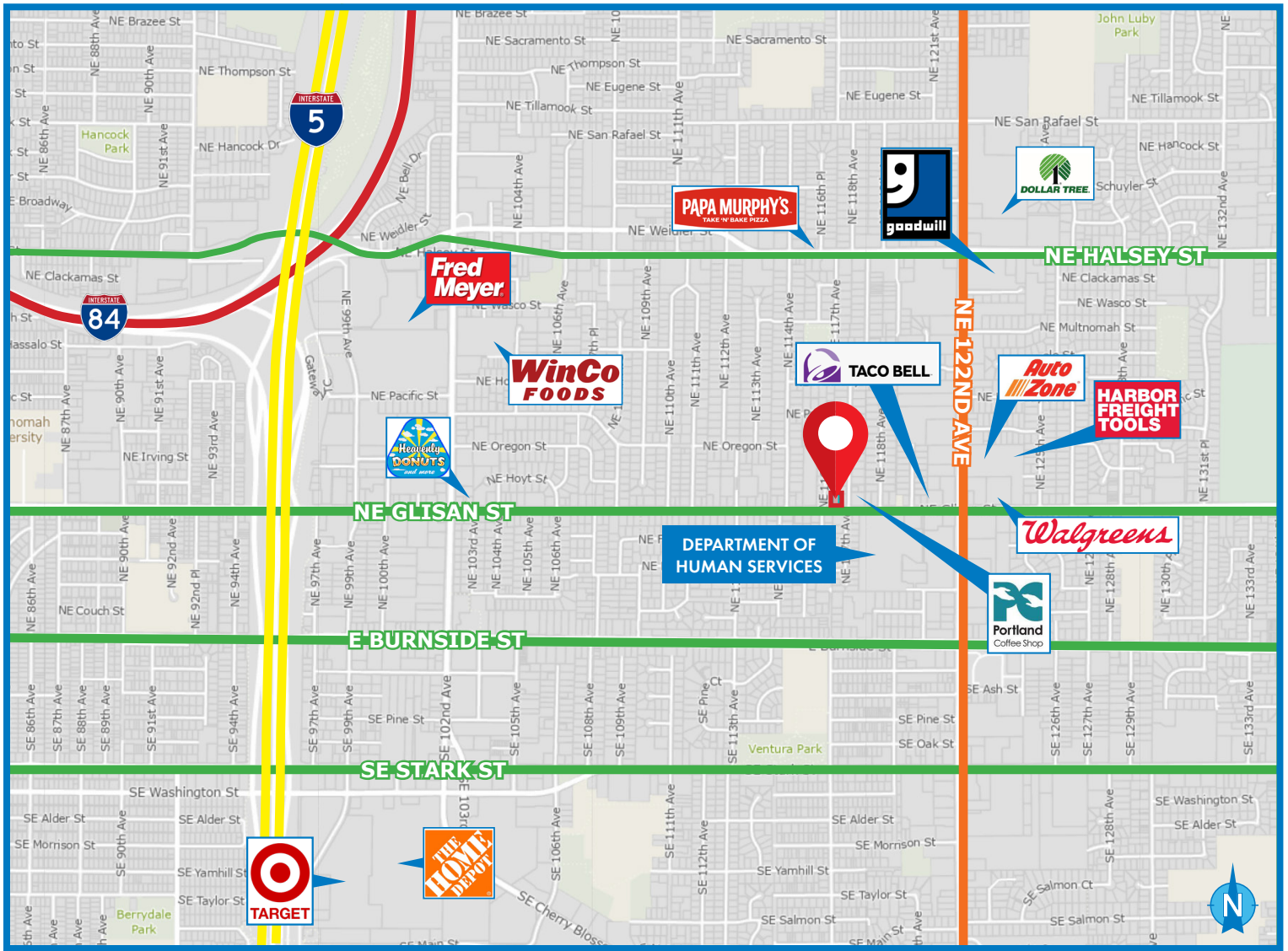
503.223.3171 • norris-stevens.com

11687 NE GLISAN ST

Portland, OR 97220

FOR LEASE

MAP



WALK SCORE
80

BIKE SCORE
97

For more information or a property tour, please contact:

GREG NESTING

503.225.8440

GregN@norris-stevens.com

LUIS MARTIN DEL CAMPO

503.416.8422

LuisM@norris-stevens.com

Norris & Stevens

INVESTMENT REAL ESTATE SERVICES



Information contained herein has been obtained from others and considered to be reliable; however, a prospective purchaser or lessee is expected to verify all information to their own satisfaction.

900 SW 5th Avenue • 17th Floor • Portland, OR 97204

503.223.3171 • norris-stevens.com