



SOUTHPORT LOGISTICS CENTER

2975 RAMCO ST

WEST SACRAMENTO SUBMARKET
±125,664 SF AVAILABLE FOR LEASE

MIKE ZIMMERMAN, SIOR
Senior Vice President

P: +1 916 446 8702
mike.zimmerman1@cbre.com
LIC. 01514055

RYAN DEANGELIS, SIOR
Executive Vice President

P: +1 916 871 3714
ryan.deangelis@cbre.com
LIC. 01280330

SEAN MEROLD, SIOR
Senior Vice President

P: +1 916 446 8701
sean.merold@cbre.com
LIC. 01803204

JIMMY LANDIS
Senior Associate

P: +1 916 446 8280
jimmy.landis@cbre.com
LIC. 02130311

CBRE

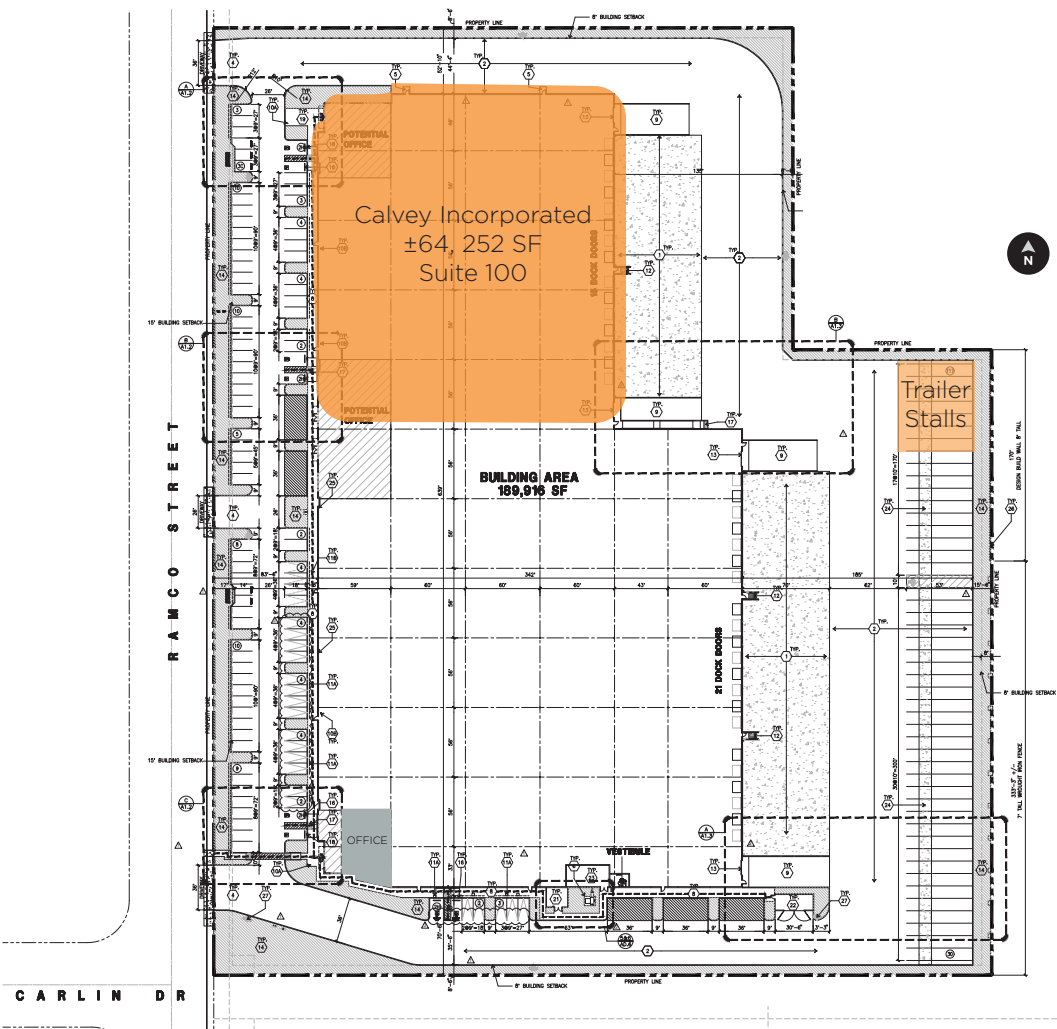
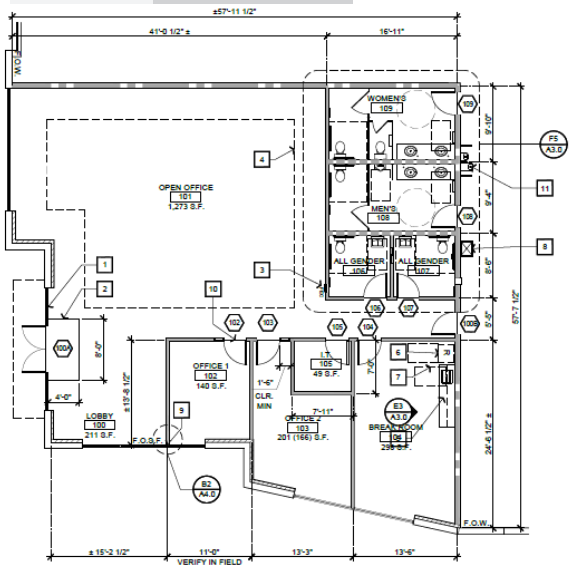


SOUTHPORT LOGISTICS CENTER | WEST SACRAMENTO, CA

SITE

BUILDING SIZE:	±125,664 SF
PARCEL SIZE:	10 ACRES
DIMENSIONS:	±342' D X 639' W
CLEAR HEIGHT:	±32'
COLUMN SPACING:	60' x 56' TYP
GRADE LEVEL DOORS:	2 - 12' X 14'
DOCK DOORS:	21 Positions 5 Positions equipped with pit levelers
ELECTRICAL:	277/480 AMPS
FIRE SUPPRESSION:	ESFR
TRAILER PARKING:	40 STALLS
TRUCK COURT:	185'
AUTO PARKING:	123
OFFICE:	±2,497 SF

OFFICE



SOUTHPORT LOGISTICS CENTER | WEST SACRAMENTO, CA



OVERNIGHT COURIER DISTANCES

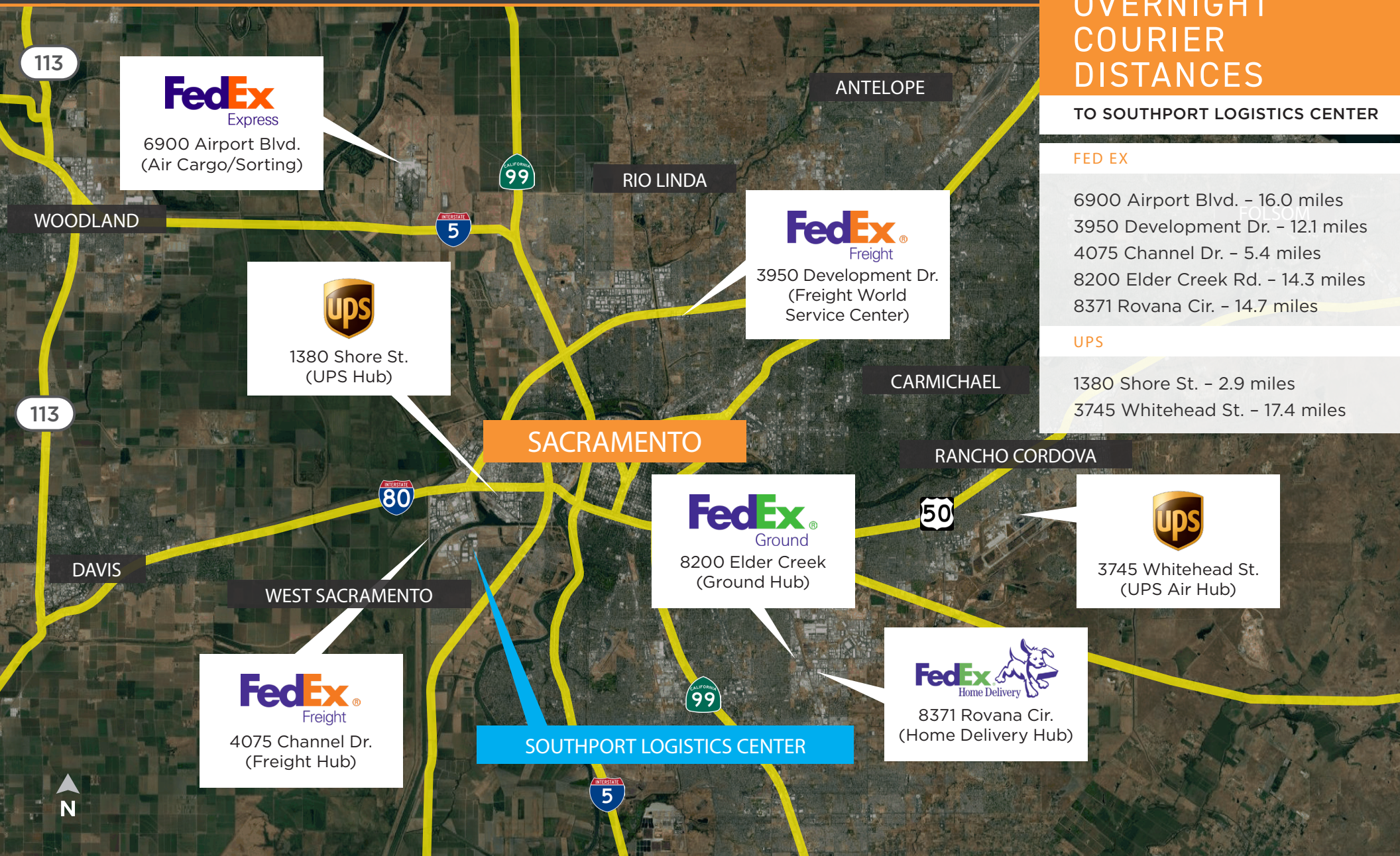
TO SOUTHPORT LOGISTICS CENTER

FED EX

6900 Airport Blvd. – 16.0 miles
3950 Development Dr. – 12.1 miles
4075 Channel Dr. – 5.4 miles
8200 Elder Creek Rd. – 14.3 miles
8371 Rovana Cir. – 14.7 miles

UPS

1380 Shore St. – 2.9 miles
3745 Whitehead St. – 17.4 miles



LOCATION

M A P

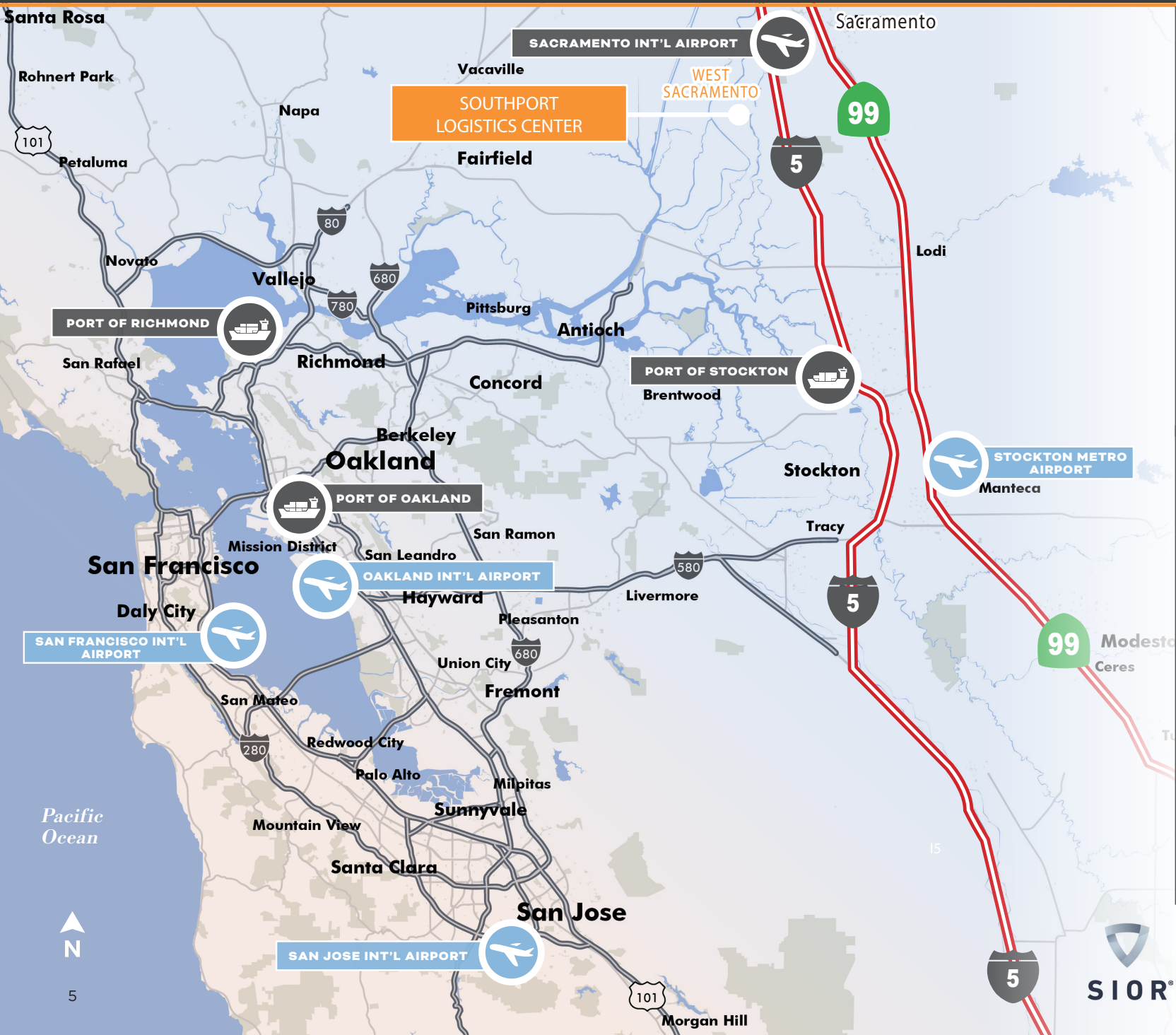
SACRAMENTO AND BAY AREA ACCESS

- Immediate access to I-5, I-80, Highways 99 & 50
- Convenient access to Sacramento International Airport and Downtown Sacramento
- Direct access to the Greater Bay Area via I-80

PORTS & TRANSPORTATION

MILES

Sacramento Airport	19
Port of Stockton	54
Stockton Airport	57
Port of Richmond	78
Port of Oakland	95
Oakland Airport	94
San Francisco Int'l Airport	101
San Jose Int'l Airport	114



CORPORATE NEIGHBORS



target **Nugget MARKETS** *Walgreens*
S.P. RICHARDS CO. **Amerimax**
Johnson **INTERPAC** **DA LOGISTICS**
A FAMILY COMPANY TECHNOLOGIES
AQUAFIL *TrueValue* **RITE AID**
Global

SACRAMENTO INTERNATIONAL AIRPORT
Walmart
amazon
METRO AIR PARK

Raley's **NTT** Global Data Centers
aramark **Budweiser**
AmerisourceBergen **CINTAS** READY FOR THE WORKDAY
NAPA **DIMARE FRESH** **Shamrock Foods** DELIVERING SATISFACTION
HEARTH & HOME *Coca-Cola* **Core-Mark**
Technologies

BAYER **Cummins** **STATE OF CA PRINTING**
La Mesa RV EXPERIENCE LIFE
TONY'S **HercRentals**
FINGER FOODS

FedEx **BLUE DIAMOND ALMONDS**
WCP SOLUTIONS
Goodman **GENERAL PRODUCE COMPANY**
SALES AND DISTRIBUTION

SACRAMENTO CAPITOL BUILDING
Golden1 Credit Union CENTER

Ply Gem **PITCO FOODS** **GOLD DOMINION FREIGHT LINE**
PROUDLY SERVING SINCE 1982
Golden1 Credit Union CENTER **HD SUPPLY**
NOR-CAL BEVERAGE CO.
BIMBO Bakeries USA **Core-Mark** **BOGLE VINEYARDS**

HunterDouglas **THE STANDARD REGISTER CO.**
CROWN **GRAINGER** FOR THE ONES WHO GET IT DONE
McKesson **FedEx**
FritoLay **UNITED STATES POSTAL SERVICE** **goodwill**

ups **FRC FARMERS' RICE COOPERATIVE**
TOYOTA MATERIAL HANDLING **TMH NORTHERN CALIFORNIA**
INTERNATIONAL PAPER

SOUTHPORT LOGISTICS CENTER



WHY SACRAMENTO?

- #3 FOR MILLENNIAL MIGRATION
(6,680 MILLENNIALS GAINED)
- 53% OF POPULATION IN GREATER SACRAMENTO
HAS STEM DEGREES
- #6 OF THE TOP SMALL TECH MARKETS
IN NORTH AMERICA
- #10 OVERALL IN NORTH AMERICA FOR
ENGINEERING-RELATED TECHNOLOGY
- #11 IN THE U.S. FOR STARTUPS
AND ENTREPRENEURS
- #1 CITY IN CALIFORNIA FOR POPULATION GROWTH
- TOP 10 TECH MARKETS TO WATCH



1,821

COMPANIES WHO
MANUFACTURE
IN SACRAMENTO

4.49%

POPULATION GROWTH RATE FROM
2020-2025

10.0%

OF EMPLOYEES IN PROFESSIONAL, SCIENTIFIC
AND TECHNICAL SERVICES

14.6%

OF EMPLOYEES ARE IN HEALTHCARE
AND SOCIAL ASSISTANCE

DEMOGRAPHICS



67,794

RESIDENTS WITHIN 5 MILES



\$101,317

AVERAGE HOUSEHOLD INCOME



43.6%

COLLEGE GRADUATES



29.5%

OF MILLENNIALS IN AREA



35-39

MEDIAN AGE OF POPULATION



17,999

EMPLOYEES WITHIN 5 MILES



179 NONSTOP FLIGHTS DEPART
FROM SACRAMENTO
INTERNATIONAL AIRPORT

- » SACRAMENTO INTERNATIONAL AIRPORT
15.9 MILES AWAY | 22 MINUTES
- » MCCLELLAN AIRFIELD
18.4 MILES AWAY | 27 MINUTES
- » RIO LINDA AIRPORT
16.5 MILES AWAY | 24 MINUTES



BART EXPANSION INTO
SACRAMENTO

- » BART & Capitol Corridor partnership
- » First Phase in 2021
- » Second Phase in 2024
- » Final Phase in 2028



LINK TO YOUR WEST
COAST SUPPLY CHAIN

- » PORT OF WEST SACRAMENTO
3.0 MILES | 8 MINUTES
- » PORT OF STOCKTON
53.9 MILES | 60 MINUTES
- » 4th Busiest Amtrak Route in the Nation
- » 1.7 Million Greater Sacramento Amtrak
Riders in 2018

MIKE ZIMMERMAN, SIOR
Senior Vice President
P: +1 916 446 8702
mike.zimmerman1@cbre.com
LIC. 01514055

SEAN MEROLD, SIOR
Senior Vice President
P: +1 916 446 8701
sean.merold@cbre.com
LIC. 01803204

RYAN DEANGELIS, SIOR
Executive Vice President
P: +1 916 871 3714
ryan.deangelis@cbre.com
LIC. 01280330

JIMMY LANDIS
Senior Associate
P: +1 916 446 8280
jimmy.landis@cbre.com
LIC. 02130311

