

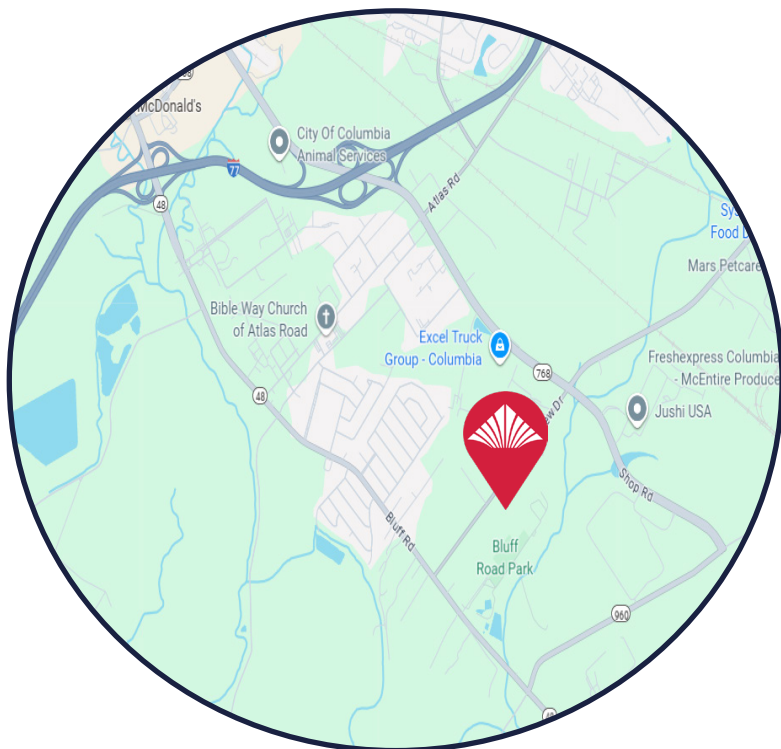
**FOR SALE**



**1332 Pineview Drive**  
Columbia, SC 29209

**±12 Acres for Sale**

- Traffic Count on Shop Rd: ~25,700 VPD
- 629' Frontage
- Zoning: M-1 Industrial & Commercial
- 12" Water Line & 8" Sewer Line
- TMS #: R16100-02-01



**Sales Price: \$978,000**

**CONTACT:**

George McCutchen, CCIM, SIOR | [gmcutchen@wilsonkibler.com](mailto:gmcutchen@wilsonkibler.com) | 803.255.8603  
James Rogers SIOR | [james.rogers@wilsonkibler.com](mailto:james.rogers@wilsonkibler.com) | 803.255.8621

**Wilson Kibler**  
COMMERCIAL REAL ESTATE



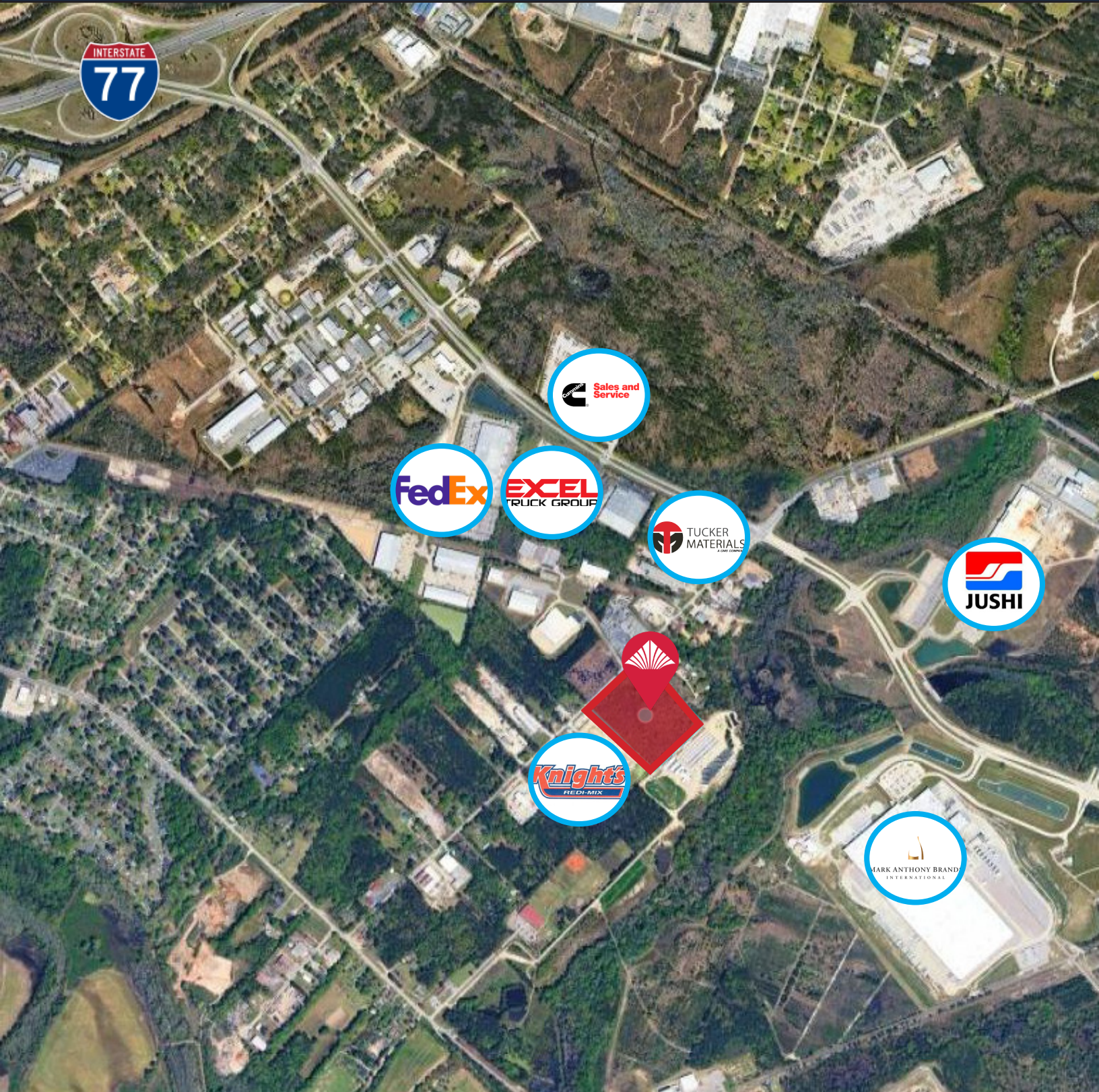
The information contained herein has been obtained from sources we believe to be reliable; however, Wilson Kibler has not conducted any investigation regarding these matters and makes no warranty or representation whatsoever regarding the accuracy or completeness of the information provided.





# 1332 Pineview Drive

Columbia, SC 29209



**CONTACT:**

George McCutchen, CCIM, SIOR | [gmcutchen@wilsonkibler.com](mailto:gmcutchen@wilsonkibler.com) | 803.255.8603

James Rogers SIOR | [james.rogers@wilsonkibler.com](mailto:james.rogers@wilsonkibler.com) | 803.255.8621

The information contained herein has been obtained from sources we believe to be reliable; however, Wilson Kibler has not conducted any investigation regarding these matters and makes no warranty or representation whatsoever regarding the accuracy or completeness of the information provided.

**Wilson Kibler**  
COMMERCIAL REAL ESTATE







# 1332 Pineview Drive

Columbia, SC 29209



1. Atlas Ct Industrial Park
2. Jushi USA
3. Thermal Engineering Corp.
4. American Spiralweld
5. Columbia Industrial Park
6. Insurance Auto Auctions
7. Fed-Ex
8. McEntire Produce
9. Mars Petcare
10. Sysco Columbia
11. Rinker Materials
12. Southern Wine and Spirits

#### CONTACT:

George McCutchen, CCIM, SIOR | [gmcutchen@wilsonkibler.com](mailto:gmcutchen@wilsonkibler.com) | 803.255.8603

James Rogers SIOR | [james.rogers@wilsonkibler.com](mailto:james.rogers@wilsonkibler.com) | 803.255.8621

The information contained herein has been obtained from sources we believe to be reliable; however, Wilson Kibler has not conducted any investigation regarding these matters and makes no warranty or representation whatsoever regarding the accuracy or completeness of the information provided.

**Wilson Kibler**  
COMMERCIAL REAL ESTATE

