

# INDUSTRIAL SPACE

Approx 9,725 sf  
For Sub-Lease

663 Lawrence St  
Lowell, MA



S  
P  
A  
C  
E  
  
F  
O  
R  
  
S  
U  
B  
  
L  
E  
A  
S  
E

## AVAILABLE (APPROX SF):

9,725 sf

## USES:

Industrial/Flex

## OFFERED FOR SUB-LEASE:

\$9/sf (includes all utilities)

## NEARBY TENANTS:

Boomer Baseball, Faceables Brick and Stone, Umaco, Wiesic Machine Inc, O'Reily Auto Parts, Graeff & Pyles, Dollar Tree.

## LOCATION:

663 Lawrence St Lowell MA is located minutes from the Lowell Connector and I-495.

## SUMMARY:

Excellent value! Approximately 9,725 square feet of industrial/flex space available for sub-lease in Lowell. Features ample parking and loading dock access in a historic mill building. Located minutes from the Lowell Connector and I-495, Call for more information!

The information contained herein has been obtained through sources deemed reliable by JMJ Commercial Realty, Inc., but cannot be guaranteed for its accuracy. We recommend to the Tenant that any information, which is of special interest, should be obtained through independent verification.

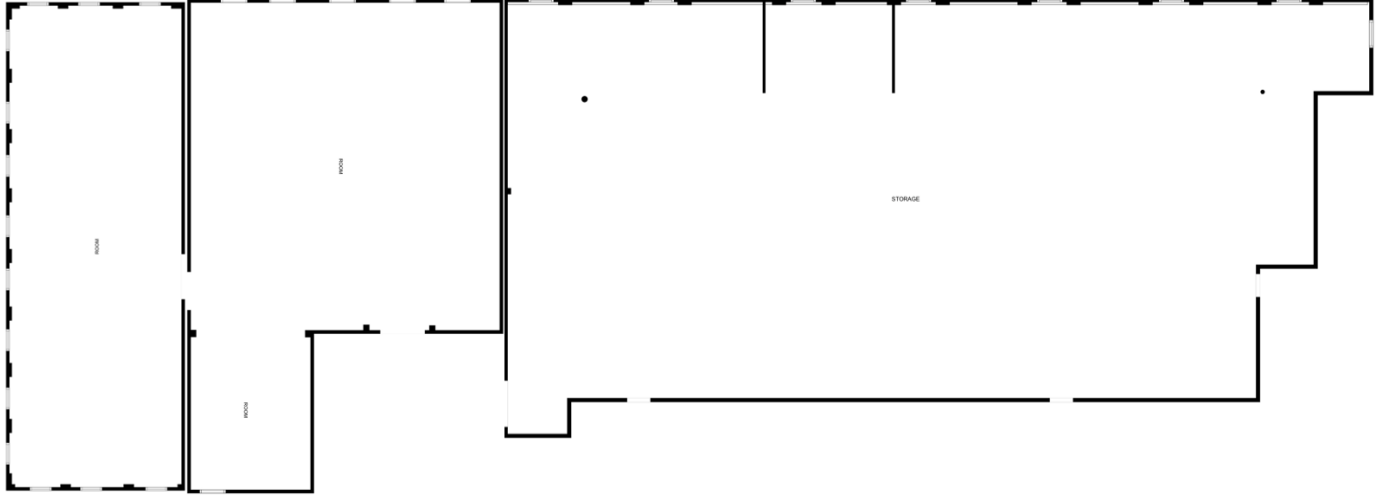


**JMJ Commercial Realty**  
935 Great Plain Avenue #261  
Needham, MA 02492  
[www.jmj-cre.com](http://www.jmj-cre.com)

**Adam Schertzer**  
Advisor  
781-244-3061  
[adam@jmj-cre.com](mailto:adam@jmj-cre.com)

Approx 9,725 sf Industrial Space - 663 Lawrence St , Lowell, MA

## FLOOR PLAN



The information contained herein has been obtained through sources deemed reliable by JMJ Commercial Realty, Inc., but cannot be guaranteed for its accuracy. We recommend to the Tenant that any information, which is of special interest, should be obtained through independent verification.



**JMJ Commercial Realty**  
935 Great Plain Avenue #261  
Needham, MA 02492  
[www.jmj-cre.com](http://www.jmj-cre.com)

**Adam Schertzer**  
Advisor  
781-244-3061  
[adam@jmj-cre.com](mailto:adam@jmj-cre.com)