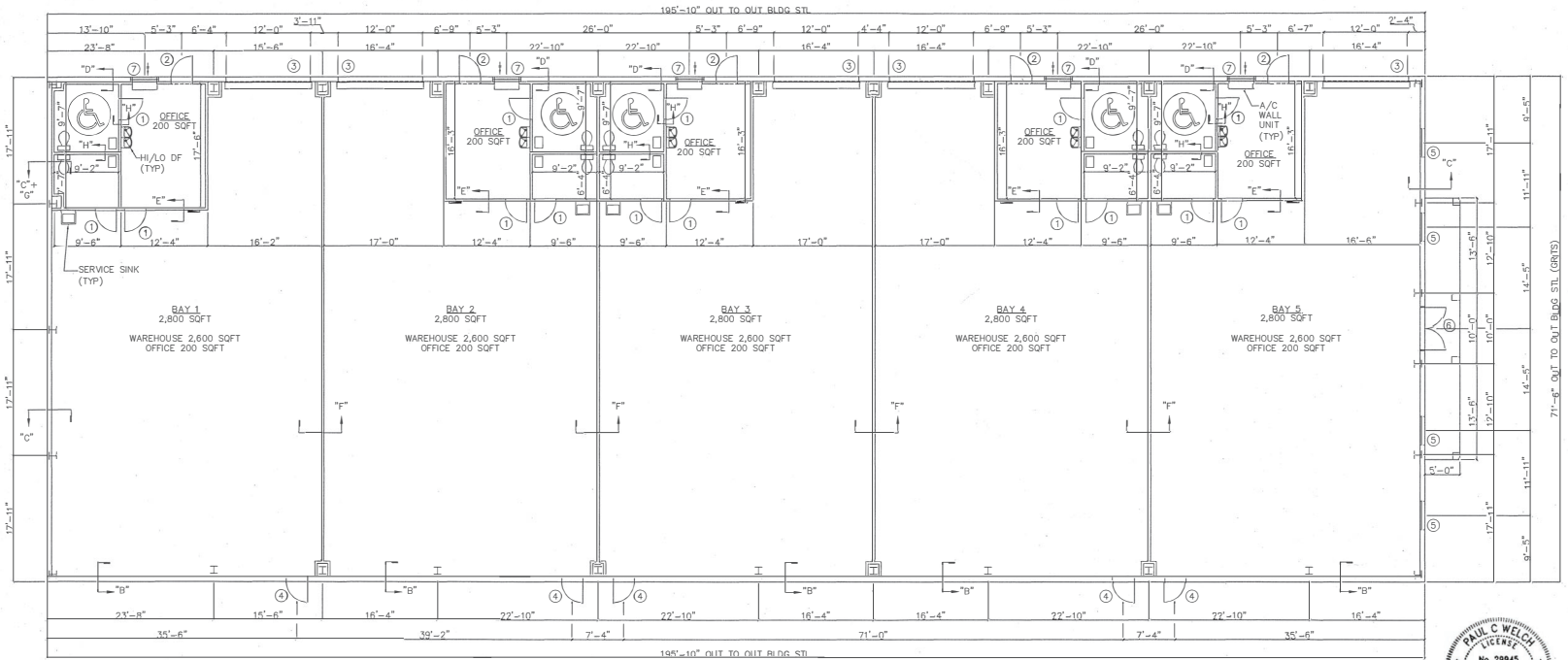


CEILING FRAMING PLAN 1/8" = 1'-0"
TYPICAL ALL UNITS (BAY 4 & 2 REVERSED)



DOOR / WINDOW SCHEDULE

- 1 3/8" SC WD W/CLOSER & HC HDWRE/LOCK
- 2 3/8" STOREFRONT IMPACT
- 3 12"14" ROLL UP
- 4 3/8" HTML
- 5 48" x 60" STOREFRONT WINDOW
- 6 3/8" DBL. STOREFRONT IMPACT
- 7 42" x 48" STOREFRONT WINDOW

TABULATIONS	
WAREHOUSE	13000 SQFT
OFFICE	1,000 SQFT
TOTAL	14,000 SQFT

FLOOR PLAN

1/8" = 1'-0"

Reviewed for Code Compliance
 Permit Number: 23-34294
 Discipline: MECHANICAL
 Approved By: hglass
 Approval Date: 08/29/2023



City of Port St. Lucie
 Project No. P22-254

PAUL WELCH INC.
 MECHANICAL ELECTRICAL CIVIL ENGINEERING
 1984 S.W. BILTMORE ST. SUITE #114
 PORT ST. LUCIE, FL 34984
 PHONE (772) 765-8688 E-MAIL: PWELCH@PCWELCH.COM
 PAUL WELCH, P.E. FLA REG NO. 29945

RESERVE PARK WAREHOUSE
 NW RESERVE PARK TRACE
 PORT ST LUCIE, FL



Mech
 M-2-4