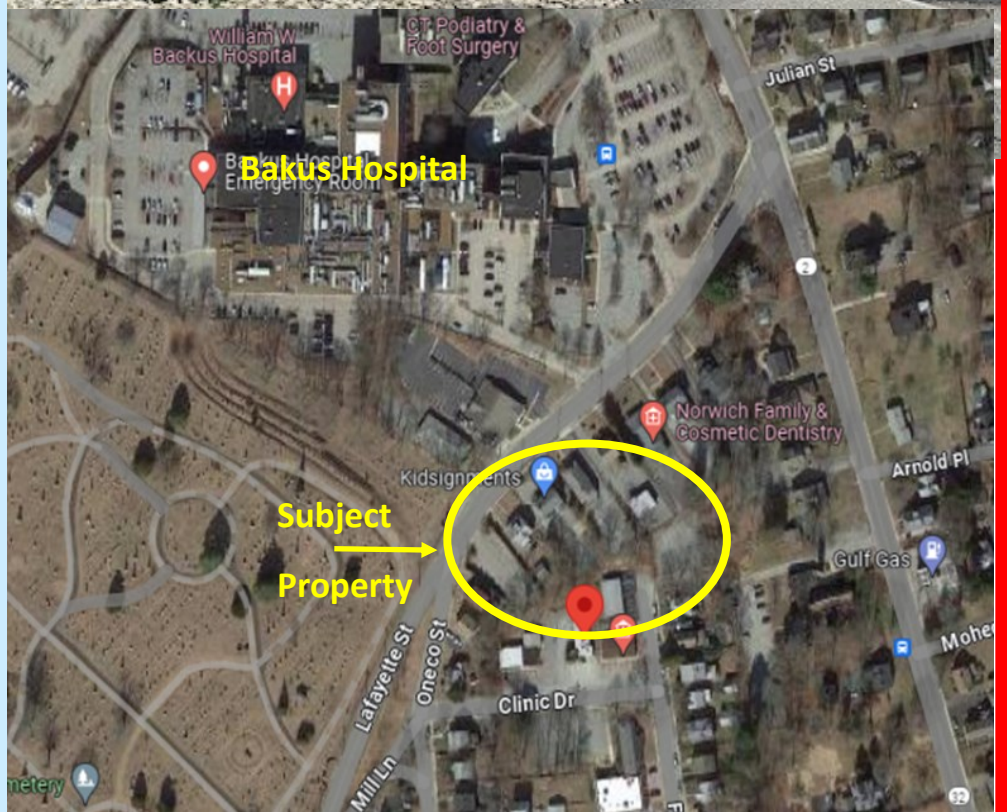


5 Clinic Drive, Norwich 1,572SF on .29 Acre in NC Zone



FOR SALE
\$189,000

- ⇒ 1,572 SF
- ⇒ Acres: 0.29
- ⇒ AC & Oil Heat
- ⇒ Public Water & Sewer
- ⇒ Frontage: 76Ft.
- ⇒ Zone: NC
- ⇒ Taxes: \$7,556
- ⇒ Traffic Count: 5,100
- ⇒ Year Built: 1962
- ⇒ .3 miles to Backus Hospital
- ⇒ Suitable for: Professional, Business, or Medical Offices. Cultural, Art, Museum. Customer Service, Day care, Nursing Home, Rehab Facility



LYMAN

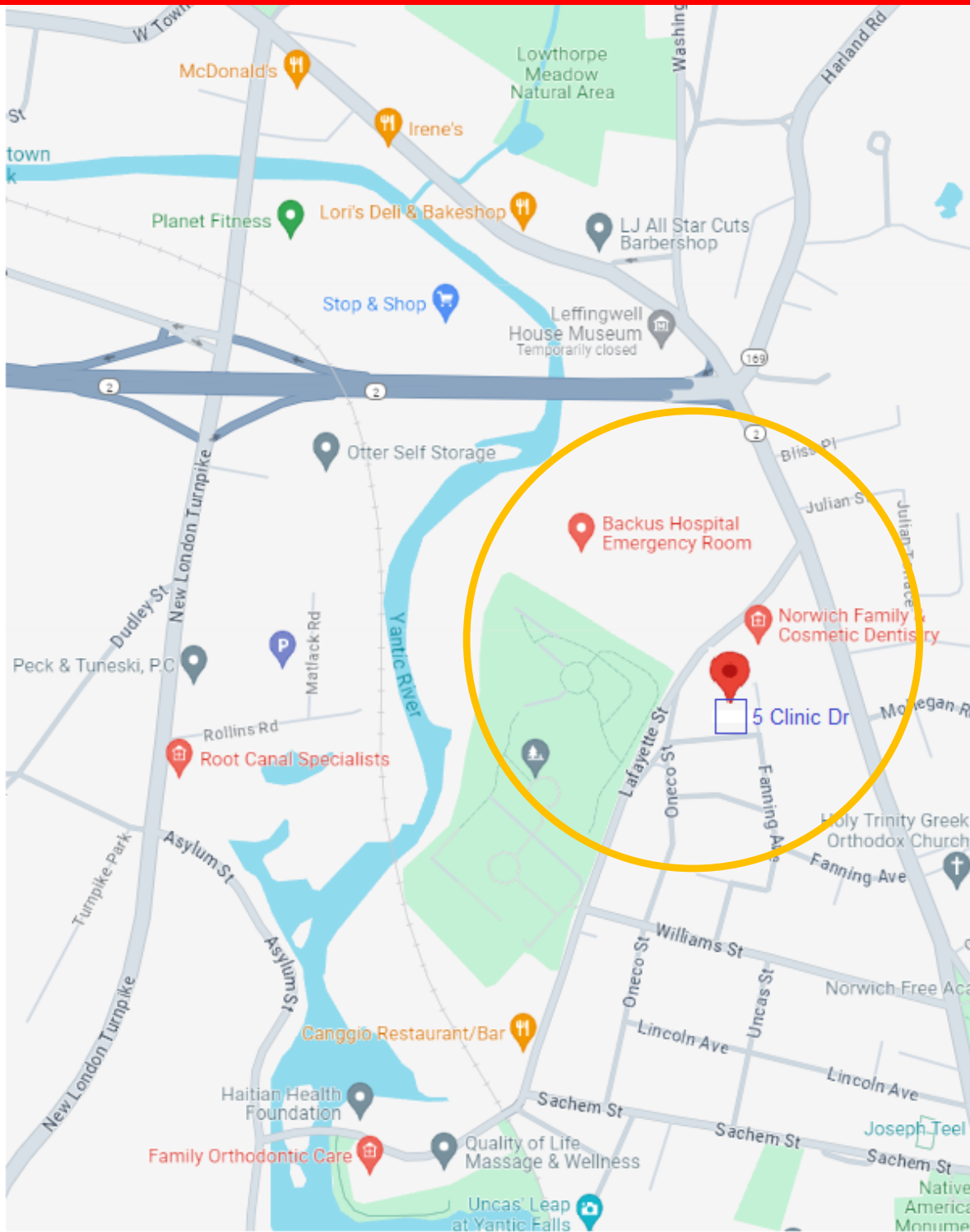
REAL ESTATE BROKERAGE & DEVELOPMENT

www.LymanRE.com

RON LYMAN

Main Office:
1160 Boston Post Rd.
Westbrook, CT 06498
Mailing Address:
73 Second Ave.
Westbrook, CT 06498
860-887-5000 Office
ronl@lymanre.com

Area Map



Demographics	1 MILE	3 MILES	5 MILES
Total Population	5,924	38,633	51,080
Total Households	2,477	15,755	20,689
Average Household Income	\$88,629	\$80,379	\$84,394

All information stated is from sources deemed reliable and is submitted subject to errors, omissions, changes of other terms and conditions, prior sales, financing or withdrawal without notice. Buyer/Tenant agents will be eligible for a portion of commission only if they have an existing signed representation.

