

PLANO MEDICAL OFFICE BUILDING III

4001 W. 15th Street Plano, TX 75093

Medical Office For Lease

2,537 - 4,774 SF



Leasing Information:
214.461.2388

Lincoln

Banks Newton **Douglas Maclay** **Elizabeth Madden**
214.461.2388 214.461.2371 214.461.2366
bnewton@lpc.com dmaclay@lpc.com emadden@lpc.com

8140 Walnut Hill Lane
Suite 700
Dallas, TX 75231

www.lpc.com

PLANO MEDICAL OFFICE BUILDING III

4001 W. 15th Street Plano, TX 75093



Office Medical For Lease

2,537 - 4,774 SF



Property Highlights

- Move-in Ready Suites
- Ample Parking
- Strong Institutional Ownership
- Generous Tenant Improvement Allowances Available

Location Overview

Plano Medical Office Building III is a Class A MOB with Institutional ownership that is connected to the Campus of Medical City - Plano via skybridge. This four story, 96,000 RSF, MOB is located on the NWC of W. 15th Street and Coit Road in the heart of Plano, Texas. The building has several move in ready spaces for different specialty size requirements.

Availabilities	SF
Suite 375	2,643 SF
Suite 465	4,774 SF
Suite 490	2,537 SF

Banks Newton

214.461.2388
bnewton@lpc.com

Douglas Maclay

214.461.2371
dmaclay@lpc.com

Elizabeth Madden

214.461.2366
emadden@lpc.com

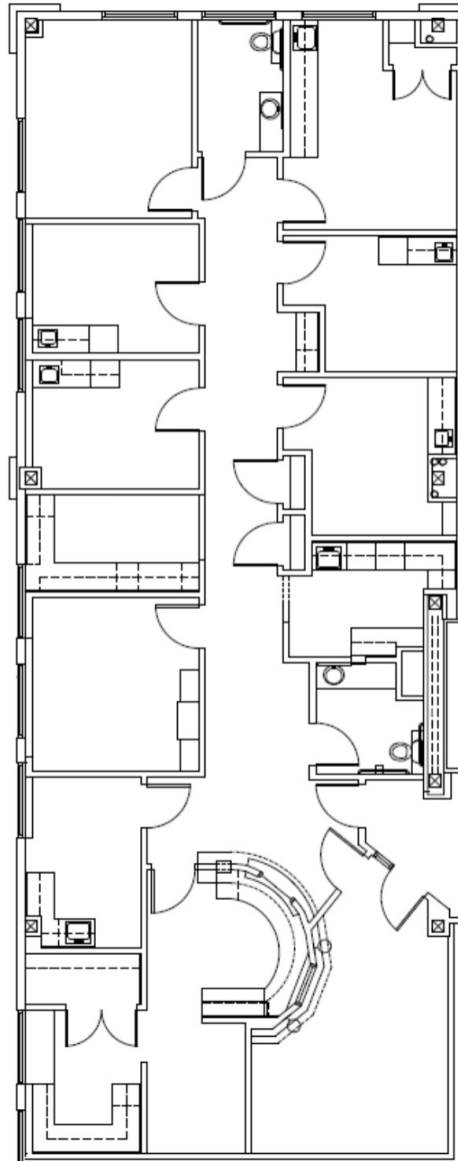
Lincoln

PLANO MEDICAL OFFICE BUILDING III

4001 W. 15th Street Plano, TX 75093

Suite 375

2,643 SF



Suite

Suite 375

Size

2,643 SF

Banks Newton

214.461.2388
bnewton@lpc.com

Douglas Maclay

214.461.2371
dmaclay@lpc.com

Elizabeth Madden

214.461.2366
emadden@lpc.com

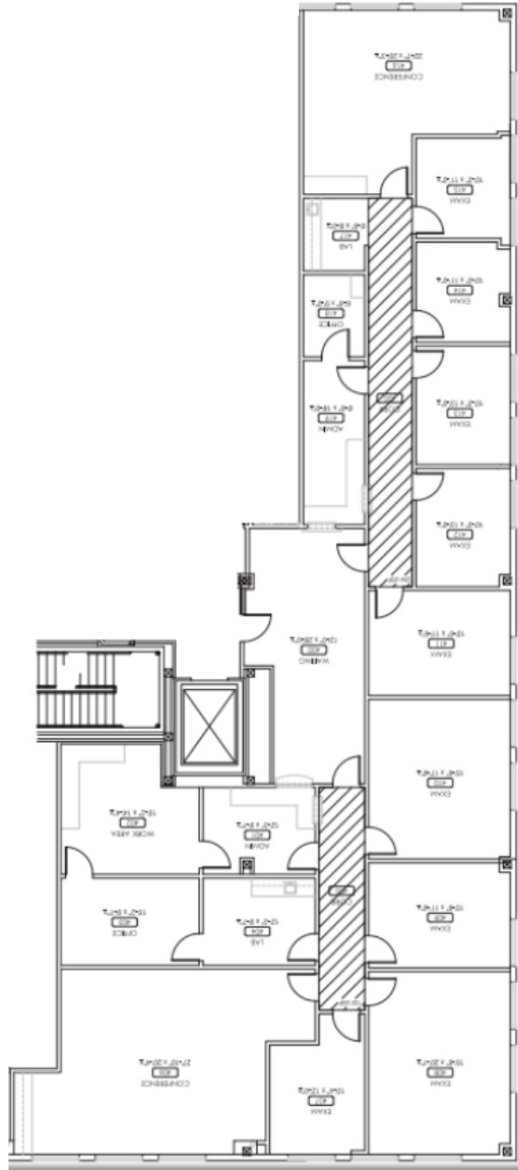
Lincoln

PLANO MEDICAL OFFICE BUILDING III

4001 W. 15th Street Plano, TX 75093

Suite 465

4,774 SF



Suite

Suite 465

Size

4,774 SF

Banks Newton

214.461.2388
bnewton@lpc.com

Douglas Maclay

214.461.2371
dmaclay@lpc.com

Elizabeth Madden

214.461.2366
emadden@lpc.com

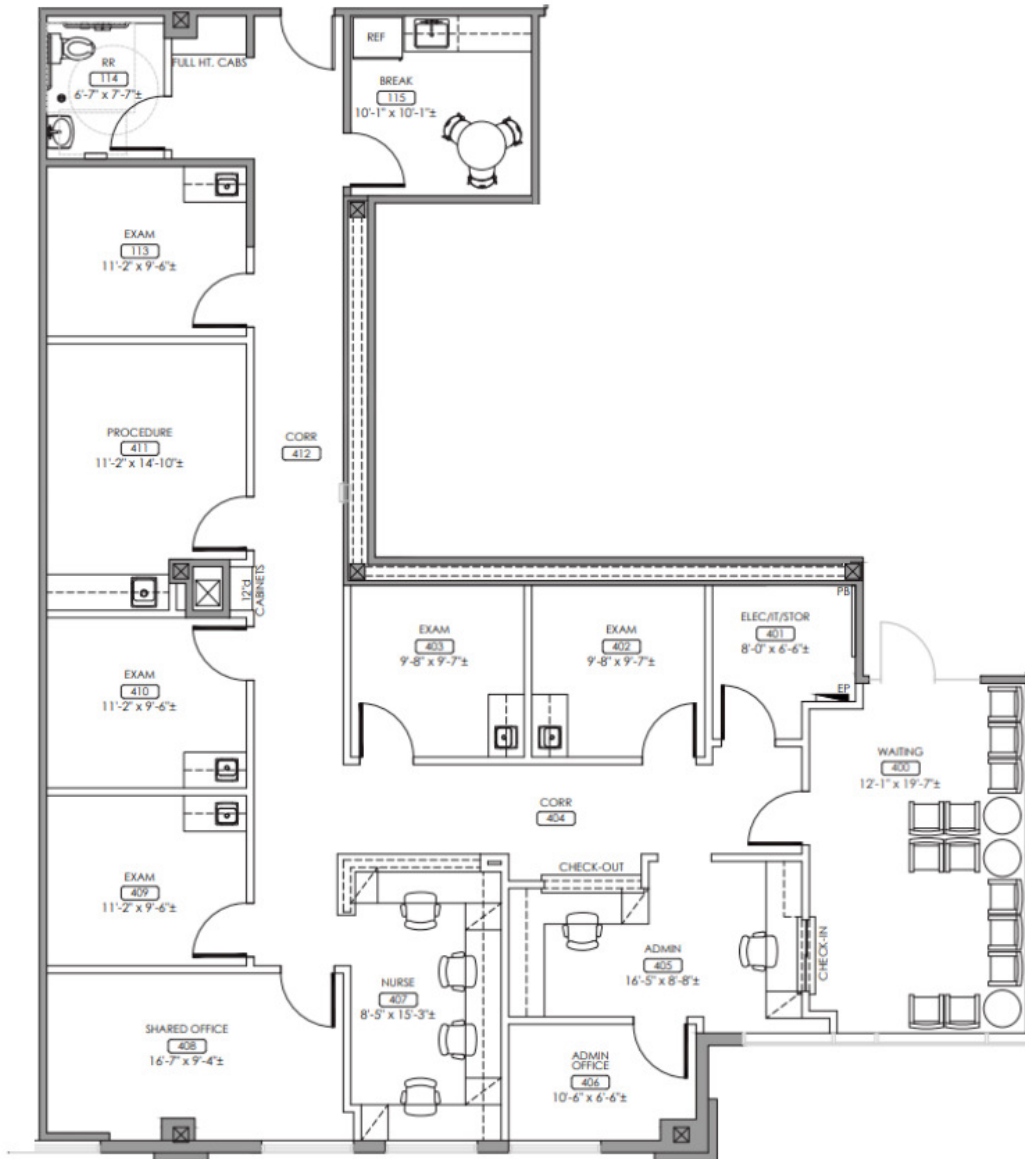
Lincoln

PLANO MEDICAL OFFICE BUILDING III

4001 W. 15th Street Plano, TX 75093

Suite 490

2,537 SF



Suite

Size

Suite 490

2,537 SF

Banks Newton
214.461.2388
bnewton@lpc.com

Douglas Maclay
214.461.2371
dmaclay@lpc.com

Elizabeth Madden
214.461.2366
emadden@lpc.com

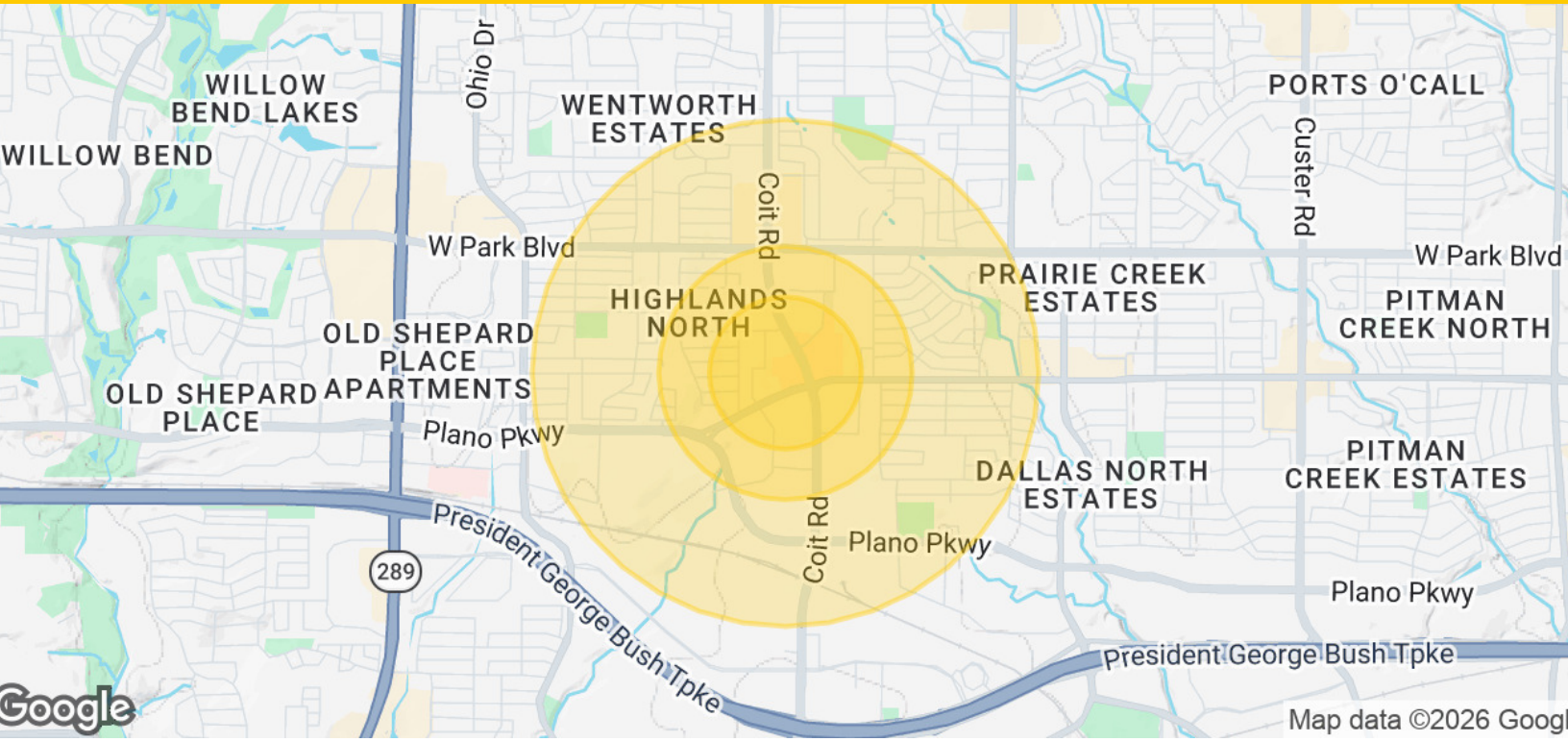
Lincoln

PLANO MEDICAL OFFICE BUILDING III

4001 W. 15th Street Plano, TX 75093

Demographics Map & Report

2,537 - 4,774 SF



Population	0.3 Miles	0.5 Miles	1 Mile
Total Population	1,153	3,137	12,725
Average Age	47	48	44
Average Age (Male)	43	44	42
Average Age (Female)	50	51	46
Households & Income	0.3 Miles	0.5 Miles	1 Mile
Total Households	465	1,306	5,229
# of Persons per HH	2.5	2.4	2.4
Average HH Income	\$108,244	\$107,784	\$117,559
Average House Value	\$443,405	\$430,123	\$401,196

2020 American Community Survey (ACS)

Banks Newton **Douglas Maclay** **Elizabeth Madden**
 214.461.2388 214.461.2371 214.461.2366
 bnewton@lpc.com dmaclay@lpc.com emadden@lpc.com

Lincoln



PLANO MEDICAL OFFICE BUILDING III

4001 W. 15th Street Plano, TX 75093

Leasing Information:
214.461.2388

Banks Newton
214.461.2388
bnewton@lpc.com

Douglas Maclay
214.461.2371
dmaclay@lpc.com

Elizabeth Madden
214.461.2366
emadden@lpc.com

Lincoln

8140 Walnut Hill Lane
Suite 700
Dallas, TX 75231

www.lpc.com