

For Lease

AVAILABLE:
9,200 SF (Divisible)

**929 Childs St.
Wheaton, IL**

AVAILABLE SPACE:	9,200 SF (DIVISIBLE)
WAREHOUSE:	6,000 SF
OFFICE:	3,200 SF (OR TO SUIT)
LOADING:	2 DID
PARKING	AMPLE
TRAILER PARKING:	15 STALLS
CLEAR HEIGHT:	13'
ZONING:	M-1
LEASE RATE:	SUBJECT TO OFFER

✓
Floor Drains

✓
**On-Site Trailer
Parking Or
Outside Storage**

✓
**Drive-Through
Access**

✓
**Flexible Office
Layout**

✓
**Close Proximity
To Downtown
Wheaton**

Presented By:

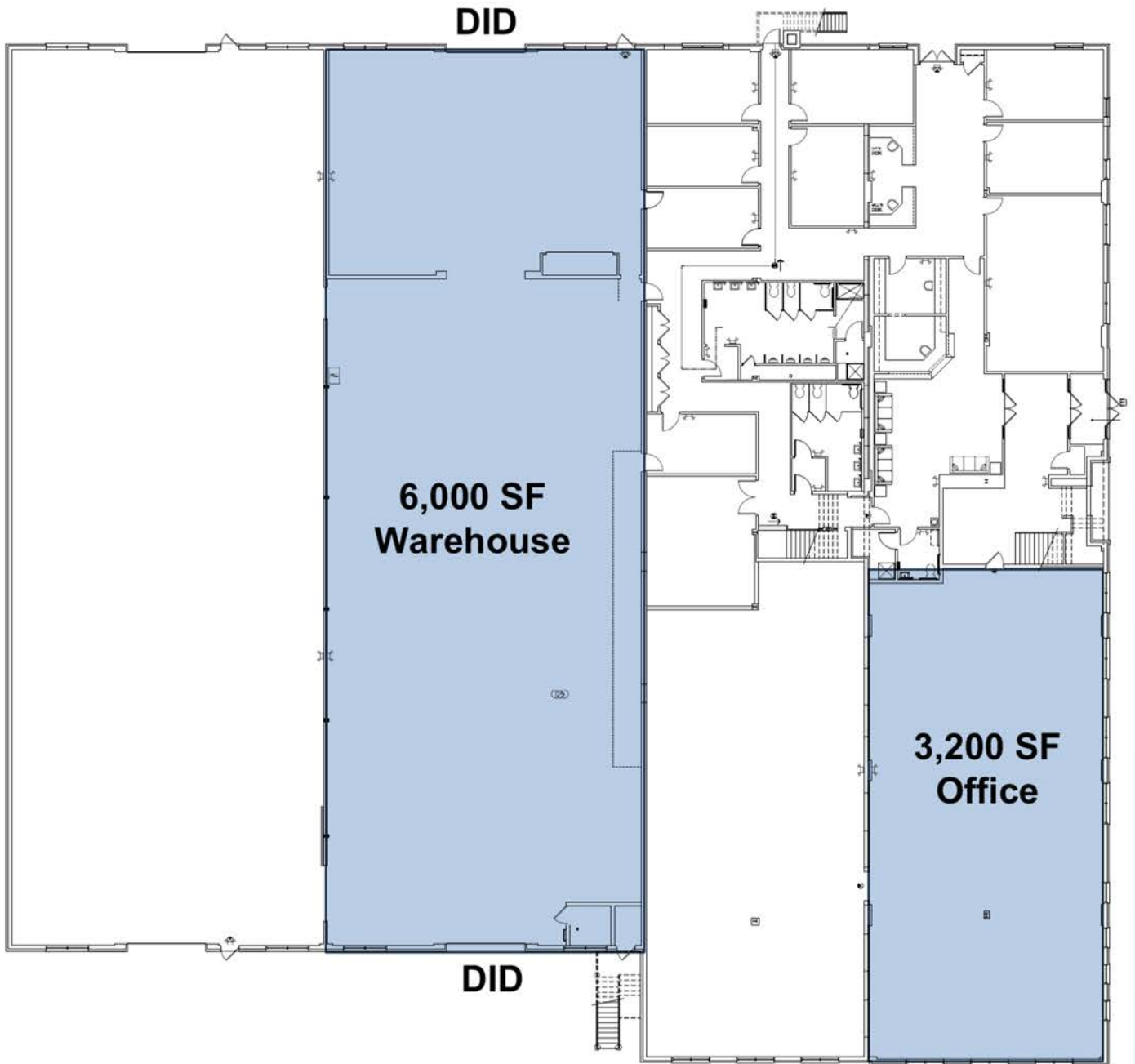
➤ **John M. Joyce**
847-612-0464
jjoyce@entreccommercial.com

➤ **Sam Deihls**
224-202-6290
sdeihls@entreccommercial.com

Property Photos



Floor Plan





**Exclusively
Presented By:**

ENTRE
Commercial Realty LLC

John M. Joyce
847-612-0464
jjoyce@entrecommercial.com

Sam Deihls
224-202-6290
sdeihls@entrecommercial.com

entrecommercial.com
3550 Salt Creek Lane, Suite 104
Arlington Heights, IL 60005