

Retail for Lease

PKWY

10420 City Parkway, Surrey

LOCATION

10420 City Parkway
Surrey, BC

LEASING CONTACTS

ALYCIA KAMER
Director, Commercial Leasing
604 558 8665
akamer@bosaproperties.com

CALLY ZERING
Leasing Manager, Commercial
778 357 0175
czering@bosaproperties.com

RACHEL SANGHA
Leasing Coordinator, Commercial
604 416 0286
rsangha@bosaproperties.com



**bosa
properties**

OVERVIEW

Bosa Properties is pleased to present a brand-new 2,059 square-foot CRU for lease in Tower 1 of Surrey's newest master-planned community.



PROJECT

PARKWAY is a four-towered mixed use master-plan with over 2,000 condo and dedicated rental homes.

With Downtown Surrey primed to be BC's most populous city by 2030, and an influx of infrastructure slated for development, PARKWAY offers an unbeatable opportunity for retailers.

Situated on the northwest corner of King George Boulevard and 104 Avenue, PARKWAY is at the centre of it all.



GROSS LEASABLE AREA

Up to 2,059 sq. ft.
(ability to demise)

TARGET OFFERINGS

- QSR
- Cafe
- Restaurant

OCCUPANCY

September 2025

NUMBER OF UNITS

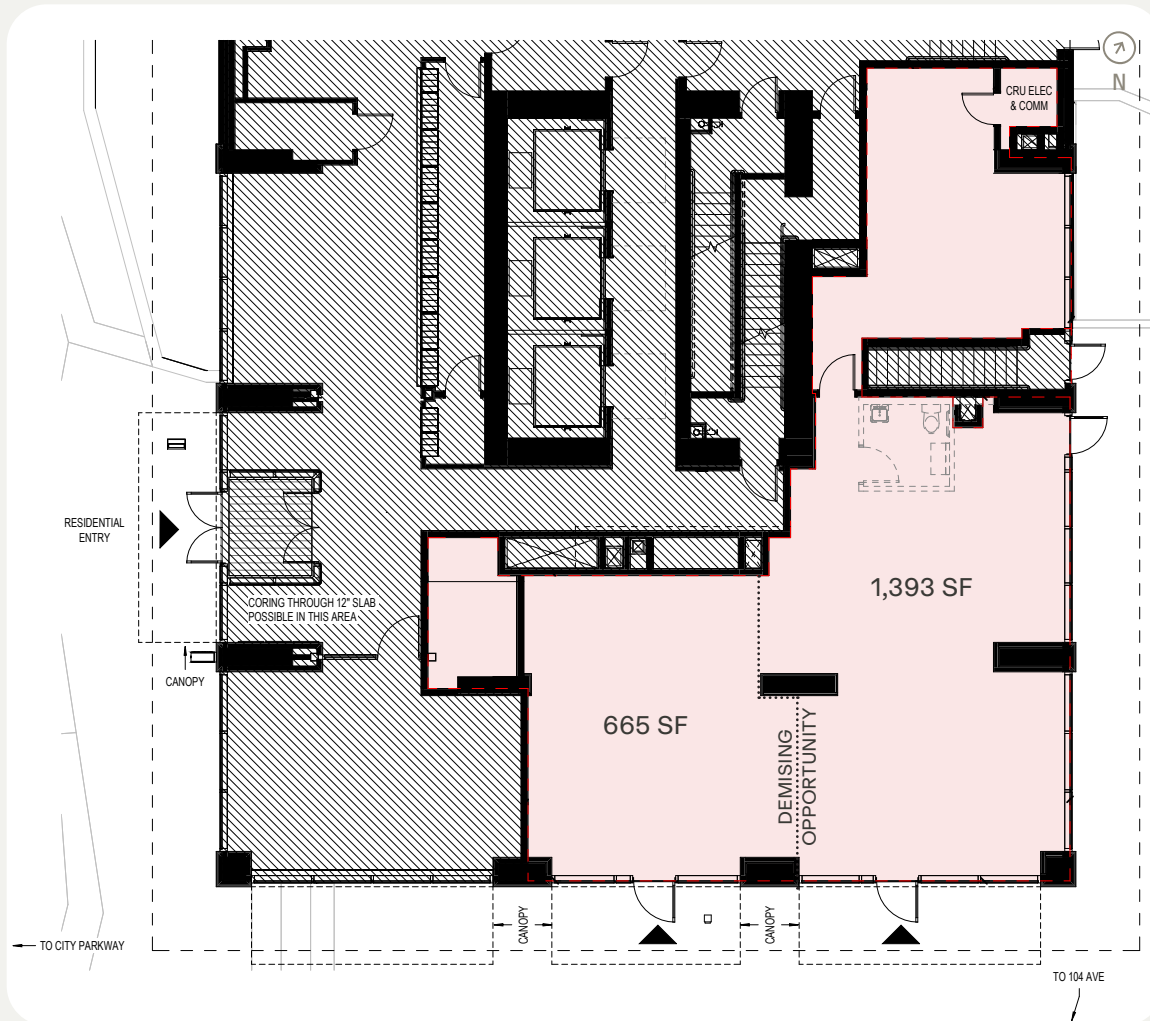
1 (demisable into 2)

PARKING STALLS

5

FLOOR PLAN

PARKWAY



LEASABLE AREA

Up to 2,059 sq. ft.

ASKING RATE

Please reach out to leasing contacts.

OPERATING EXPENSES

\$22.00 per sq. ft. (2025 estimate)

AVAILABILITY

September 2025

CONTACT

Get in Touch

HEAD OFFICE

Bosa Properties
1201-838 West Hastings St
Vancouver, BC V6C 0A6

Office 604 416 0286

➔ bosaproperties.com

LEASING CONTACT

ALYCIA KAMER
Director, Commercial Leasing
604 558 8665
akamer@bosaproperties.com

CALLY ZERING
Leasing Manager, Commercial
778 357 0175
czering@bosaproperties.com

RACHEL SANGHA
Leasing Coordinator, Commercial
604 416 0286
rsangha@bosaproperties.com



PKWY

bosa
properties