



20 ACRES FOR SALE IN LEE COUNTY

PROPERTY OVERVIEW

PRICE | \$420,000

PIN | 9663-71-8948-00

ACREAGE | +/- 20 ACRES

ZONING | RA

+/- 20 acres available off Poplar Springs Church Road in Lee County, an excellent location for future residential development, PIN 9663-71-8948-00. Municipal water available. Refer to the MLS docs to see Preliminary Plat with the prior approved subdivision. Zoning allows for approximately one-acre lots. An adjoining 47-acre parcel (PIN 9663-62-7410-00) is also available. Short commute to Sanford, Moncure, and surrounding areas. Within half a mile of a voluntary ag district

MATTHEW WIMBERLY, RF, ACF

NC BROKER

C: 910.639.0124

MATT@CSGNC.COM

CAROLINA SUMMIT GROUP

390 SW Broad Street

Southern Pines, NC 28387

910.684.5353

carolinasummitgroup.com

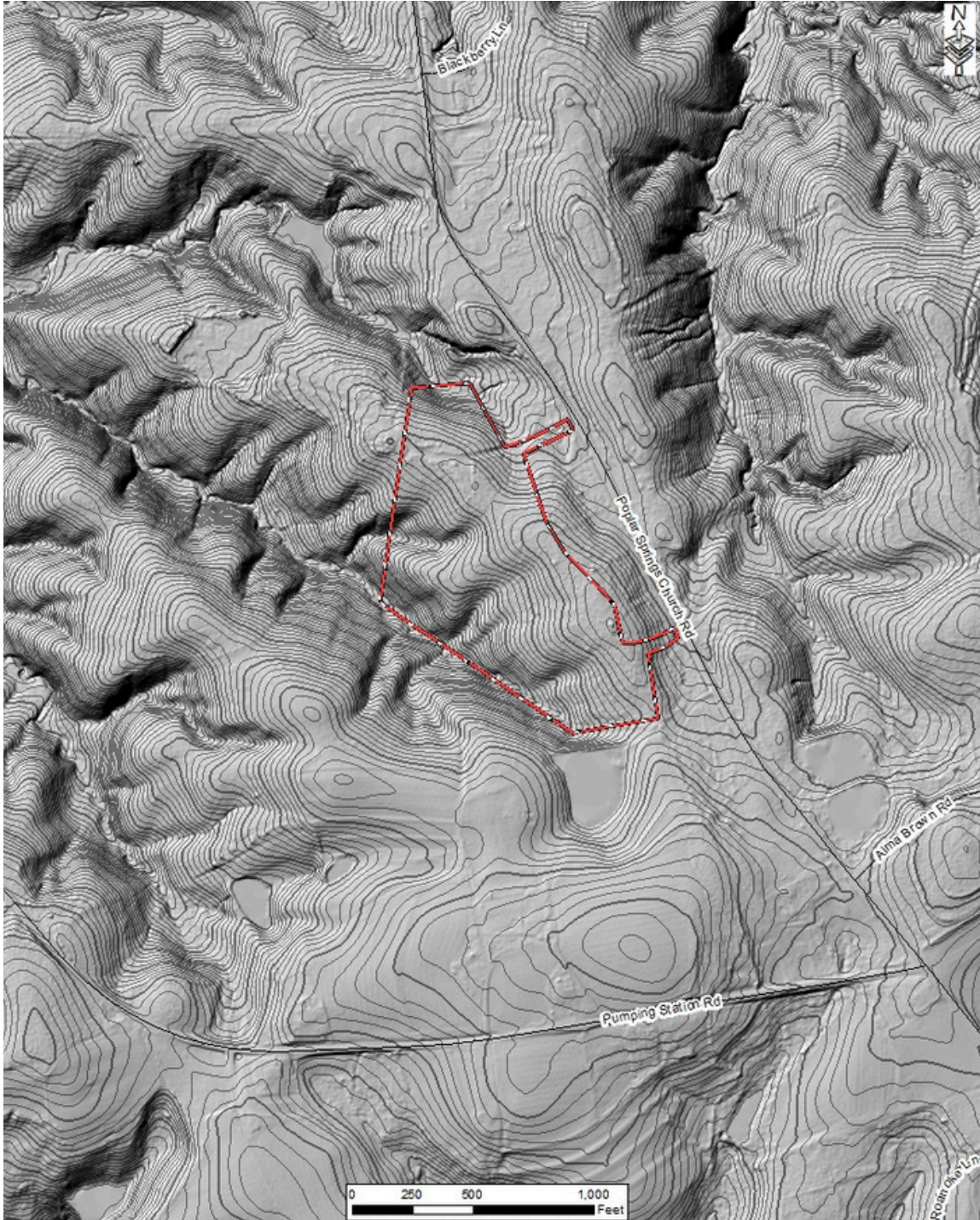
UTILITIES MAP



MATTHEW WIMBERLY, RF, ACF
NC BROKER
C: 910.639.0124
MATT@CSGNC.COM

CAROLINA SUMMIT GROUP
390 SW Broad Street
Southern Pines, NC 28387
910.684.5353
carolinasummitgroup.com

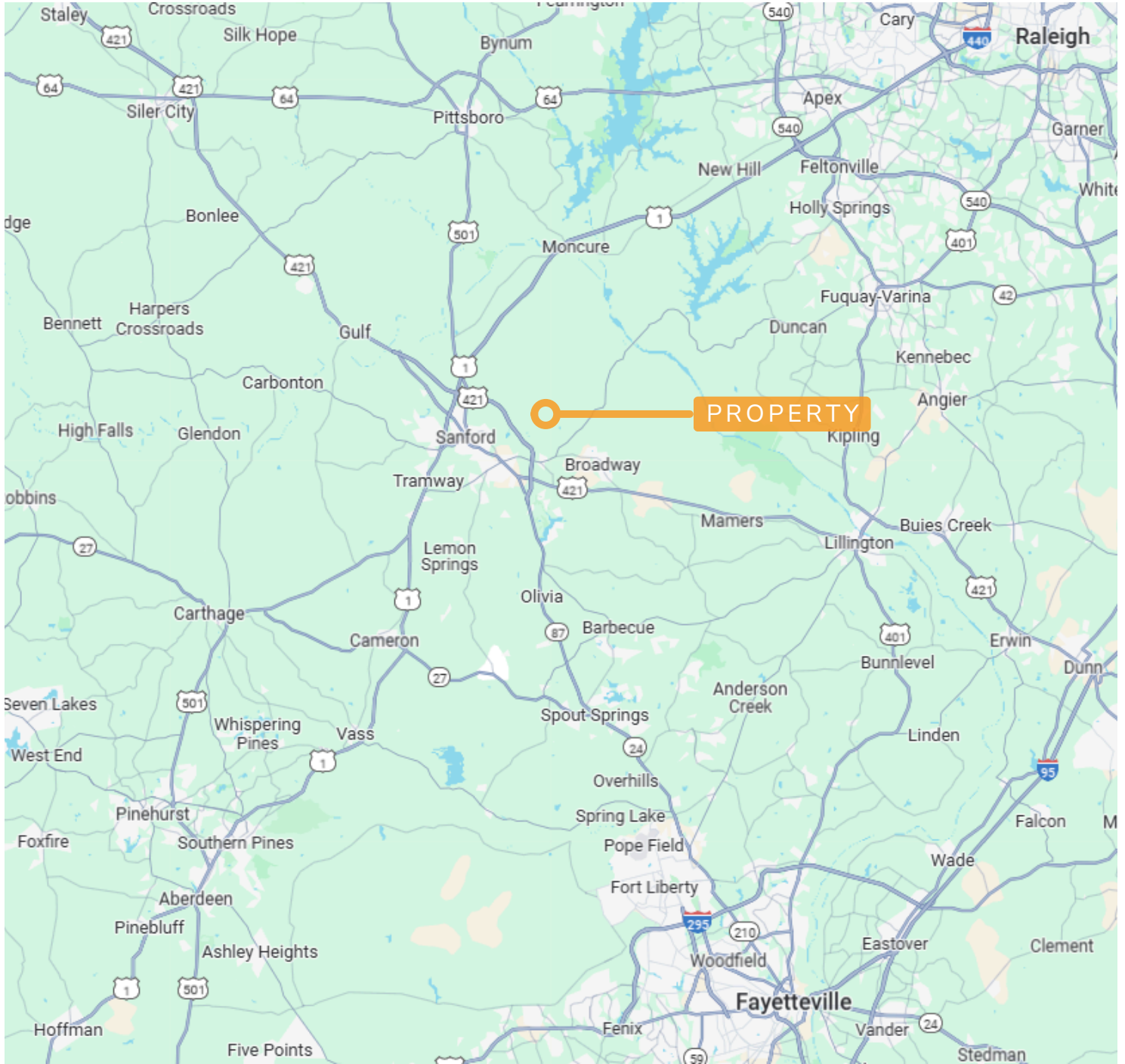
TOPO MAP



MATTHEW WIMBERLY, RF, ACF
NC BROKER
C: 910.639.0124
MATT@CSGNC.COM

CAROLINA SUMMIT GROUP
390 SW Broad Street
Southern Pines, NC 28387
910.684.5353
carolinasummitgroup.com

LOCATION MAP



MATTHEW WIMBERLY, RF, ACF
NC BROKER
C: 910.639.0124
MATT@CSGNC.COM

CAROLINA SUMMIT GROUP
390 SW Broad Street
Southern Pines, NC 28387
910.684.5353
carolinasummitgroup.com