



PROPERTY BROKERAGE INC.
REAL ESTATE
Sales | Leasing | Management



1212 N SANTA FE

1212 N Santa Fe, Suite C
Suite C
Vista, CA 92083

Contact:

760-224-6017

ERIK ACHEFF
Broker

License: 01960624
erik@propbrokerage.com

Annual Rent:

\$22.50
/ Sq. Ft.

\$1,500.00 monthly

Rental Area: 800 Sq. Ft.

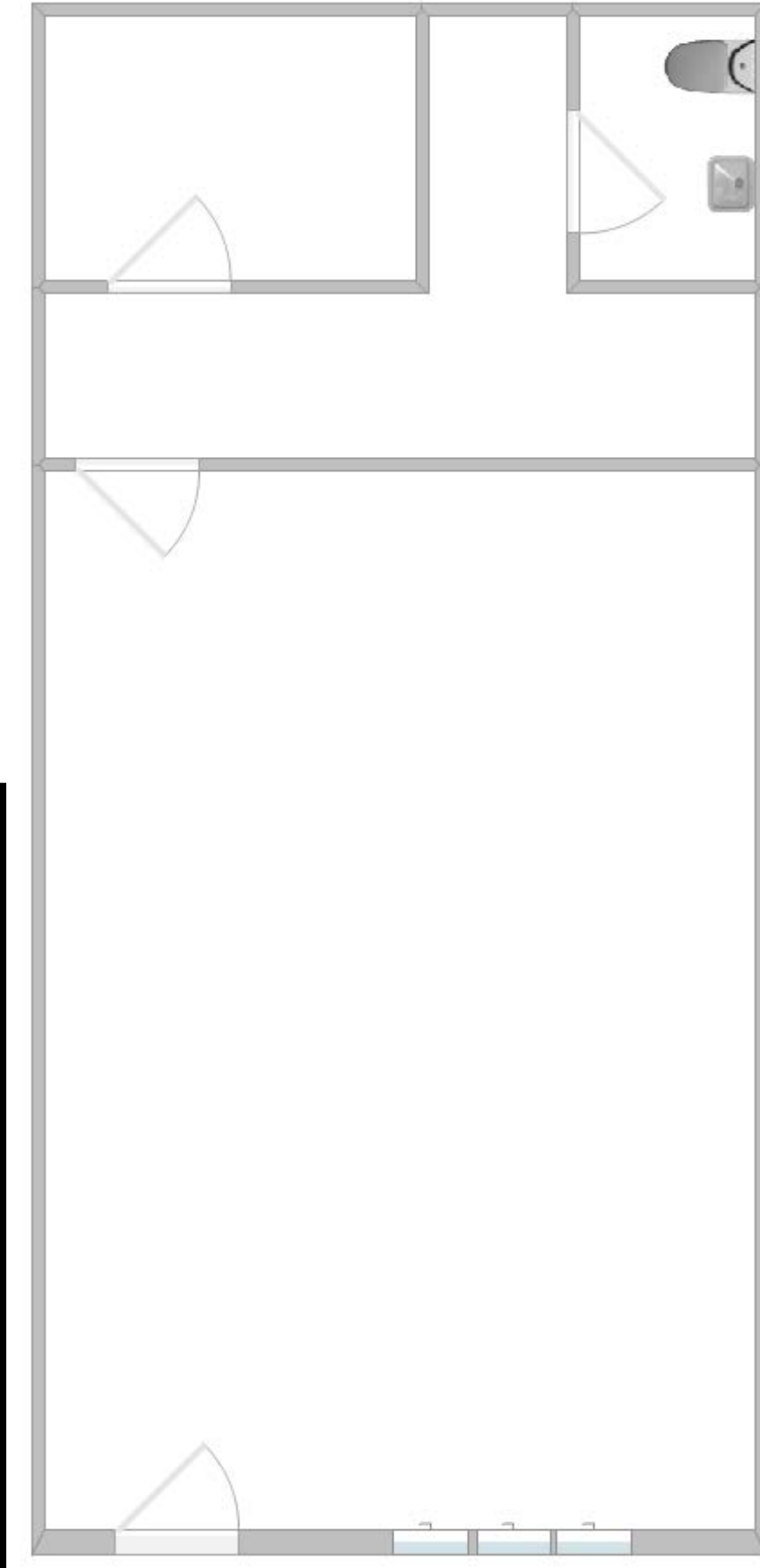
Year Built: 1982

©Copyright 2011-2025 CRE Tech, Inc. All Rights Reserved..



LEASE

SUITE C



*NOT DRAWN TO SCALE



Contact:

760-224-6017

Prime Retail Space for Lease – High-Traffic Location in Vista, CA!

Looking for the perfect retail space in a high-visibility location. This prime retail unit at 1212 N Santa Fe, Vista, CA, offers an excellent storefront along a busy street, ensuring maximum exposure for your business. Great for tax/insurance, party supplies, flower shops, artisan shops, offices, personal services, postal services, pharmacies, fitness clubs, meeting spaces, or locksmiths.

Don't miss this opportunity to elevate your business in a prime Vista location! Contact us today for leasing details and a tour.

This information has been obtained from sources believed reliable. We have not verified it and make no guarantee, warranty or representation about it. Any projections, opinions, assumptions or estimates used are for example only and do not represent the current or future performance of the property. You and your advisors should conduct a careful, independent investigation of the property to determine to your satisfaction the suitability of the property for your needs. Photos herein are the property of their respective owners and use of these images without the express written consent of the owner is prohibited.

