



Retail Building

4675 E SR 44, Suite #106
Wildwood, FL 34785

For Lease: \$55/sf/yr + NNN



Exclusively Listed By:



FRAN DANN-AKIN, SIOR

8550 NE 138th Lane, Suite 2000
The Villages, FL 32159
fran@franakin.com
Direct: (352) 266-7795



VAN AKIN, SIOR

500 NE 8th Avenue
Ocala, FL 34470
van@vanakin.net
Direct: (352) 804-2446

Executive Summary

For Lease: \$55/sf/yr + NNN \$6.49/sf/yr

Akin Realty Company is pleased to present net lease available for 2,000 SF space located at 4675 East SR 44, Building 106, Wildwood, Fl. 34785.

- FORMER INSIGHT CREDIT UNION
- SIGNALIZED HARD CORNER BROWNWOOD, VILLAGES FL
- 2,000 SF
- Class A Building suitable for a variety of uses with Drive Thru
- Premier location in sought after area, across from Brownwood
- Strong Villages Corridor includes Brownwood Town Square, Publix, Campus Credit Union, McDonalds, Chipotle Grill and more.
- High Visibility and Direct Frontage exposure SR 44
- 23,500 vehicles per day.



Area Amenities


THE BROWNWOOD
Hotel & Spa

WOLFGANG PUCK
KITCHEN

SUBWAY
CAMPUS USA credit union
Publix

The Villages
Paddock Square
Brownwood



GEORGE NAHAS CHEVROLET
FAST. FAIR. FRIENDLY.

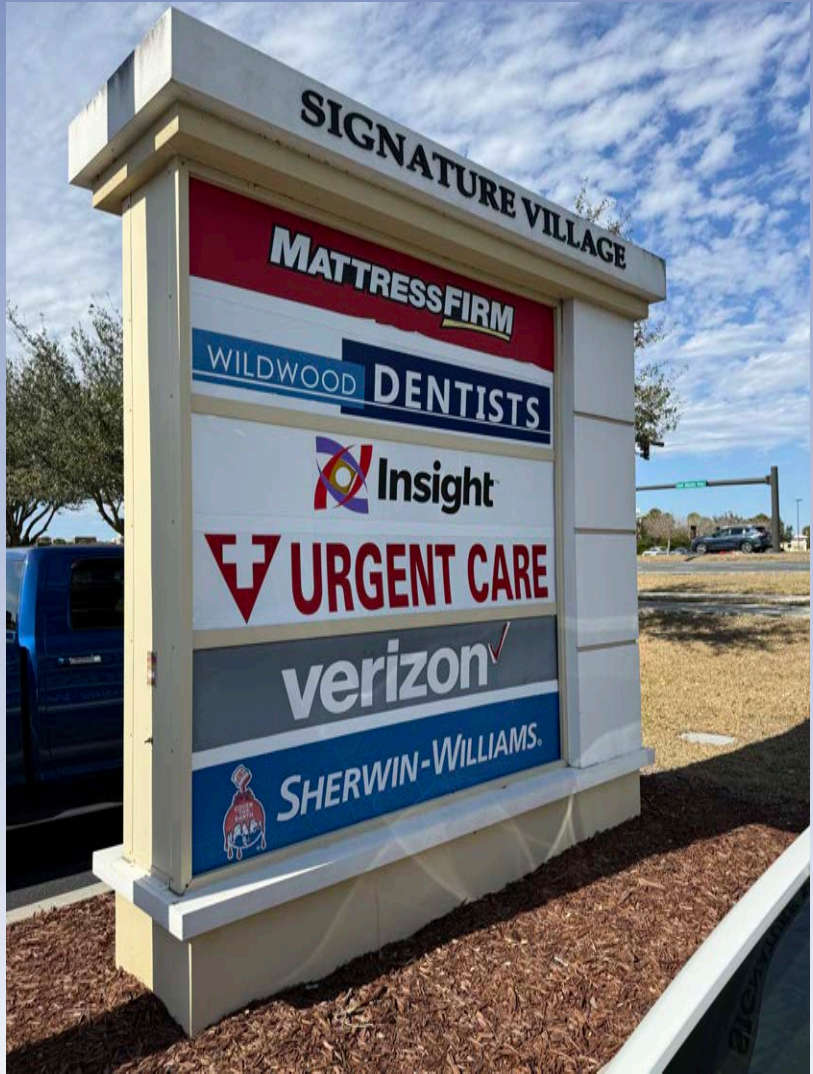


2,000 SF Retail

CHIPOTLE MEXICAN GRILL
MATTRESS FIRM
SHERWIN WILLIAMS
verizon wireless
Urgent & Primary Care
VIZAVEE

UFHealth
EMERGENCY & URGENT CARE CENTER

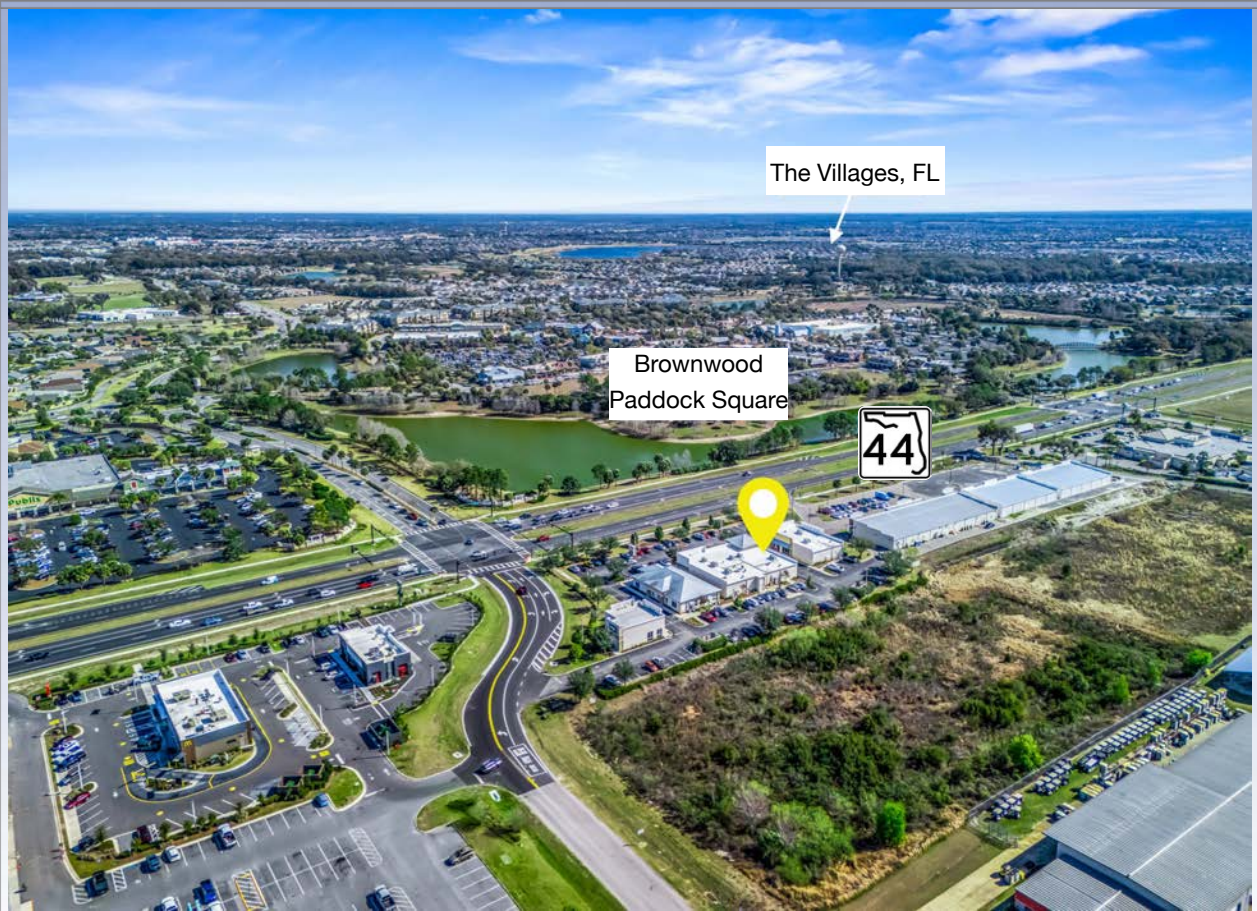
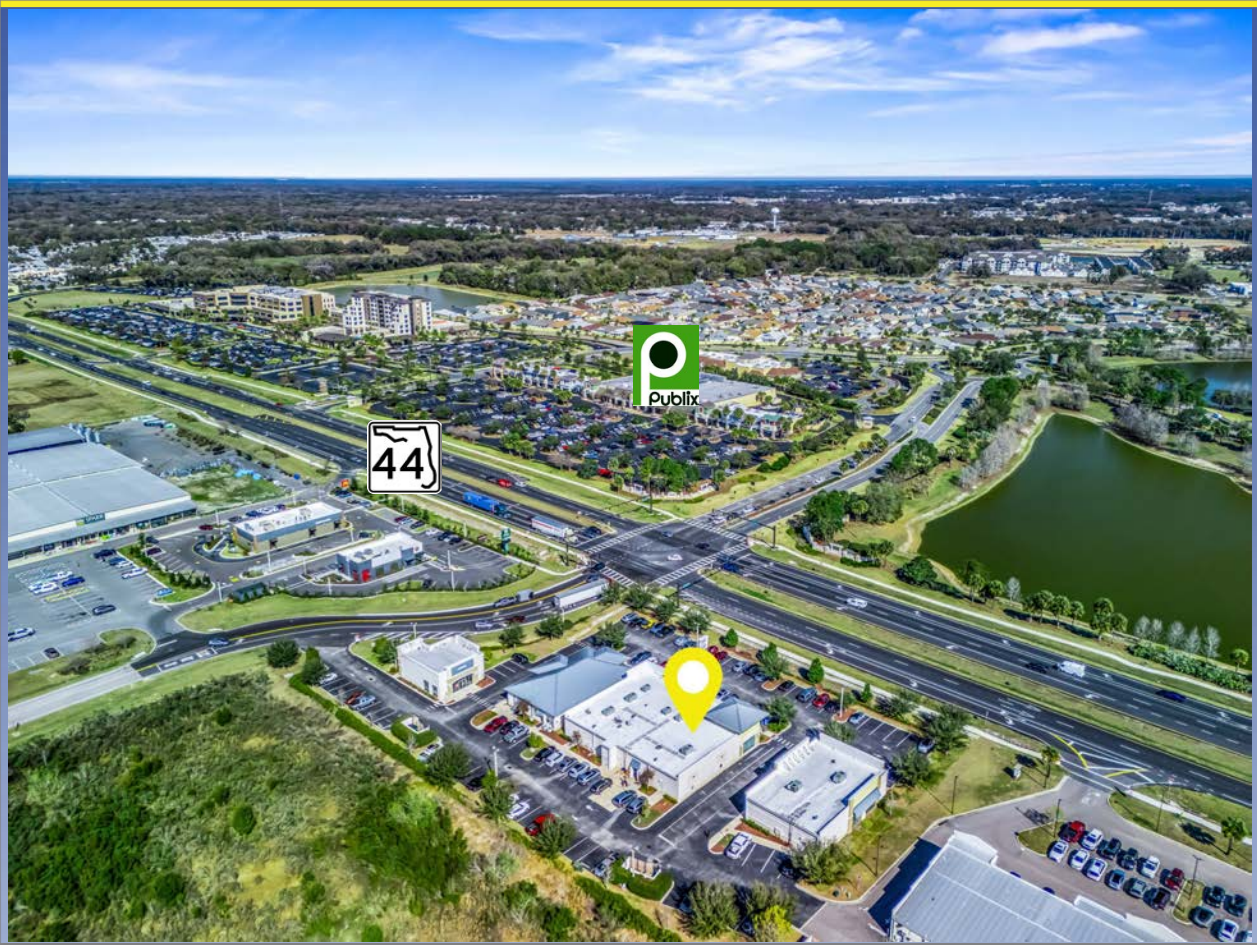
Photos



Photos

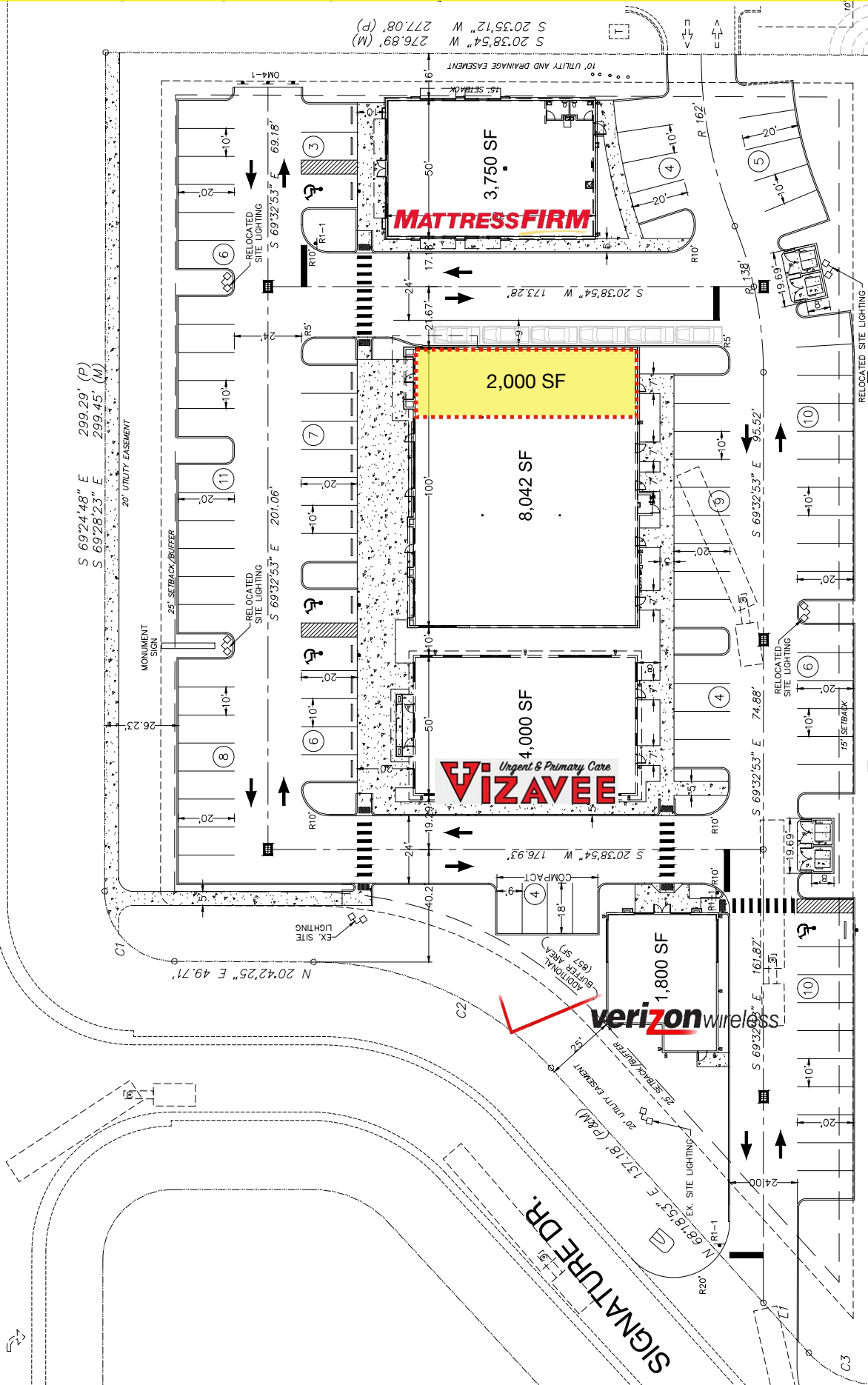


Aerials

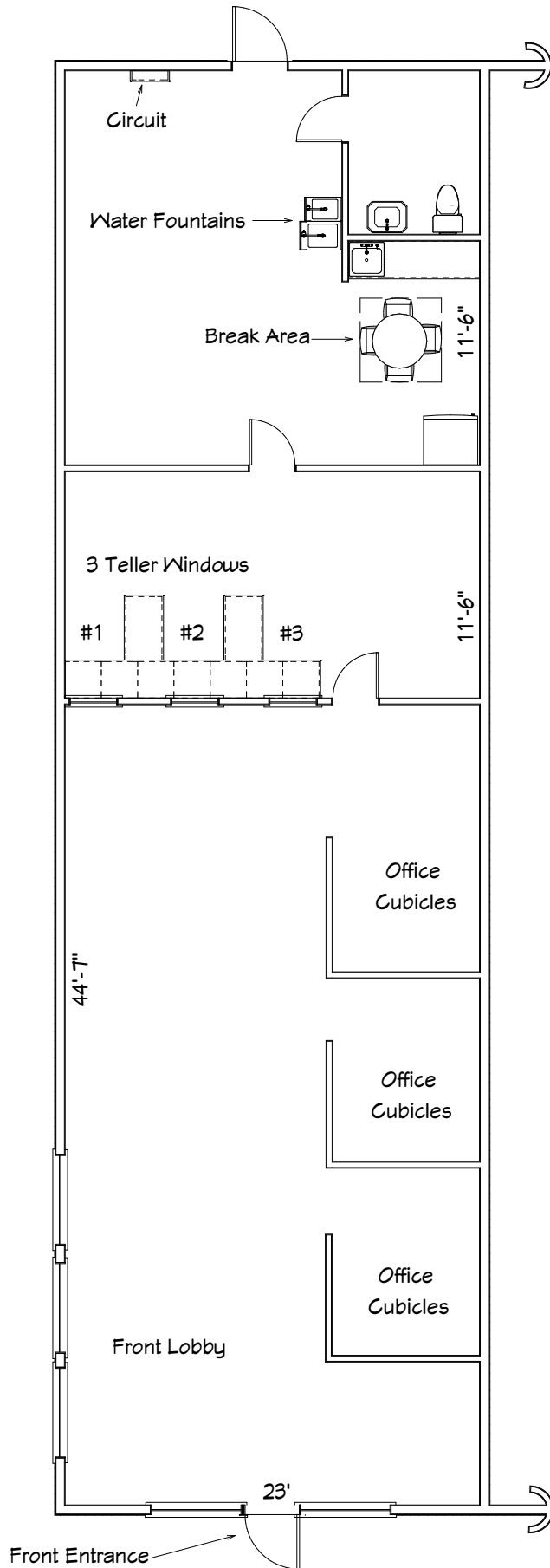


Site Diagram

STATE ROAD 44



Floor Diagram



Demographic and Income Profile

4675 FL-44, Wildwood, Florida, 34785 2

4675 FL-44, Wildwood, Florida, 34785

Ring: 10 mile radius



Summary	Census 2020	2025	2030
Total Population	183,008	209,934	241,753
Total Households	90,858	106,294	123,781
Family Households	57,603	66,556	77,430
Average Household Size	1.93	1.91	1.89
Owner Occupied Housing Units	76,598	91,016	106,025
Renter Occupied Housing Units	14,260	15,278	17,757
Median Age	68.0	69.0	70.0

Trends 2025 - 2030	Area	State	National
Population	2.9%	1.1%	0.4%
Households	3.1%	1.3%	0.6%
Family Population	3.1%	1.3%	0.5%
Owner Occupied Housing Units	3.1%	1.8%	0.0%
Median Household Income	2.3%	2.9%	2.5%

Population by Age	Census 2020		2025		2030	
	Number	Percent	Number	Percent	Number	Percent
0-4	3,769	2.1%	4,361	2.1%	5,016	2.1%
5-9	4,263	2.3%	4,553	2.2%	5,059	2.1%
10-14	4,335	2.4%	4,964	2.4%	5,318	2.2%
15-19	4,115	2.3%	4,833	2.3%	5,376	2.2%
20-24	3,787	2.1%	4,647	2.2%	5,398	2.2%
25-29	4,640	2.5%	5,129	2.4%	6,196	2.6%
30-34	5,099	2.8%	6,023	2.9%	6,417	2.6%
35-39	5,333	2.9%	6,195	3.0%	7,263	3.0%
40-44	5,045	2.8%	6,176	2.9%	7,209	3.0%
45-49	5,485	3.0%	6,031	2.9%	7,377	3.0%
50-54	6,522	3.6%	6,851	3.3%	7,365	3.0%
55-59	9,740	5.3%	9,397	4.5%	9,670	4.0%
60-64	14,932	8.2%	15,496	7.4%	15,461	6.4%
65-69	24,041	13.1%	25,315	12.1%	27,385	11.3%
70-74	32,242	17.6%	35,125	16.7%	39,420	16.3%
75-79	26,029	14.2%	32,775	15.6%	37,729	15.6%
80-84	14,340	7.8%	19,521	9.3%	25,645	10.6%
Age 85+	9,292	5.1%	12,543	6.0%	18,450	7.6%

Retail Goods and Services Expenditures

Retail Goods and Services Expenditures


4675 FL-44, Wildwood, Florida, 34785 2
 4675 FL-44, Wildwood, Florida, 34785
 Ring: 10 mile radius



Top Tapestry Segments	Percent	Demographic Summary	2025	2030
The Elders (J2)	60.6%	Population	209,934	241,753
Silver and Gold (J4)	8.8%	Households	106,294	123,781
Senior Escapes (J1)	8.6%	Families	66,556	77,430
Rural Resort Dwellers (I5)	3.8%	Median Age	69.0	70.0
Rural Versatility (E5)	3.6%	Median Household Income	\$70,281	\$78,852

	Spending Potential Index	Average Amount Spent	Total
Apparel and Services	73	\$1,799.36	\$191,261,482
Men's	74	\$356.30	\$37,872,521
Women's	82	\$688.43	\$73,176,066
Children's	56	\$187.33	\$19,912,372
Footwear	73	\$399.04	\$42,415,405
Watches & Jewelry	68	\$136.13	\$14,470,170
Apparel Products and Services (1)	69	\$32.13	\$3,414,949
Computer			
Computers and Hardware for Home Use	77	\$173.83	\$18,476,855
Portable Memory	85	\$3.26	\$346,477
Computer Software	76	\$12.79	\$1,359,958
Computer Accessories	82	\$16.42	\$1,745,489
Education	80	\$3,267.27	\$347,291,512
Educational Books, Supplies, and Other Expenditures	65	\$60.60	\$6,441,158
Other School Supplies	74	\$64.74	\$6,881,492

Data Note: The Spending Potential Index (SPI) is household-based, and represents the amount spent for a product or service relative to a national average of 100.

 **Source:** Esri forecasts for 2025 and 2030; Consumer Spending data are derived from the 2022 and 2023 Consumer Expenditure Surveys, Bureau of Labor Statistics.

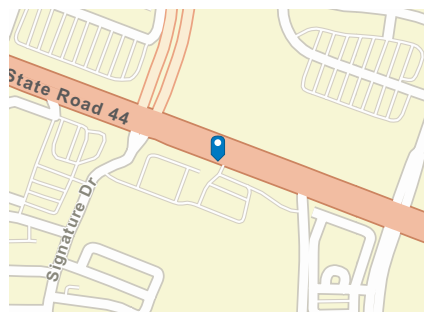
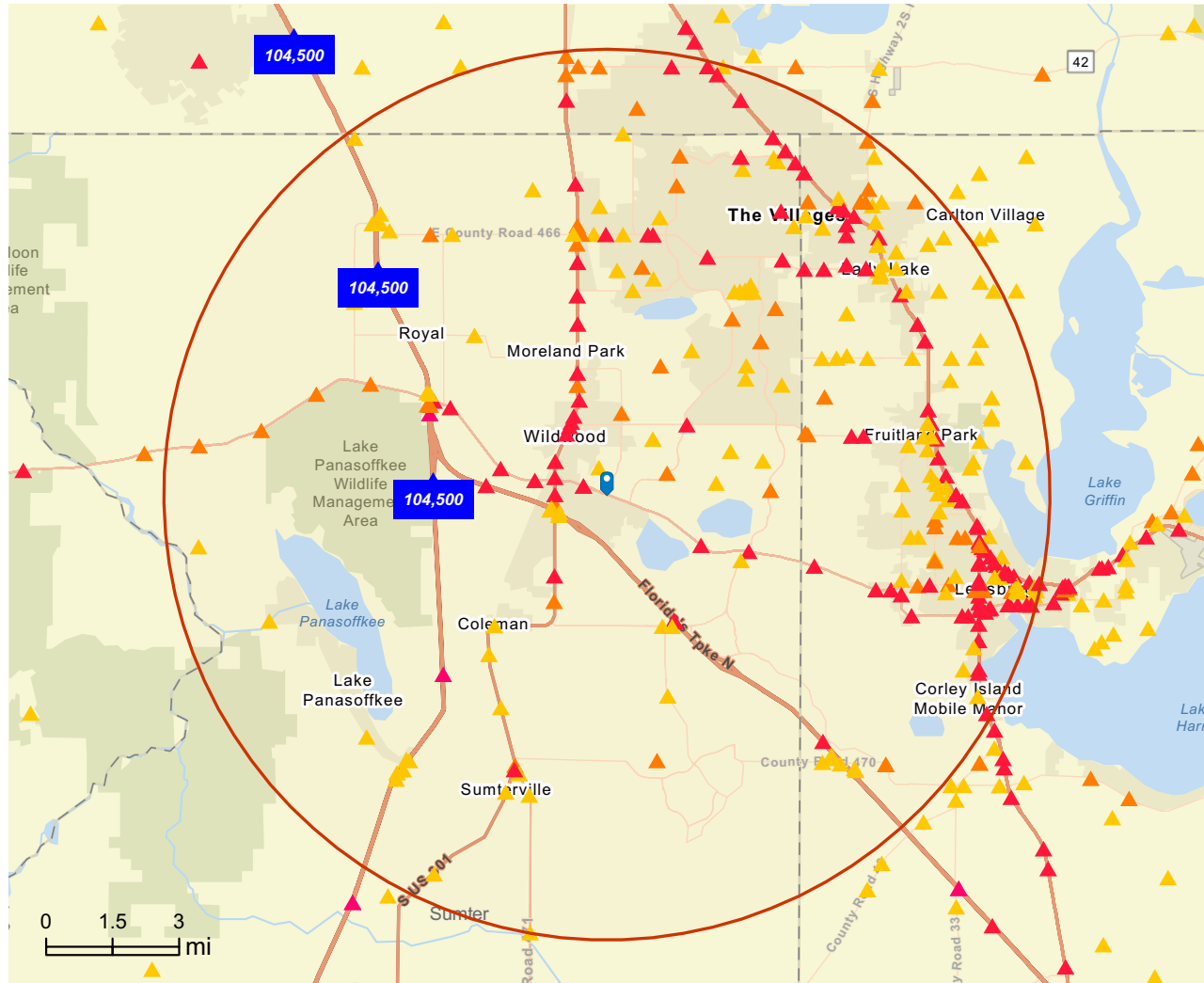
© 2026 Esri

Full report available upon request.

Traffic Count Map

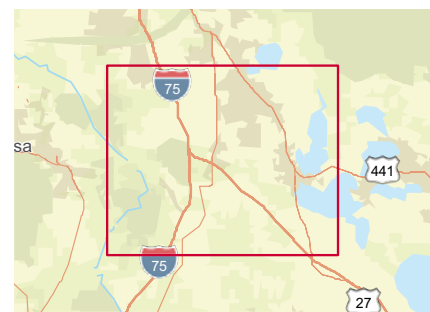
Traffic Count Map

4675 FL-44, Wildwood, Florida, 34785 2
 4675 FL-44, Wildwood, Florida, 34785
 Rings: 10 mile radii



Average Daily Traffic Volume

- ▲ Up to 8,000 vehicles per day
- ▲ 8,001 - 15,000
- ▲ 15,001 - 50,000
- ▲ 50,001 - 70,000
- ▲ 70,001 - 100,000
- ▲ More than 100,000 per day



DISCLAIMER AKIN REALTY COMPANY. Although information has been obtained from sources deemed reliable, neither Owner nor ARC makes any guarantees, warranties, or representations, express or implied, as to the completeness or accuracy as to the information contained herein. Any projections, opinions, assumptions, or estimates used are for example only. There may be differences between projected and actual results, and those differences may be material. The Property may be withdrawn without notice. Neither Owner nor ARC accepts any liability for any loss or damage suffered by any party resulting from reliance on this information.