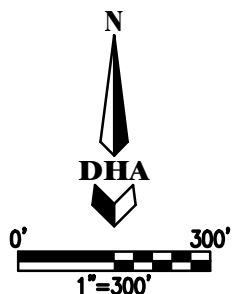


MICHIGAN PROPERTY SKETCH

COMPANY ORDERED BY: AD-CO Realty
 CONTACT PERSON: Ron Gelesko
 SKETCH DATE: 30 June 22
 PROJECT NO.: M-226105

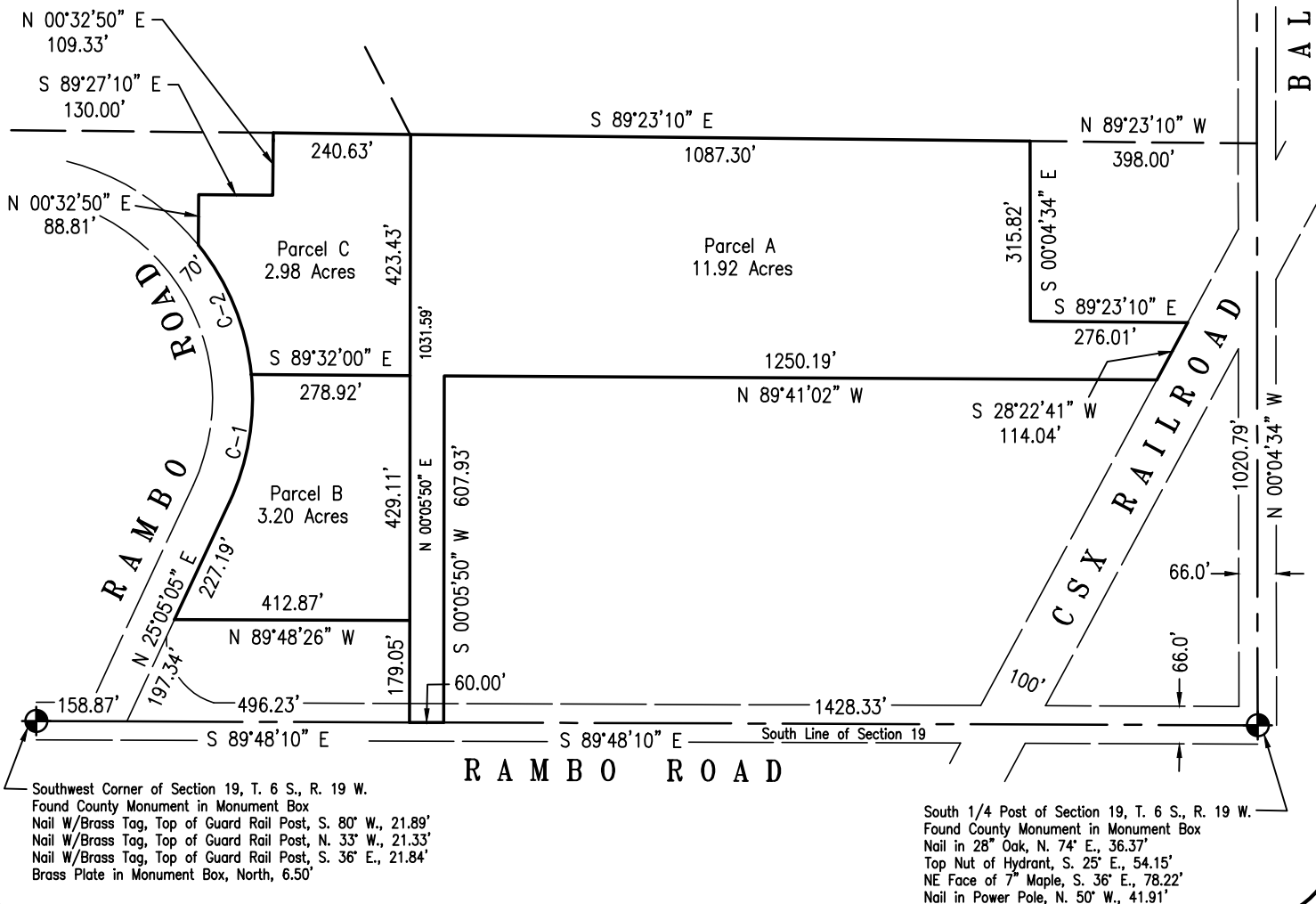
DRAWN BY: CS
 BUYER: N/A
 REVISED DATE: N/A
 ADDRESS: Rambo Road
 Bridgman, Michigan 49106



Center of Section 19, T. 6 S., R. 19 W.
 Found County Monument in Monument Box
 C/L Top Nut of Hydrant, N. 87° E., 26.54'
 Nail & Tag SW Side of Power Pole, S. 15° E., 67.82'
 Concrete Monument, West, 33.00'
 Nail & Tag NE Side of Power Pole, N. 22° W., 86.28'

CURVE DATA

Curve	Radius	Length	Tangent	Delta	Ch.Brg.	Ch.Dst.
C-1	429.00'	230.24'	117.97'	30°45'00"	N 09°42'33" E	227.49'
C-1	429.00'	248.58'	127.89'	33°11'58"	N 22°15'58" W	245.12'



TO: Ron Gelesko

Ronald Lee Harner P.S. #4001022436

Danch, Harner & Associates, Inc.



Land Surveyors • Professional Engineers
 Landscape Architects • Land Planners

www.danchharner.com

Office: 269-471-3010 • Fax: 269-471-7237

208 W. Mars Street • Berrien Springs, MI 49103