

SAVANNAH HEAVY INDUSTRIAL YARD

290 - 310 TELFAIR RD, 31415

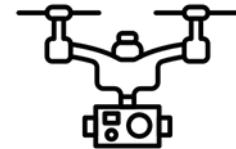


ENQUIRE FOR LEASE RATE

Heavy Industrial Yard For Lease

- Approximately 9.6 acre yard with 2.5 to 9.6 acres available
- 2,400 sf office with bathroom
- Fully stabilized with concrete landing pads
- Fenced with Manual Gate
- Heavy Industrial Zoning
- Container Stacking with City approval
- \pm 3.4 miles to Garden City Terminal and \pm 2.2 miles to Ocean Terminal
- Available Now

DRONE FOOTAGE



PROPERTY WEBPAGE



For more information, please contact:
912 314 4540

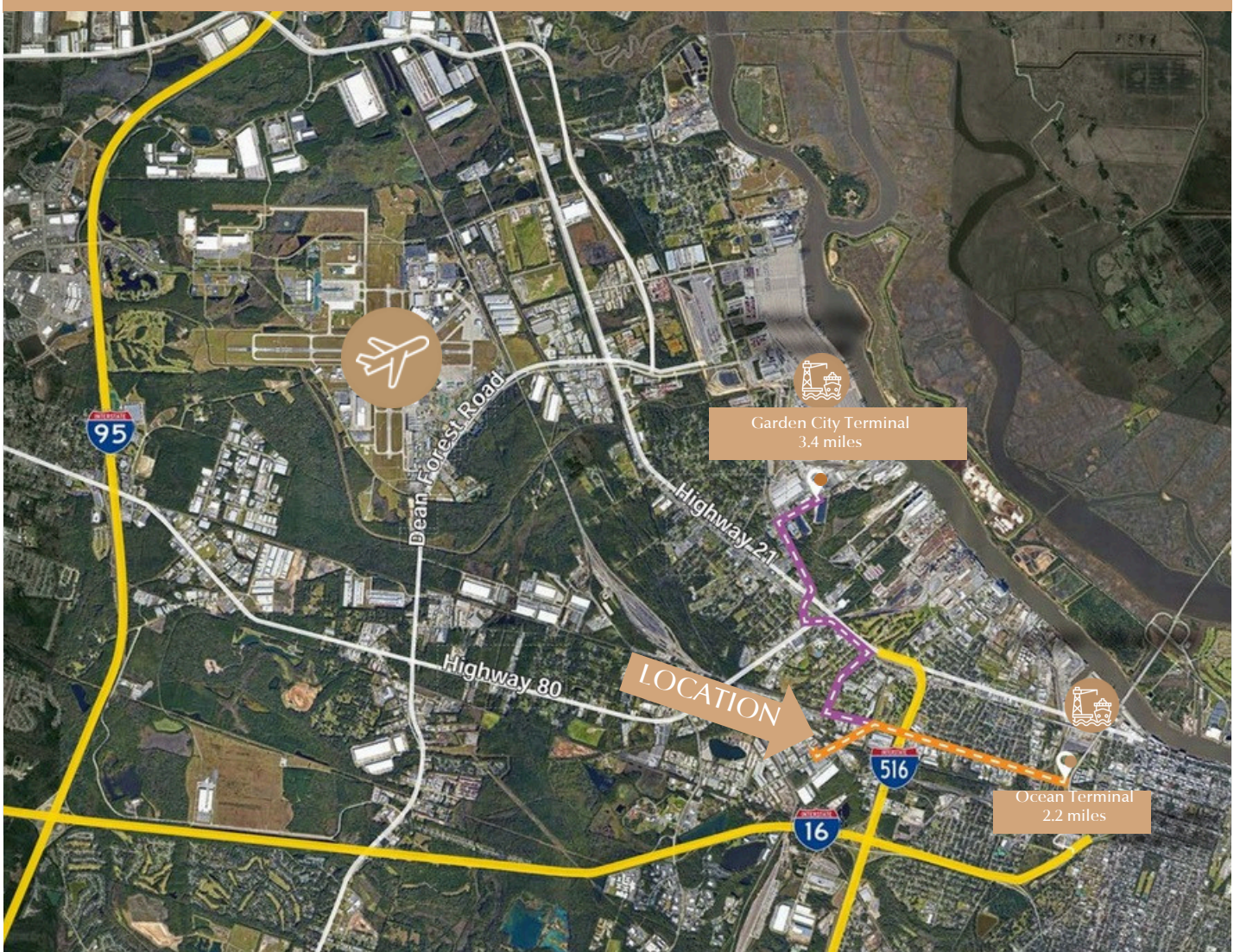
RIVR
David Gaule
Principal
dgaule@rivr.re

JLL
Bennett Rudder
Managing Director
bennett.rudder@jll.com

JLL
Lindsey Wilmot
Vice President
lindsey.wilmot@jll.com

PROPERTY LOCATION

290 - 310 TELFAIR RD, 31415



Ports of Savannah

Less than 3.5 miles



Interstate 16

1.5 miles



AIRPORT

8.3 miles



ATLANTA

242 MILES



PHOTOS

290 - 310 TELFAIR RD, 31415



PHOTOS

290 - 310 TELFAIR RD, 31415



SITE PLAN & OFFICE

290 - 310 TELFAIR RD, 31415

