



Conceptual Rendering

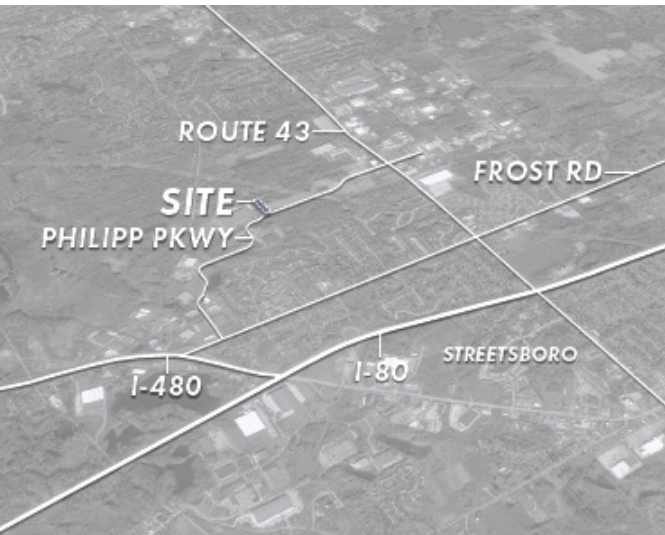
**BUILD TO SUIT
FOR LEASE OR FOR SALE**

FROST ROAD COMMERCE CENTER
Philipp Pkwy & Frost Rd | Streetsboro, OH 44255

David Stecker
Managing Director
+1 216 937 1965
david.stecker@jll.com

PROPERTY HIGHLIGHTS

- ± 3.44 Acres
- Zoning: I-1 Industrial
- Adjacent parcels available
- Utilities available to the site
- Close proximity to I-80 and I-480 with easy highway access



DEMOGRAPHICS

TOTAL POPULATION

1 MILE	5 MILES	10 MILES
3,052	58,826	266,837

DAYTIME POPULATION

1 MILE	5 MILES	10 MILES
3,967	69,592	274,840

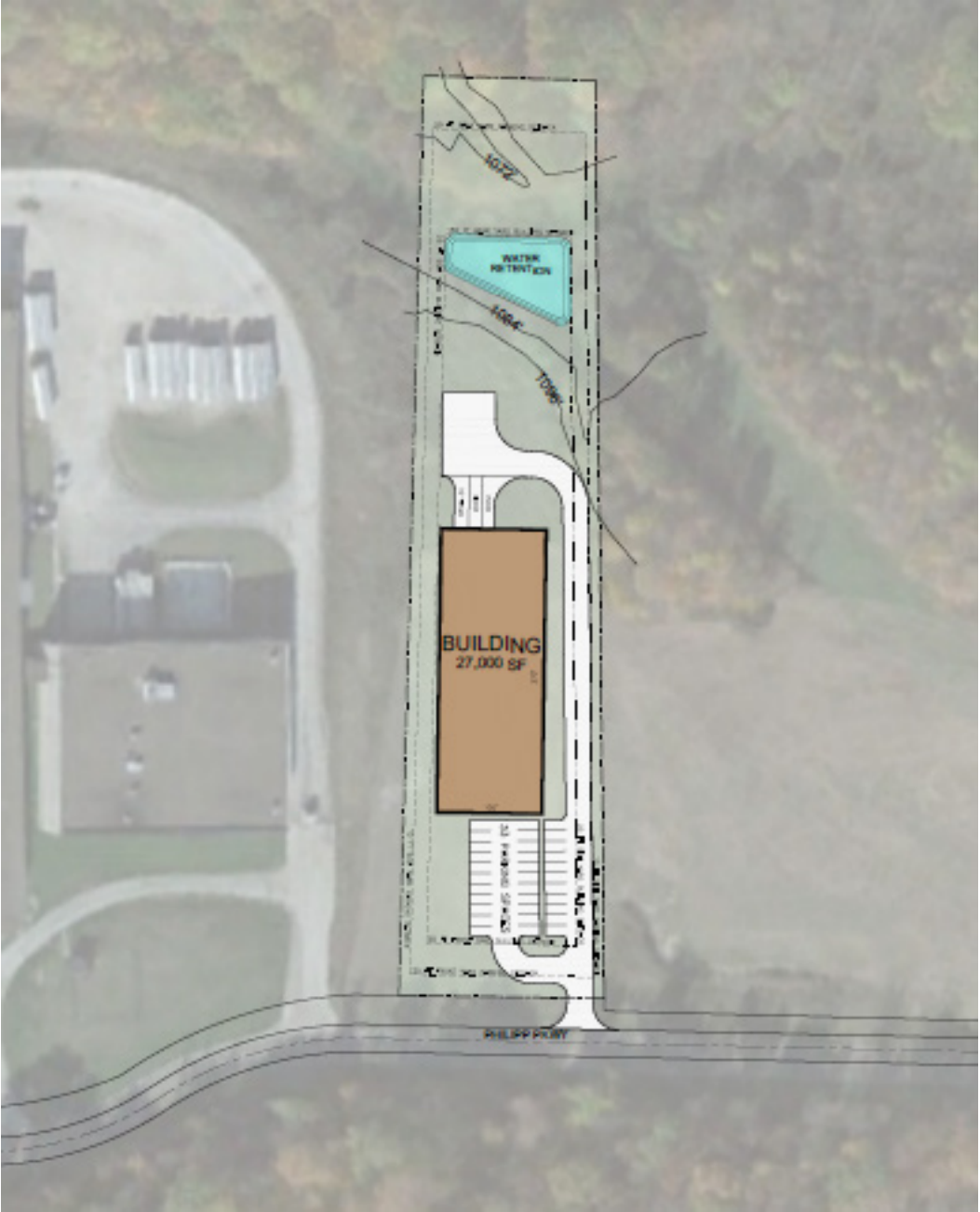
DAYTIME WORKERS

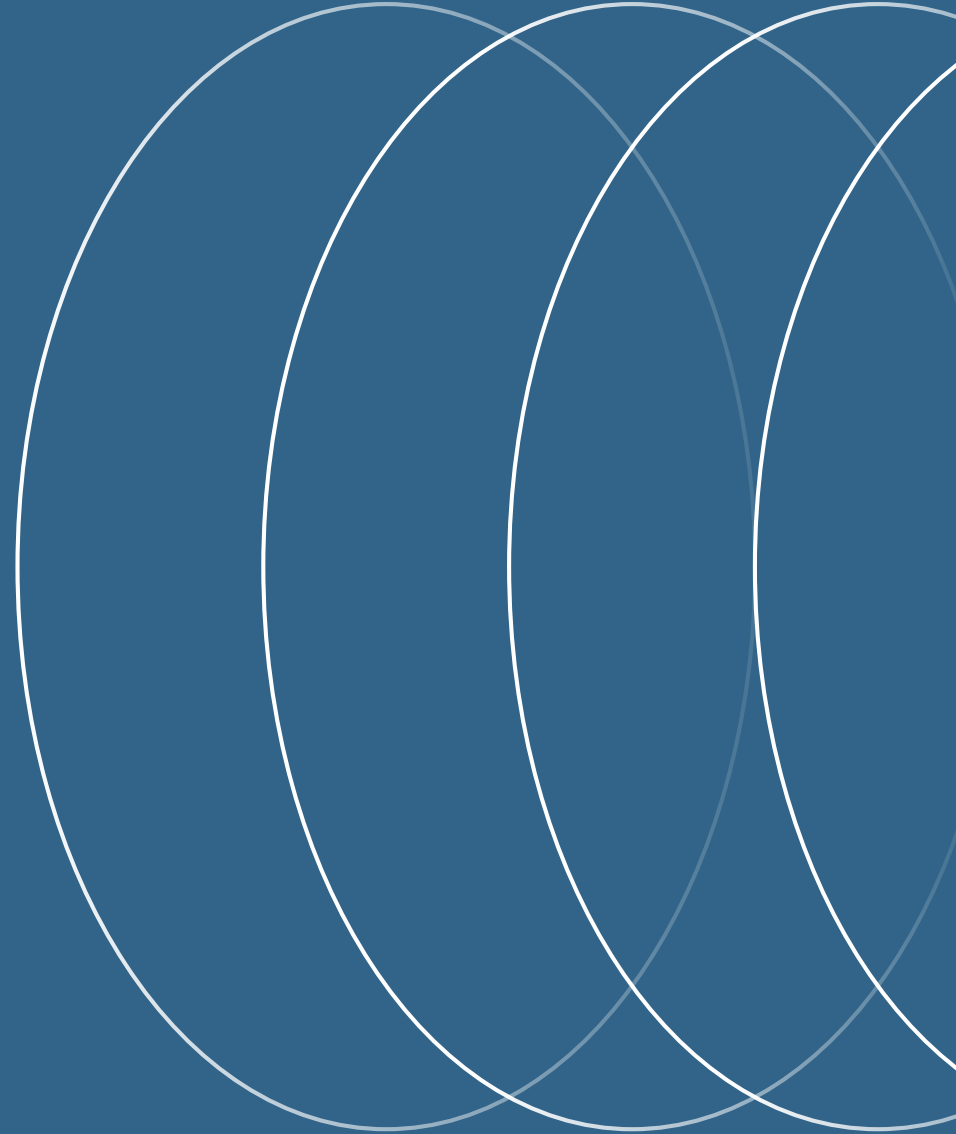
1 MILE	5 MILES	10 MILES
2,733	42,265	149,859

AVERAGE HOUSEHOLD INCOME

1 MILE	5 MILES	10 MILES
\$87,302	\$155,545	\$124,114

SITE PLAN





For further information, please contact:

David Stecker

Managing Director

+1 216 937 1965

david.stecker@jll.com