

GROUND FLOOR TOTAL = 8,131 USF

LOCATION: **COMMERCIAL OFFICE BUILDING**  
**325 SOUTH RIVER STREET**  
**HACKENSACK, NJ 07601**

CLIENT: **DSR GROUP - COMMERCIAL REALTY**

DRAWING TITLE: **EXISTING GROUND FLOOR PLAN**  
**325 SOUTH RIVER STREET**

SCALE: **3/32" = 1'-0" @ 11" x 17"**

DRAWING NO: **SK-1** 1 of 3

DATE: **APRIL 15, 2019**

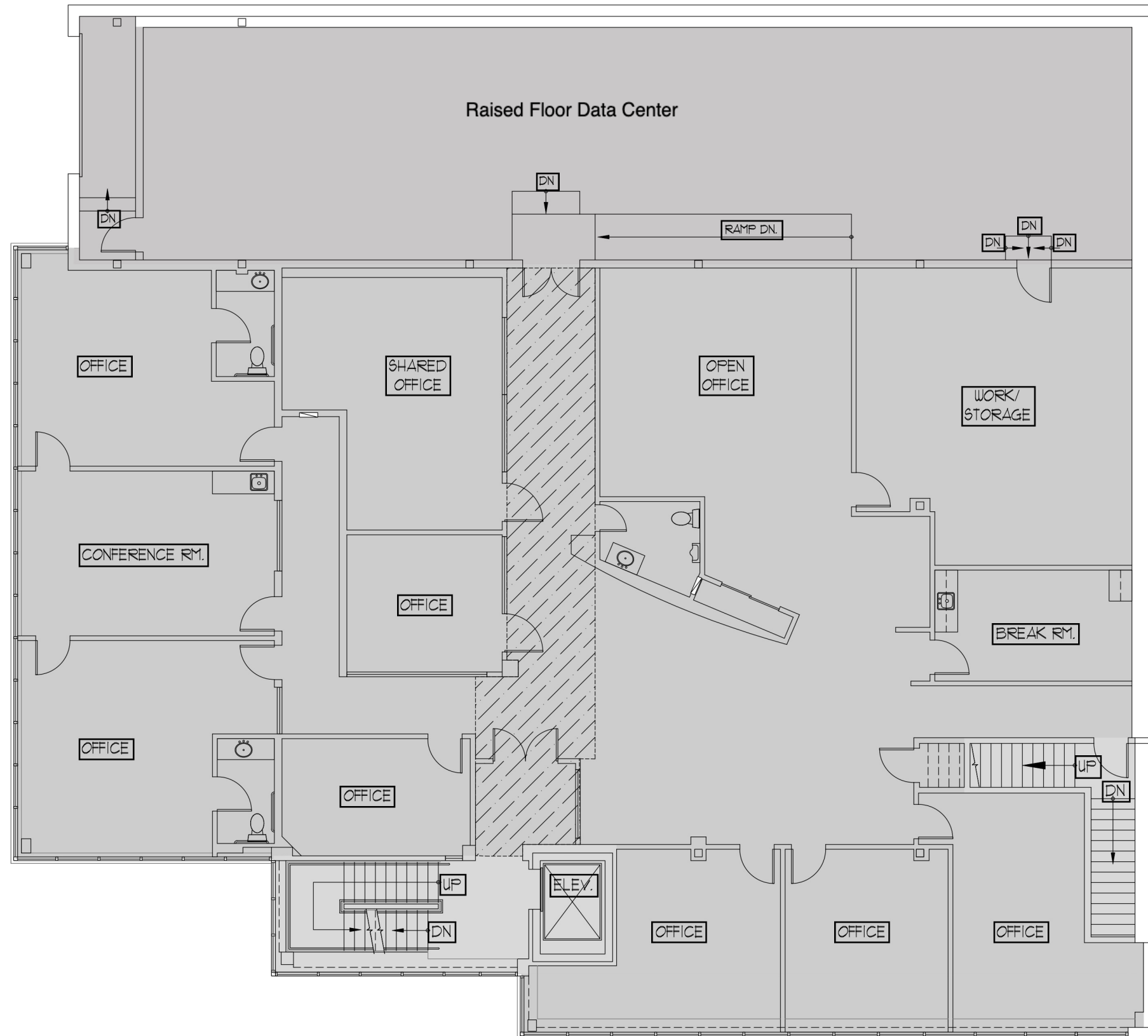
PROJECT NO: **19-025**

*Steven B. Lazarus*

STEVEN B. LAZARUS, A.I.A.  
 NJ AI-10807 CT 8999 PA RA 014920 B  
 NY 021232 MD 10946 VA 0401015129  
 NC 9107



16 HIGHWOOD AVENUE, ENGLEWOOD, NJ 07631  
 PH: 201.816.1818 FX: 201.816.0212



SECOND FLOOR TOTAL = 8,044 USF

LOCATION: **COMMERCIAL OFFICE BUILDING**  
**325 SOUTH RIVER STREET**  
**HACKENSACK, NJ 07601**

CLIENT: **DSR GROUP - COMMERCIAL REALTY**

DRAWING TITLE: **EXISTING SECOND FLOOR PLAN**  
**325 SOUTH RIVER STREET**

SCALE: **3/32" = 1'-0" @ 11" x 17"**

DRAWING NO: **SK-2 2 of 3**

DATE: **APRIL 15, 2019**

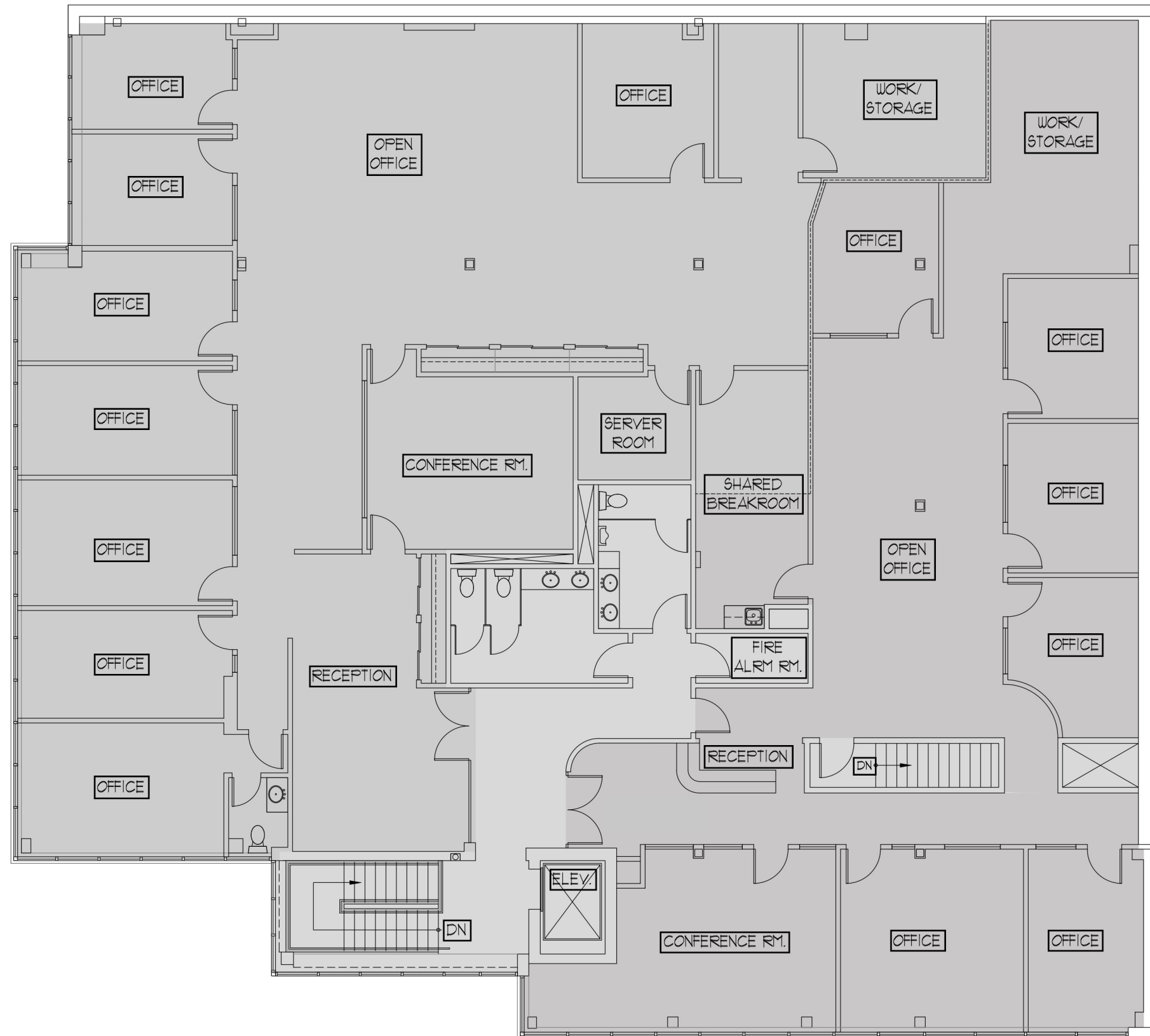
PROJECT NO: **19-025**

*Steven B. Lazarus*

STEVEN B. LAZARUS, A.I.A.  
 NJ AI-10807 CT 8999 PA RA 014920 B  
 NY 021232 MD 10946 VA 0401015129  
 NC 9107



16 HIGHWOOD AVENUE, ENGLEWOOD, NJ 07631  
 PH: 201.816.1818 FX: 201.816.0212



THIRD FLOOR TOTAL = 8,131 USF

LOCATION: **COMMERCIAL OFFICE BUILDING**  
**325 SOUTH RIVER STREET**  
**HACKENSACK, NJ 07601**

CLIENT: **DSR GROUP - COMMERCIAL REALTY**

DRAWING TITLE: **EXISTING THIRD FLOOR PLAN**  
**325 SOUTH RIVER STREET**

SCALE: **3/32" = 1'-0" @ 11" x 17"**

DRAWING NO: **SK-3** 3 of 3

DATE: **APRIL 15, 2019**

PROJECT NO: **19-025**

*Steven B. Lazarus*

STEVEN B. LAZARUS, A.I.A.  
 NJ AI-10807 CT 8999 PA RA 014920 B  
 NY 021232 MD 10946 VA 0401015129  
 NC 9107

