

OFFICE FOR LEASE

1619 N. CLYBOURN
CHICAGO, IL

JAMESON.

MATTHEW NEISTAT
COMMERCIAL BROKER
847.714.2913
MNEISTAT@JAMESONSIR.COM



EXECUTIVE SUMMARY



SPACE AVAILABLE

2,000 SF

SPACE TYPE

LOWER LEVEL OFFICE SPACE

YEAR BUILT

2002

SUBMARKET

LINCOLN PARK

FOR LEASE

\$15.00 NNN

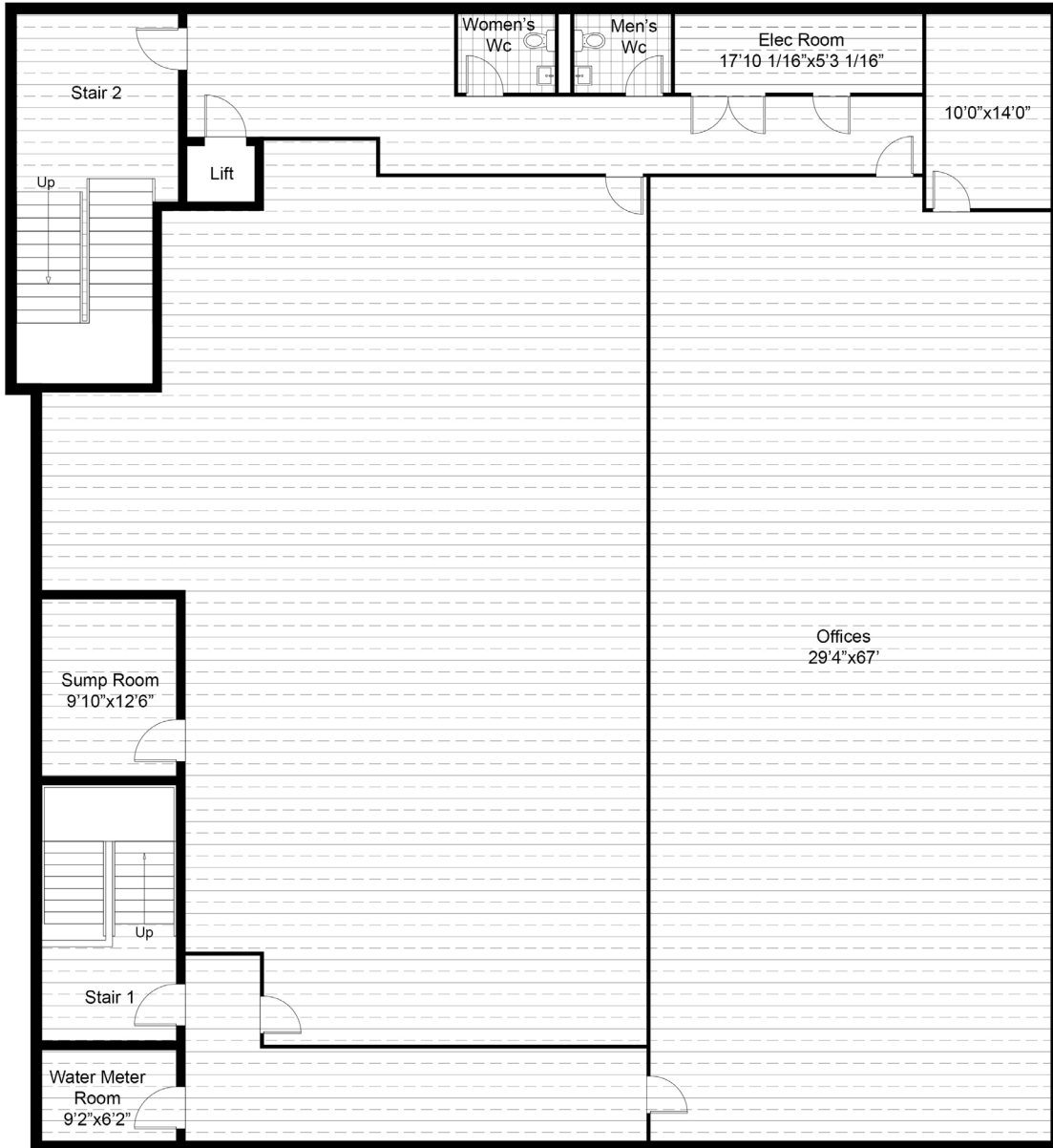
PROPERTY DESCRIPTION

Discover 2,000 square feet of premium lower-level office space in the heart of Lincoln Park. This prime location offers a prestigious address, dynamic work environment, and convenient access to public transportation and major thoroughfares. Surrounded by bustling business activity, retail, and dining options, this space is perfect for professional firms, startups, and established businesses. Take advantage of this rare opportunity at a competitive lease rate. Contact us today to schedule a viewing.

TRANSPORTATION HIGHLIGHTS

The office space at 1619 N. Clybourn in Chicago is well-connected to public transportation. It is located near the North/Clybourn Red Line station, which is only a short walk away at 1599 N. Clybourn Ave (CTA). Additionally, several CTA bus routes serve the area, including routes #8, #72, and #132, providing convenient access to various parts of the city.

OFFICE FLOOR PLAN
1619 N. CLYBOURN AVE.
CHICAGO



INTERIOR PHOTOS

1619 N. CLYBOURN AVENUE

CHICAGO



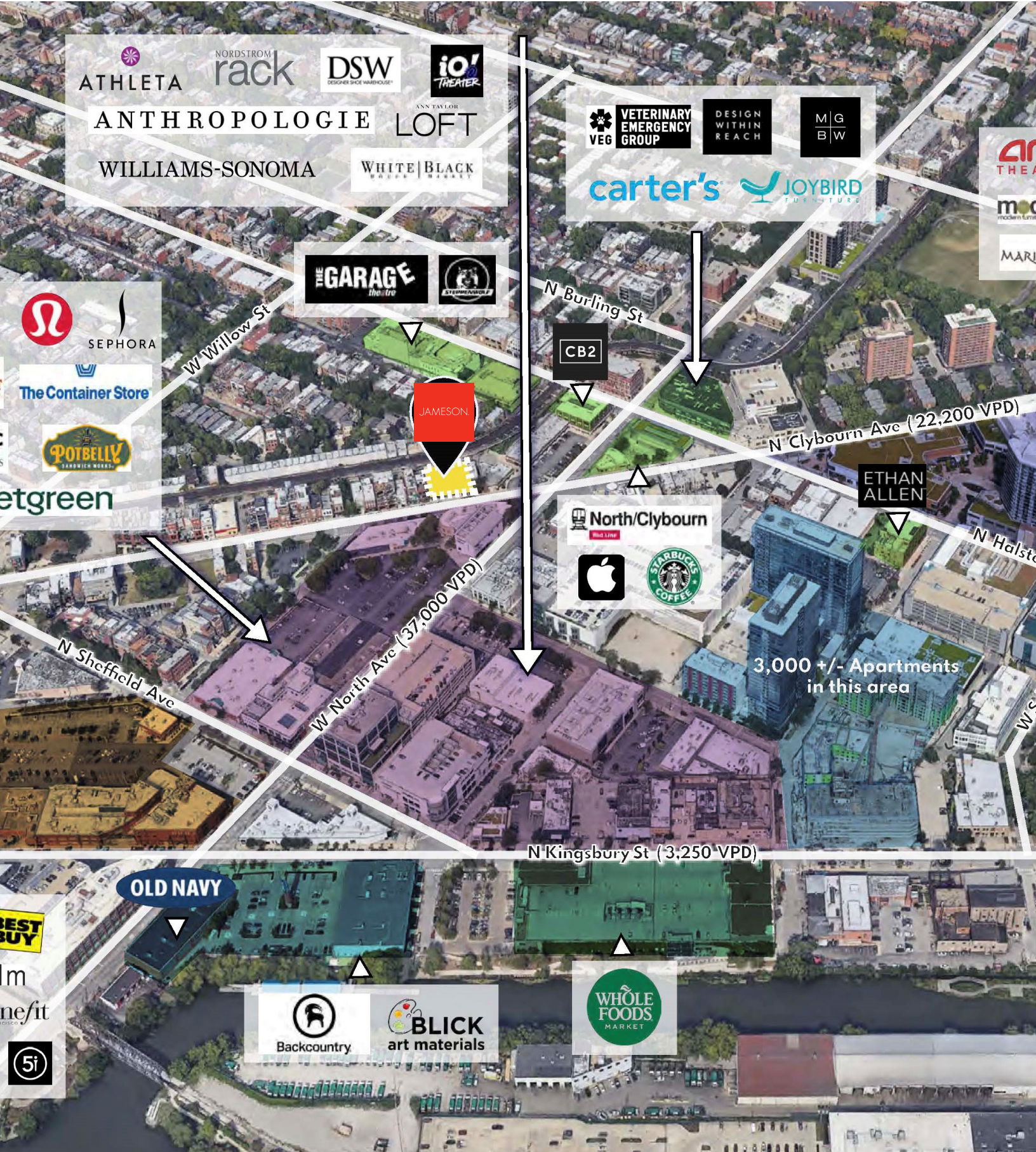
INTERIOR PHOTOS
1619 N. CLYBOURN AVENUE
CHICAGO



RETAIL MAP

1619 N. CLYBOURN AVENUE

CHICAGO



DEMOGRAPHIC INSIGHTS

1619 N. CLYBOURN AVENUE
CHICAGO

KEY FACTS

61,316

Population



1.8

Average Household Size

32.1

Median Age

\$136,282

Median Household Income

EDUCATION

2%

No High School Diploma



5%

High School Graduate



11%

Some College



83%

Bachelor's/Grad/Pr of Degree

BUSINESS



2,808

Total Businesses



38,656

Total Employees

EMPLOYMENT



89.9%

White Collar



4.2%

Blue Collar



5.9%

Services

3.1%

Unemployment Rate

INCOME



\$136,282

Median Household Income



\$99,157

Per Capita Income



\$212,756

Median Net Worth

2024 Households By Income (Esri)

The largest group: \$200,000+ (32.4%)

The smallest group: \$15,000 - \$24,999 (2.6%)

Indicator ▲	Value	Diff	
<\$15,000	7.2%	-2.8%	█
\$15,000 - \$24,999	2.6%	-3.5%	█
\$25,000 - \$34,999	3.1%	-3.3%	█
\$35,000 - \$49,999	4.9%	-4.2%	█
\$50,000 - \$74,999	7.8%	-6.6%	█
\$75,000 - \$99,999	10.7%	-1.8%	█
\$100,000 - \$149,999	17.3%	-0.2%	█
\$150,000 - \$199,999	14.0%	+4.4%	█
\$200,000+	32.4%	+18.1%	█

Bars show deviation from

Cook County

JAMESON.

MATTHEW NEISTAT

COMMERCIAL BROKER

847.714.2913

MNEISTAT@JAMESONSIR.COM