

10.07 ACRES + 70K SF BUILDING + OUTDOOR STORAGE

1001 Scott Avenue | Calverton, New York 11933

INDUSTRIAL SITE FOR SALE



Commercial



[ellimancommercial.com](https://www.ellimancommercial.com)

EXECUTIVE SUMMARY



1001 Scott Avenue | Calverton, New York 11933

| | | | |
|-------------------------|------------|-----------------------|------------------|
| Proposed Building Size: | 70,445 SF | Lot Size: | 10.07 Acres |
| Zoning: | Industrial | Outdoor Storage Size: | 65,750 SF |
| Ceiling Height: | 38 Feet | Column Spacing: | 52 ft by 50 ft |
| Loading Docks: | 21 | Parking: | 70 Vehicles |
| Annual Taxes: | TBD | Sale Price: | Price on Request |

For more details, contact Exclusive Listing Team

PRELIMINARY PLANS IN PLACE

Douglas Elliman Commercial is pleased to present 1001 Scott Avenue, Calverton for sale. This planned Class A industrial development will offer approximately 70,445 square feet of premium warehouse space on 10.07 acres within a future industrial park. Designed for efficiency and scale, the building will feature 38-foot clear ceiling heights, 52' x 50' column spacing, and permitted outdoor storage, making it ideal for logistics, manufacturing, or distribution operations.

Located near I-495, NY-27, and NY-25, the site provides direct access to the East End and Hamptons markets, with convenient reach to New York City. In January 2024, the Riverhead Town Board enacted a moratorium on industrial development outside the Calverton Enterprise Park. 1001 Scott Avenue is exempt from this moratorium, allowing the project to move forward without restriction.

Property Highlights

- Preliminary Plans In Place | Planned Class A Industrial Development-Will offer approximately 70,445 SF of warehouse space on 10.07 acres within a future industrial park.
- High-Performance Design | Features 38-foot clear ceiling heights and 52' x 50' column spacing for optimal operational efficiency.
- Permitted Outdoor Storage | Adds flexibility for logistics, manufacturing, or distribution uses.
- Strategic Location | Near I-495, NY-27, and NY-25, with direct access to the East End/Hamptons and convenient reach to NYC.

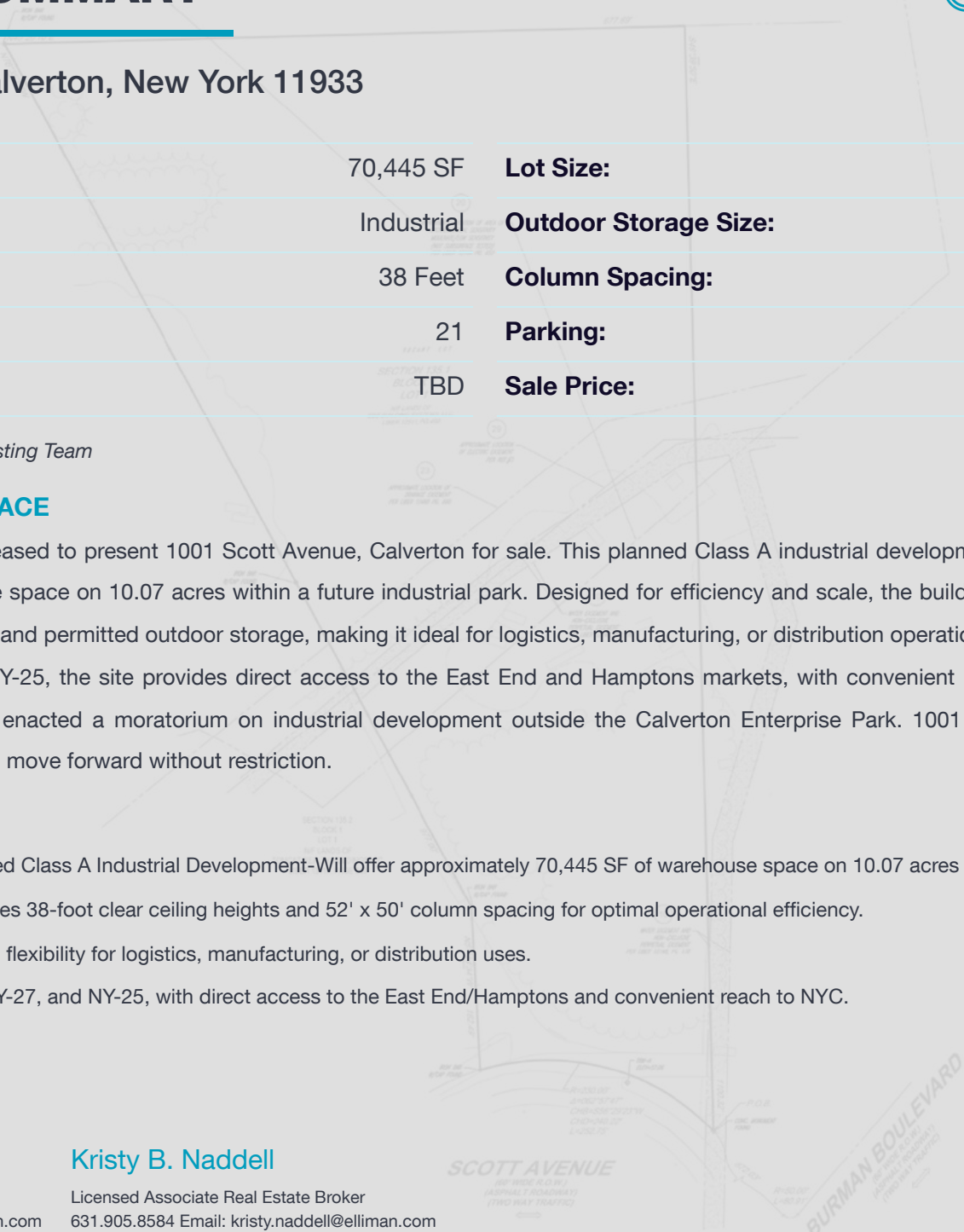
Exclusively represented by:

Michael G. Murphy

President | Commercial Division
631.858.2460 Email: michael.murphy@elliman.com

Kristy B. Naddell

Licensed Associate Real Estate Broker
631.905.8584 Email: kristy.naddell@elliman.com



OVERVIEW OF PROPERTY

1001 Scott Avenue | Calverton, New York 11933



Exclusively represented by:

Michael G. Murphy

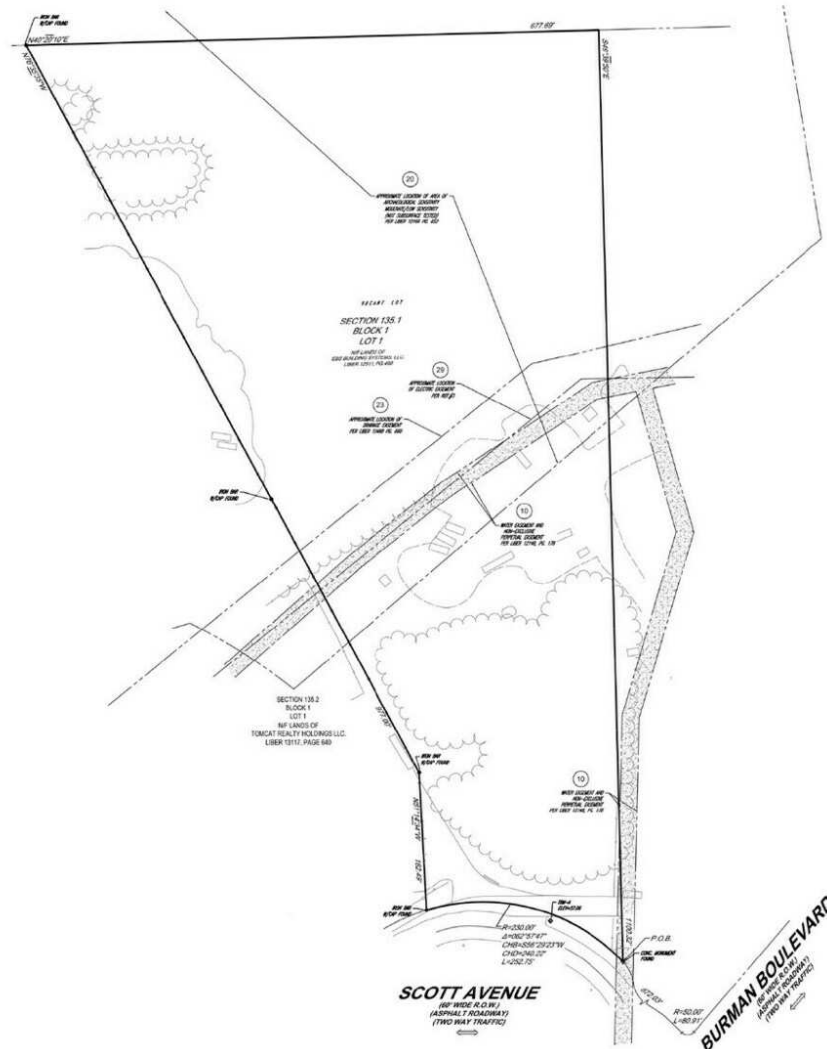
President | Commercial Division
631.858.2460 Email: michael.murphy@elliman.com

Kristy B. Naddell

Licensed Associate Real Estate Broker
631.905.8584 Email: kristy.naddell@elliman.com

PROPERTY SURVEY

1001 Scott Avenue | Calverton, New York 11933



Exclusively represented by:

Michael G. Murphy

President | Commercial Division

631.858.2460 Email: michael.murphy@elliman.com

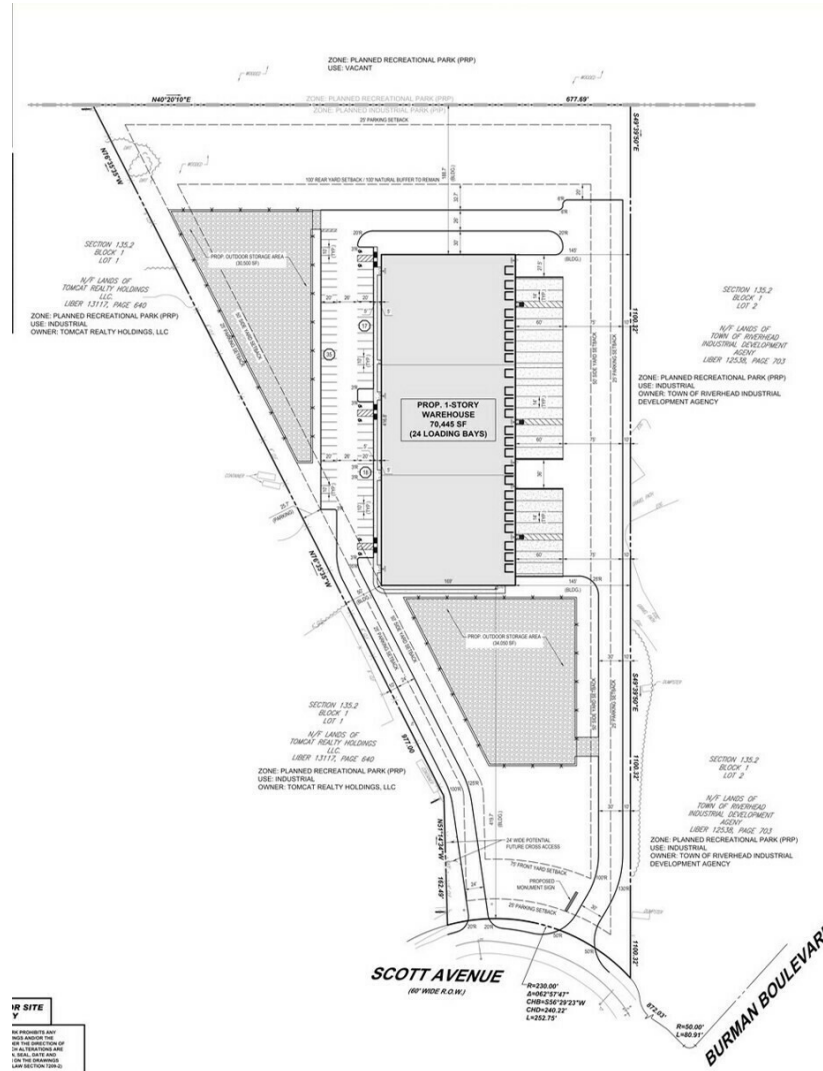
Kristy B. Naddell

Licensed Associate Real Estate Broker

631.905.8584 Email: kristy.naddell@elliman.com

PROPOSED PLANS

1001 Scott Avenue | Calverton, New York 11933



Exclusively represented by:

Michael G. Murphy

President | Commercial Division

631.858.2460 Email: michael.murphy@elliman.com

Kristy B. Naddell

Licensed Associate Real Estate Broker

631.905.8584 Email: kristy.naddell@elliman.com

RETAILER MAP

1001 Scott Avenue | Calverton, New York 11933



Exclusively represented by:

Michael G. Murphy

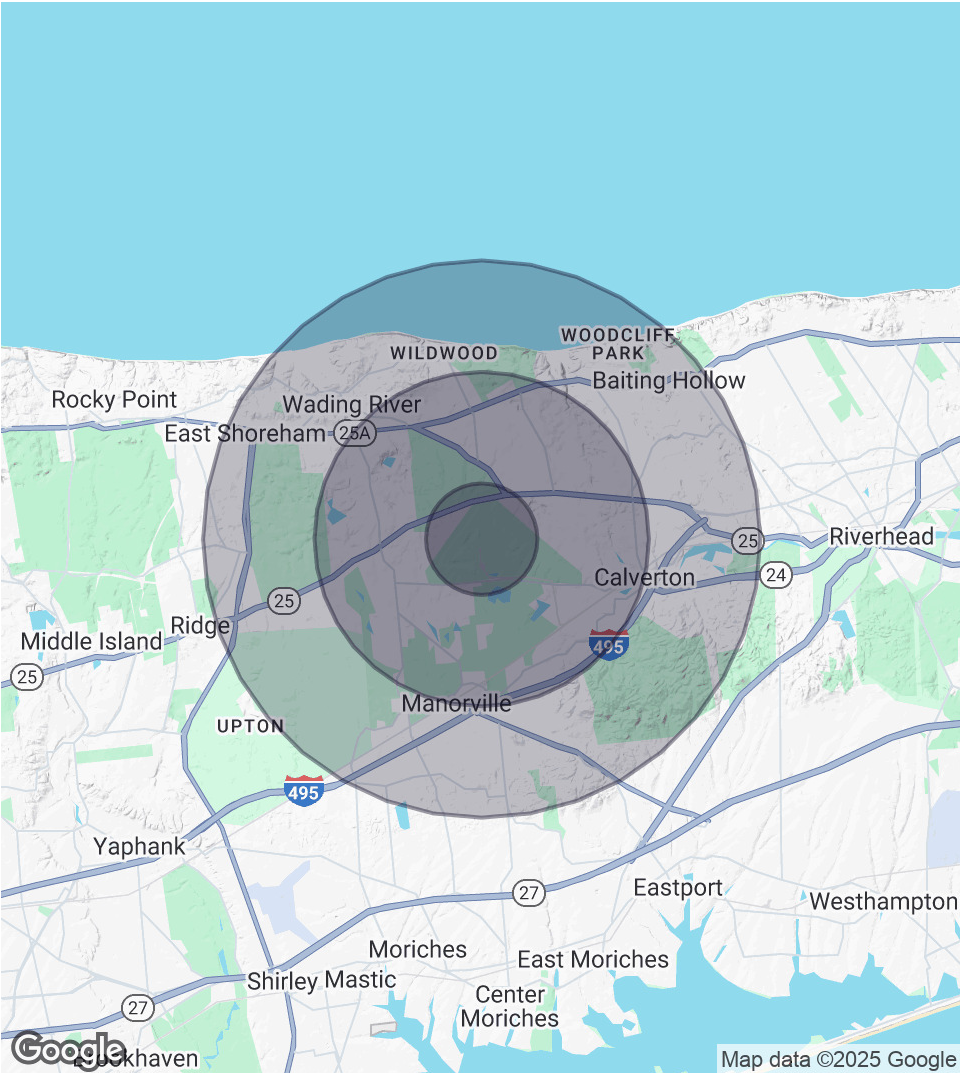
President | Commercial Division
631.858.2460 Email: michael.murphy@elliman.com

Kristy B. Naddell

Licensed Associate Real Estate Broker
631.905.8584 Email: kristy.naddell@elliman.com

DEMOGRAPHICS MAP & REPORT

1001 Scott Avenue | Calverton, New York 11933



1 Mile Radius

Population
59
Households
20
Average HH Income
\$189,569

3 Miles Radius

Population
7,511
Households
2,753
Average HH Income
\$163,809

5 Miles Radius

Population
26,303
Households
10,087
Average HH Income
\$153,844

Exclusively represented by:

Michael G. Murphy

President | Commercial Division
631.858.2460 Email: michael.murphy@elliman.com

Kristy B. Naddell

Licensed Associate Real Estate Broker
631.905.8584 Email: kristy.naddell@elliman.com

1001 Scott Avenue | Calverton, New York 11933

EXCLUSIVELY REPRESENTED BY:



Michael G. Murphy

President | Commercial Division

631.858.2460

Email: michael.murphy@elliman.com



Kristy B. Naddell

Licensed Associate Real Estate Broker

631.905.8584

Email: kristy.naddell@elliman.com



550 Smithtown Bypass Suite 117
Smithtown, NY 11787
631.858.2405
ellimancommercial.com

THE PROPERTY CONTAINED WITHIN THIS DOCUMENT IS BEING EXCLUSIVELY REPRESENTED BY DOUGLAS ELLIMAN REAL ESTATE COMMERCIAL DIVISION, 550 SMITHTOWN BYPASS STE. 117 SMITHTOWN, NY 11787 631.858.2405
© 2023 DOUGLAS ELLIMAN COMMERCIAL OF LI, LLC. ALL MATERIAL PRESENTED HEREIN IS INTENDED FOR INFORMATION PURPOSES ONLY. WHILE THIS INFORMATION IS BELIEVED TO BE CORRECT, IT IS REPRESENTED SUBJECT TO ERRORS, OMISSIONS, CHANGES OR WITHDRAWAL WITHOUT NOTICE. ALL PROPERTY INFORMATION, INCLUDING, BUT NOT LIMITED TO SQUARE FOOTAGE, ROOM COUNT, ZONING IN THE LISTING SHOULD BE VERIFIED BY YOUR OWN ATTORNEY, ARCHITECT OR ZONING EXPERT. IF YOUR PROPERTY IS CURRENTLY LISTED WITH ANOTHER REAL ESTATE BROKER, PLEASE DISREGARD THIS OFFER. IT IS NOT OUR INTENTION TO SOLICIT THE OFFERINGS OF OTHER REAL ESTATE BROKERS. WE COOPERATE WITH THEM FULLY. EQUAL HOUSING OPPORTUNITY.



We Are Commercial Real Estate

550 Smithtown Bypass Suite 117
Smithtown, NY 11787
631.858.2405
ellimancommercial.com

Commercial real estate involves more than just property listings. To get the most effective results, you need to partner with a company that has a full complement of services and an in-depth team of professionals to help with all your needs. Douglas Elliman's team of commercial real estate experts is committed to unrivaled performance standards when working with tenants, investors, purchasers and owners. We represent all major property types including office, industrial, retail, apartment and land. We treat each assignment with commitment and focus, from a single transaction in a local market to national and multi-market assignments. We help negotiate contracts, coordinate construction and provide both property management as well as ongoing advisory service to satisfy your changing real estate needs. Our breadth of market knowledge, unprecedented network and use of innovative technology extend to all types of property transactions. For information on our services please contact us today.