

Office for Lease

2721 W. 6th Street, Suite B Lawrence, Kansas

Centrally located and easily accessible

This office building is in a prime location on 6th Street with visibility to more than 27,325 vehicles per day. The property sits just east of Lawrence Avenue with easy access to Highway 59 and I-70. The available suite is an excellent small professional office with competitive pricing.



Allison Vance Moore S10R

Senior Vice President
+1 785 865 3924
allison.moore@colliers.com

Colliers Lawrence

3705 Clinton Parkway, Suite 201
Lawrence, Kansas
+1 785 865 5100
colliers.com/lawrence

Space Available 1,000 SF

Zoning CS

Suite Features

- Ground-floor suite
- Two private offices
- Reception/waiting area
- Conference room

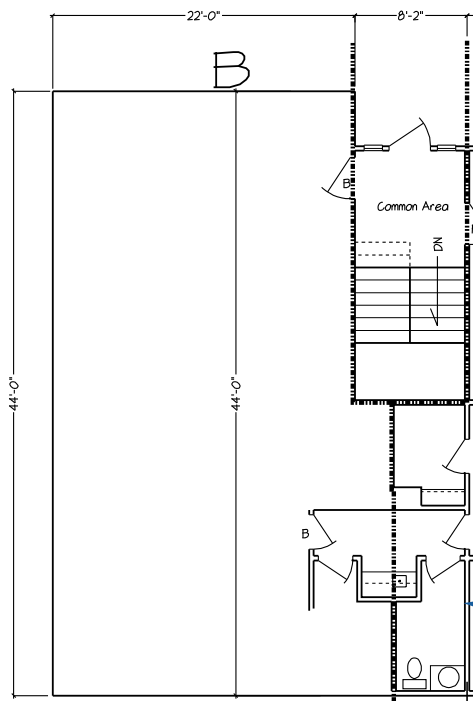
Lease Rate \$1,500 monthly, gross (plus utilities)

Improvements Negotiable for a qualified tenant and term

Site Features Ample parking, common-area entrance, common-area restroom, and exterior signage

For Lease

2721 W. 6th Street, Suite B
Lawrence, Kansas



Allison Vance Moore SICR
Senior Vice President
+1 785 865 3924
allison.moore@colliers.com

Colliers Lawrence
3705 Clinton Parkway, Suite 201
Lawrence, Kansas
+1 785 865 5100
colliers.com/lawrence

This document/e-mail has been prepared by Colliers for advertising and general information only. Colliers makes no guarantees, representations or warranties of any kind, expressed or implied, regarding the information including, but not limited to, warranties of content, accuracy and reliability. Any interested party should undertake their own inquiries as to the accuracy of the information. Colliers excludes unequivocally all inferred or implied terms, conditions and warranties arising out of this document and excludes all liability for loss and damages arising there from. This publication is the copyrighted property of Colliers and/or its licensor(s). © 2024. All rights reserved. This communication is not intended to cause or induce breach of an existing listing agreement.

