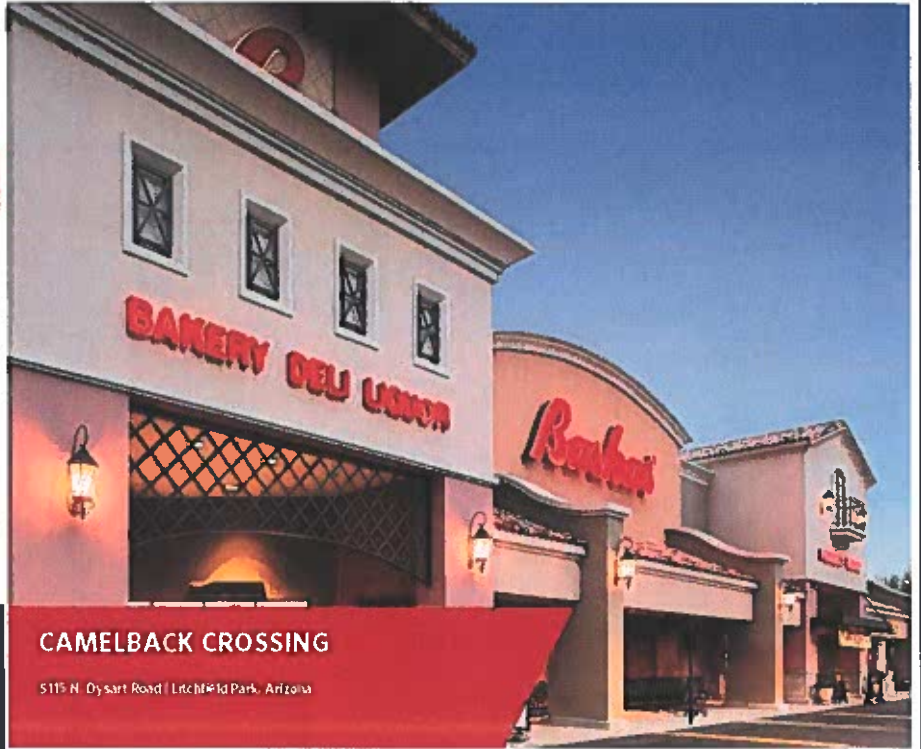


Camelback Crossing

5115 North Dysart Rd. (NEC Dysart Rd. & Camelback Rd)
Litchfield Park, AZ 85340

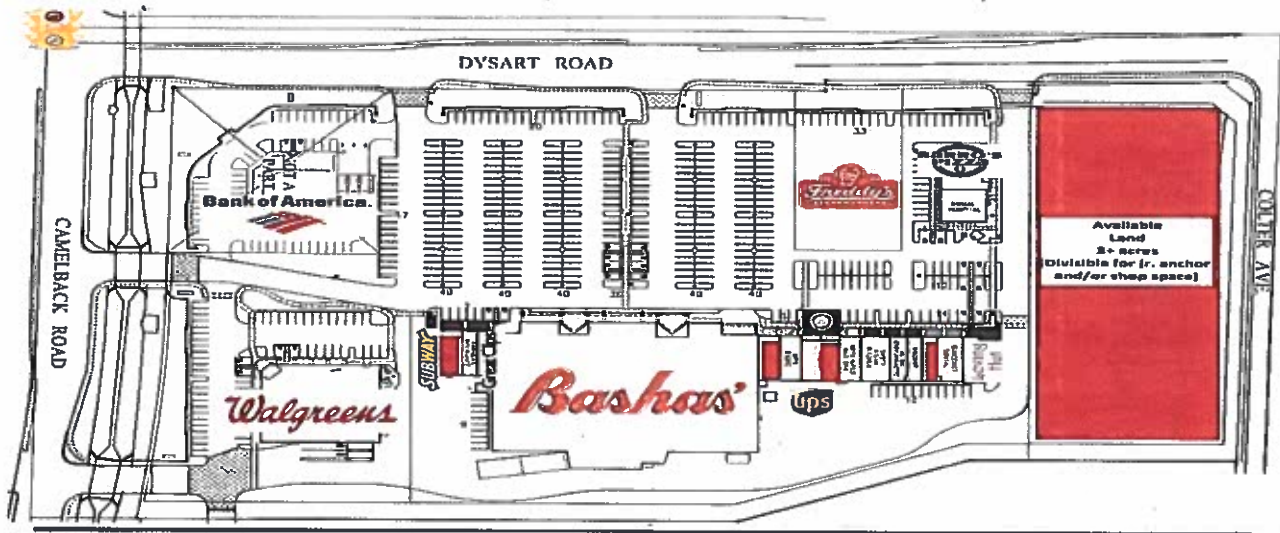


Demographics (Source: ERSI 2014)

	1 mile	3 mile	5 mile
Population:	11,434	68,320	141,658
Median Inc.	\$ 68,365	\$ 67,344	\$ 60,048
Ave. Income	\$ 87,635	\$ 84,469	\$ 75,681

CAMELBACK CROSSING
5115 N. Dysart Road | Litchfield Park, Arizona

**High quality Basha's Supermarket & Walgreens anchored center
3 + acres of land for junior anchor expansion & restaurants
Major intersection**

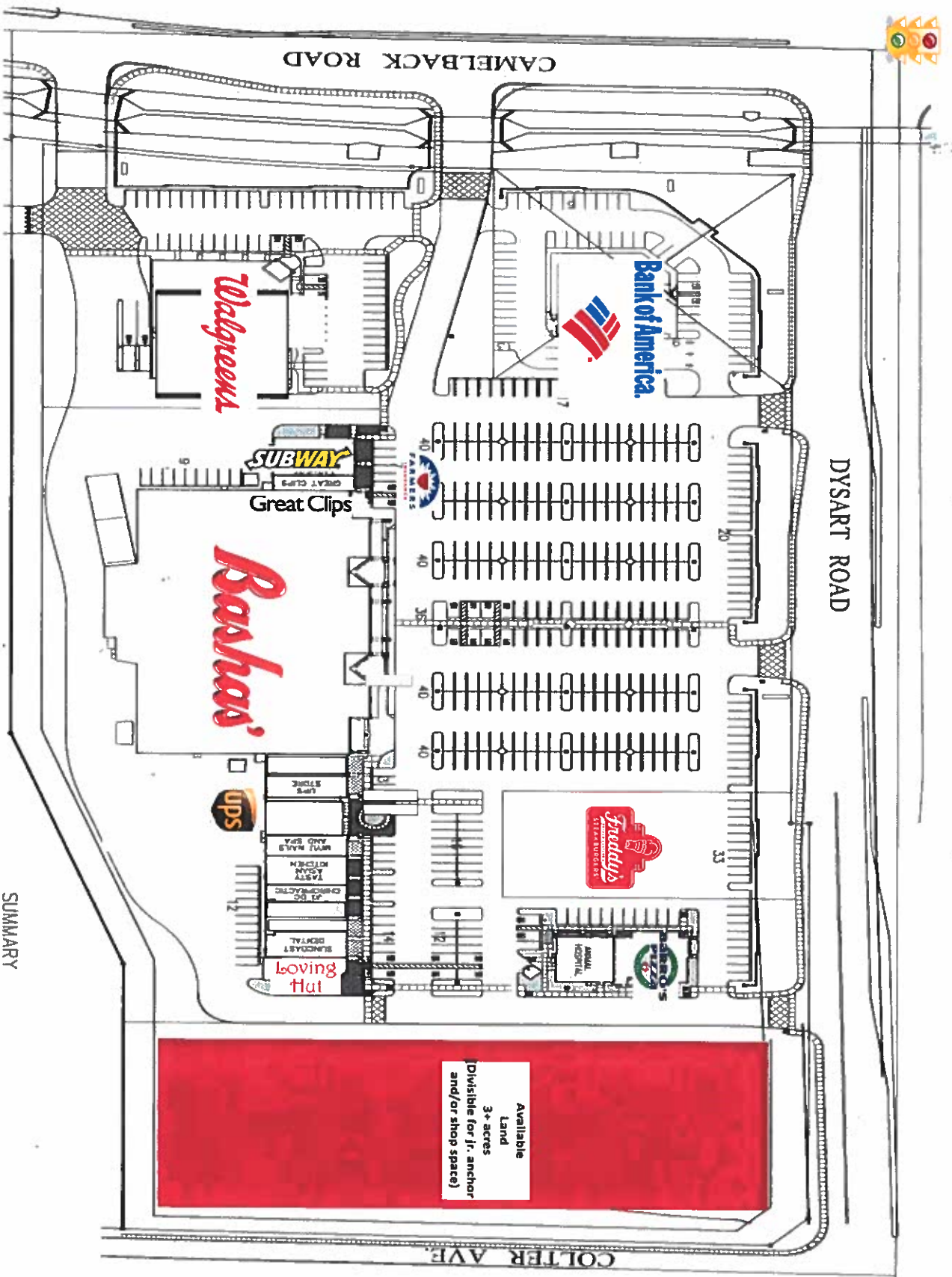


Contact: Scott Sterlekar - RA Centers
23901 Calabasas Rd. #1084, Calabasas, CA 91302
Office: 818/591-3800 Cell: 818/370-3710 scott@racenters.com

The above information is from sources deemed reliable. Please make your own independent investigation as to its accuracy.

5115 N. Dysart Rd. (NEC Dysart Rd. & Camelback Rd.) Litchfield Park, AZ 85340

CamelBack Crossing



SUMMARY

Contact: Scott Sterlekar (RA Centers)

Office: 818/591-3800 Cell: 818/370-3710 scott@racenters.com

The above information from sources deemed reliable. Please make your own independent investigation as to its accuracy.