

OFFICE SPACE FOR LEASE

2020 TERRY STREET, SUITES A & B



OFFICE SPACE FOR LEASE: SUITE A - 2,226 SF  
SUITE B - 2,180 SF

**RE/MAX ELEVATE**  
724 Main Street  
Louisville, CO 80027



*PRESENTED BY:*

**KEITH KANEMOTO, SIOR**  
Broker Associate  
cell: (303) 472-2222  
keith@kanemoto.com

**KEN KANEMOTO**  
CCIM  
office: 303-589-7770  
Ken@longmontcommercial.com

The calculations and data presented are deemed to be accurate, but not guaranteed. They are intended for the purpose of illustrative projections and analysis. The information provided is not intended to replace or serve as substitute for any legal, accounting, investment, real estate, tax or other professional advice, consultation or service. The user of this software should consult with a professional in the respective legal, accounting, tax or other professional area before making any decisions.



## Property Summary

Lease Rate:	\$4,000/month MG
Suite A Size:	2,226 SF
Suite B Size:	2,180 SF
Building SF:	8,904
Rentable SF:	8,904
Year Built:	1997
County:	Boulder
Zoning:	Mixed Use Corridor

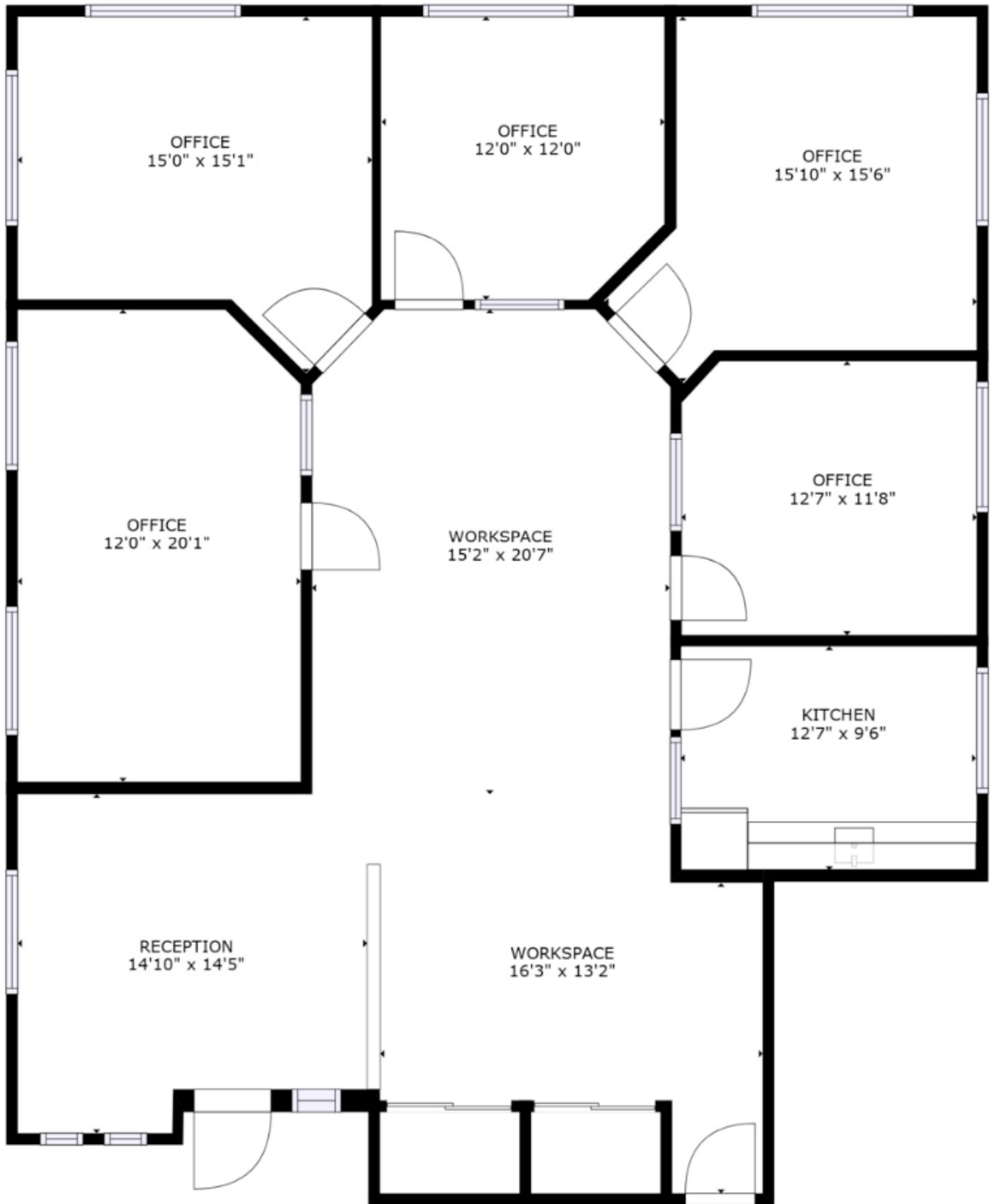
## Property Overview

Beautiful, professional, main-level office suites in attractive, all-brick office building. Suite A consists of a reception area, 3 private offices and a conference room or 4 offices, bullpen area, and a break room. Suite B consists of reception area, 5 private offices, a conference room, bullpen area, and a break room. This three-building, north Longmont office park is well-maintained and quiet. Plenty of natural light. Private parking. Close to restaurants, parks, amenities, and more... Tenant is responsible for interior janitorial.

## Location Overview

Suite A: <https://rem.ax/2020TerryA>

Suite B: <https://rem.ax/2020TerryB>

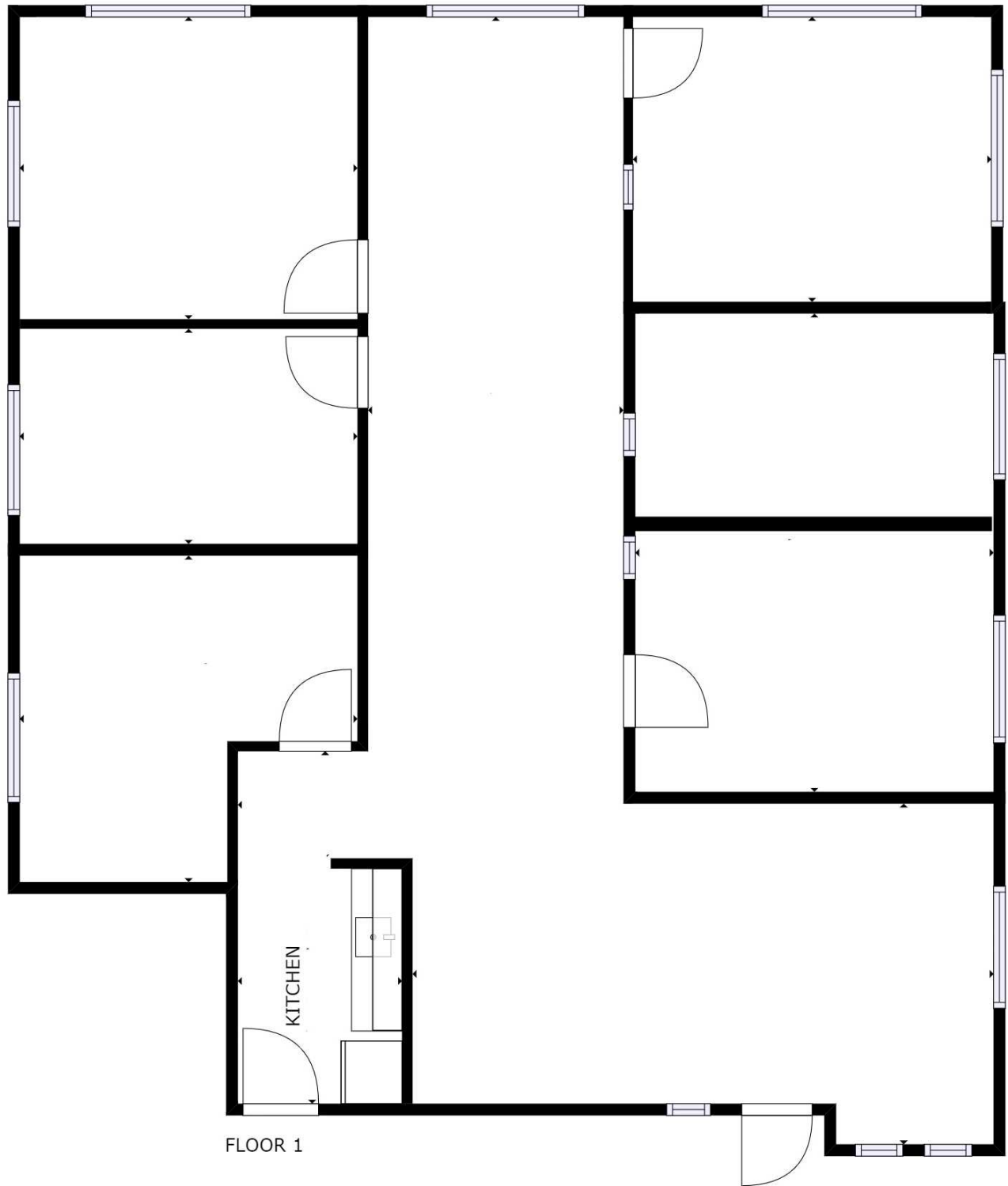


# Suite A

[Click Here for Virtual Tour - Suite A](#)

SIZES AND DIMENSIONS ARE APPROXIMATE, ACTUAL MAY VARY.

# SUITE B - FLOOR PLAN



[Click Here for Virtual Tour - Suite B](#)

SIZES AND DIMENSIONS ARE APPROXIMATE, ACTUAL MAY VARY.

