

FOR LEASE

Fountainview Plaza



2621 Muegge Rd., St. Charles, MO 63303

- 1,428 - 5,458 square feet of retail space for lease.
- Well-maintained property.
- Excellent visibility from Muegge Rd.
- Approximately 25,802 vehicles drive by per day.
- Ample parking.
- Easy access to 1-70 and Mexico Rd.
- White box conditions.
- Flexible units.

This information contained here in is warranted, although is has been obtained from the owner of the property or from other sources that we deem reliable. It is subject to change without notice. Owner and broker make no representation as to the environmental condition of the property and recommend independent investigation.



COMMERCIAL • INDUSTRIAL • INVESTMENTS • LAND DEVELOPMENT • MANAGEMENT

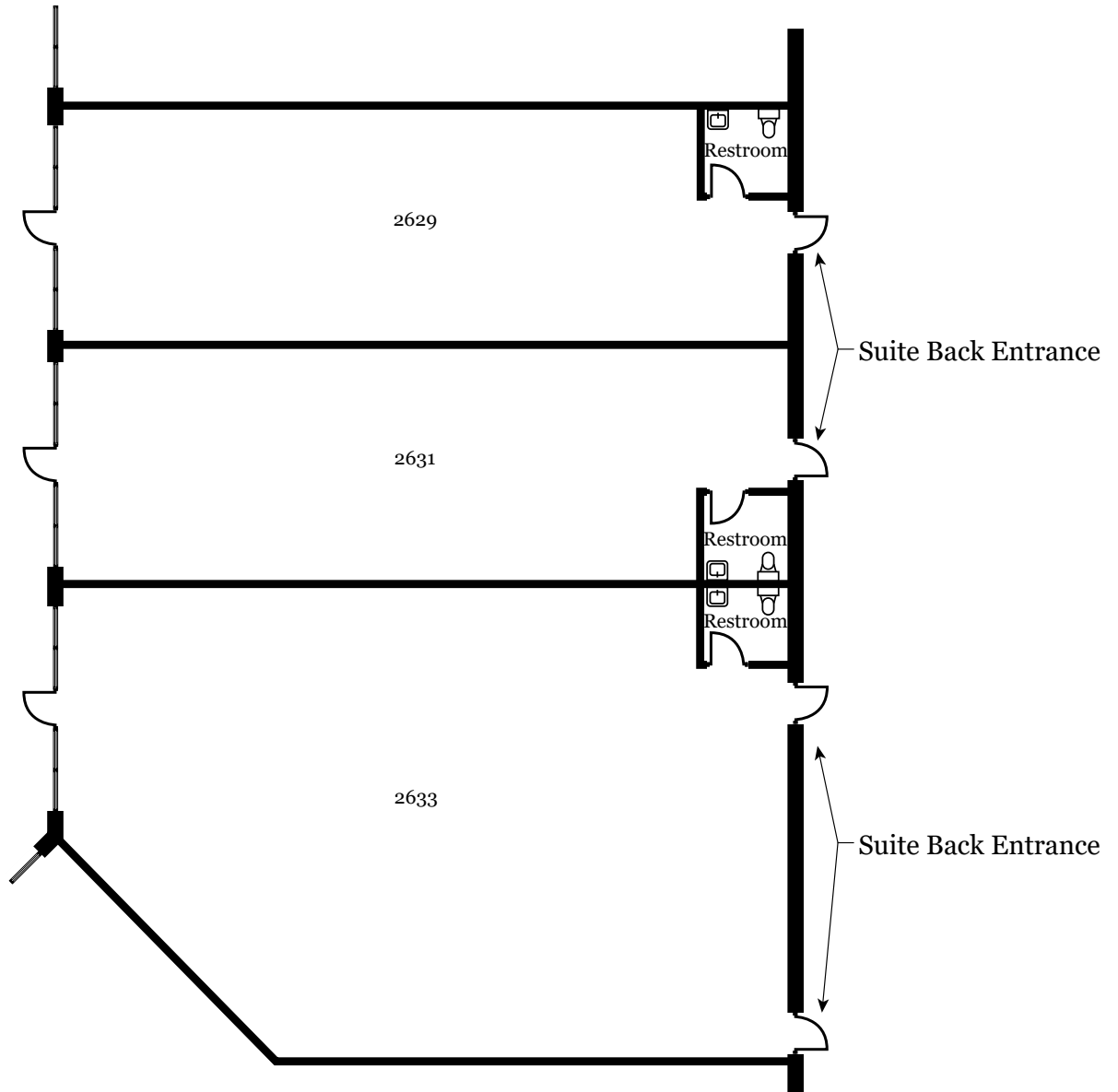
11555 Concord Village Ave. St Louis, Missouri 63128

Office: 314-842-1800 Fax 314-842-1802 www.vossprop.com



COMMERCIAL • INDUSTRIAL • INVESTMENTS • LAND DEVELOPMENT • MANAGEMENT
 11555 Concord Village Ave. St Louis, Missouri 63128
 Office: 314-842-1800 Fax 314-842-1802 www.vossprop.com

Not to scale verify in field.



Fountainview Plaza
Suite 2629 - 2631 - 2633
1,428 - 2,602 RSF
10/28/2021