



EASTWOOD

eastwoodrealty.com

FOR SALE
6920 Winton St.
Prime 5-Lot Commercial Tract

ELEVATE YOUR PORTFOLIO AT WINTON ST.

Positioned in Houston's historic Southland neighborhood, 6920 Winton Street presents a rare commercial opportunity with nearly an entire city block at your command. Formerly the home of Frank's Plumbing Co. Inc., this expansive tract brings with it decades of local legacy and an unmatched canvas for your next venture.

Blending scale, visibility, and central access, the Winton property offers investors, developers, and owner-users a unique chance to secure prime real estate just minutes from the Texas Medical Center, University of Houston, and Downtown.



50
1
103 103
50

50
2
103 103
50

100
3
103 206

150
4
75 103

103
**5 TOTAL
LOTS**
150 250

103
5
75 103



HOUSTON FOOTPRINT



Prime Commercial Holding

From multiple contiguous lots to flexible redevelopment potential, the property stands as a powerful foundation for a variety of uses—industrial, flex space, mixed-use, or a custom headquarters. Its Southland location combines neighborhood charm with citywide connectivity, giving any future project immediate strategic advantage.

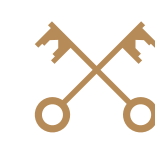
Connectivity that Drives Value

Location matters, and Winton delivers. Just minutes from the Texas Medical Center, University of Houston, Downtown, and key freeways like 288 and I-45, this property sits at the center of Houston's ongoing growth. Whether you envision logistics, creative flex space, or a high-visibility redevelopment, the Southland address ensures your project benefits from constant demand and citywide connectivity.





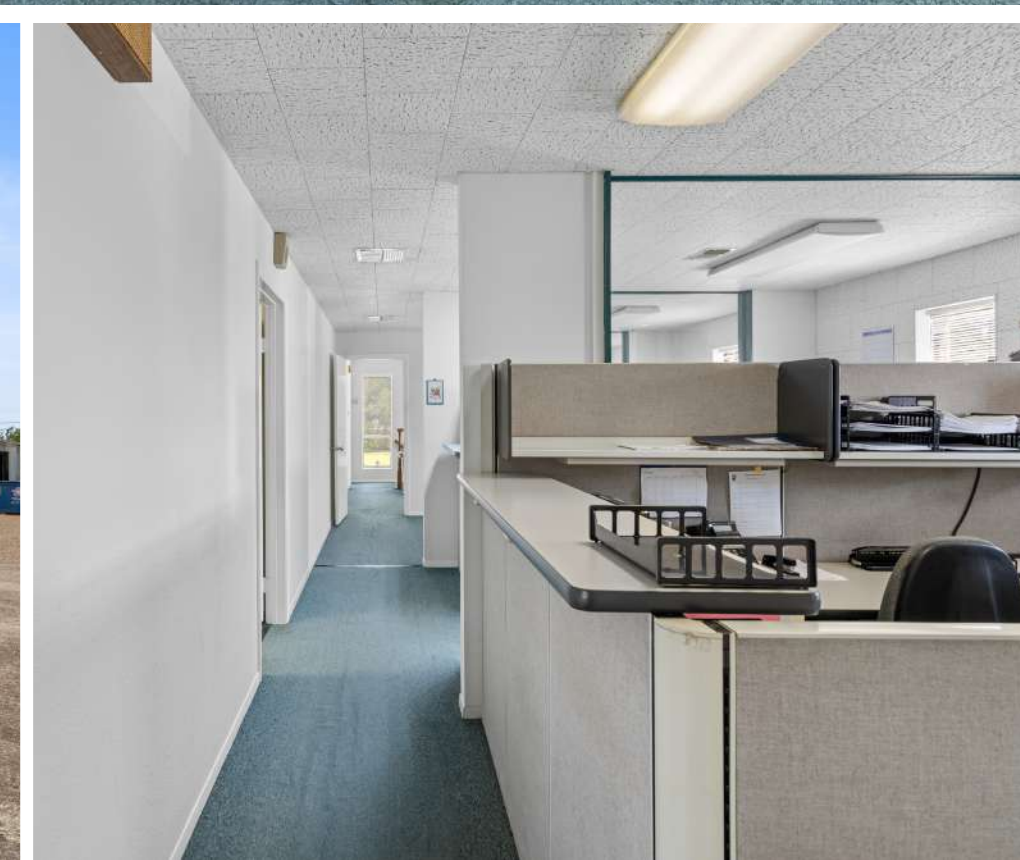
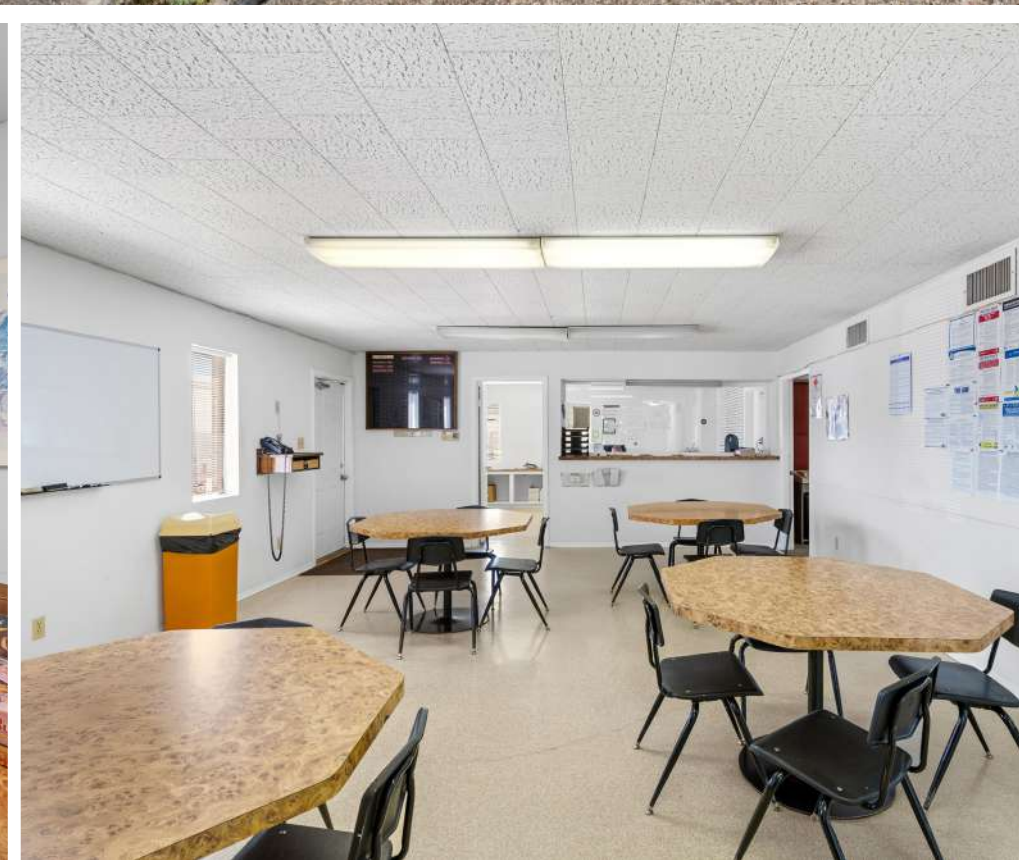
PROPERTY FEATURES



INVESTMENT *Potential*

At an asking price of \$1,984,050, this property offers the kind of footprint rarely seen inside the loop. With Houston's East End and Medical Center sub-markets continuing to expand, the scale and location of 6920 Winton Street provide strong long-term appreciation and attractive redevelopment pathways. For investors looking for a block-sized opportunity in the path of growth, Winton checks every box.

- Nearly a full city block of land in Southland
- Prime Houston location with excellent visibility
- Flexible redevelopment potential (commercial, mixed-use, flex space)
- Minutes from Texas Medical Center & University of Houston
- Offered at \$1,984,050
- 5 Total Lots





CONNECTED LOCATION

288 Highway: 4 Minutes
Texas Southern Univ: 10 Minute
Downtown Houston: 15 Minutes



FOR SALE INFO CONTACT

LOREN MINER

loren@eastwoodrealty.com
626.826.5906

BOBBY TYSON

bobby@eastwoodrealty.com
832.721.5131

eastwoodrealty.com