

14,840 SF Industrial Warehouse

6901 & 6844 Kingessing Ave
Philadelphia, PA 19142

**Approximately 14,840 SF of Industrial Warehouse Space
Available in Philadelphia, PA.**



**6901 Kingessing Ave
Philadelphia, PA 19142**

- 9,449 SF
- +/- 2 acres
- 3 drive-in doors
- Fenced
- Partially paved

**6844 Kingessing Ave
Philadelphia, PA 19142**

- 5,400 SF
- +/- 0.56 acres
- 1 drive-in doors
- Fenced
- Partially paved

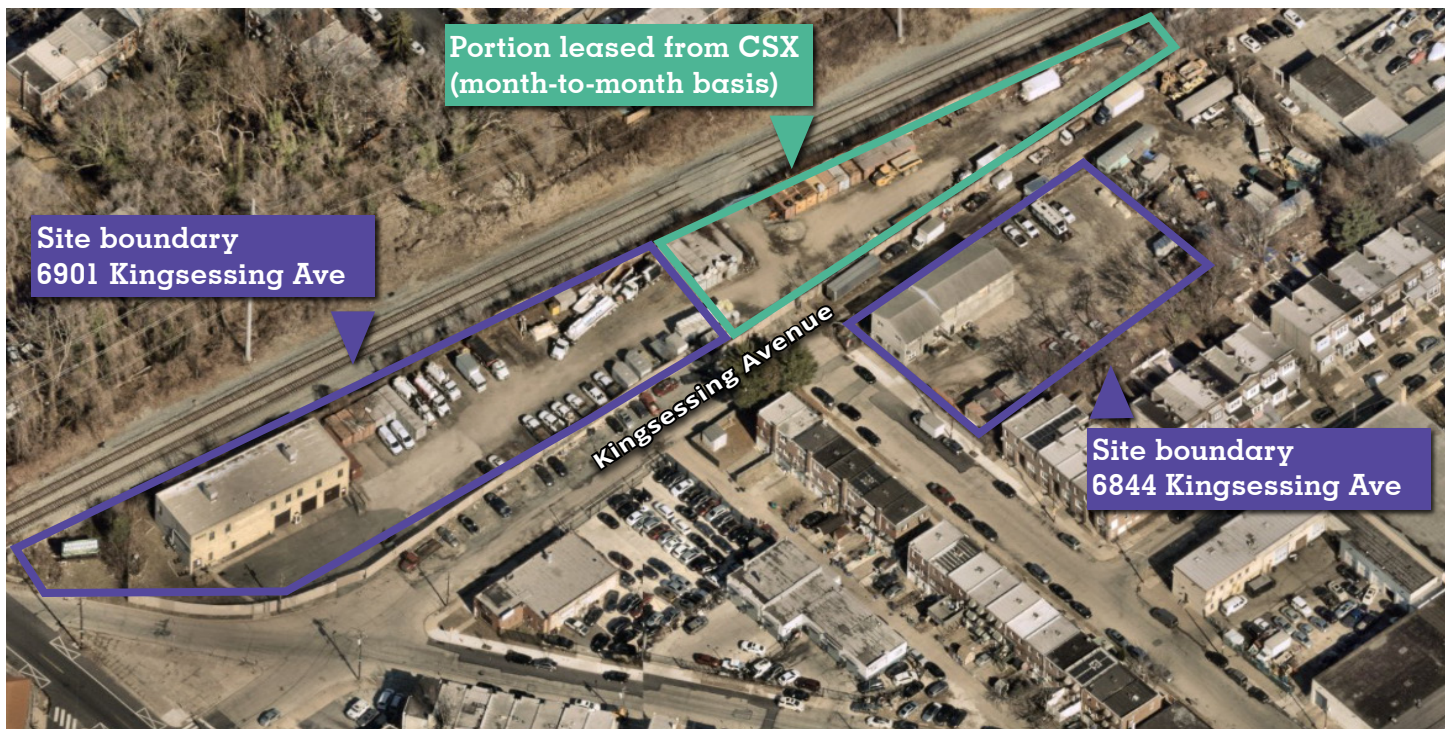
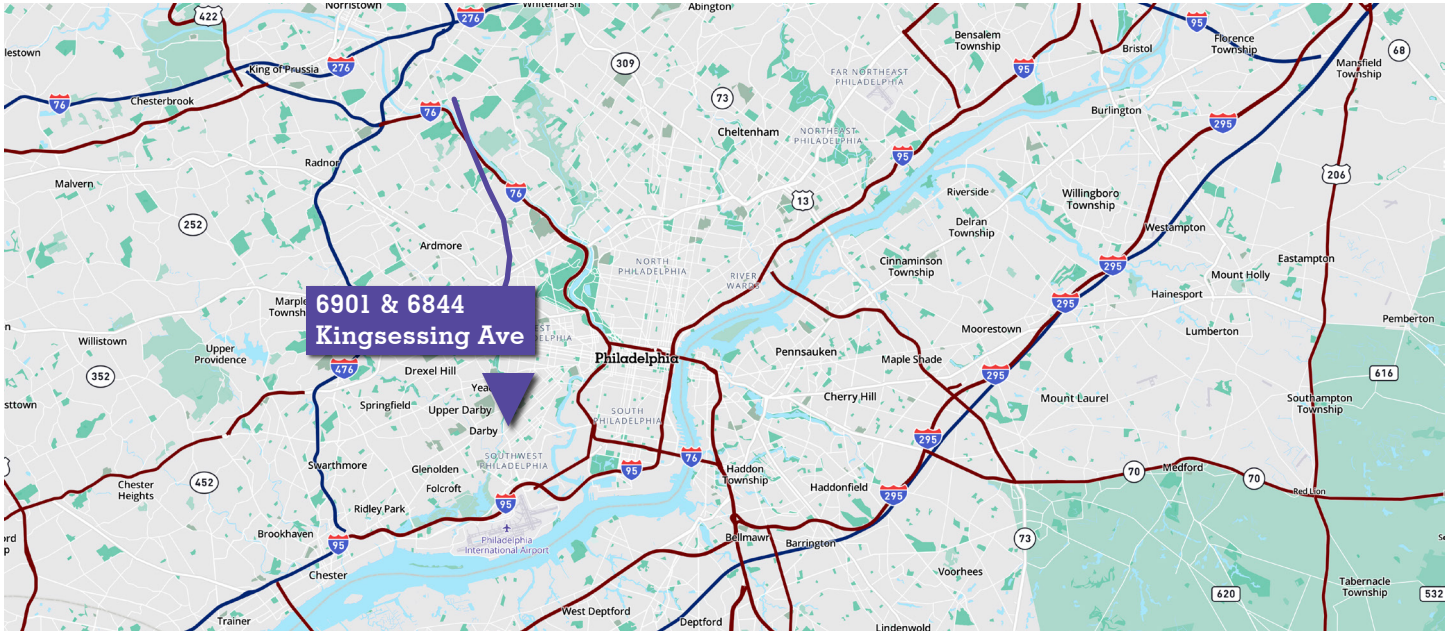
**Get more
information**

David Smith, Principal
M +1 609 314 4864
david.smith@avisonyoung.com

William Ciarlone, Associate
M +1 484 889 8491
william.ciarlone@avisonyoung.com

PROPERTY MAP

QUICK ACCESS TO I-476 & I-95



**Get more
information**

David Smith, Principal
M +1 609 314 4864
david.smith@avisonyoung.com

William Ciarlone, Associate
M +1 484 889 8491
william.ciarlone@avisonyoung.com