

This 1890 building features ~48,000 SF on 5 floors + a basement. The exterior has been immaculately restored including tuck-pointing, new roof structure & roof & new approved historic windows. Ideal for a hotel, multifamily, condos, or mixed use development. The lot accommodates ~14 parking spaces.



1500 St. Louis Avenue | West Bottoms | Kansas City, MO
48,000 SF Historic Building Offered at \$3,999,995



High Ceilings! 11' - 14' Varying by Floor
All Windows are Operable for Multifamily Use
Each Floor ~ 8,500 Usable SF
2 Elevator Shafts
Windows Can Be Added to West Side
Lower Level Basement Could Be Converted to Parking Garage

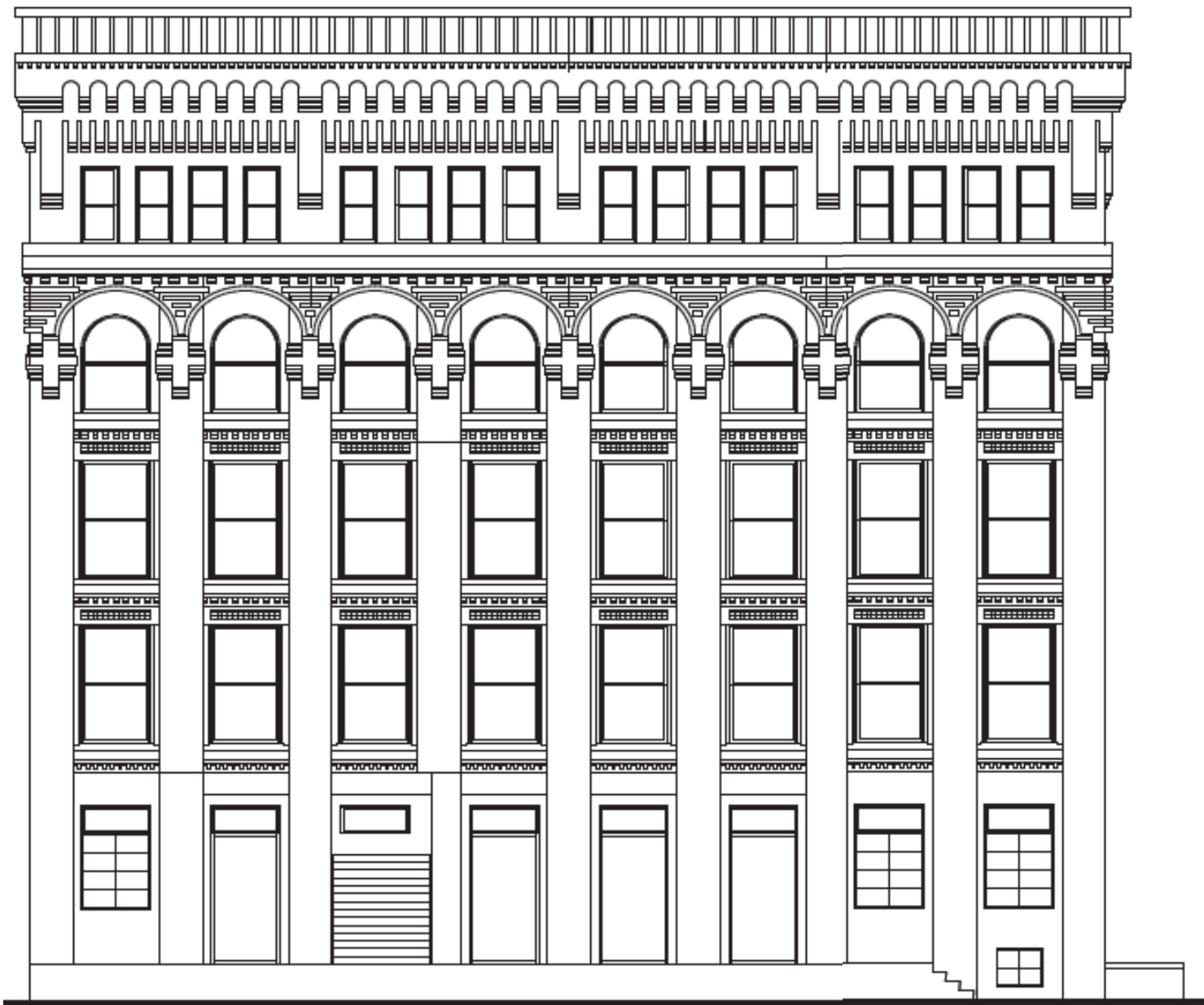
Chris Smart
Chris.Smart@Compass.com
M: (913) 226-4672
www.Haith.com



David Smart
DSmart@Haith.com
O: (913) 888-3456
M: (913) 219-0052

1500 St. Louis Avenue | West Bottoms | Kansas City, MO
48,000 SF Historic Building Offered at \$3,999,995

Haith
& Company, Inc.
Real Estate Services



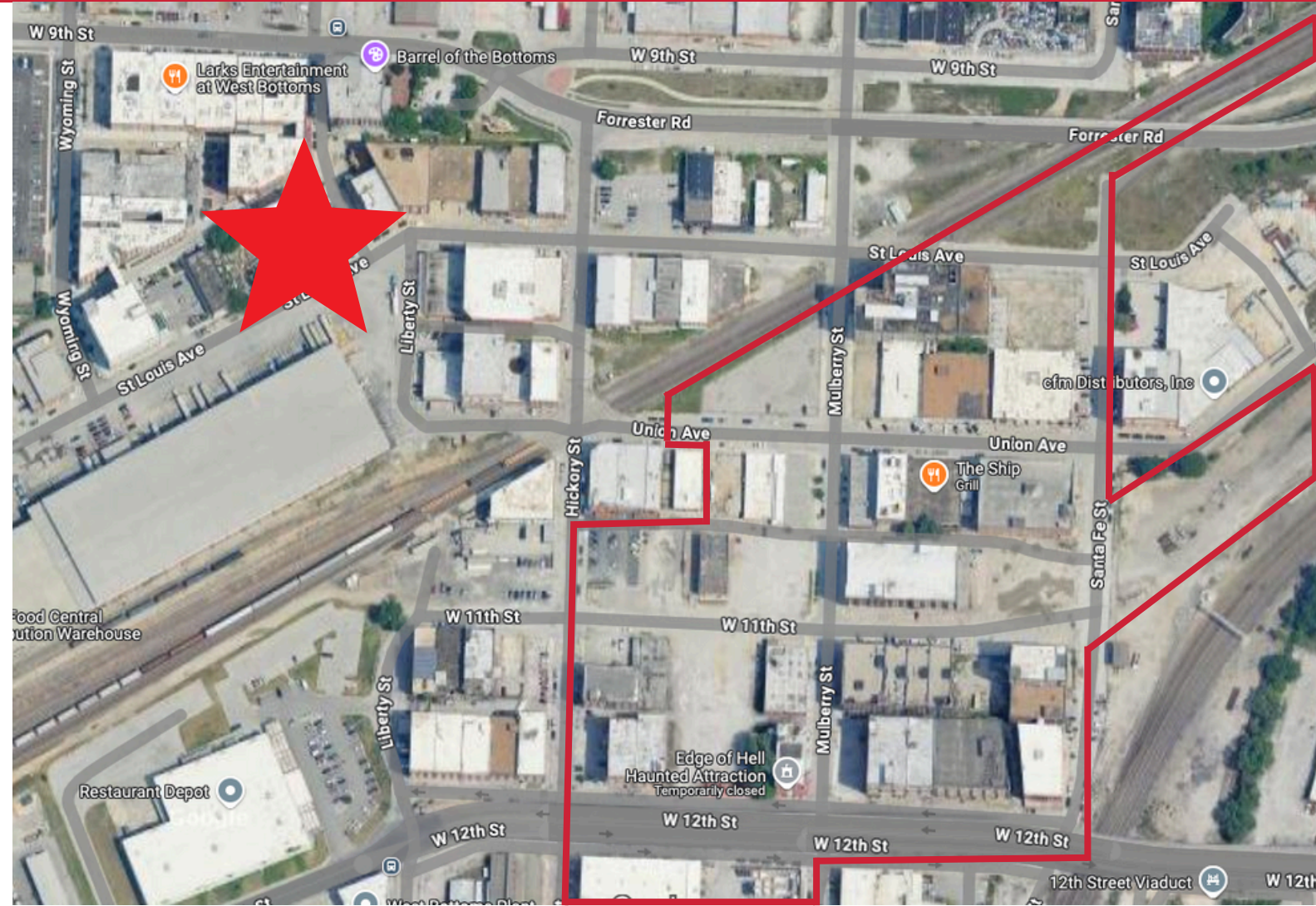
- Developer SomeraRoad is Transforming the West Bottoms with \$500mm+ Investment
 - “Live-Work-Play Concept Includes:
 - 1,250 New Residences
 - 168,000 SF of Offices
 - 100,000 SF of Retail Space
 - 50 Boutique Hotel Rooms
 - Additional Community Gathering Spaces

Chris Smart
Chris.Smart@Compass.com
M: (913) 226-4672
www.Haith.com

Haith
& Company, Inc.
Real Estate Services

David Smart
DSmart@Haith.com
O: (913) 888-3456
M: (913) 219-0052

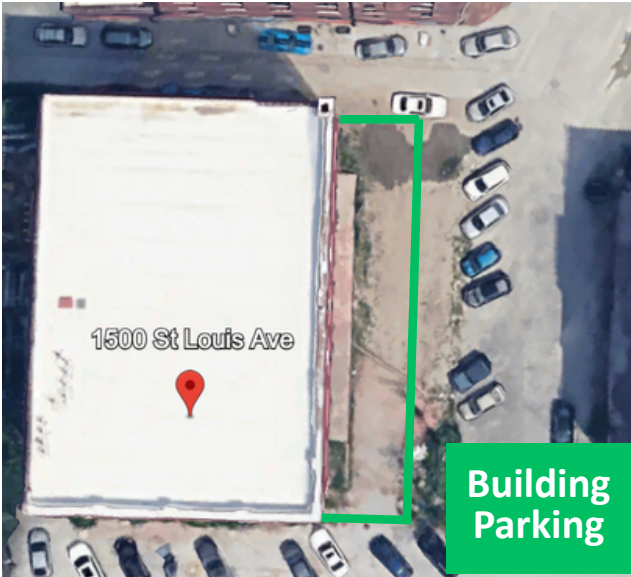
1500 St. Louis Avenue | West Bottoms | Kansas City, MO
48,000 SF Historic Building Offered at \$3,999,995



Approximate Footprint of SomeraRoad Development (not exact)

Easy Access to the KC Metro

Downtown KC	< 1.0 Miles
Westport	4.5 Miles
The Plaza	5.3 Miles
KCI Airport	19 Miles



Chris Smart
Chris.Smart@Compass.com
M: (913) 226-4672
www.Haith.com



David Smart
DSmart@Haith.com
O: (913) 888-3456
M: (913) 219-0052