

M E R I D I A N

147 S. CHERRY STREET, SUITE 200 | WINSTON-SALEM, NC 27101 | P 336.722.1986 | F 336.723.3173 | MERIDIANREALTY.COM

Retail | Office

GBX

408 N Liberty Street

Winston-Salem, NC 27101



Fronting Fourth St

Located at the prime intersection of 4th and Liberty Streets in downtown Winston-Salem, 408 N Liberty St is a historic two-story retail building offering a unique opportunity for investors or business owners seeking a prominent location. Constructed in 1912, this property is known as the former F.W. Woolworth Company building, adding a rich historical context that enhances its appeal. The building encompasses a total of 18,000 square feet with a basement, mezzanine, and a 2nd floor providing ample room for various business ventures or potential subdivision into multiple units.

For more information:

Charlie H. Fulk, CCIM

Cfulk@meridianrealty.com

336.480.2089

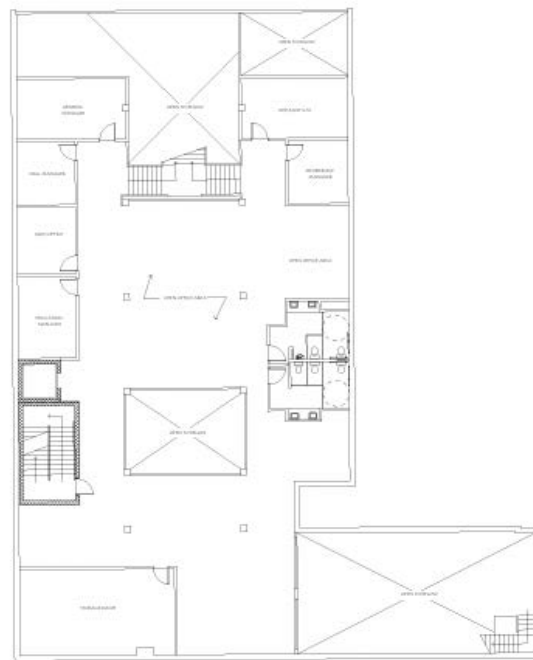
FOR SALE: \$1,250,000

WWW.MERIDIANREALTY.COM

INTERIOR PHOTOS



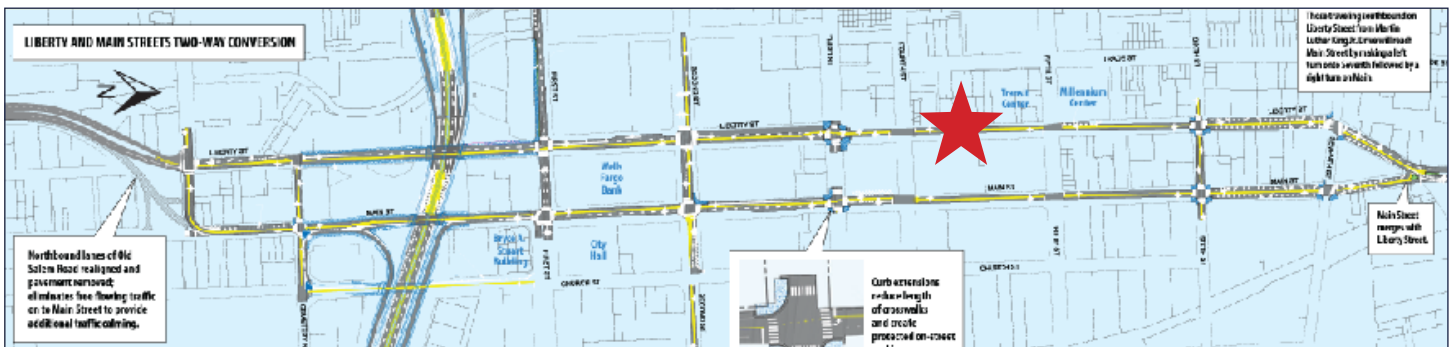
FLOORPLAN



EXTERIOR PHOTOS



SITE PLANS



408 N Liberty Street | Winston-Salem, NC 27101

BASIC Property Details

Avail sf±:	18,000	Bldg Age(YB):	1912	Lot Size±:	0.21 AC
sf per Floor±:	Varies	Dimensions±:	Irregular	Ceiling Ht±:	9' - 16' 10"
Building sf±:	18,000	Restrooms:	2	Parking±:	Street
Office sf±:	18,000	Floors:	3	Bay Size±:	n/a
Retail sf±:	18,000	Elevator:	no	Docks:	0
Whse sf±:	n/a			Drive-ins:	0

Flooring:	Concrete	Electrical:	ample	Air:	Central
Roof:	TPO	Water:	City of WS	Heat:	Central
Bldg Exterior:	Brick / Stucco	Sewer:	City of WS	Gas:	PNG
Sprinklered:		Zoning:	CB WO	Tax PIN(s):	6835-27-1110

Price:	\$1,250,000.00	Building Size:	18,000± SF L-Shaped comprised of:
Price/sf±:	\$69.44		• Section fronting Fourth St: 5,800± SF. 2 Stories approx. 2,900± SF per floor
Tax Value(s):	\$871,800.00		• Section fronting Liberty St: 9,200± SF plus supervisor mezzanine office, and low ceiling, partial basement.

1 MILE - DEMOS



\$52,366

Median Household Income

11,514

Population



6,199

Households



1,751

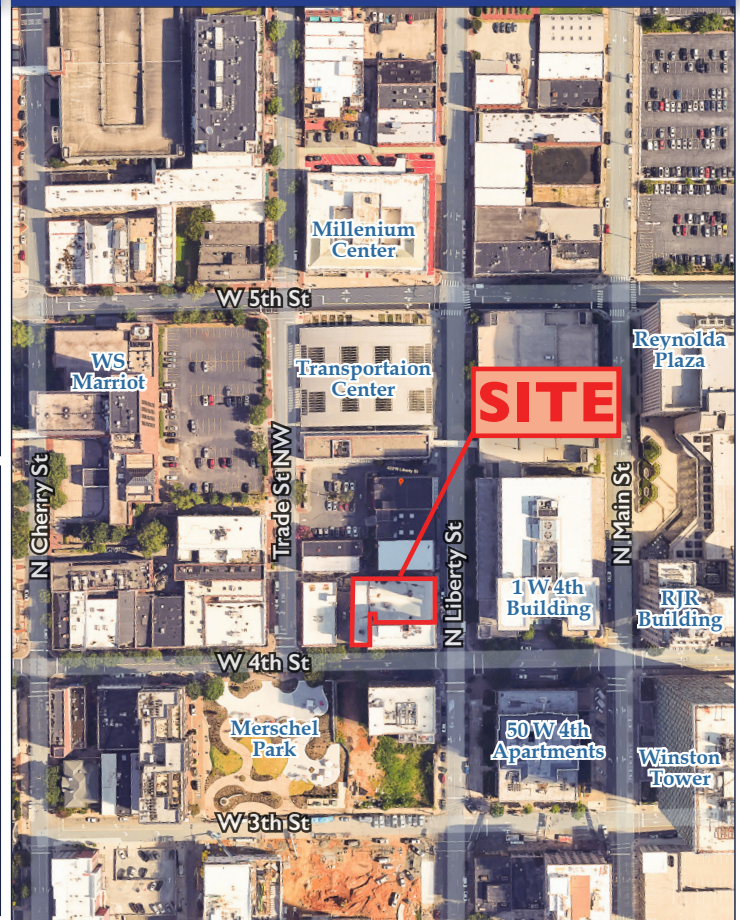
Total Businesses



24,621

Total Employees

MAP



No warranty or representation (express or implied) is made as to the accuracy or completeness of the information set forth herein. All information is submitted subject to errors, omissions, change of price, prior lease or sale, and withdrawal without notice. All marketing material produced by the Meridian Realty Group is proprietary. Any reproduction is expressly prohibited.



THE MERIDIAN REALTY GROUP | 147 S. CHERRY STREET, SUITE 200 | WINSTON-SALEM, NC 27101

P 336.722.1986 | F 336.723.3173

WWW.MERIDIANREALTY.COM