



# For Lease

**11,000 RSF**

666 Plainsboro Rd, Bldg. 1100  
Plainsboro, NJ

## Office space now available

- Enhanced cleaning, multiple times per day
- Located at the center of the Plainsboro Office market
- Twelve office suites from 587 SF to 1,850 SF (existing)
- Efficient suites, each with its own bathroom and kitchenette
- Internet Access
- Ample Direct Parking
- Nearby amenities include restaurants, shopping, hotels
- Close proximity to the Princeton Junction train station
- Halfway between New York City and Philadelphia

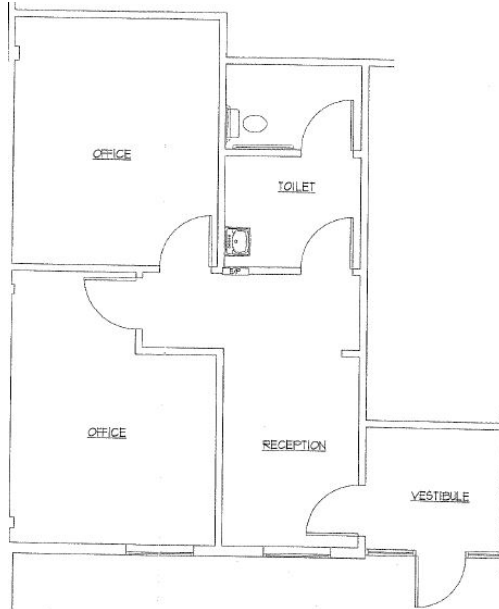
9 Suites Available from 587 SF – 1,850 SF

- **1016 (598 SF)**                    - 1238 (587 SF)
- **1022 (950 SF)**                    - 1239 (1,027 SF)
- **1214 (909 SF)**                    - 1335 (1,440 SF)\*
- **1226 (1,850 SF)**                    \*Available 2/1/2023
- 1237 (671 SF)                        - 1375 (690 SF)

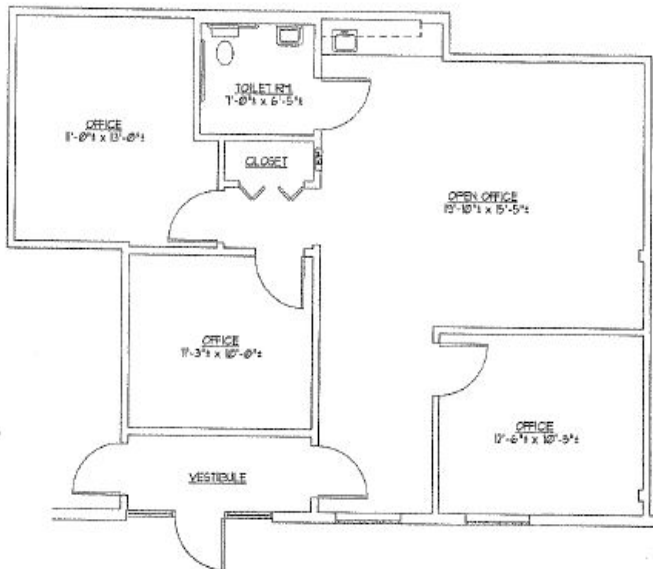
**666 Plainsboro Road  
Bldg. 1100  
Plainsboro, NJ**



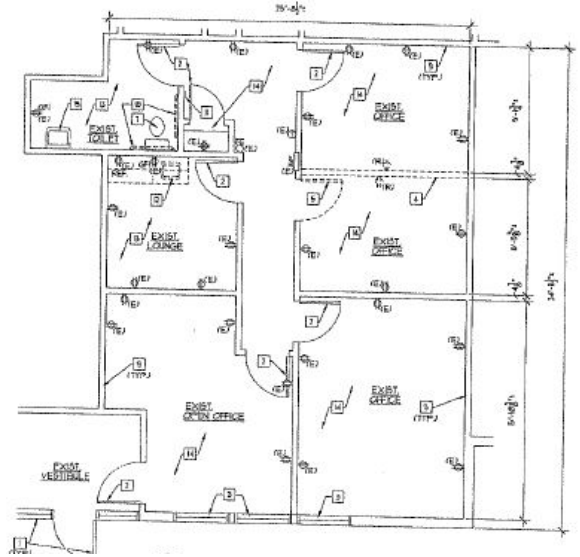
Suite 1016 (598 SF)



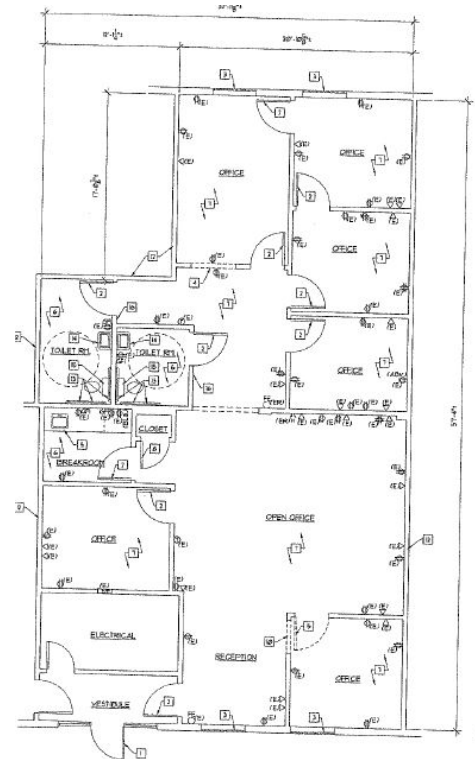
Suite 1022 (950 SF)



Suite 1214 (909 SF)



Suite 1226 (1,850 SF)



9 Suites Available from 587 SF – 1,850 SF

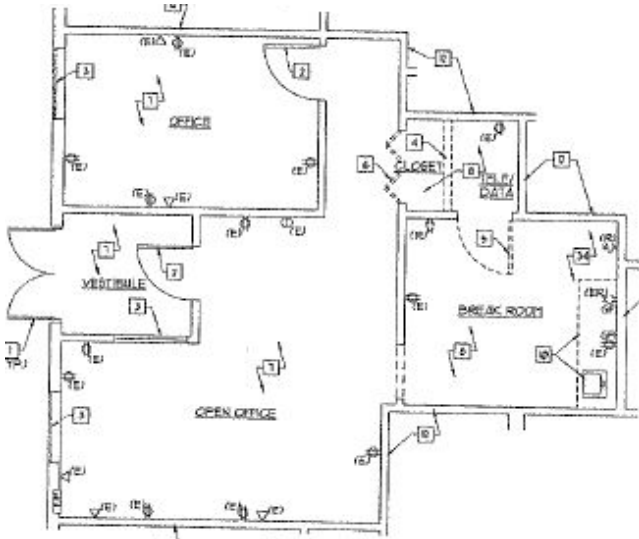
- 1016 (598 SF)
- 1022 (950 SF)
- 1214 (909 SF)
- 1226 (1,850 SF)
- **1237 (671 SF)**
- **1238 (587 SF)**
- **1239 (1,027 SF)**
- **1335 (1,440 SF)\***
- 1375 (690 SF)

\*Available 2/1/2023

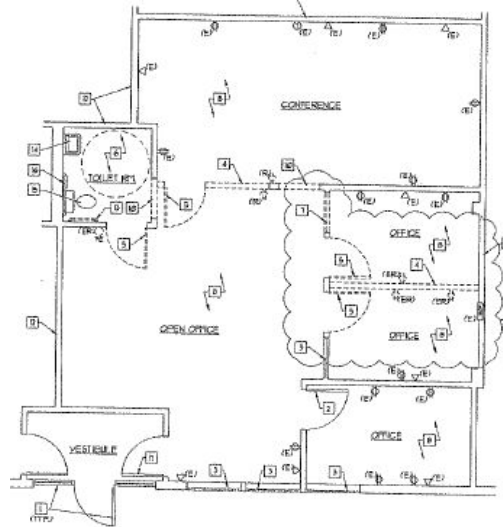
**666 Plainsboro Road  
Bldg. 1100  
Plainsboro, NJ**



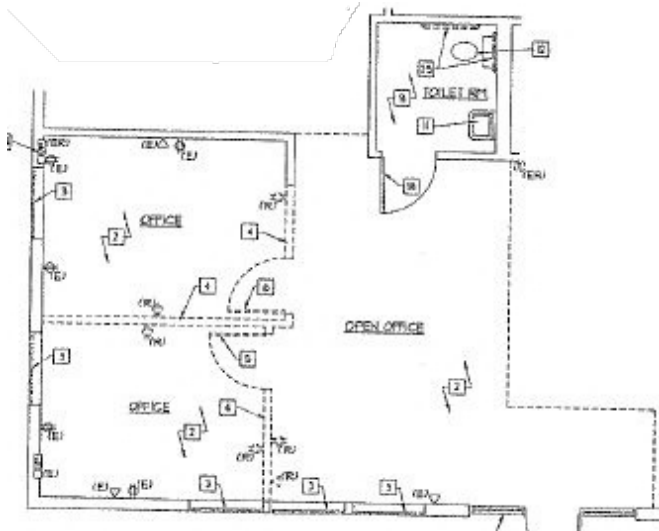
Suite 1237 (671 SF)



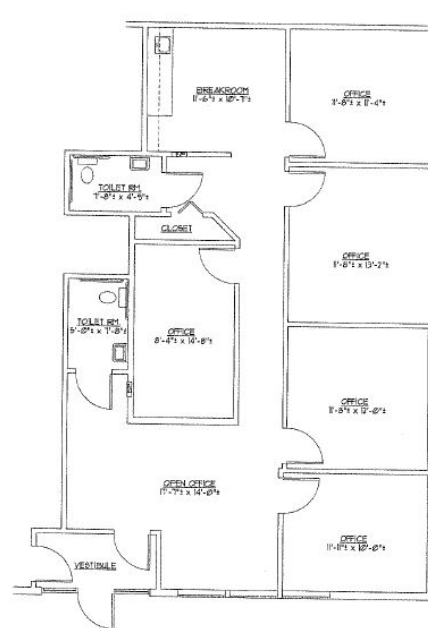
Suite 1239 (1,027 SF)



Suite 1238 (587 SF)



Suite 1335 (1,440 SF)\* Available 2/1/23



# 666 Plainsboro

---

Chris Romano  
+1 609 462 4858

[christopher.romano@am.jll.com](mailto:christopher.romano@am.jll.com)

