



## SUBLEASE

4078 Riverdale Rd.  
Riverdale, Utah 84405

## CONTACT US

**Dan Moore**

Vice President  
+1 801 947 8365  
dan.moore@colliers.com

**Rob Moore, CCIM**

Senior Vice President  
+1 801 947 8370  
rob.moore@colliers.com

**Colliers**

6440 S. Millrock Dr., Suite 500  
Salt Lake City, UT 84121  
Main: +1 801 947 8300  
colliers.com

## AVAILABLE:

1,500 SF

Do not disturb current tenant

- \$7.00/SF (NNN)
- High traffic counts on Riverdale Road: 47,566 ADT

## DEMOGRAPHICS

## Population

2025 Estimated  
2030 Projected

## Households

2025 Estimated  
2030 Projected

## Income

2025 Median HHI  
2025 Average HHI  
2025 Per Capita

## 1 MILE

## 3 MILE

## 5 MILE

11,780

83,574

180,826

12,265

86,265

186,822

4,062

31,982

65,959

4,292

33,663

69,359

\$77,813

\$77,503

\$82,783

\$92,454

\$99,068

\$103,216

\$32,312

\$37,758

\$37,766

Demographics provided by ESRI Business Analyst



1,500 SF | SUBLEASE

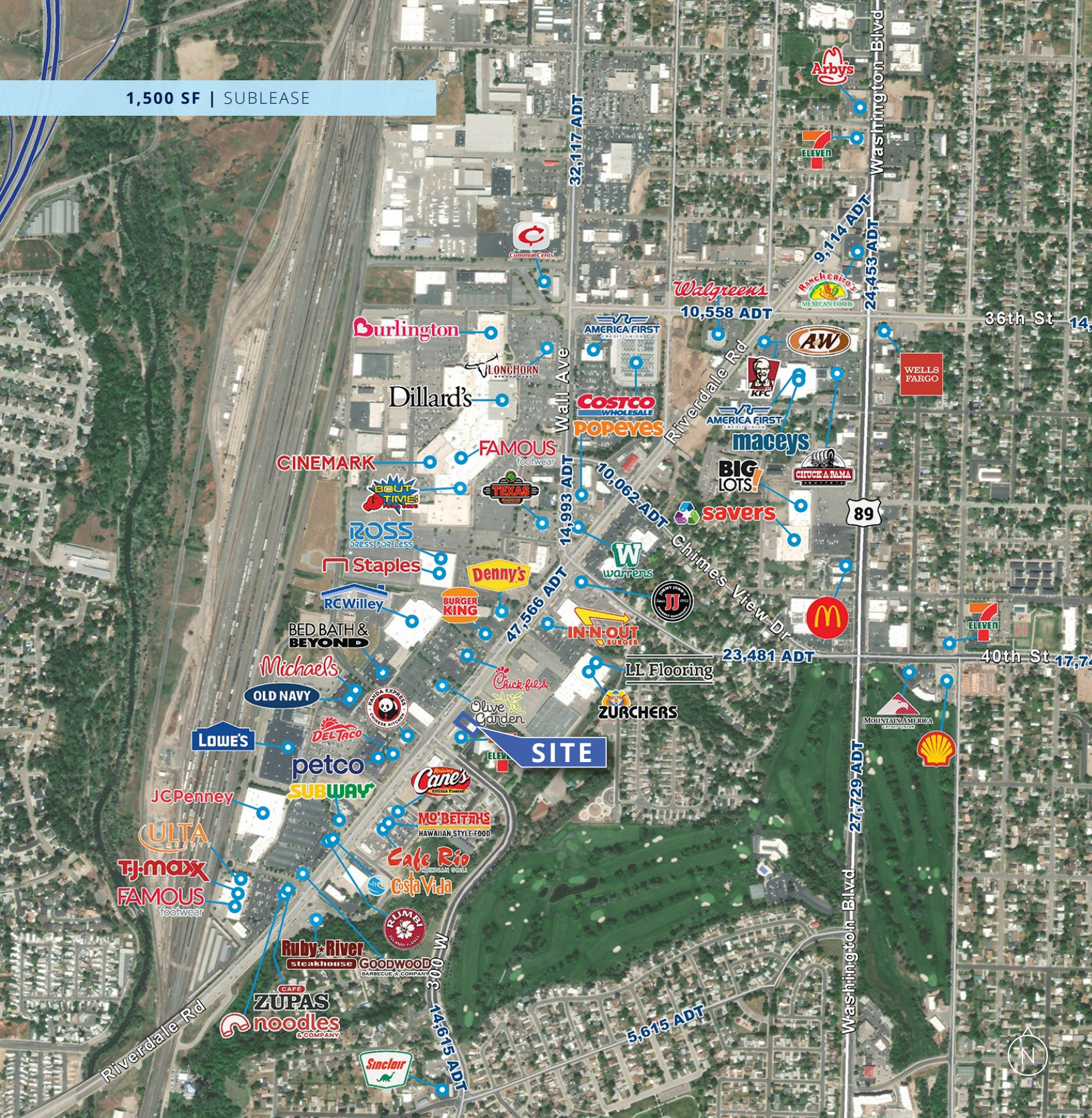
# 4078 Riverdale Rd.

Riverdale, Utah 84405





1,500 SF | SUBLEASE



#### Colliers

6440 S. Millrock Dr., Suite 500  
Salt Lake City, UT 84121  
Main: +1 801 947 8300  
colliers.com

#### Dan Moore

Vice President  
+1 801 947 8365  
dan.moore@colliers.com

#### Rob Moore, CCIM

Senior Vice President  
+1 801 947 8370  
rob.moore@colliers.com

This document has been prepared by Colliers International for advertising and general information only. Colliers International makes no guarantees, representations or warranties of any kind, expressed or implied, regarding the information including, but not limited to, warranties of content, accuracy and reliability. Any interested party should undertake their own inquiries as to the accuracy of the information. Colliers International excludes unequivocally all inferred or implied terms, conditions and warranties arising out of this document and excludes all liability for loss and damages arising therefrom. This publication is the copyrighted property of Colliers International and/or its licensor(s). ©2025. All rights reserved.