

# LAKE OSWEGO OFFICE SUITE

6455 LAKEVIEW BOULEVARD, LAKE OSWEGO, OR 97035



## PRESENTED BY:

### CAMERON SCHWAB

Oregon Licensed Commercial Broker

O: (503) 451-0745

[schwab@kwcommercial.com](mailto:schwab@kwcommercial.com)

License #: 201220872

### GRACE KIM

Oregon Licensed Commercial Broker

O: (503) 799-1835

[gracekim@kwcommercial.com](mailto:gracekim@kwcommercial.com)

License #: 201229016

**kw** PORTLAND  
PREMIERE  
KELLERWILLIAMS. REALTY

Each Office Independently Owned and Operated

We obtained the information above from sources we believe to be reliable. However, we have not verified its accuracy and make no guarantee, warranty or representation about it. It is submitted subject to the possibility of errors, omissions, change of price, rental or other conditions, prior sale, lease or financing, or withdrawal without notice. We include projections, opinions, assumptions or estimates for example only, and they may not represent current or future performance of the property. You and your tax and legal advisors should conduct your own investigation of the property and transaction.

# EXECUTIVE SUMMARY

6455 LAKEVIEW BOULEVARD



## OFFERING SUMMARY

LEASE RATE:	\$20 / SF NNN
AVAILABLE SF:	2,264
BUILDING SF:	6,486
LEASE TERM:	Negotiable
YEAR BUILT:	2005
NNN:	Call Broker for Estimates
PARKING:	15 Shared Spaces + Street Parking

## PROPERTY OVERVIEW

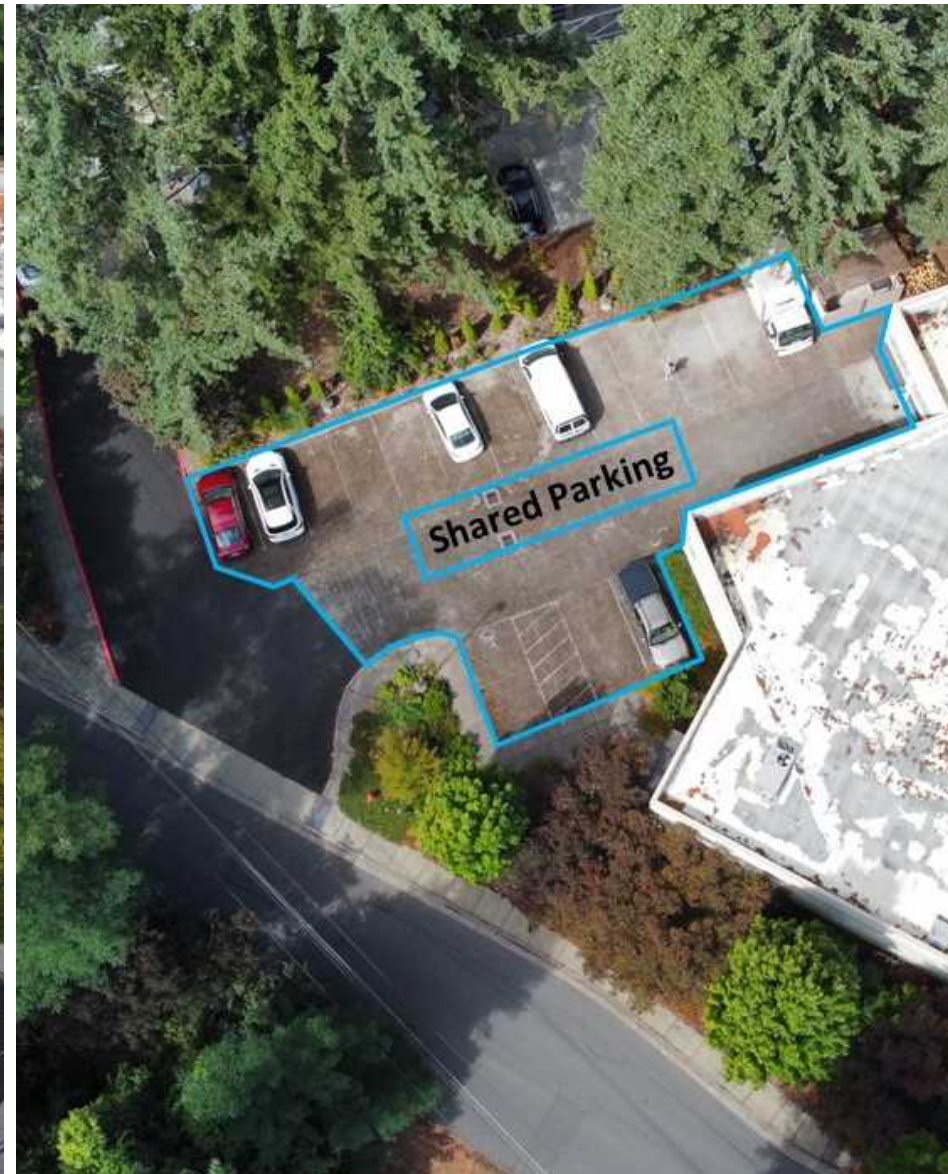
6455 Lakeview Blvd.'s Suite B is a roomy, high-ceilinged office space in Lake Oswego's west end. It includes four private offices, a reception area, a break room with kitchenette, a conference room, a large multi-purpose space, and an ADA restroom. It is well lit, with windows facing forested yard.

There is one other tenant in the building, Satori Fine Flavors, a coffee company. Satori uses the space for office and distribution - there is no onsite retail. Satori occupies all of the warehouse and their section of office. They regularly use fewer than half of the building's 15 shared parking stalls.

The building is located in Lake Oswego's west end industrial park with easy access to I-5. The popularity of the area's office parks led Willamette Week to call Lake Oswego, "Portland's New Main Street." The office is within a short drive of Zupan's Market, Safeway, Bridgeport Village, Nyberg Crossing, and Oswego Lake.

# EXTERIOR AND PARKING PHOTOS

6455 LAKEVIEW BOULEVARD



# FLOOR PLAN

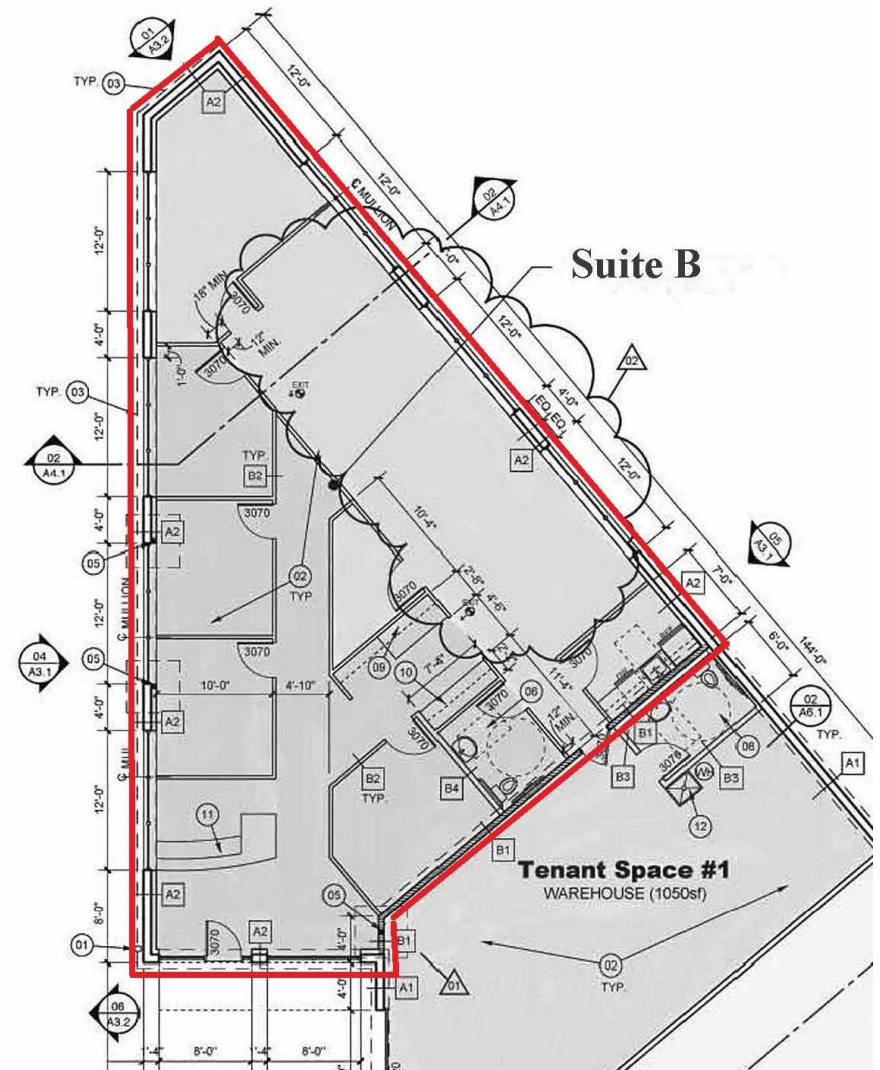
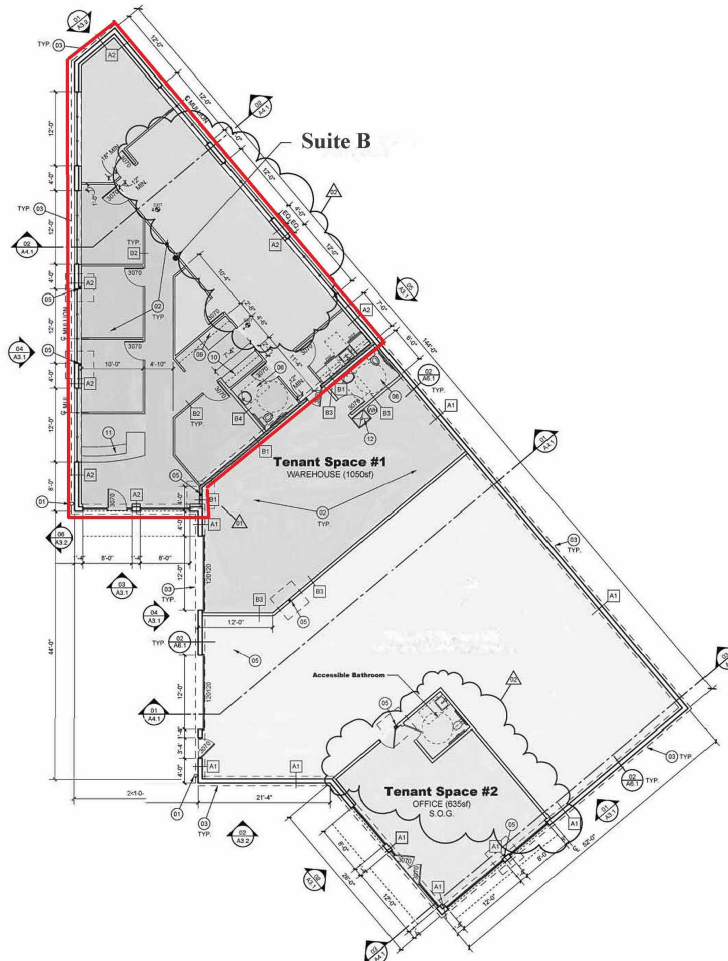
6455 LAKEVIEW BOULEVARD



## Building

## Suite B

AVAILABLE



**CAMERON SCHWAB**  
Oregon Licensed Commercial Broker  
O: (503) 451-0745  
schwab@kwcommercial.com  
License #: 201220872

**GRACE KIM**  
Oregon Licensed Commercial Broker  
O: (503) 799-1835  
gracekim@kwcommercial.com  
License #: 201229016

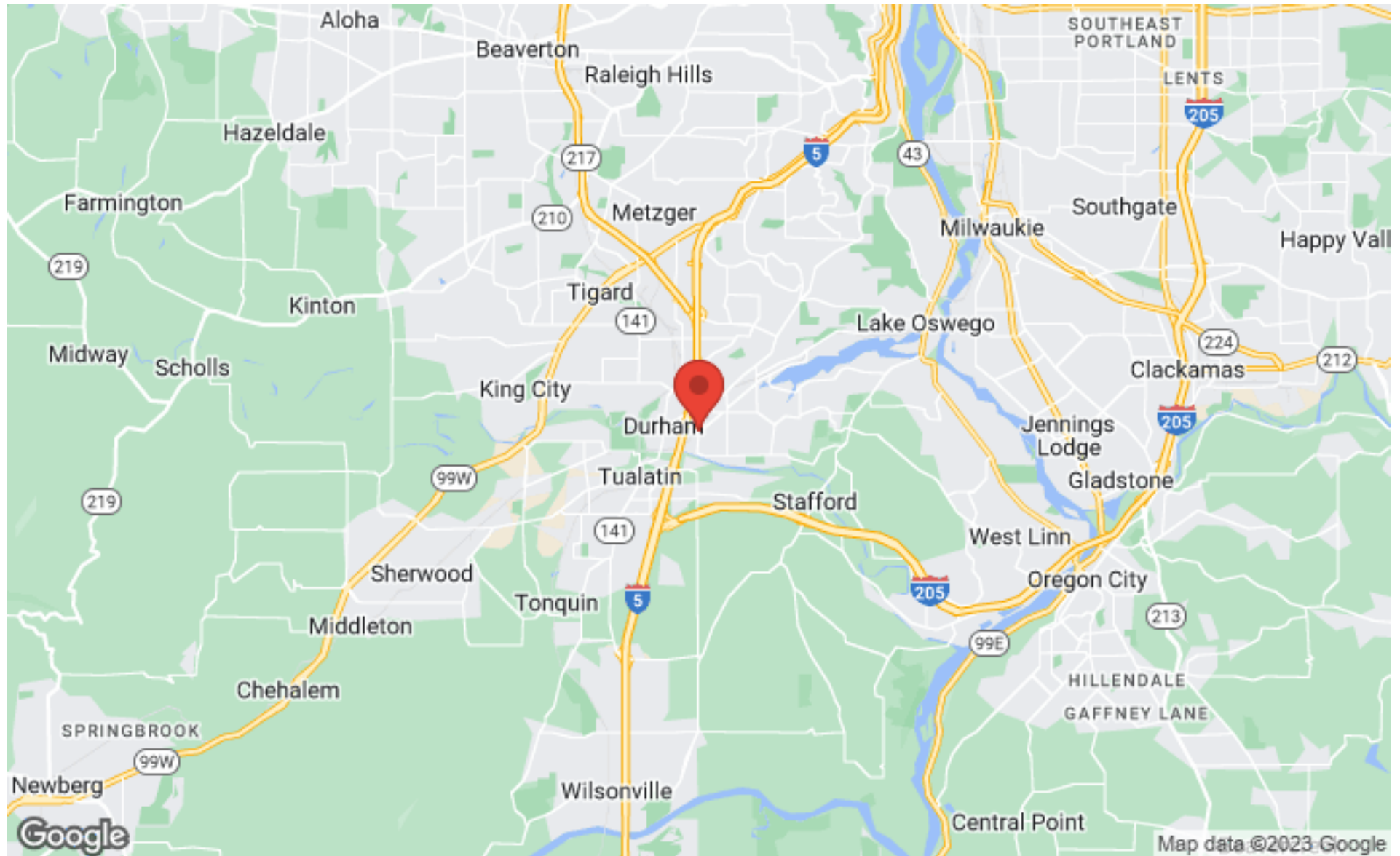
# INTERIOR PHOTOS

6455 LAKEVIEW BOULEVARD



# REGIONAL MAP

6455 LAKEVIEW BOULEVARD



## CAMERON SCHWAB

Oregon Licensed Commercial Broker

O: (503) 451-0745

[schwab@kwcommercial.com](mailto:schwab@kwcommercial.com)

License #: 201220872

## GRACE KIM

Oregon Licensed Commercial Broker

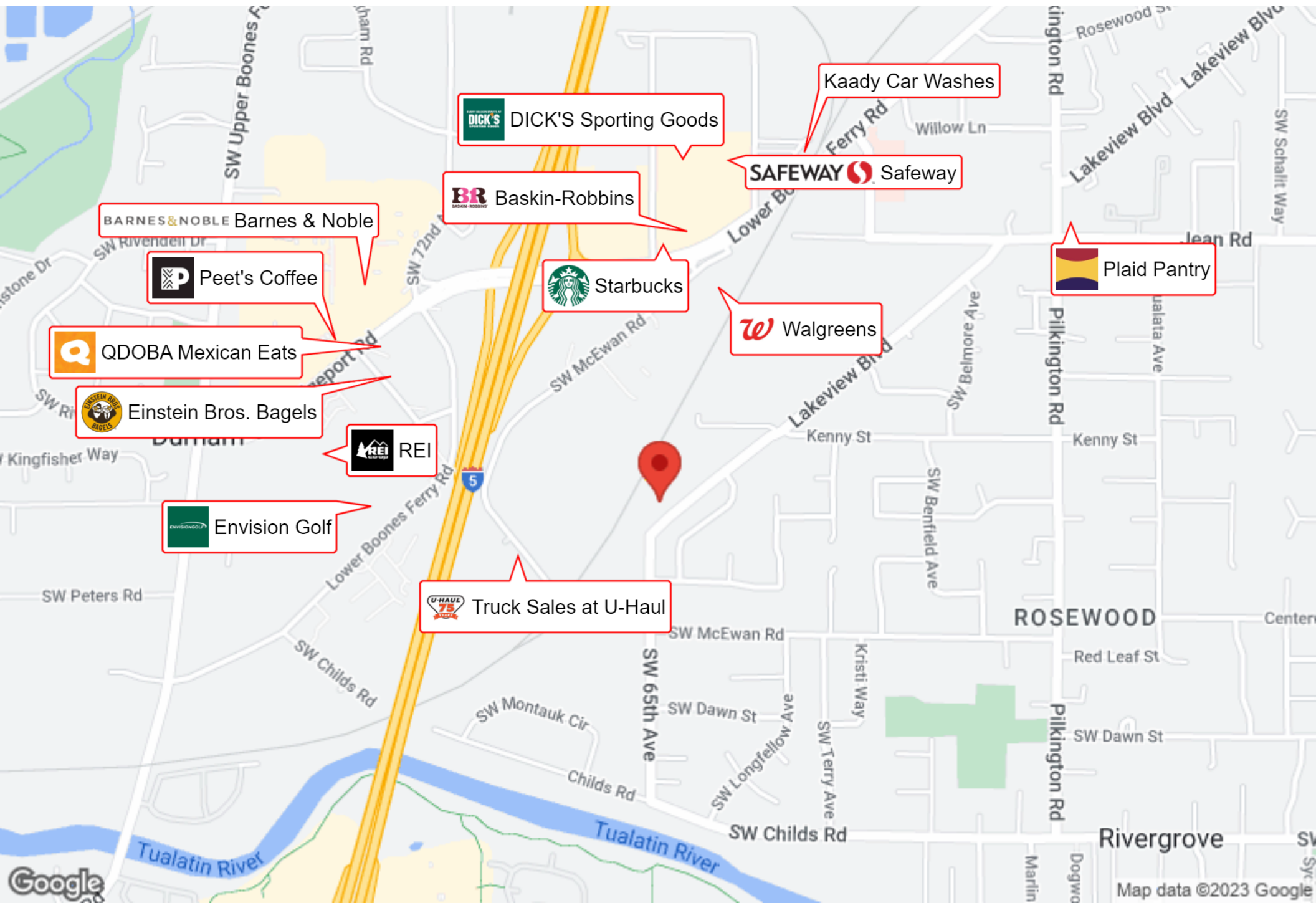
O: (503) 799-1835

[gracekim@kwcommercial.com](mailto:gracekim@kwcommercial.com)

License #: 201229016

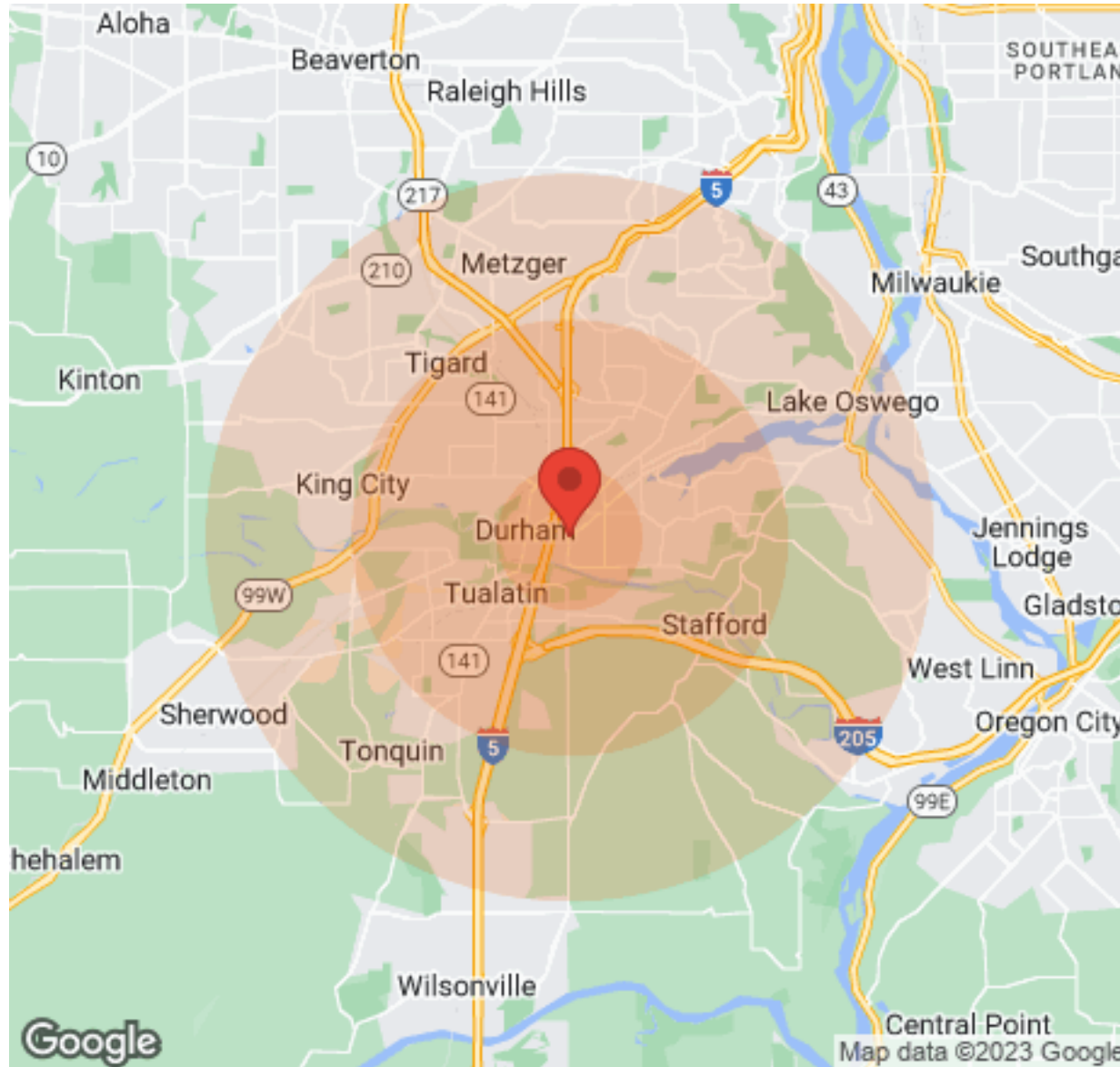
# BUSINESS MAP

6455 LAKEVIEW BOULEVARD



# DEMOGRAPHICS

6455 LAKEVIEW BOULEVARD



Population	1 Mile	3 Miles	5 Miles
Male	4,611	34,806	100,208
Female	4,681	37,251	104,680
Total Population	9,292	72,057	204,888

Age	1 Mile	3 Miles	5 Miles
Ages 0-14	1,870	12,661	36,996
Ages 15-24	1,344	9,455	26,980
Ages 25-54	3,410	27,149	78,024
Ages 55-64	1,138	9,710	27,952
Ages 65+	1,530	13,082	34,936

Race	1 Mile	3 Miles	5 Miles
White	7,277	62,138	178,247
Black	84	435	2,064
Am In/AK Nat	27	133	386
Hawaiian	108	317	603
Hispanic	2,261	8,496	20,043
Multi-Racial	3,304	12,332	30,786

Income	1 Mile	3 Miles	5 Miles
Median	\$51,464	\$64,830	\$70,076
< \$15,000	412	2,047	5,962
\$15,000-\$24,999	356	2,974	6,640
\$25,000-\$34,999	435	2,625	7,117
\$35,000-\$49,999	662	4,538	10,821
\$50,000-\$74,999	808	5,567	14,989
\$75,000-\$99,999	347	4,176	11,572
\$100,000-\$149,999	377	4,263	13,596
\$150,000-\$199,999	137	2,067	5,685
> \$200,000	187	1,965	6,712

Housing	1 Mile	3 Miles	5 Miles
Total Units	3,811	32,095	88,458
Occupied	3,615	30,321	83,752
Owner Occupied	1,709	18,574	53,691
Renter Occupied	1,906	11,747	30,061
Vacant	196	1,774	4,706

## CAMERON SCHWAB

Oregon Licensed Commercial Broker

O: (503) 451-0745

schwab@kwcommercial.com

License #: 201220872

## GRACE KIM

Oregon Licensed Commercial Broker

O: (503) 799-1835

gracekim@kwcommercial.com

License #: 201229016

# DISCLAIMER

6455 LAKEVIEW BOULEVARD



All materials and information received or derived from KW Commercial its directors, officers, agents, advisors, affiliates and/or any third party sources are provided without representation or warranty as to completeness, veracity, or accuracy, condition of the property, compliance or lack of compliance with applicable governmental requirements, developability or suitability, financial performance of the property, projected financial performance of the property for any party's intended use or any and all other matters.

Neither KW Commercial its directors, officers, agents, advisors, or affiliates makes any representation or warranty, express or implied, as to accuracy or completeness of the any materials or information provided, derived, or received. Materials and information from any source, whether written or verbal, that may be furnished for review are not a substitute for a party's active conduct of its own due diligence to determine these and other matters of significance to such party. KW Commercial will not investigate or verify any such matters or conduct due diligence for a party unless otherwise agreed in writing.

EACH PARTY SHALL CONDUCT ITS OWN INDEPENDENT INVESTIGATION AND DUE DILIGENCE.

Any party contemplating or under contract or in escrow for a transaction is urged to verify all information and to conduct their own inspections and investigations including through appropriate third-party independent professionals selected by such party. All financial data should be verified by the party including by obtaining and reading applicable documents and reports and consulting appropriate independent professionals. KW Commercial makes no warranties and/or representations regarding the veracity, completeness, or relevance of any financial data or assumptions. KW Commercial does not serve as a financial advisor to any party regarding any proposed transaction.

All data and assumptions regarding financial performance, including that used for financial modeling purposes, may differ from actual data or performance. Any estimates of market rents and/or projected rents that may be provided to a party do not necessarily mean that rents can be established at or increased to that level. Parties must evaluate any applicable contractual and governmental limitations as well as market conditions, vacancy factors and other issues in order to determine rents from or for the property. Legal questions should be discussed by the party with an attorney. Tax questions should be discussed by the party with a certified public accountant or tax attorney. Title questions should be discussed by the party with a title officer or attorney. Questions regarding the condition of the property and whether the property complies with applicable governmental requirements should be discussed by the party with appropriate engineers, architects, contractors, other consultants, and governmental agencies. All properties and services are marketed by KW Commercial in compliance with all applicable fair housing and equal opportunity laws.



## PRESENTED BY:

### CAMERON SCHWAB

Oregon Licensed Commercial Broker  
O: (503) 451-0745  
schwab@kwcommercial.com  
License #: 201220872

### GRACE KIM

Oregon Licensed Commercial Broker  
O: (503) 799-1835  
gracekim@kwcommercial.com  
License #: 201229016

The calculations and data presented are deemed to be accurate, but not guaranteed. They are intended for the purpose of illustrative projections and analysis. The information provided is not intended to replace or serve as substitute for any legal, accounting, investment, real estate, tax or other professional advice, consultation or service. The user of this software should consult with a professional in the respective legal, accounting, tax or other professional area before making any decisions.