

# Bloomfield CENTRE



**39533 Woodward Avenue**  
Bloomfield Hills' Premier Address

**CBRE**

# Welcome to **BLOOMFIELD CENTRE**

With over 13,864 SF of contiguous class A space immediately off the main lobby, coupled with high-end tenant amenities, this is an opportunity like no other.



# HIGH-END AMENITIES



Secured Underground Parking



On-site Management



Fitness Center



Food Service On-site



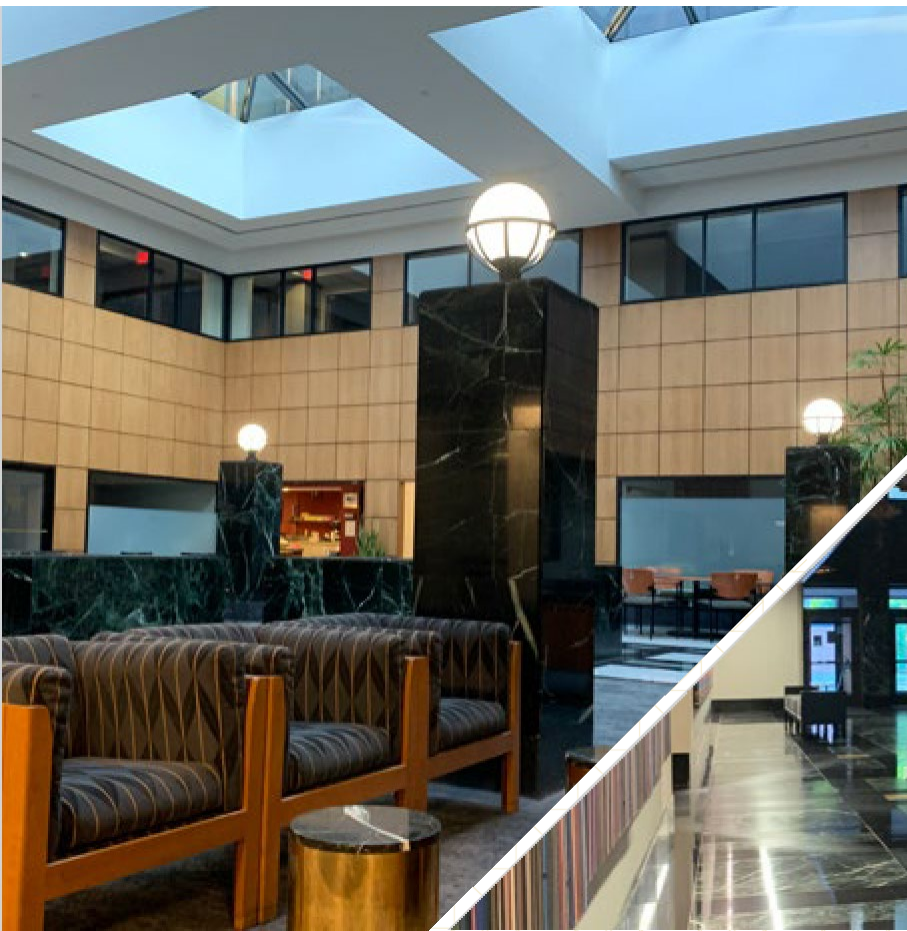
Auto Spa



Second Floor Roof Terrace



Collaborative Atrium Meeting Space



ROOF TERRACE

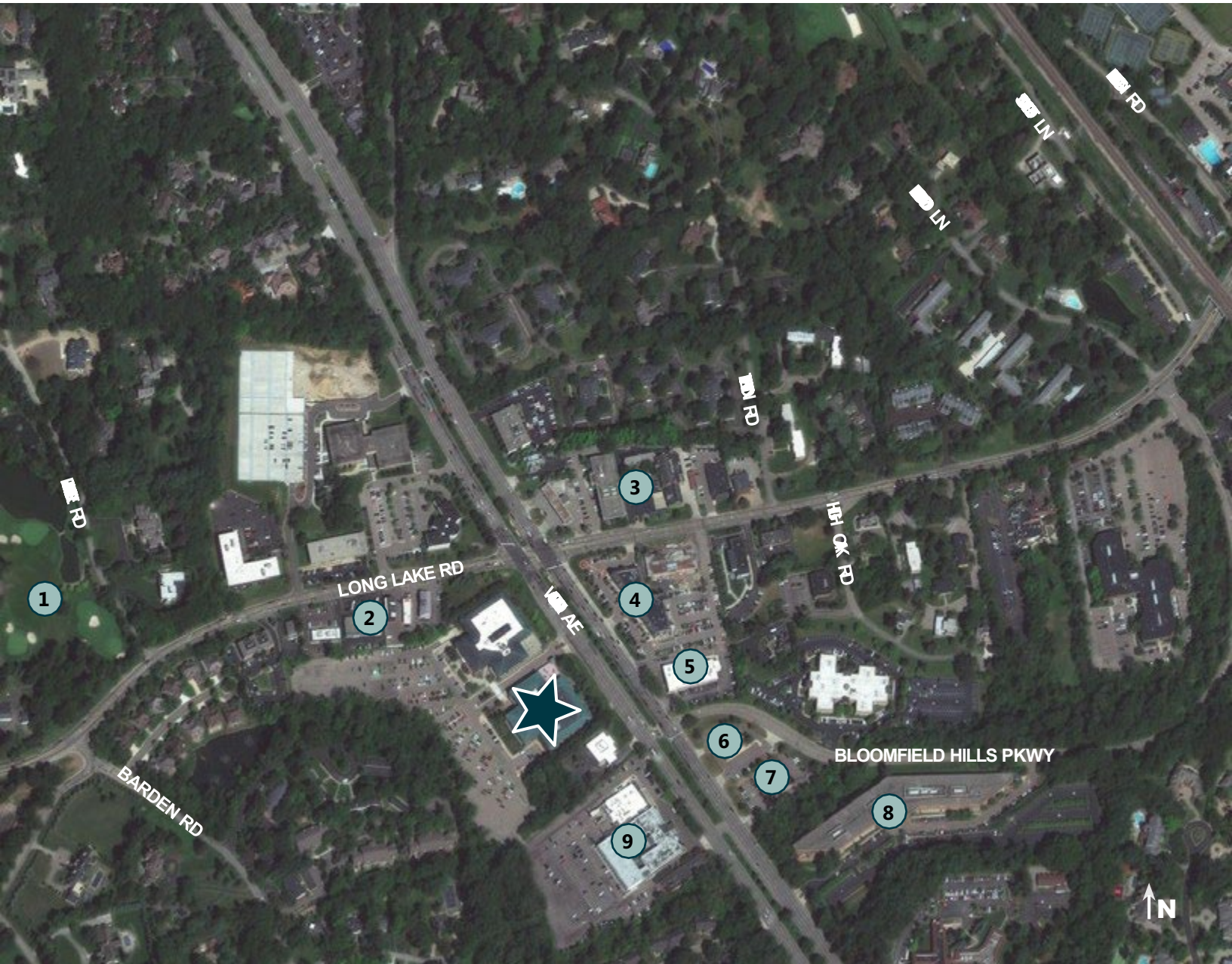


CAFÉ



# AERIAL

A vibrant location located at the corner of Woodward and Long Lake Road. A short walk to numerous restaurants and other area amenities.



★ Bloomfield Centre

1 Bloomfield Hills Country Club

2 Bloomfield Deli

3 Bloomfield Hills City Offices

4 Chase Bank, Bill's Restaurant, Bruegger's

5 Huntington Bank

6 Citizens Bank

7 Little Daddy's

8 Comerica Bank

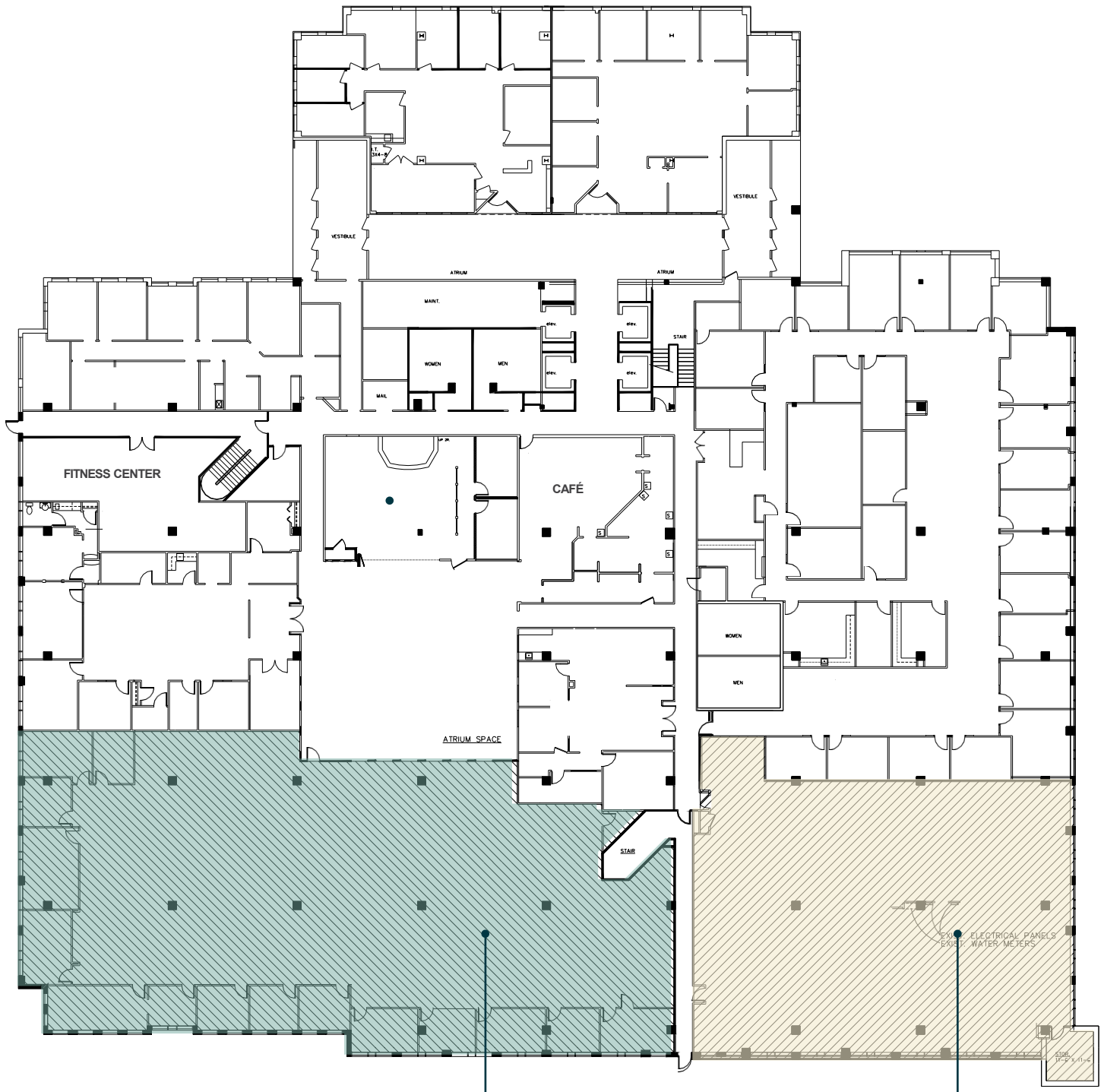
9 DoubleTree by Hilton Hotel, Joe Muer Seafood, Zaiman's Deli

# STACKING PLAN



FLOOR	SUITE	SF AVAILABLE	RENT
P 1st	155	7,228	\$24.50 + Elec
P 1st	140	12,014	\$27.00 + Elec
P 3rd	333	6,305*	\$27.00 + Elec

# FLOOR PLAN 1st Floor



Suites 140  
12,014 RSF

Suite 155  
7,228 RSF  
Special Pricing – 24.50/SF  
Can be further demised

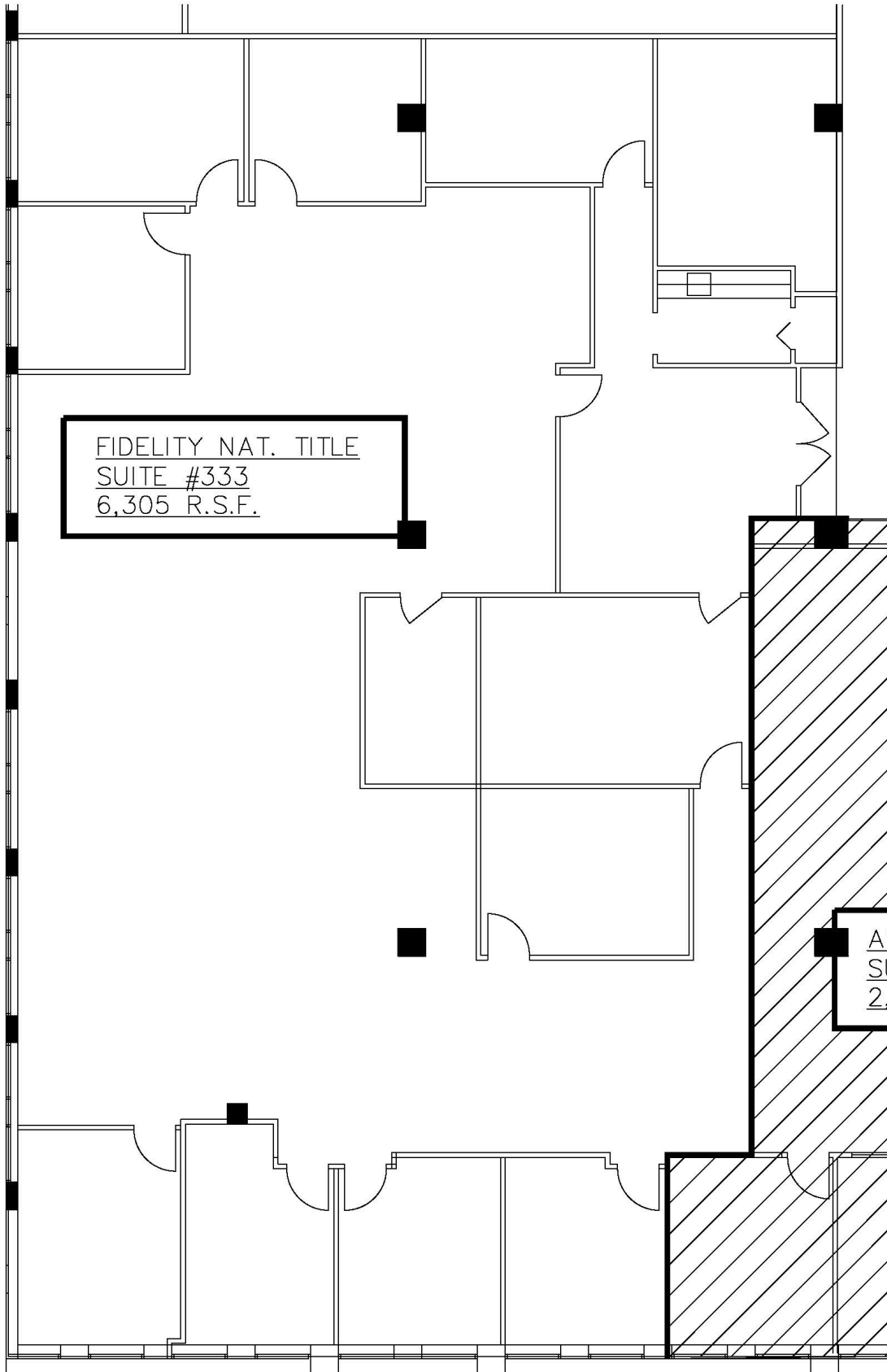
[Explore Suite 140](#)

# FLOOR PLAN 3rd Floor



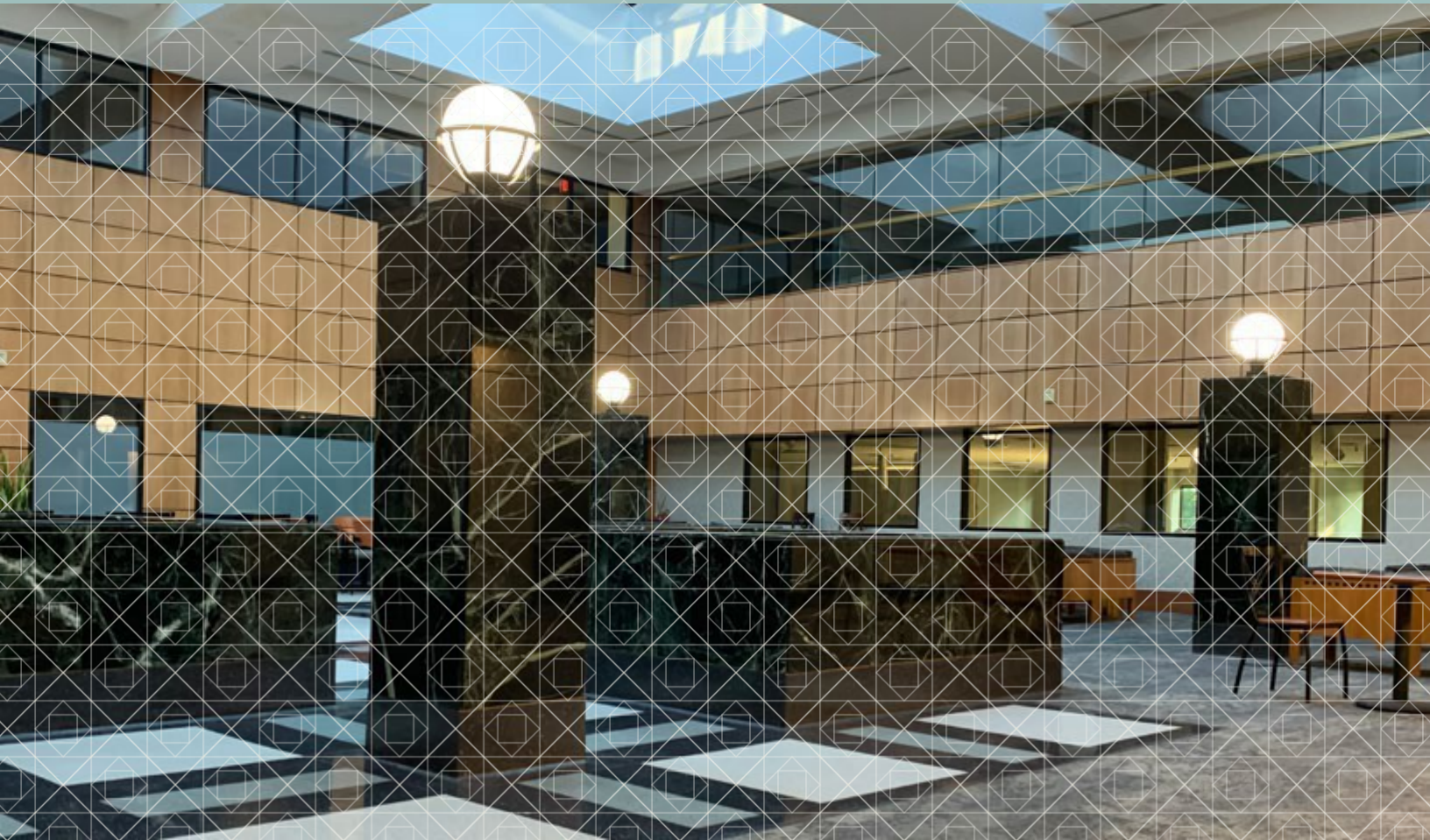
Suite 333  
6,305 RSF

# FLOOR PLAN Suite 333





# Bloomfield CENTRE



## Contact

### **BRENDAN GEORGE**

Senior Vice President

+1 248 3512039

[brendan.george@cbre.com](mailto:brendan.george@cbre.com)

### **JASPER HANIFI**

Senior Associate

248 351 2020

[jasper.hanifi@cbre.com](mailto:jasper.hanifi@cbre.com)

© 2024 CBRE, Inc. All rights reserved. This information has been obtained from sources believed reliable, but has not been verified for accuracy or completeness. You should conduct a careful, independent investigation of the property and verify all information. Any reliance on this information is solely at your own risk. CBRE and the CBRE logo are service marks of CBRE, Inc. All other marks displayed on this document are the property of their respective owners, and the use of such logos does not imply any affiliation with or endorsement of CBRE. Photos herein are the property of their respective owners. Use of these images without the express written consent of the owner is prohibited. Licensed Real Estate Broker. PMSstudio\_July2021

**CBRE**