

2001 SE Jefferson Street

MILWAUKIE, OR 97222



Kevin VandenBrink
503.972.7289
kevinv@macadamforbes.com
Licensed in OR

2 Centerpointe Drive, Suite 500 | Lake Oswego, OR 97035 | WWW.MACADAMFORBES.COM | 503.227.2500

All of the information contained herein was obtained either from the owner or other parties we consider reliable. We have no reason to doubt its accuracy, however we do not guarantee it.

FOR LEASE



FOR LEASE

2001 SE Jefferson Street, Milwaukie, OR 97222



PROPERTY DESCRIPTION

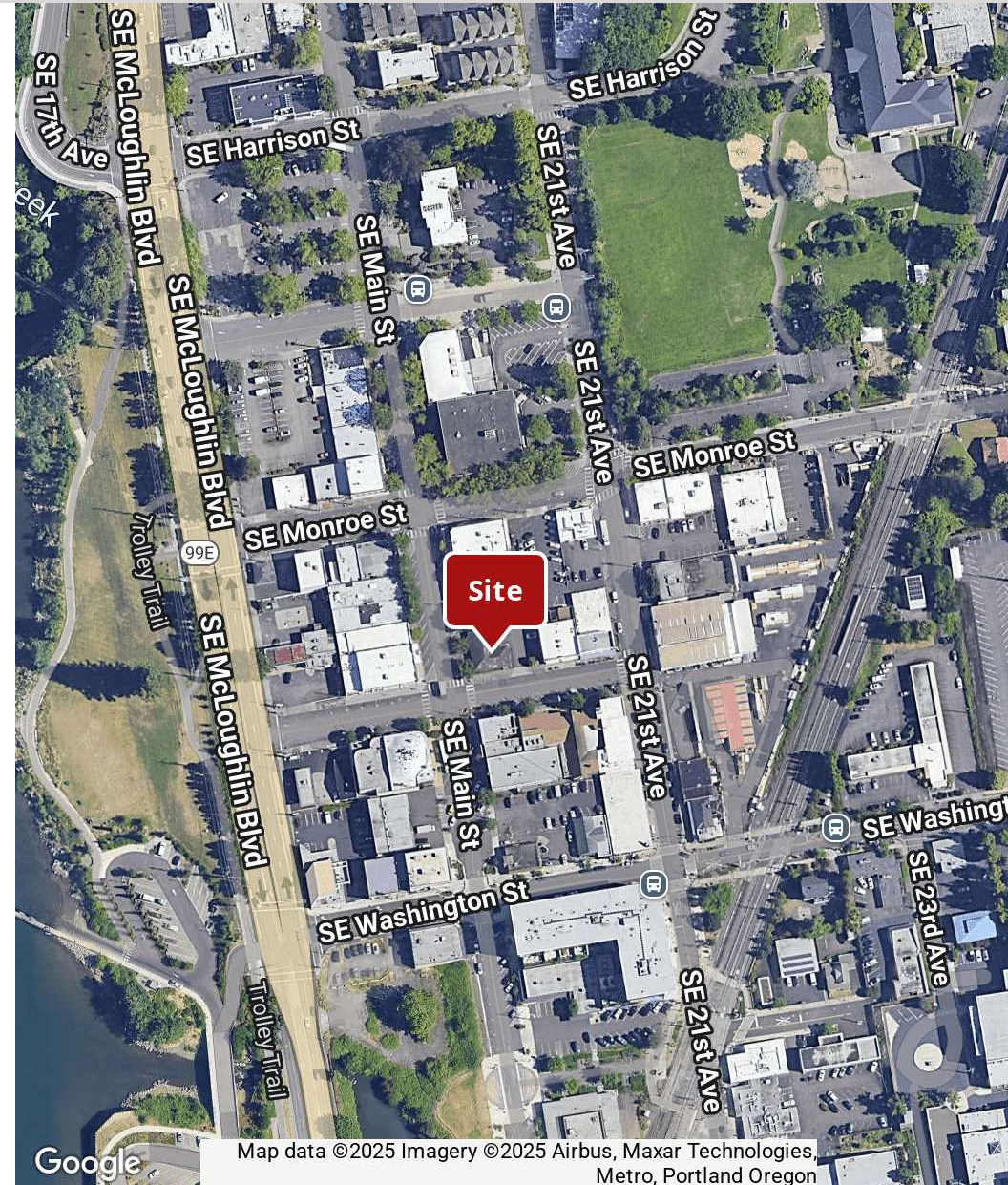
Existing Oral Surgery/Dental office with 15 off-street parking spaces. The current tenant is relocating in Summer 2025.

LOCATION DESCRIPTION

Located on a prime hard corner in downtown Milwaukie. Exciting new developments underway around the downtown area with easy access to SE Portland, Oak Grove, Clackamas, and Milwaukie neighborhoods.

OFFERING SUMMARY

| | |
|----------------|---------------------|
| Lease Rate: | \$36.00 SF/yr (NNN) |
| Available SF: | 2,668 SF |
| Lot Size: | 10,998 SF |
| Building Size: | 2,668 SF |



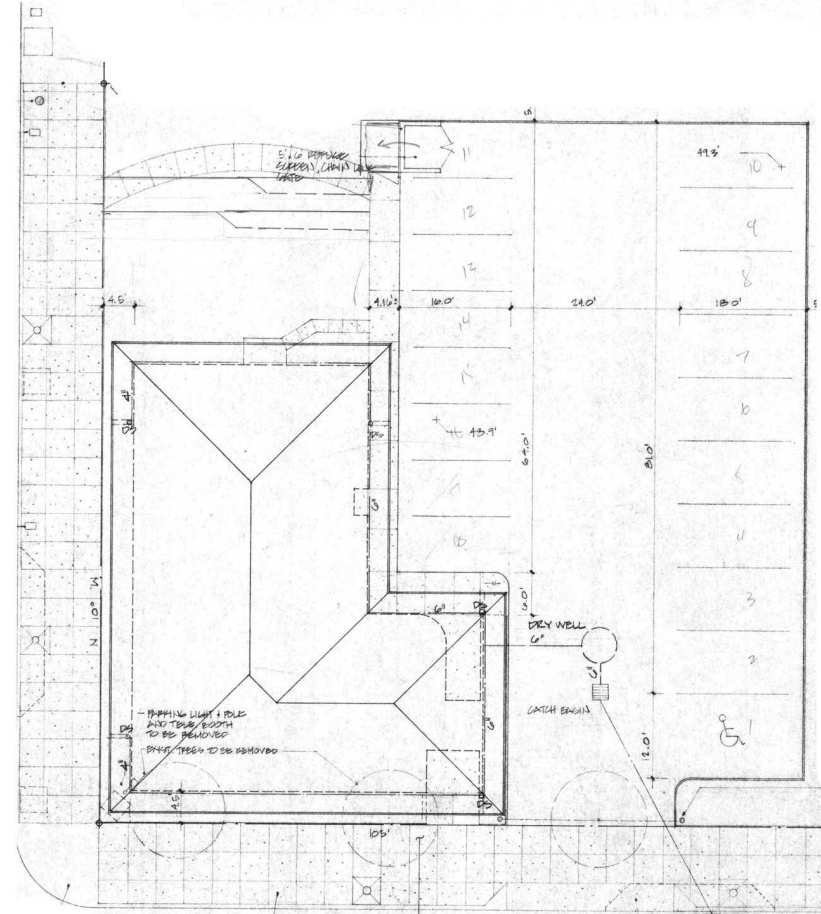
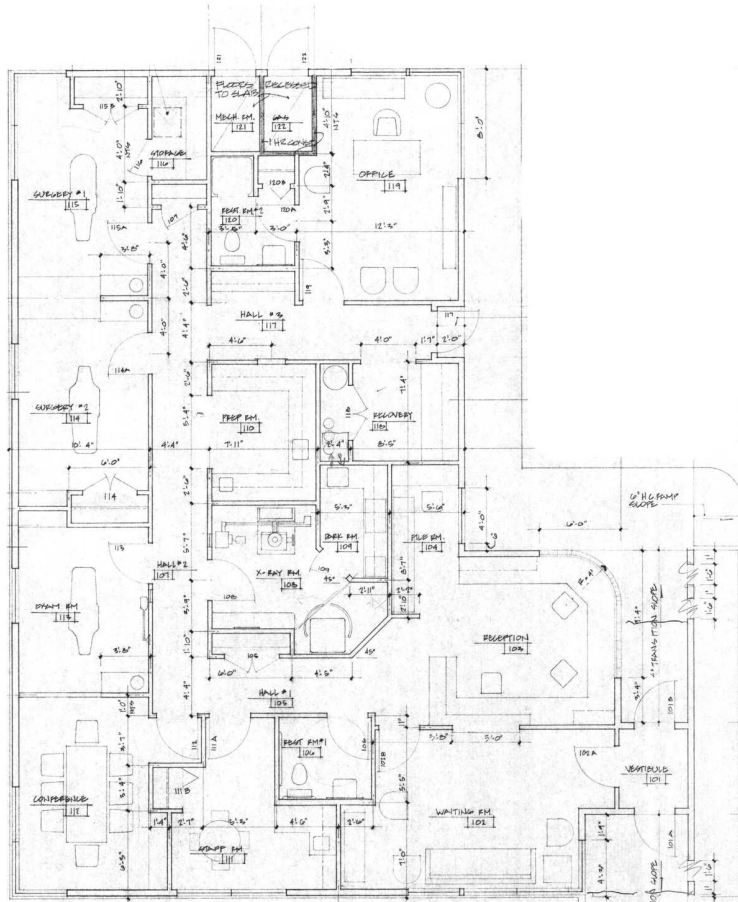
Kevin VandenBrink
503.972.7289
kevinv@macadamforbes.com
Licensed in OR

All of the information contained herein was obtained either from the owner or other parties we consider reliable. We have no reason to doubt its accuracy, however we do not guarantee it.

MACADAMFORBES.COM | 503.227.2500

FOR LEASE

2001 SE Jefferson Street, Milwaukie, OR 97222



Kevin VandenBrink
 503.972.7289
 kevinv@macadamforbes.com
 Licensed in OR

All of the information contained herein was obtained either from the owner or other parties we consider reliable. We have no reason to doubt its accuracy, however we do not guarantee it.

MACADAMFORBES.COM | 503.227.2500