



Columbia Industrial Park

BUILDING 4, 6781 NE COLUMBIA BLVD, PORTLAND, OR

FOR LEASE



Newer construction with
local ownership!

4,935 SF available

± **600 SF** office area with
two restrooms

CONCRETE TILT construction

GLASS entry with architectural steel awnings

24' clear height

1 GRADE door

NEWER LED Lighting throughout

UTILITY and triple sinks, 220 volt outlets
in warehouse

480/277V 3-phase power

WET FIRE PROTECTION - NFPA 13 compliant
and ESFR ready

1.15/1,000 parking ratio

IG2 ZONING, city of Portland

\$0.95/\$1.10, NNN

ZACH FRANCIS
503.221.2290
zach.francis@kidder.com

KARLA HANSEN
503.721.2727
karla.hansen@kidder.com

CHRIS DOWHANIUK
503.789.5308
chris.dowhaniuk@kidder.com

**Kidder
Mathews**

This information supplied herein is from sources we deem reliable. It is provided without any representation, warranty, or guarantee, expressed or implied as to its accuracy. Prospective Buyer or Tenant should conduct an independent investigation and verification of all matters deemed to be material, including, but not limited to, statements of income and expenses. Consult your attorney, accountant, or other professional advisor.

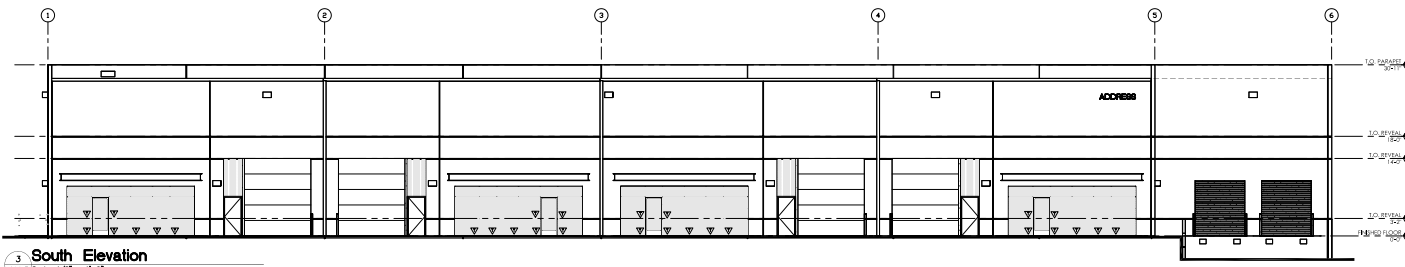
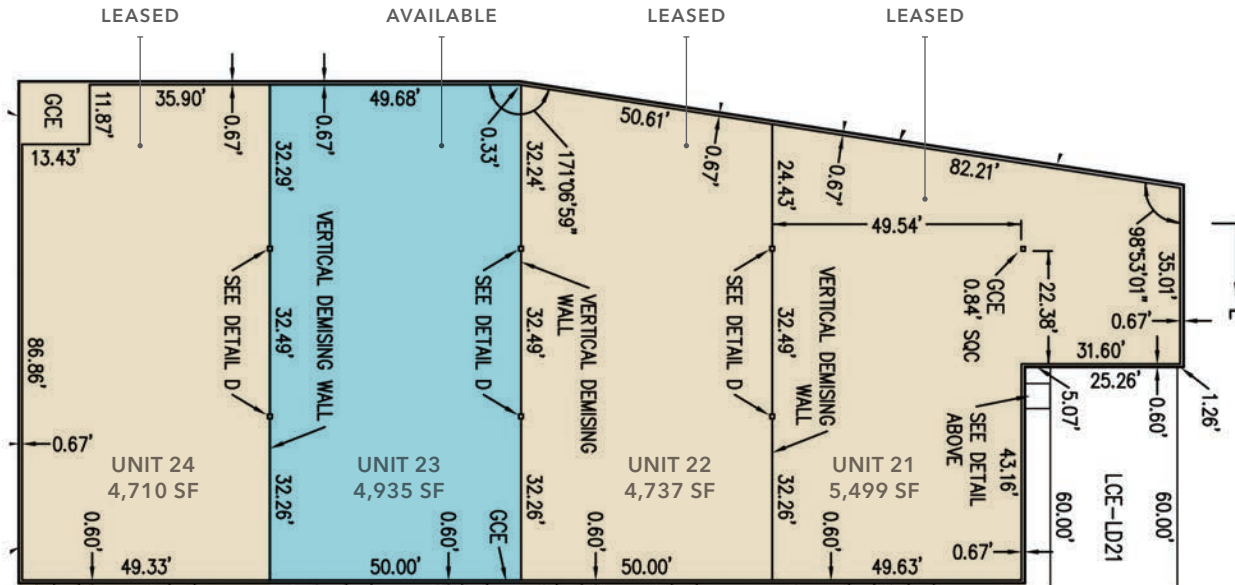
KIDDER.COM

FOR LEASE

Columbia Industrial Park

6781 NE COLUMBIA BLVD, PORTLAND, OR

Building 4



ZACH FRANCIS
503.221.2290
zach.francis@kidder.com

KARLA HANSEN
503.721.2727
karla.hansen@kidder.com

CHRIS DOWHANIUK
503.789.5308
chris.dowhaniuk@kidder.com

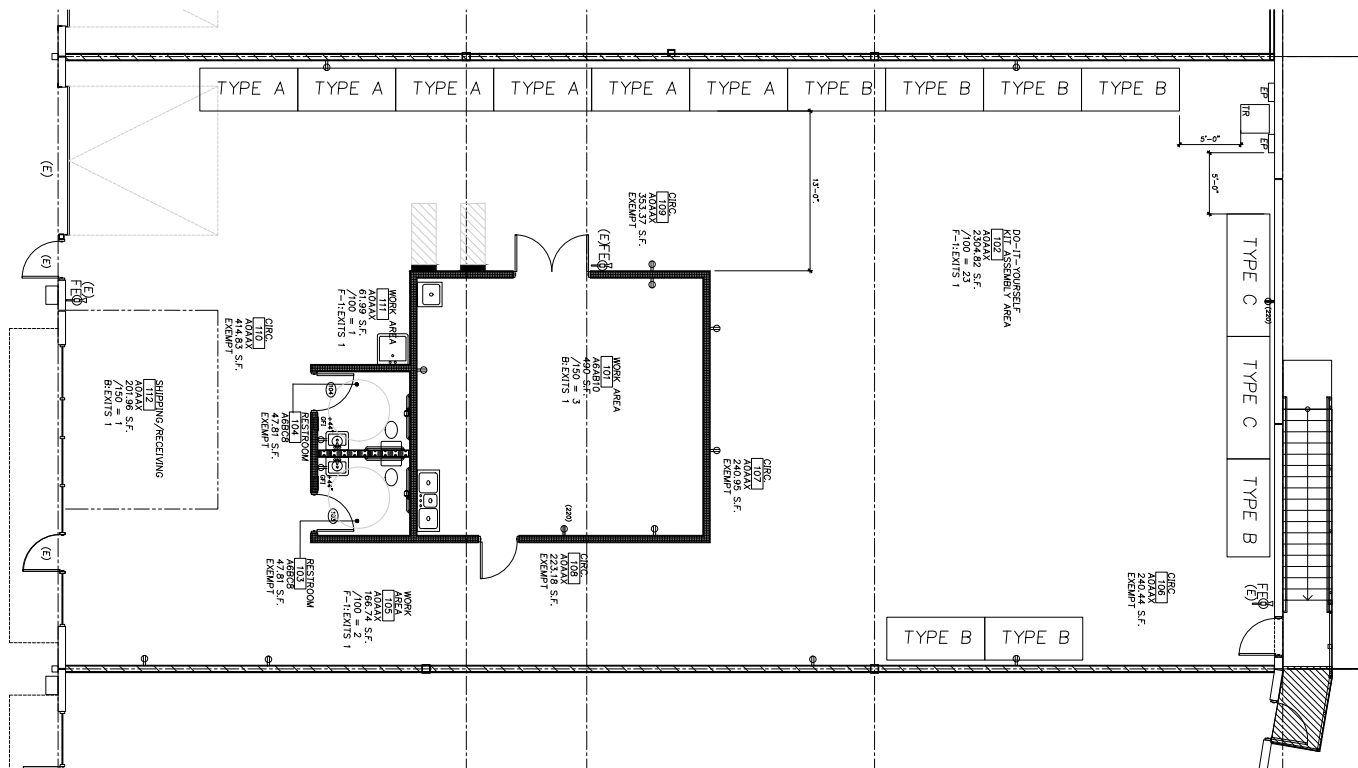
KIDDER.COM

This information supplied herein is from sources we deem reliable. It is provided without any representation, warranty, or guarantee, expressed or implied as to its accuracy. Prospective Buyer or Tenant should conduct an independent investigation and verification of all matters deemed to be material, including, but not limited to, statements of income and expenses. Consult your attorney, accountant, or other professional advisor.

km Kidder Mathews

Columbia Industrial Park

Building 4



CHRIS DOWHANIUK
503.789.5308
chris.dowhaniuk@kidder.com



**Kidder
Mathews**