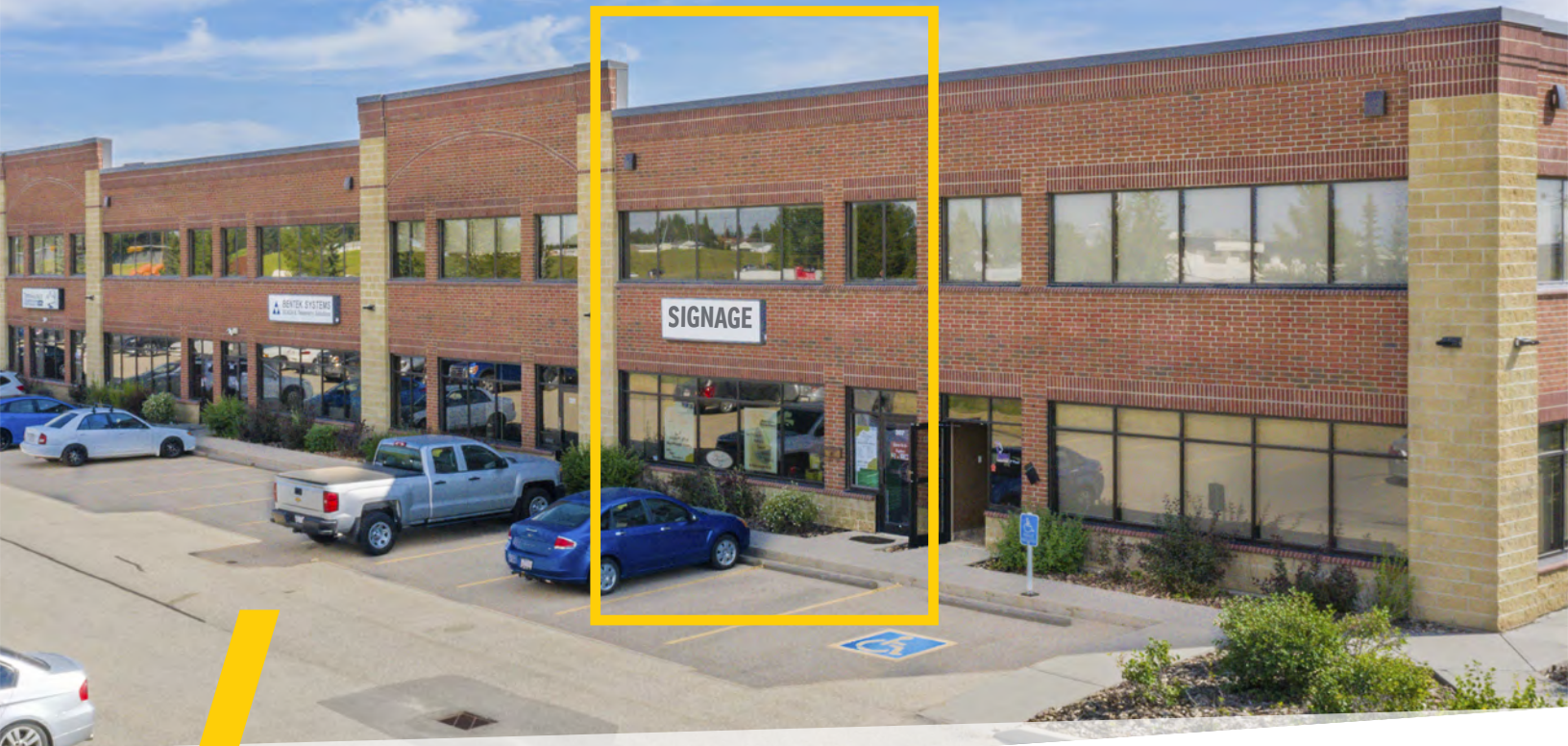


Excellent exposure on 36 St. SE Ample free parking

4,946 sf

Unit 307

C/S



## FLEX SPACE IN EASTFIELD INDUSTRIAL FOR SALE

Unit 307, 3750 46 Avenue SE  
Calgary



Office/  
Showroom



Warehouse



10'x12'  
drive-in



FOR MORE  
INFORMATION OR  
TO VIEW, PLEASE  
CONTACT:

**Ryan Boyne**, B. COMM, ASSOCIATE

c: 403-483-5599

d: 403-294-7173

rboyne@barclaystreet.com

**Murray Ion**, VICE PRESIDENT, PARTNER

c: 403-797-3103

d: 403-294-7179

mion@barclaystreet.com



LOCAL  
EXPERTISE  
MATTERS



## AREA DEMOGRAPHICS (2 km radius)

Population **17,618** Median Age **40.5**

Average Household Income **\$89,036**

### Current Consumption / Household

FOOD **\$12,051** HEALTH CARE **\$4,589**

RECREATION **\$3,496** PERSONAL CARE **\$1,518**

LIQUOR/TOBACCO **\$2,791** CLOTHING **\$2,637**

Daytime Employment **12,652** EMPLOYEES **964** BUSINESSES

Traffic Count **5,000** VEHICLES DAILY ON 36 STREET SE

Sources: Statistics Canada, City of Calgary, CoStar

## PROPERTY INFORMATION

ADDRESS: 3750 46 Avenue SE, Calgary

SUBDIVISION: Eastfield

LEGAL DESCRIPTION: Plan 0711408; Unit 6

ZONING: I-B (Industrial Business)

YEAR OF CONSTRUCTION: 2007

### GROSS LEASABLE AREA:

UNIT 307

1,594 sq. ft. – main floor office/showroom

1,493 sq. ft. – 2nd floor office

1,459 sq. ft. – warehouse

400 sq. ft. – mezzanine

TOTAL: 4,946 sq. ft.

CEILING HEIGHT: ~22' (clear)

POWER: 225 A (TBV)

LOADING: 1 x 10' x 12' drive-in

PARKING: Ample scramble, free of charge

2025 PROPERTY TAXES: \$19,910

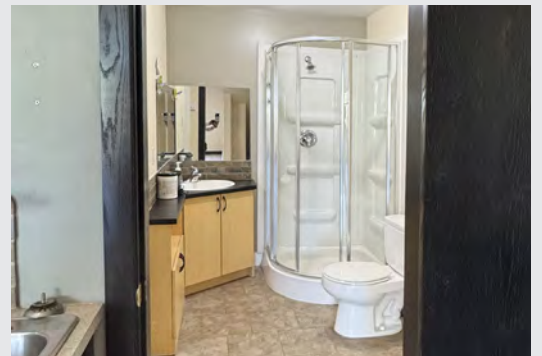
CONDO FEES: \$967.01/mo (\$11,604.12/yr)

PRICE: \$1,100,000



Floorplans are for reference only and to be verified. Subject to change.

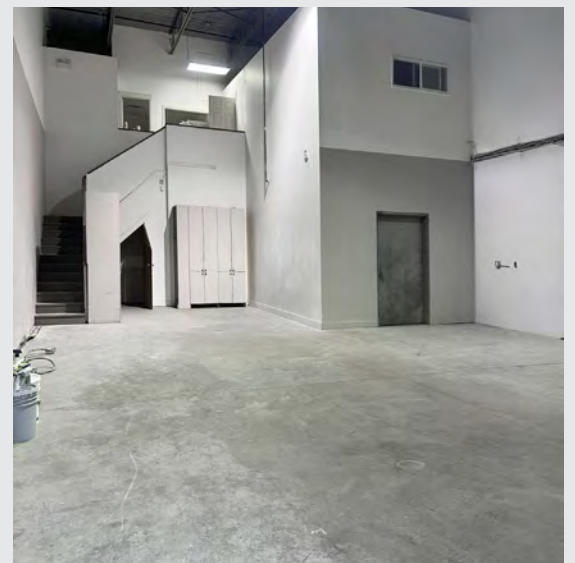
MAIN  
FLOOR  
OFFICE



2ND  
FLOOR  
OFFICE



WAREHOUSE  
AND  
MEZZANINE



The information contained herein has been gathered from sources deemed reliable, but is not warranted as such and does not form any part of any future contract. This offering may be altered or withdrawn at any time without notice.

Copyright © 2026 Barclay Street Real Estate Ltd. All rights reserved.



LOCAL EXPERTISE MATTERS