

FOR LEASE
INDUSTRIAL OFFICE

4421 W. Harry | Wichita, Kansas



Lease Rate: \$3,000.00/Mo., IG

Available Space:

Main Building: 4,198 SF (Excludes basement)

Zoning: Limited Industrial

Parking:

21+ spaces

Year Built:

1959

Ceiling Height:

Main Bldg.: 10'

Highlights:

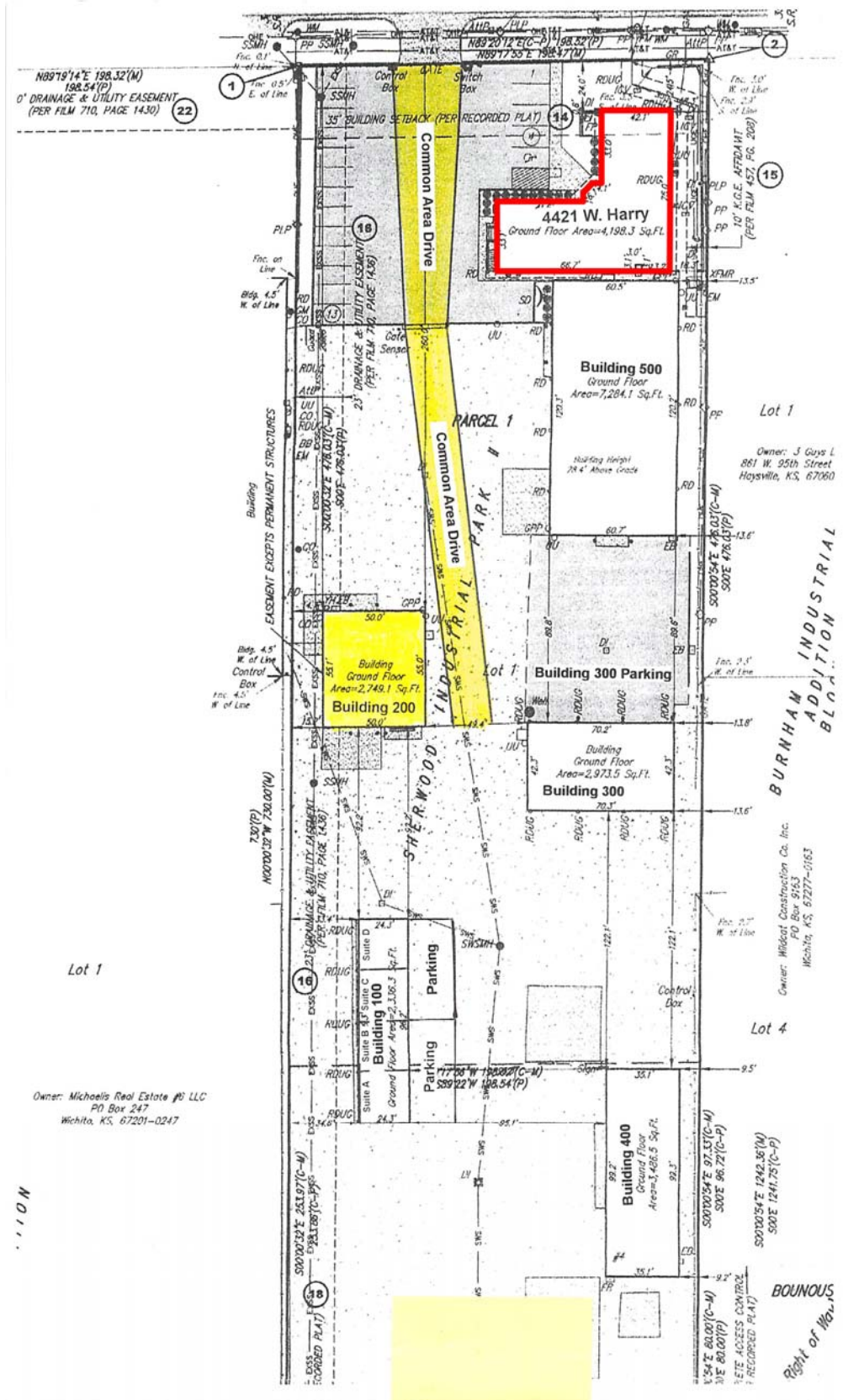
- Office space available for lease near Harry and West Street.
- Modern industrial office building with basement and break room.
- Office has HVAC throughout.

For Information, Please Contact:

Bradley Tidemann, SIOR
Direct: 316-292-3947
btidemann@weigand.com

Grant Tidemann, SIOR
Direct: 316-292-3908
tidemann@weigand.com

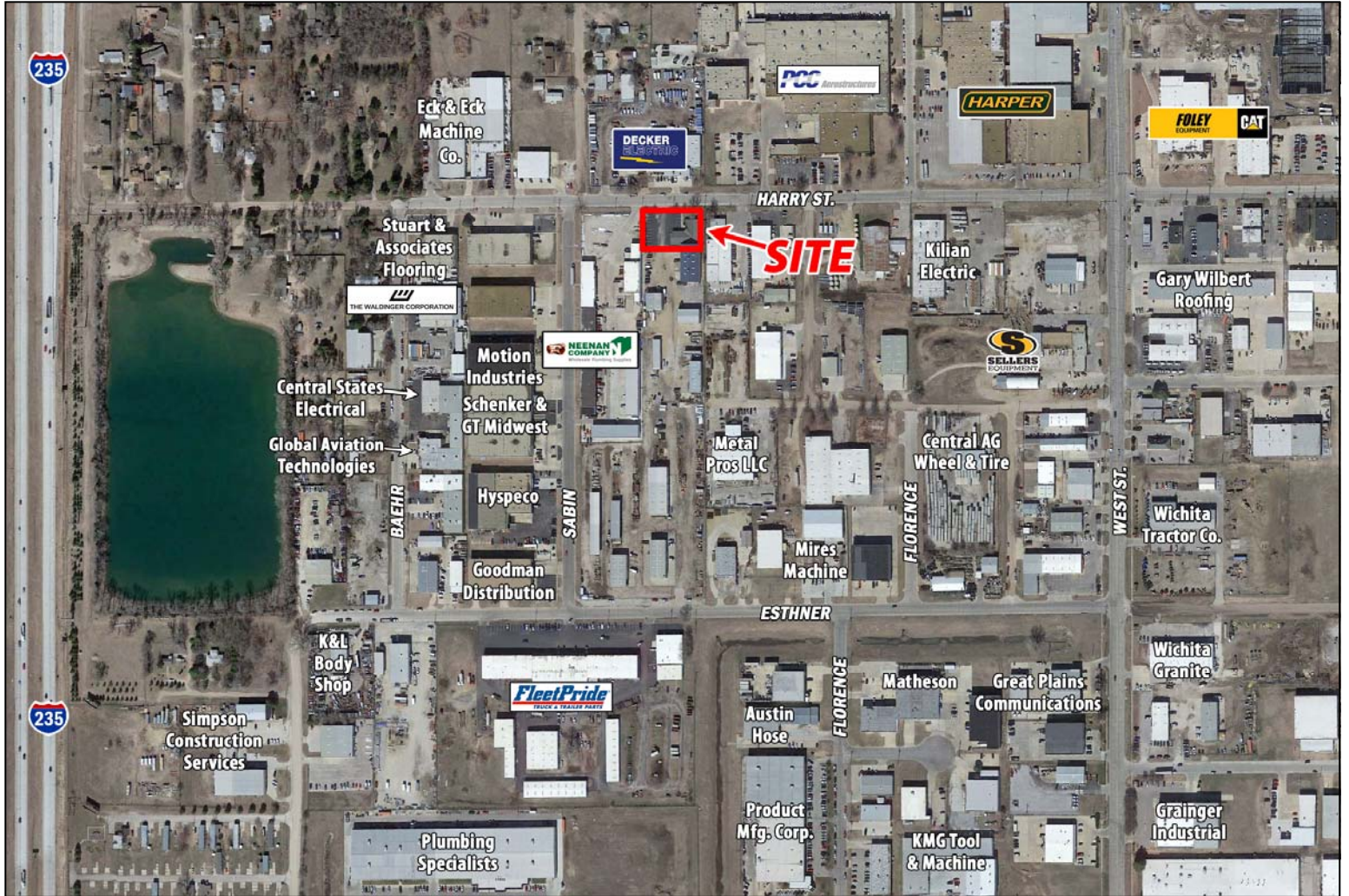




All information furnished regarding property for sales, rent, exchange or financing is from sources deemed reliable but no guarantee is made or responsibility assumed as to its accuracy or completeness and you are advised to make your own analysis and verification. Broker hereby notifies prospective buyer/lessee that (a) Broker will be acting as an agent of seller/lessor with the duty to represent seller/lessor's interest; (b) Broker will not be the agent of buyer/lessee; and (c) Information given to Broker will be disclosed to seller/lessor.

AERIAL VIEW

FOR LEASE
INDUSTRIAL OFFICE
4421 W. Harry | Wichita, Kansas



All information furnished regarding property for sales, rent, exchange or financing is from sources deemed reliable but no guarantee is made or responsibility assumed as to its accuracy or completeness and you are advised to make your own analysis and verification. Broker hereby notifies prospective buyer/lessee that (a) Broker will be acting as an agent of seller/lessor with the duty to represent seller/lessor's interest; (b) Broker will not be the agent of buyer/lessee; and (c) Information given to Broker will be disclosed to seller/lessor.