

AVAILABLE FOR SUBLEASE

# 2801 ALFT LANE SUITE 200

ELGIN, IL



# 2801 ALFT LANE SUITE 200



## SITE AERIAL



## PROPERTY FEATURES

**Total Building Size: 308,455 SF**

**Available Size: 64,624 SF**

**Office Size: 2,540 SF**

**Sublease Through: August 31, 2026**

**Occupancy: Available immediately**

**Loading: 11 exterior docks with levelers**

**Clear Height: 32'**

**Power: 400 Amps @ 480 volts**

**Sprinkler: ESFR**

**Parking: 60**

**Asking Lease Rate: \$9.00 Gross**

**Use:**

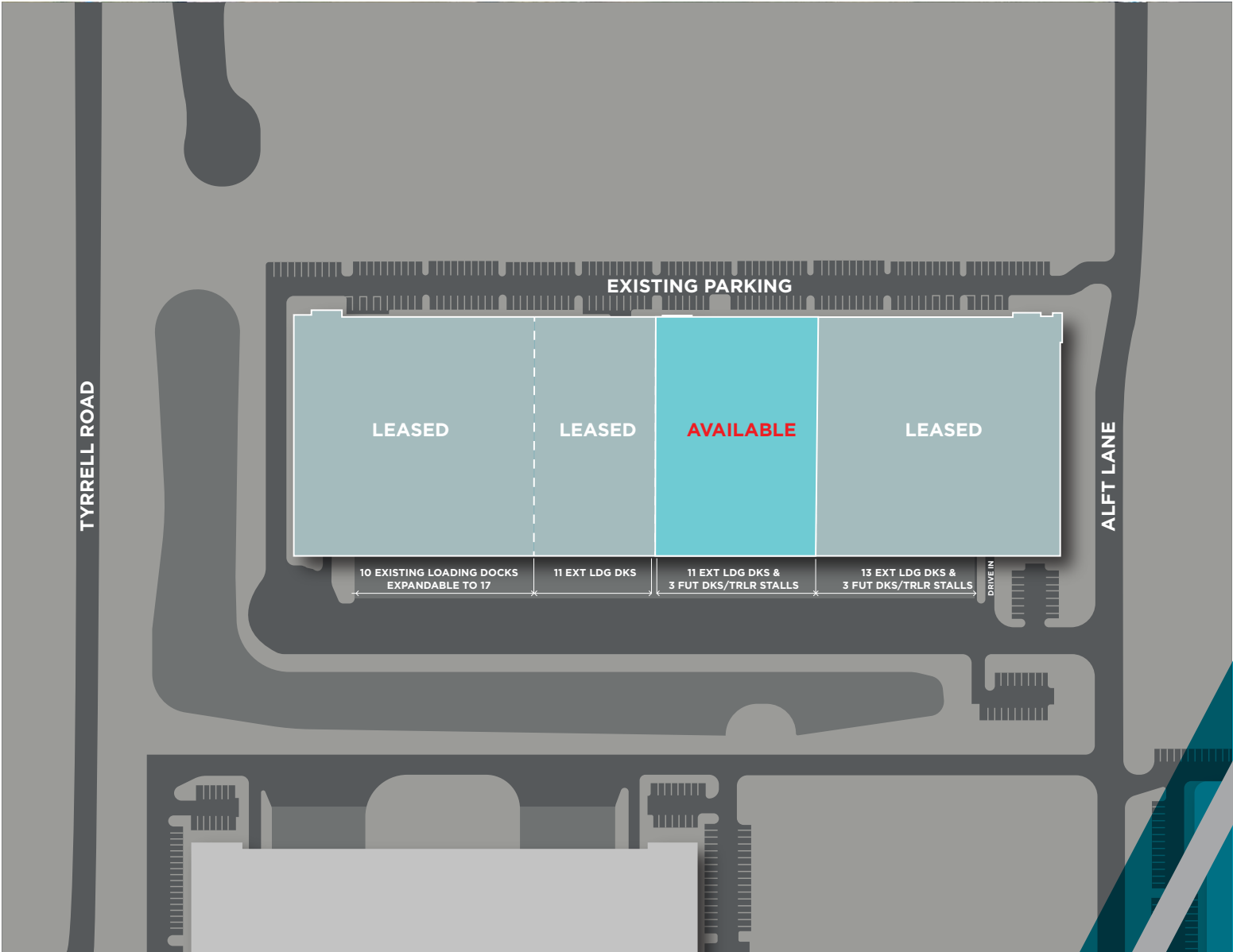
**Ideal for short term  
distribution**

# 2801 ALFT LANE

## SUITE 200



### SITE PLAN

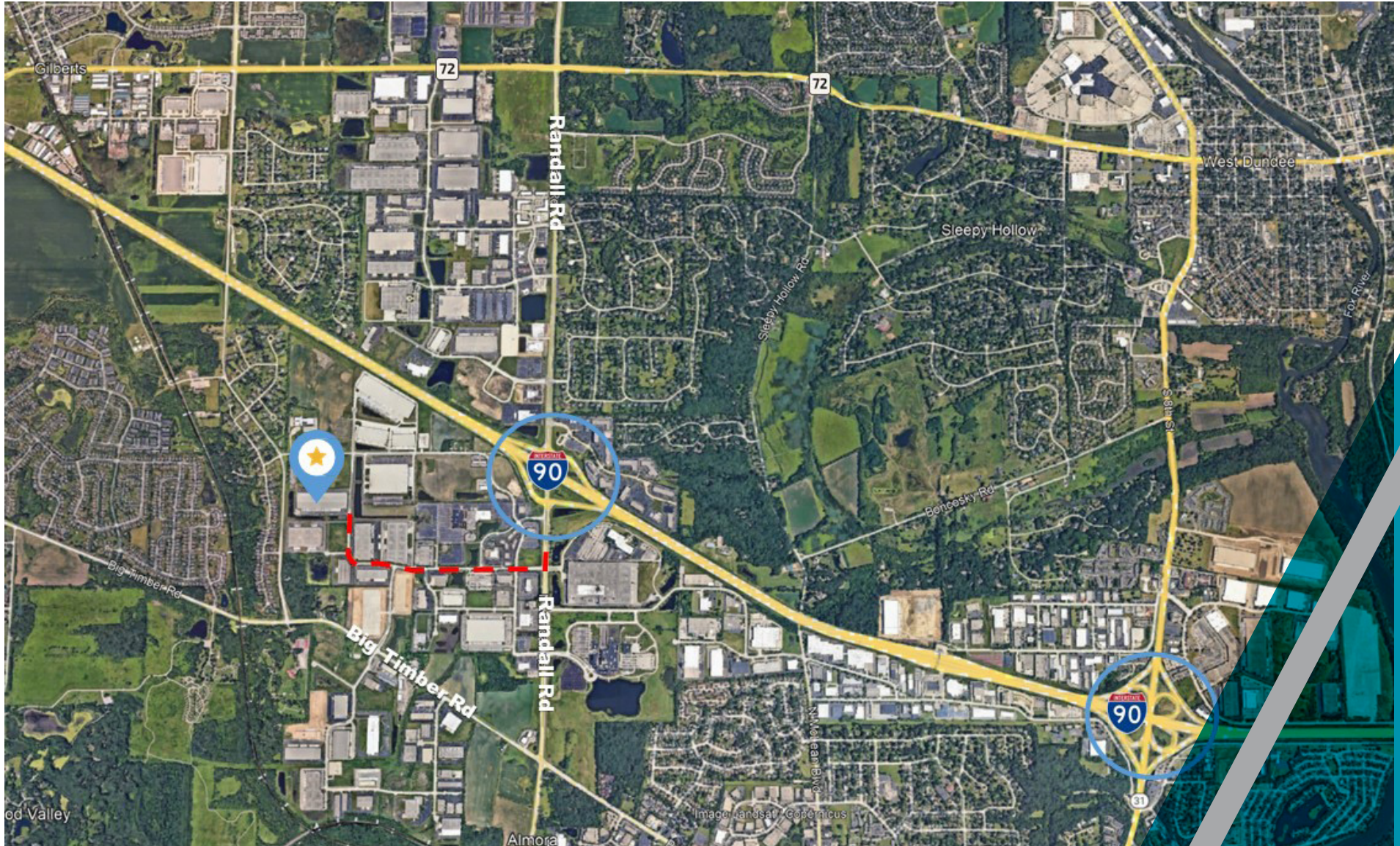




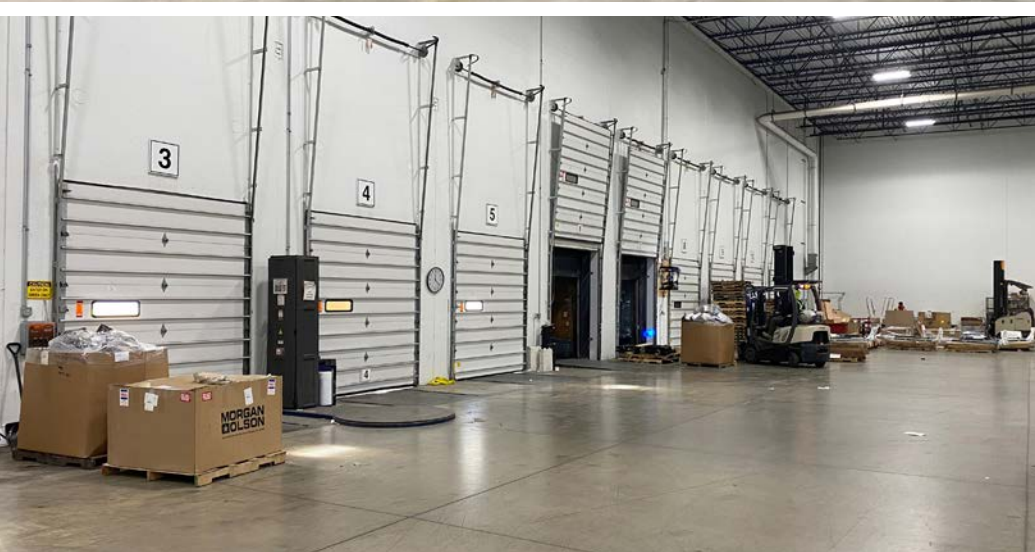
# 2801 ALFT LANE SUITE 200



## LOCATION AERIAL







**For more information, please contact:**

**Jeff Matella**  
Director  
+1 847 720 1349  
[jeff.matella@cushwake.com](mailto:jeff.matella@cushwake.com)

**Michael Labek**  
Senior Associate  
+1 312 470 2309  
[michael.labek@cushwake.com](mailto:michael.labek@cushwake.com)

**9500 W Bryan Mawr Avenue  
Suite 600  
Rosemont, IL 60018  
[cushmanwakefield.com](http://cushmanwakefield.com)**

©2025 Cushman & Wakefield. All rights reserved. The information contained in this communication is strictly confidential. This information has been obtained from sources believed to be reliable but has not been verified. NO WARRANTY OR REPRESENTATION, EXPRESS OR IMPLIED, IS MADE AS TO THE CONDITION OF THE PROPERTY (OR PROPERTIES) REFERENCED HEREIN OR AS TO THE ACCURACY OR COMPLETENESS OF THE INFORMATION CONTAINED HEREIN, AND SAME IS SUBMITTED SUBJECT TO ERRORS, OMISSIONS, CHANGE OF PRICE, RENTAL OR OTHER CONDITIONS, WITHDRAWAL WITHOUT NOTICE, AND TO ANY SPECIAL LISTING CONDITIONS IMPOSED BY THE PROPERTY OWNER(S). ANY PROJECTIONS, OPINIONS OR ESTIMATES ARE SUBJECT TO UNCERTAINTY AND DO NOT SIGNIFY CURRENT OR FUTURE PROPERTY PERFORMANCE.

