

10867 W. JEFFERSON AVE
RIVER ROUGE, MICHIGAN

RETAIL FOR SALE OR LEASE
7,261 Square Feet Available



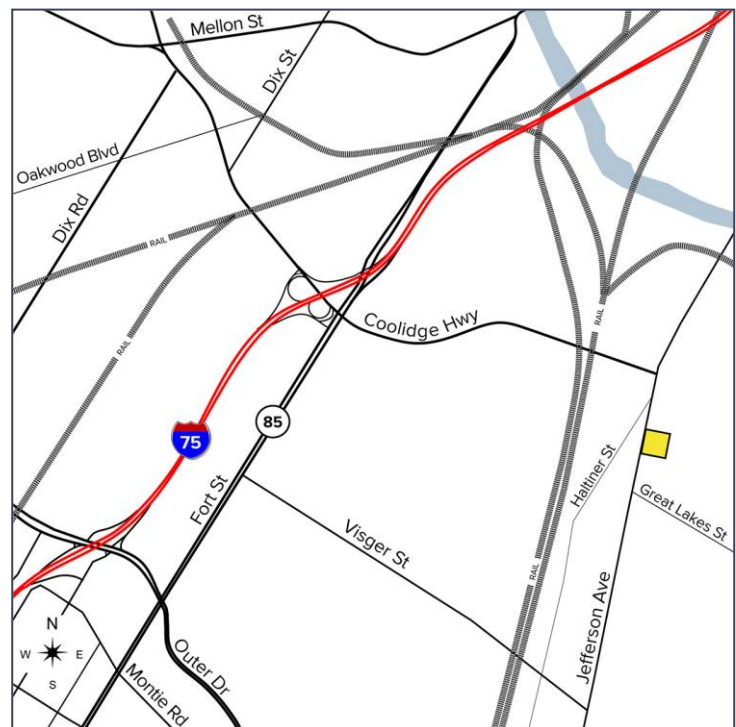
**SIGNATURE
ASSOCIATES**
KNOW SIGNATURE | KNOW RESULTS

HIGHLY VISIBLE CORNER LOCATION



PROPERTY FEATURES

- 7,261 square feet available
- Ideal for many retail uses
- New 7.5-ton HVAC unit
- 3-year rubber coating recently applied to roof
- Kitchen area has hood system and 3-compartment sink, two full walls of coolers in the retail area and a walk-in-cooler/freezer
- Second level storage/office adds 1,800 square feet to the usable space
- City is pro-business so they are open to many users
- New bridge opening has the potential to bring a lot of new traffic
- City is working on new housing developments
- Lease Rate: \$8.00/sq. ft. NNN
- Sale Price: \$295,000 (\$40.63/sq. ft.)



For more information, please contact:

JUSTIN GAFFREY
(248) 799 3143

jgaffrey@signatureassociates.com

MARVIN PETROUS
(248) 359 0647

mpetrous@signatureassociates.com

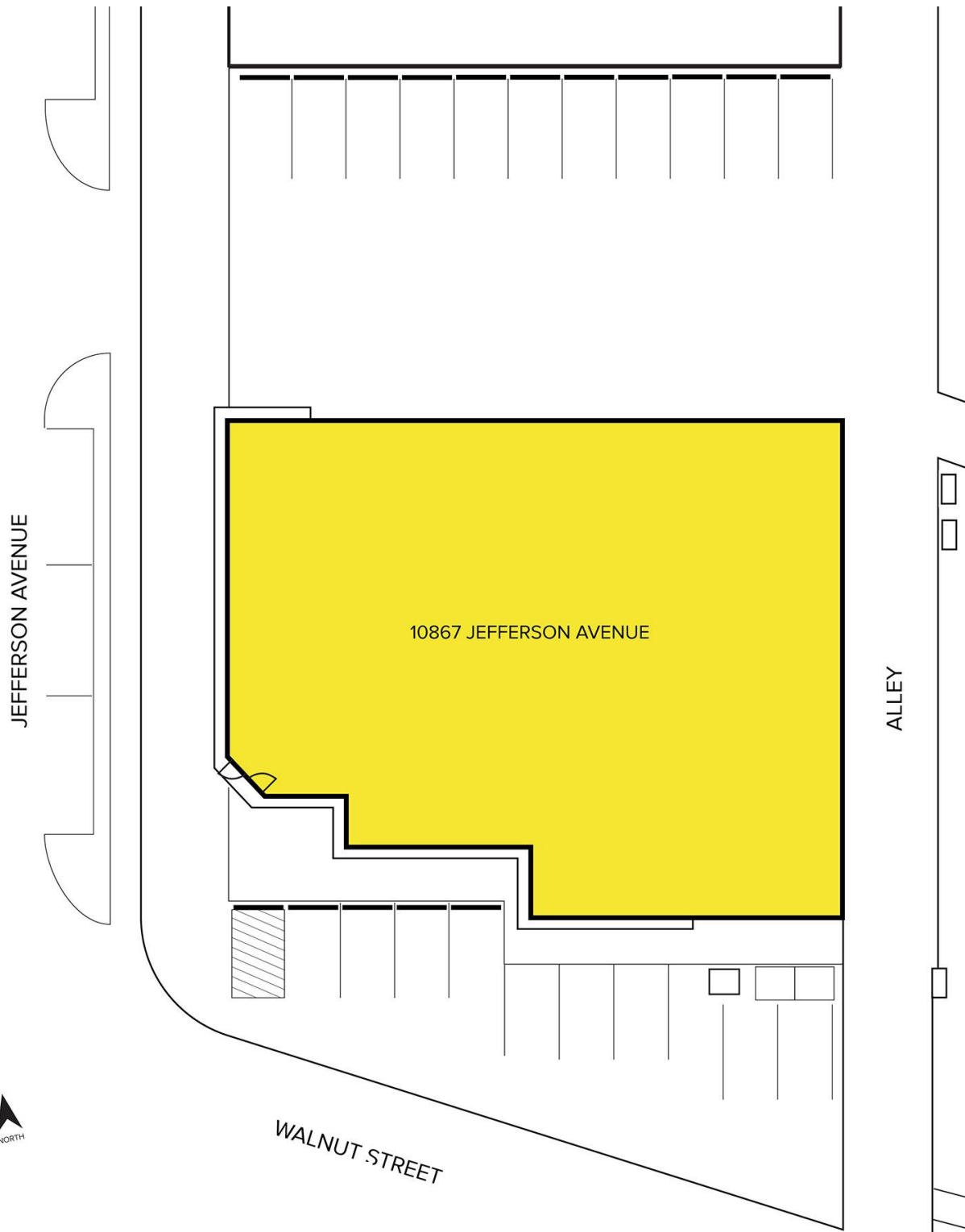
SIGNATURE ASSOCIATES
One Towne Square, Suite 1200
Southfield, MI 48076
www.signatureassociates.com

10867 W. Jefferson Avenue – River Rouge, Michigan

Retail For Sale or Lease

7,261
Square Feet
AVAILABLE

Site Plan



For more information, please contact:

JUSTIN GAFFREY
(248) 799 3143
jgaffrey@signatureassociates.com

MARVIN PETROUS
(248) 359 0647
mpetrous@signatureassociates.com

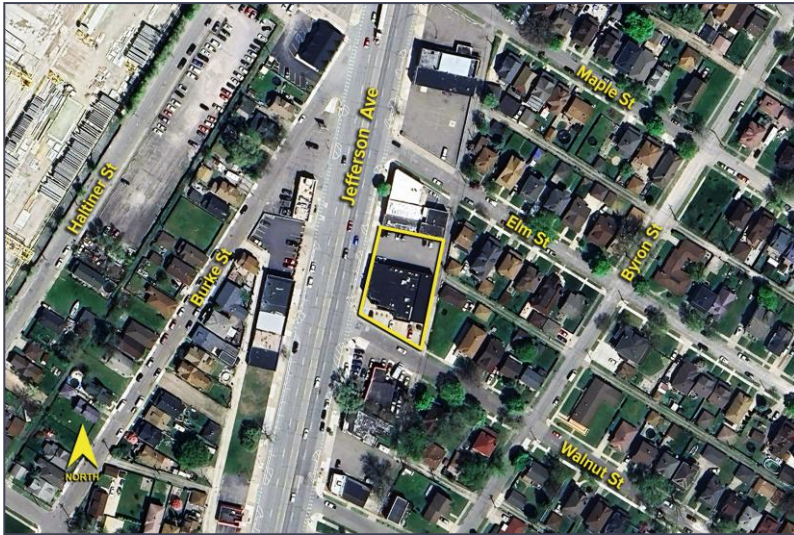
SIGNATURE ASSOCIATES
One Towne Square, Suite 1200
Southfield, MI 48076
www.signatureassociates.com

Information is subject to verification and no liability for errors or omissions is assumed. Price is subject to change and listing withdrawal.

10867 W. Jefferson Avenue – River Rouge, Michigan

Retail For Sale or Lease

7,261
Square Feet
AVAILABLE



DEMOGRAPHICS

	POPULATION	MED. HH INCOME
1 MILE	11,363	\$43,601
3 MILE	72,086	\$52,908
5 MILE	215,142	\$60,168

TRAFFIC COUNTS (TWO-WAY)

5,791	Jefferson Ave. N of Coolidge Hwy.
7,489	Jefferson Ave. S of Coolidge Hwy
8,237	Coolidge Hwy. W. of Jefferson Ave.



For more information, please contact:

JUSTIN GAFFREY

(248) 799 3143

jgaffrey@signatureassociates.com

MARVIN PETROUS

(248) 359 0647

mpetrous@signatureassociates.com

SIGNATURE ASSOCIATES

One Towne Square, Suite 1200

Southfield, MI 48076

www.signatureassociates.com