

FOR LEASE ±54,805 SF

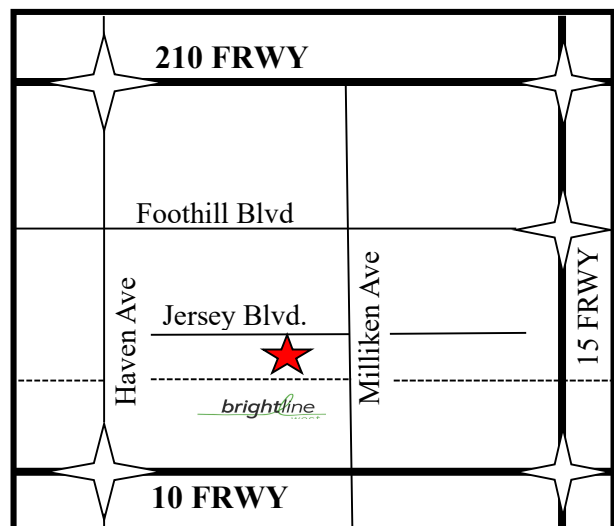


11251 JERSEY BLVD., RANCHO CUCAMONGA, CA

features:

- ±4.57 Fully Fenced/Paved Site
- **Main Building:** ±42,500 Sq. Ft.
With 2-10 Ton Cranes (30' Underhook)
- ±3,055 Sq. Ft. Office Building
- ± 6,750 Sq. Ft. Maintenance Building
- ± 2,500 Sq. Ft. Storage Building
- Fire Sprinklered
- 9 Ground Level Doors/Openings
- 3,000 Amp Panel, 277/480 Volt Power
- 1 – Exterior Truckwell
- Rail Possible

Brightline West Station Coming Soon



Map Not To Scale

For More Information, Contact:

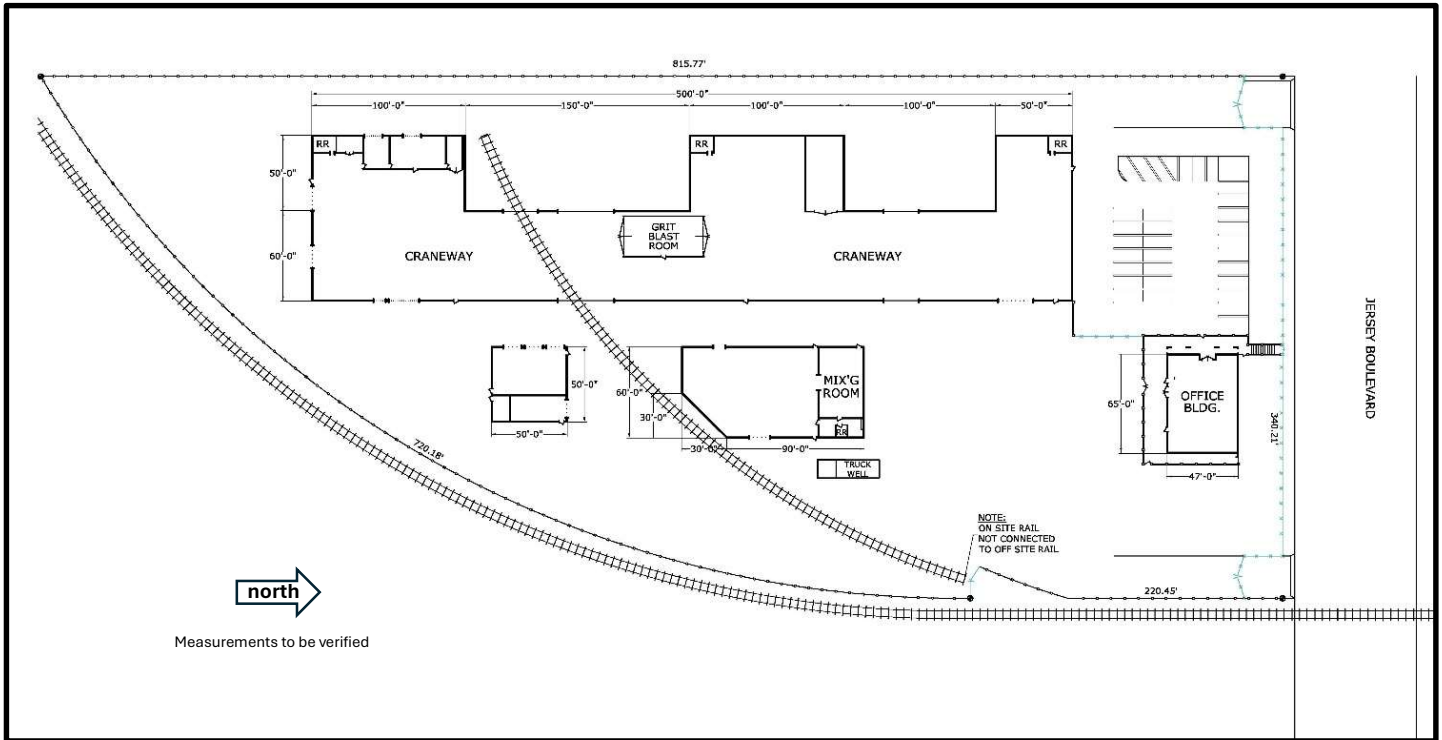
Robert Jimenez
909.238.9874
BRE #00932890



9620 CENTER AVENUE, SUITE 130 RANCHO CUCAMONGA, CALIFORNIA 91730

The information contained herein was obtained from third parties, and has not been independently verified by the real estate brokers. Buyers/tenants should have the experts of their choice inspect the property and verify all information. Real Estate brokers are not qualified to act as or select experts with respect to legal, tax, environmental, building construction, soils-drainage or other such matters.

11251 JERSEY BLVD., RANCHO CUCAMONGA, CA



For More Information, Contact:

Robert Jimenez

909.238.9874

BRE #00932890

