

FOR SALE or LEASE

9,000 SF ■ .72 AC



900 W. College Ave. Appleton, WI 54914

Office - Outagamie County Submarket

*Parcel #: 315121200

Property Owner: John May

****Real Estate Summary: Premium Office Space in Downtown Appleton****

Discover a quality professional office space strategically located near downtown Appleton on the bustling College Ave. This versatile building spans 9,000 sq. ft. and features 14 private offices, two well-equipped conference rooms, two welcoming reception areas, and two break rooms, along with a multipurpose area to accommodate various business needs.

Included with the sale is office furniture, providing a seamless transition for any new occupants. Ample parking is available, with 42 designated spaces, including 14 conveniently located across the street. This prime location and comprehensive amenities make it an ideal choice for businesses looking to enhance their presence in a high-traffic area. Existing Tenant is Schmitt Title.

MIKE MAEDKE
COMMERCIAL BROKER
920.360.7100
mmaedke@commercialhorizons.com

APPLETON OFFICE
229 E. Washington Street
Appleton, WI 54911

GREEN BAY OFFICE
1175 Lombardi Avenue
Green Bay, WI 54304

commercialhorizons.com

Commercial Horizons, Inc. No warranty or representation, express or implied, is made to the accuracy or completeness of the information contained herein, and same is submitted subject to errors, omissions, change of price, rental or other conditions, withdrawal without notice, and to any special listing conditions imposed by the property owner(s). As applicable, we make no representation as to the condition of the property (or properties) in question.

PROPERTY

Purchase Price:
\$2,945,000



Development & Brokerage

BUILDING DETAILS

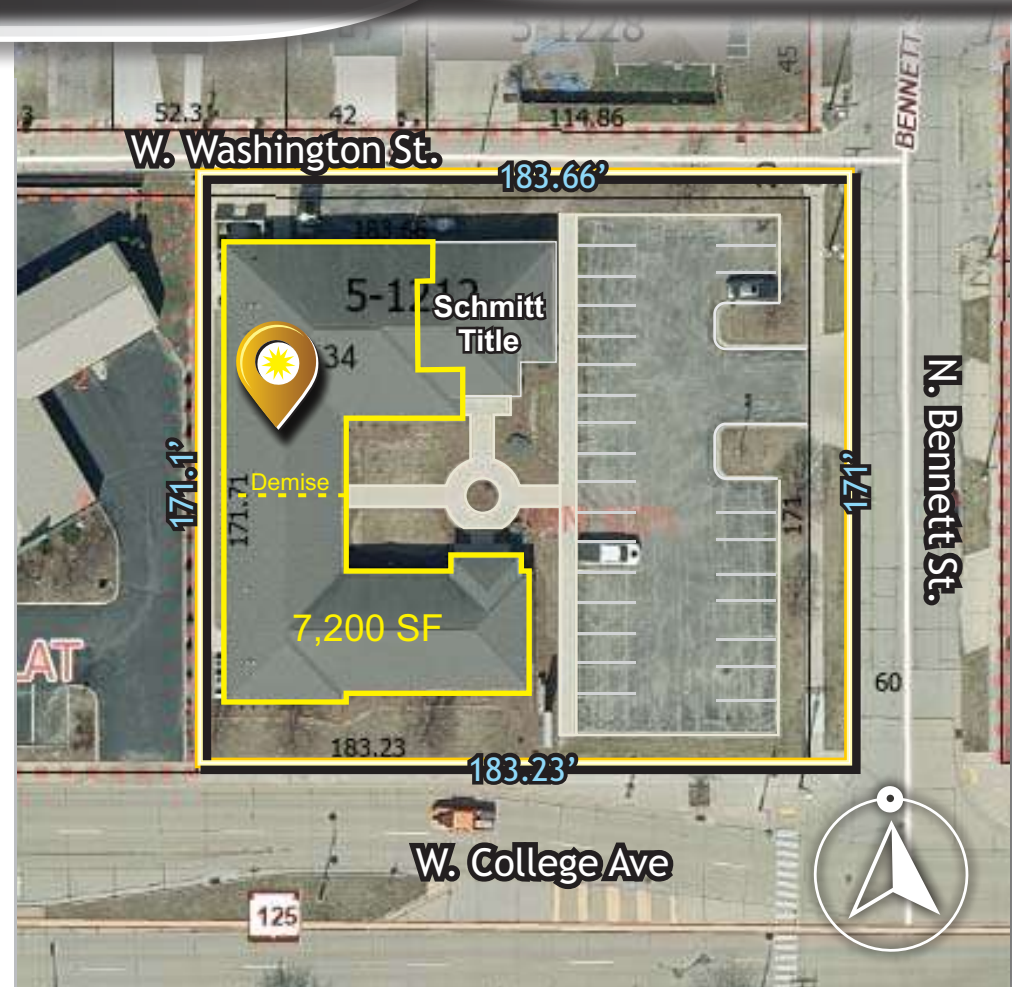
- Building Size: 9,000 SF
- **AVAILABLE: 7,200 SF (Divisible)**
- Tenant: Schmitt Title, LLC 1,800 SF
- **Lease Rate: \$15.00/SF**
- Lease Type: NNN est. \$5.74/SF

PROPERTY SNAPSHOT

- Location: 900 W. College Ave. Appleton, WI
- Built: 2005
- Lot Size: .72 acres / 31,363 SF
- Construction: Masonry
- Zoned: Commercial (Central Business District)
- Parcel No. 315121200
- Parking: 42 surface parks
- Park Ratio: 4.73 /1,000 sf
 - (Note: 14 parking spots across the street at 820 W College Ave.)
- Property Taxes 2023: \$21,516.87



MIKE MAEDKE
COMMERCIAL BROKER
920.360.7100
mmaedke@commercialhorizons.com



Demographics

	1 Mile	3 Mile
■ Population	15,763	97,141
■ Households	6,534	40,761
■ Median HH Income	\$53,684	\$65,174

Traffic Counts

■ W. College Ave.....	20,339 vpd
■ N. Badger Ave.....	5,584 vpd
■ S. Memorial Dr.....	13,169 vpd

APPLETON OFFICE
229 E. Washington Street
Appleton, WI 54911

GREEN BAY OFFICE
1175 Lombardi Avenue
Green Bay, WI 54304

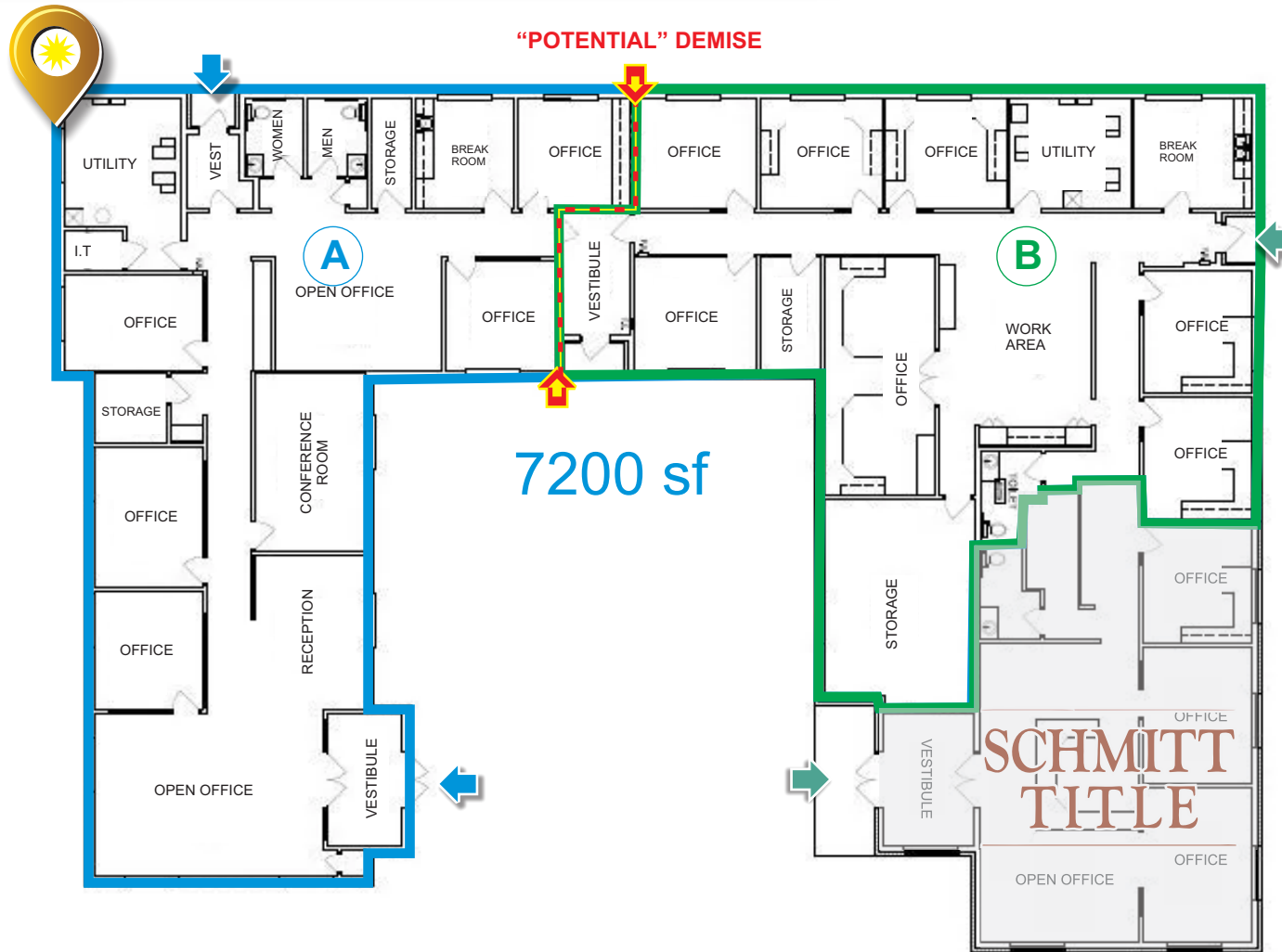
commercialhorizons.com

FLOORPLAN

Available: 7,200 SF



Development & Brokerage



MIKE MAEDKE
COMMERCIAL BROKER
920.360.7100
mmaedke@commercialhorizons.com

APPLETON OFFICE
229 E. Washington Street
Appleton, WI 54911

GREEN BAY OFFICE
1175 Lombardi Avenue
Green Bay, WI 54304

commercialhorizons.com

Commercial Horizons, Inc. No warranty or representation, express or implied, is made to the accuracy or completeness of the information contained herein, and same is submitted subject to errors, omissions, change of price, rental or other conditions, withdrawal without notice, and to any special listing conditions imposed by the property owner(s). As applicable, we make no representation as to the condition of the property (or properties) in question.

INTERIOR #A

PHOTOS



Development & Brokerage



**All furniture and fixtures can stay within the suite as part of the lease for Tenant's use.*

MIKE MAEDKE
COMMERCIAL BROKER
920.360.7100
mmaedke@commercialhorizons.com



APPLETON OFFICE
229 E. Washington Street
Appleton, WI 54911

GREEN BAY OFFICE
1175 Lombardi Avenue
Green Bay, WI 54304

commercialhorizons.com

Commercial Horizons, Inc. No warranty or representation, express or implied, is made to the accuracy or completeness of the information contained herein, and same is submitted subject to errors, omissions, change of price, rental or other conditions, withdrawal without notice, and to any special listing conditions imposed by the property owner(s). As applicable, we make no representation as to the condition of the property (or properties) in question.

INTERIOR #A

PHOTOS



Development & Brokerage



**All furniture and fixtures can stay within the suite as part of the lease for Tenant's use.*

MIKE MAEDKE
COMMERCIAL BROKER
920.360.7100
mmaedke@commercialhorizons.com



APPLETON OFFICE
229 E. Washington Street
Appleton, WI 54911

GREEN BAY OFFICE
1175 Lombardi Avenue
Green Bay, WI 54304

commercialhorizons.com

Commercial Horizons, Inc. No warranty or representation, express or implied, is made to the accuracy or completeness of the information contained herein, and same is submitted subject to errors, omissions, change of price, rental or other conditions, withdrawal without notice, and to any special listing conditions imposed by the property owner(s). As applicable, we make no representation as to the condition of the property (or properties) in question.

INTERIOR #B

PHOTOS



Development & Brokerage



**All furniture and fixtures can stay within the suite as part of the lease for Tenant's use.*



MIKE MAEDKE
COMMERCIAL BROKER
920.360.7100
mmaedke@commercialhorizons.com



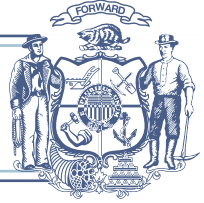
APPLETON OFFICE
229 E. Washington Street
Appleton, WI 54911

GREEN BAY OFFICE
1175 Lombardi Avenue
Green Bay, WI 54304

commercialhorizons.com

STATE OF WISCONSIN BROKER DISCLOSURE

To Non-Residential Customers



Wisconsin Law requires all real estate licensees to give the following information about brokerage services to prospective customer



Prior to negotiating on your behalf the Broker must provide you the following disclosure statement:

BROKER DISCLOSURE TO CUSTOMERS

You are the customer of the broker. The broker is either an agent of another party in the transaction or a subagent of another broker who is the agent of another party in the transaction. The broker, or a salesperson acting on the behalf of the broker, may provide brokerage services to you. Whenever the broker is providing brokerage services to you, the broker owes you, the customer, the following duties:

- The duty to provide brokerage services to you fairly and honestly.
- The duty to exercise reasonable skill and care in providing brokerage services to you.
- The duty to provide you with accurate information about market conditions within a reasonable time if you request it, unless disclosure of the information is prohibited by law.
- The duty to disclose to you in writing certain material adverse facts about a property, unless disclosure of the information is prohibited by law (see "Definition of Material Adverse Facts" below).
- The duty to protect your confidentiality. Unless the law requires it, the broker will not disclose your confidential information of other parties.
- The duty to safeguard trust funds and other property the broker holds.
- The duty, when negotiating, to present contract proposals in an objective and unbiased manner and disclose the advantages and disadvantages of the proposals.

Please review this information carefully. A broker or salesperson can answer your questions about brokerage services, but if you need legal advice, tax advice, or a professional home inspection, contact an attorney, tax advisor, or home inspector.

This disclosure is required by section 452.135 of the Wisconsin Statutes and is for information only. It is a plain language summary of a broker's duties to a customer under section 452.133 (1) of the Wisconsin Statutes.

CONFIDENTIALITY NOTICE TO CUSTOMERS

Broker will keep confidential any information given to broker in confidence, or any information obtained by broker that he or she knows a reasonable person would want to be kept confidential by law, or you authorize the broker to disclose particular information. A broker shall continue to keep the information confidential after broker is no longer providing brokerage services to you.

No representation is made as to the legal validity of any provision or the adequacy of any provision on any specific transaction.

The following information is required to be disclosed by law.

1. Material adverse facts, as defined in section 452.01 (5g) of the Wisconsin statutes (see "definition of material adverse facts" below).
2. Any facts known by the broker that contradict any information included in a written inspection report on the property or real estate that is the subject of the transaction. To ensure that the broker is aware of what specific information below. At a later time, you may also provide the broker with other information that you consider to be confidential.

CONFIDENTIAL INFORMATION:

NON-CONFIDENTIAL INFORMATION (The following information may be disclosed by Broker):

(INSERT INFORMATION YOU AUTHORIZE THE BROKER TO DISCLOSE SUCH AS FINANCIAL QUALIFICATION INFORMATION)

CONSENT TO TELEPHONE SOLICITATION

I/We agree that the Broker and any affiliated settlement service providers (for example, a mortgage company or title company) may call our/my home or cell phone numbers regarding issues, goods and services related to the real estate transaction until I/we withdraw this consent in writing. List Home/Cell Numbers:

SEX OFFENDER REGISTRY

Notice: You may obtain information about the sex offender registry and persons registered with the registry by contacting the Wisconsin Department of Corrections on the internet at [http:// offender.doc.state.wi.us/public/](http://offender.doc.state.wi.us/public/) or by phone at 608-240-5830.

DEFINITION OF MATERIAL ADVERSE FACTS

A "material adverse fact" is defined in Wis. Stat. 452.01 (5g) as an adverse fact that a party indicates is of such significance, or that is generally recognized by a competent licensee as being of such significance to a reasonable party that it affects or would affect the party's decision to enter into a contract or agreement concerning a transaction or affects or would affect the party's decision about the terms of such a contract or agreement. An "adverse fact" is defined in Wis. Stat. 452.01 (1e) as a condition or occurrence that a competent licensee generally recognizes will significantly adversely affect the value of the property, significantly reduce the structural integrity of improvements to real estate, or present a significant health risk to occupants of the property, or information that indicates that a party to a transaction is not able to or does not intend to meet his or her obligations under a contract or agreement made concerning the transaction.

