

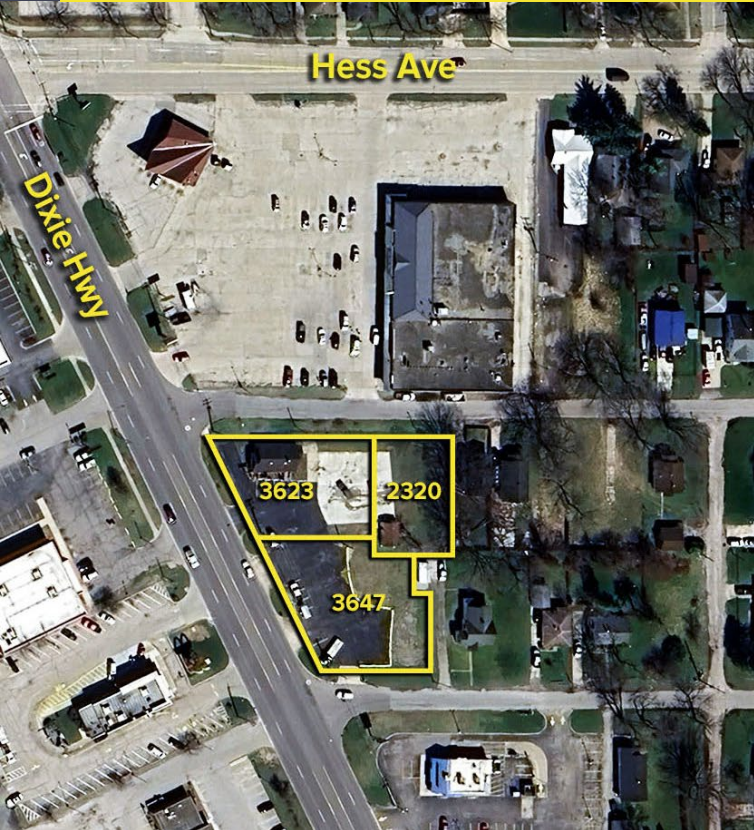
3623 DIXIE HIGHWAY
SAGINAW, MICHIGAN

LAND FOR SALE
0.70 Acres Available



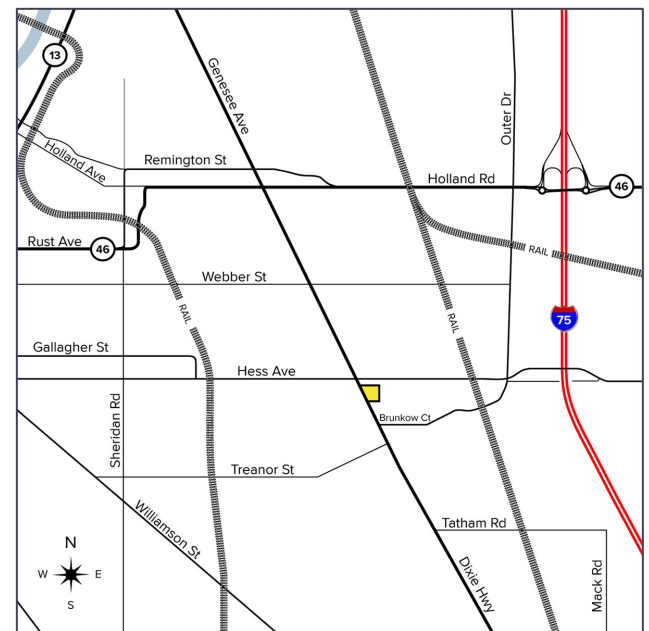
**SIGNATURE
ASSOCIATES**
KNOW SIGNATURE | KNOW RESULTS

DEVELOPMENT OPPORTUNITY



PROPERTY FEATURES

- 0.70 acres available
- Development opportunity for retailers, automotive, restaurants, financial institutions and more
- Three different parcels assembled together, 3623, 3647 Dixie Highway & 2320 Baldwin Street
- Includes 1,657 square foot building
- Surrounded by national and local retailers along Dixie Highway
- Must be sold together
- Sale price: \$130,000



For more information, please contact:

MARVIN PETROUS
(248) 359 0647
mpetrous@signatureassociates.com

SIGNATURE ASSOCIATES
One Towne Square, Suite 1200
Southfield, MI 48076
www.signatureassociates.com

3623 Dixie Highway – Saginaw, Michigan

Land For Sale

0.70
Acres
AVAILABLE

Site Plan



For more information, please contact:
MARVIN PETROUS
(248) 359 0647
mpetrous@signatureassociates.com

SIGNATURE ASSOCIATES
One Towne Square, Suite 1200
Southfield, MI 48076
www.signatureassociates.com

Information is subject to verification and no liability for errors or omissions is assumed. Price is subject to change and listing withdrawal.

3623 Dixie Highway – Saginaw, Michigan

Land For Sale

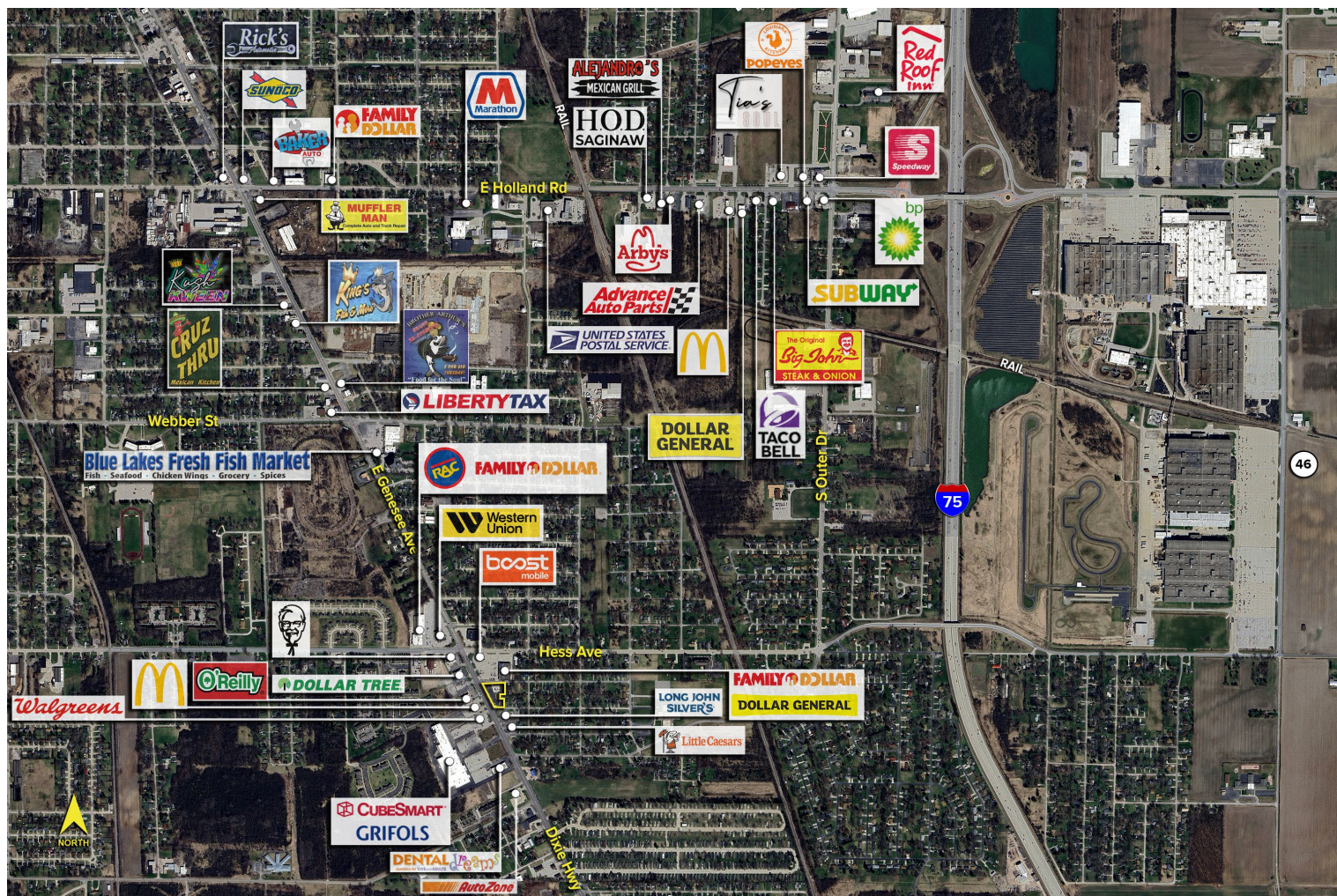
0.70
Acres
AVAILABLE

DEMOGRAPHICS

	POPULATION	MED. HH INCOME
1 MILE	6,654	\$32,593
3 MILE	29,770	\$38,929
5 MILE	71,566	\$47,899

TRAFFIC COUNTS (TWO-WAY)

8,969	Dixie Hwy. S of Hess Ave.
6,834	Dixie Hwy. N of Hess Ave.
6,236	Hess Ave. E of Dixie Hwy.
5,420	Hess Ave. W of Dixie Hwy.



For more information, please contact:

MARVIN PETROUS

(248) 359 0647

mpetrous@signatureassociates.com

SIGNATURE ASSOCIATES

One Towne Square, Suite 1200

Southfield, MI 48076

www.signatureassociates.com