



WESTGATE LAND | 43 ACRES± BUILD TO SUIT

W RENO AVE. & N SARA RD., OKLAHOMA CITY, OK

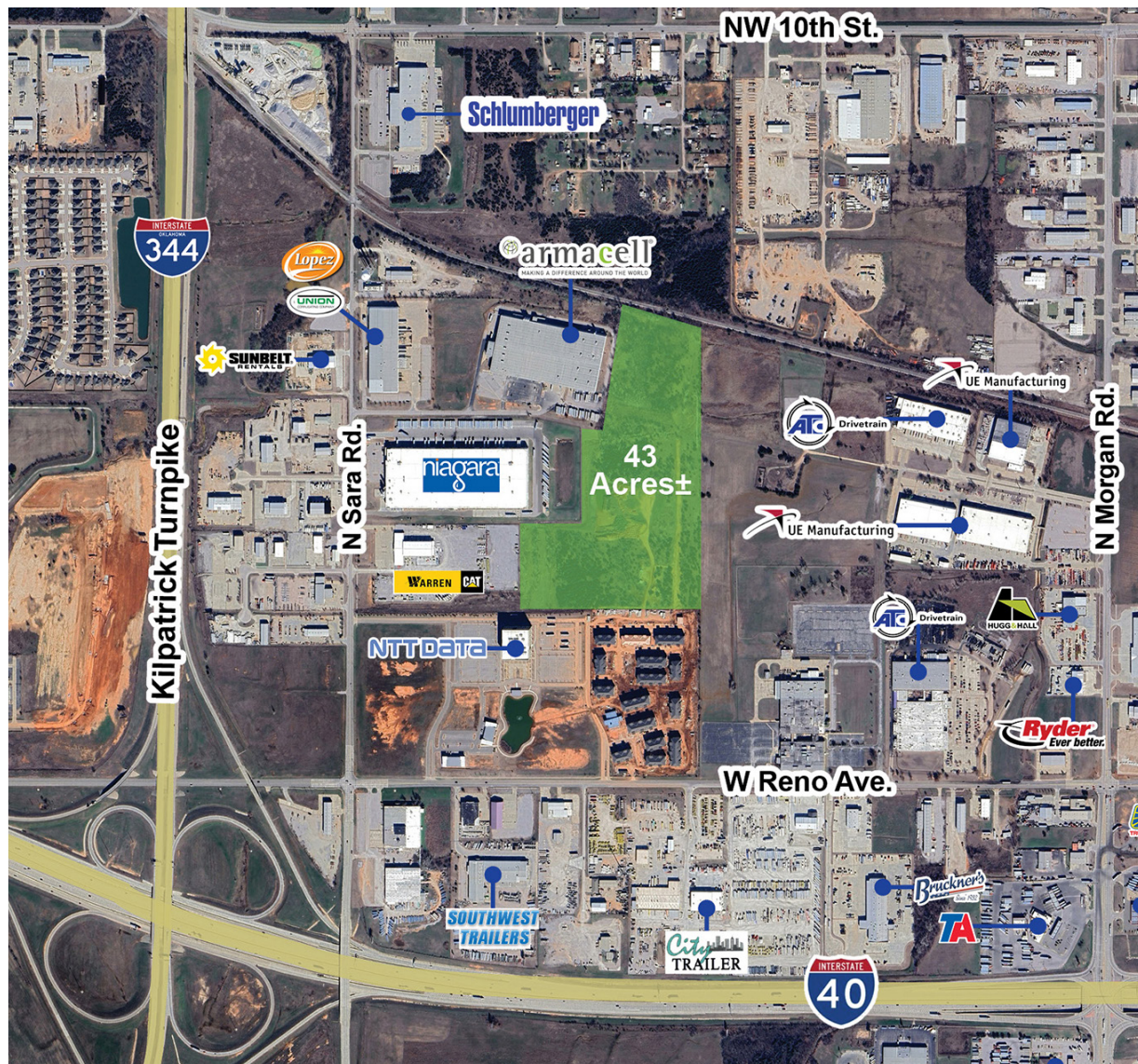
BRETT PRICE, CCIM, SIOR
 bprice@newmarkrp.com
 C: 405.613.8380

KRIS DAVIS, SIOR
 kgdavis@newmarkrp.com
 C: 405.202.9525

KARLEY HARPER, CCIM
 kharper@newmarkrp.com
 C: 405.371.3498

NEWMARK
 ROBINSON PARK

43 ACRES± / BUILD TO SUIT



PROPERTY OVERVIEW

The available land is located in Westgate Park, a mixed-use development featuring Class A industrial and office space. The property is located less than one mile from I-40 and Kilpatrick Turnpike, which has been extended to provide direct access to Will Rogers International Airport. Neighboring tenants include Armacell, Niagara, NTT Data, Lopez Foods, Warren Cat, and Schlumberger.

DETAILS

Land Size	43 Acres±
Price	Build to Suit
Zoning	I-2
Market	Oklahoma City
Cross Streets	W Reno & Sara Rd.

HIGHLIGHTS

Water and sewer to site

Located off the intersection of I-40 & Kilpatrick Turnpike

15 minutes± from Will Rogers International Airport

